

FOR SALE OR FOR LEASE

GOLFWAY CENTER

405 Golfway West Drive , St. Augustine, FL 32095



±19.60 ACRES AVAILABLE

EXCLUSIVE RETAIL LEASING

KATZ & ASSOCIATES

RETAIL REAL ESTATE ADVISORS

Nancy Sumner

VICE PRESIDENT

nancysummer@katzretail.com

(404) 561-9447

Katy Figg

VICE PRESIDENT

katyfigg@katzretail.com

(704) 298-9464

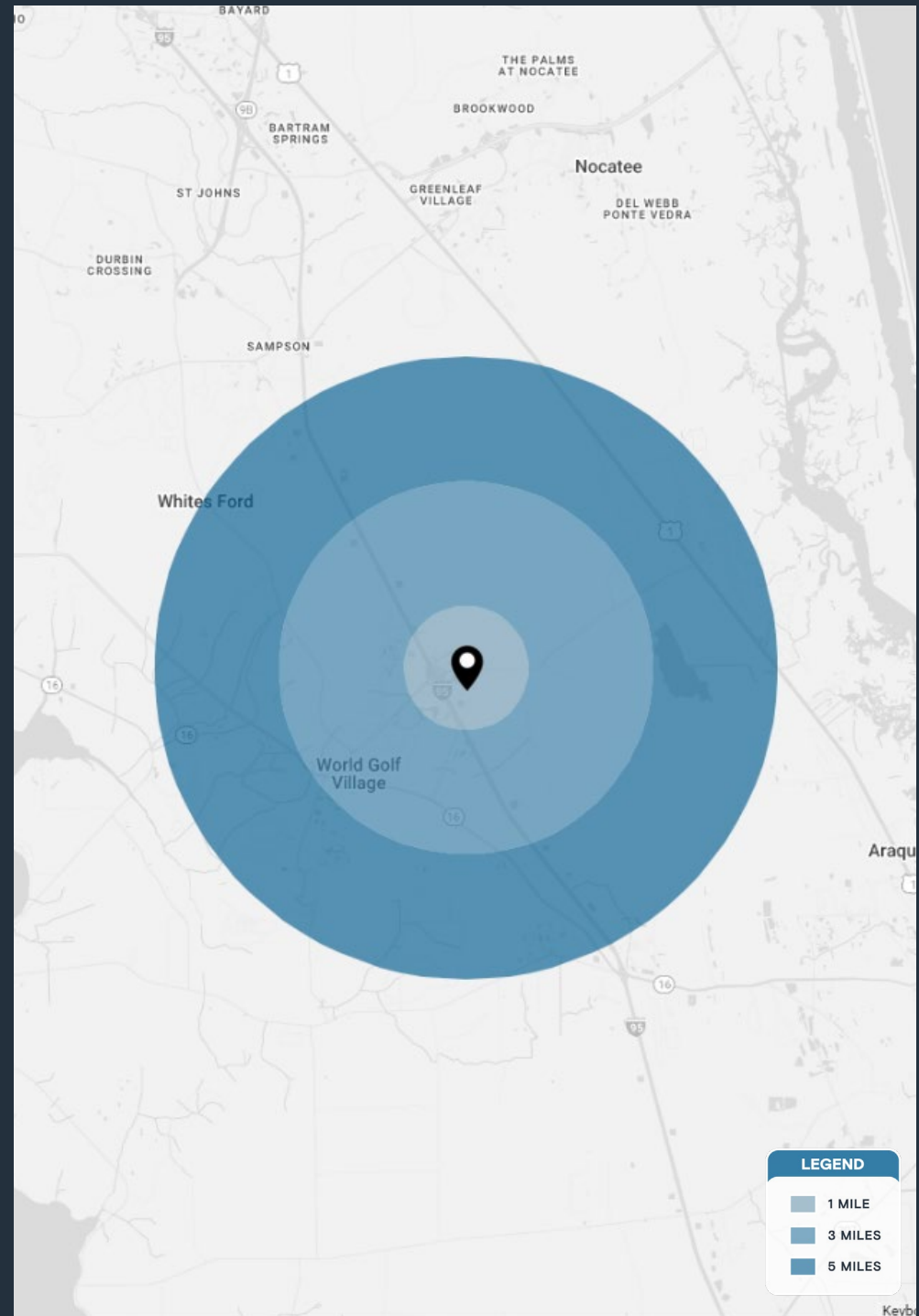
Property Overview

HIGHLIGHTS

- ±19.60 (±23.33 gross acres) useable acres available for sale or for lease.
- NE quadrant of International Golf Pkwy and 95
- Signalized intersection
- Prime signage opportunities
- 387 homes and 270 apartment units directly behind site
- Average HH income within a one mile radius is \$127,605

DEMOGRAPHICS	1 MILE	3 MILES	5 MILES
POPULATION	3,060	12,650	46,549
HOUSEHOLDS	1,183	5,167	16,441
EMPLOYEES	2,468	10,524	37,362
AVERAGE HH INCOME	\$127,605	\$124,492	\$140,235

	5 MINUTES	10 MINUTES	15 MINUTES
POPULATION	8,036	26,088	97,124
HOUSEHOLDS	3,277	9,331	71,490
EMPLOYEES	6,728	20,822	77,075
AVERAGE HH INCOME	\$125,340	\$133,583	\$136,579

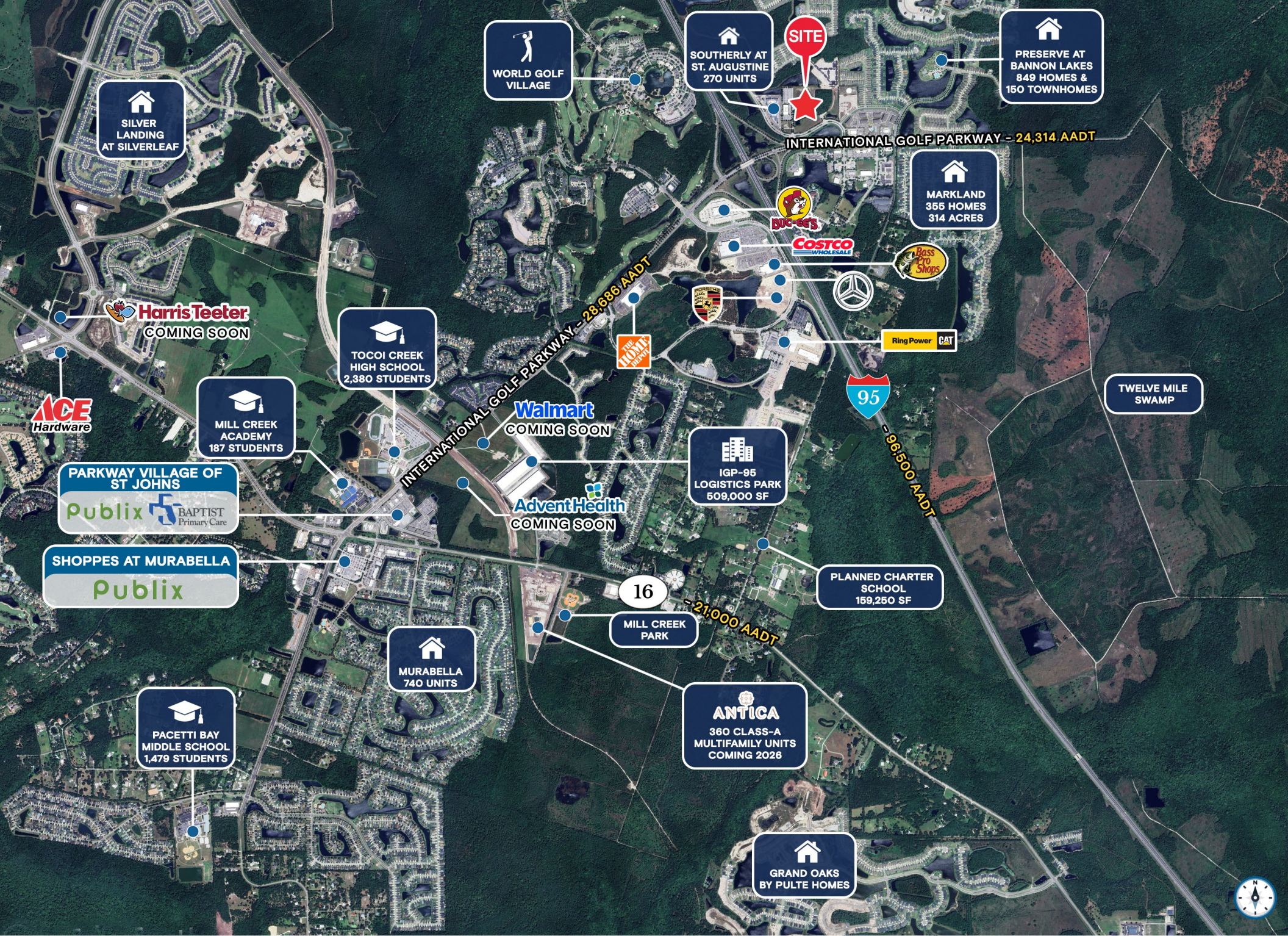




Tenant Roster

OP-1	Available	1.42 AC	OP-4	Available	0.37 AC	OP-7	Available	1.38 AC
OP-2	Available	0.24 AC	OP-5	Available	0.82 AC	OP-8	Available	8.39 AC
OP-3	Available	1.94 AC	OP-6	Available	2.53 AC			

Disclaimer: The Conceptual Site Plan is contingent upon final SJC and Governing Body Approvals



WORLD GOLF VILLAGE

SOUTHERLY AT ST. AUGUSTINE
270 UNITS

PRESERVE AT BANNON LAKES
849 HOMES & 150 TOWNHOMES

SILVER LANDING AT SILVERLEAF

MARKLAND
355 HOMES
314 ACRES

Harris Teeter
COMING SOON

TOCOI CREEK HIGH SCHOOL
2,380 STUDENTS

MILL CREEK ACADEMY
187 STUDENTS

Walmart
COMING SOON

IGP-95 LOGISTICS PARK
509,000 SF

PARKWAY VILLAGE OF ST JOHNS
Publix **BAPTIST Primary Care**

AdventHealth
COMING SOON

SHOPPES AT MURABELLA
Publix

PLANNED CHARTER SCHOOL
159,250 SF

MURABELLA
740 UNITS

MILL CREEK PARK

ANTICA
360 CLASS-A MULTIFAMILY UNITS
COMING 2026

PACETTI BAY MIDDLE SCHOOL
1,479 STUDENTS

GRAND OAKS BY PULTE HOMES

TWELVE MILE SWAMP



POPULATION & ECONOMIC GROWTH

- **Rapid Expansion:** The population grew by 26.4% (nearly 70,000 residents) between 2019 and 2024.
- **Future Projections:** Growth is expected to continue, with a projected 20.5% increase by 2029.
- **Job Market Leader:** Job growth in the county (23.7%) outpaced the national average (4.4%) by nearly 20% over the last five years.

AFFLUENT & HIGHLY EDUCATED COMMUNITY

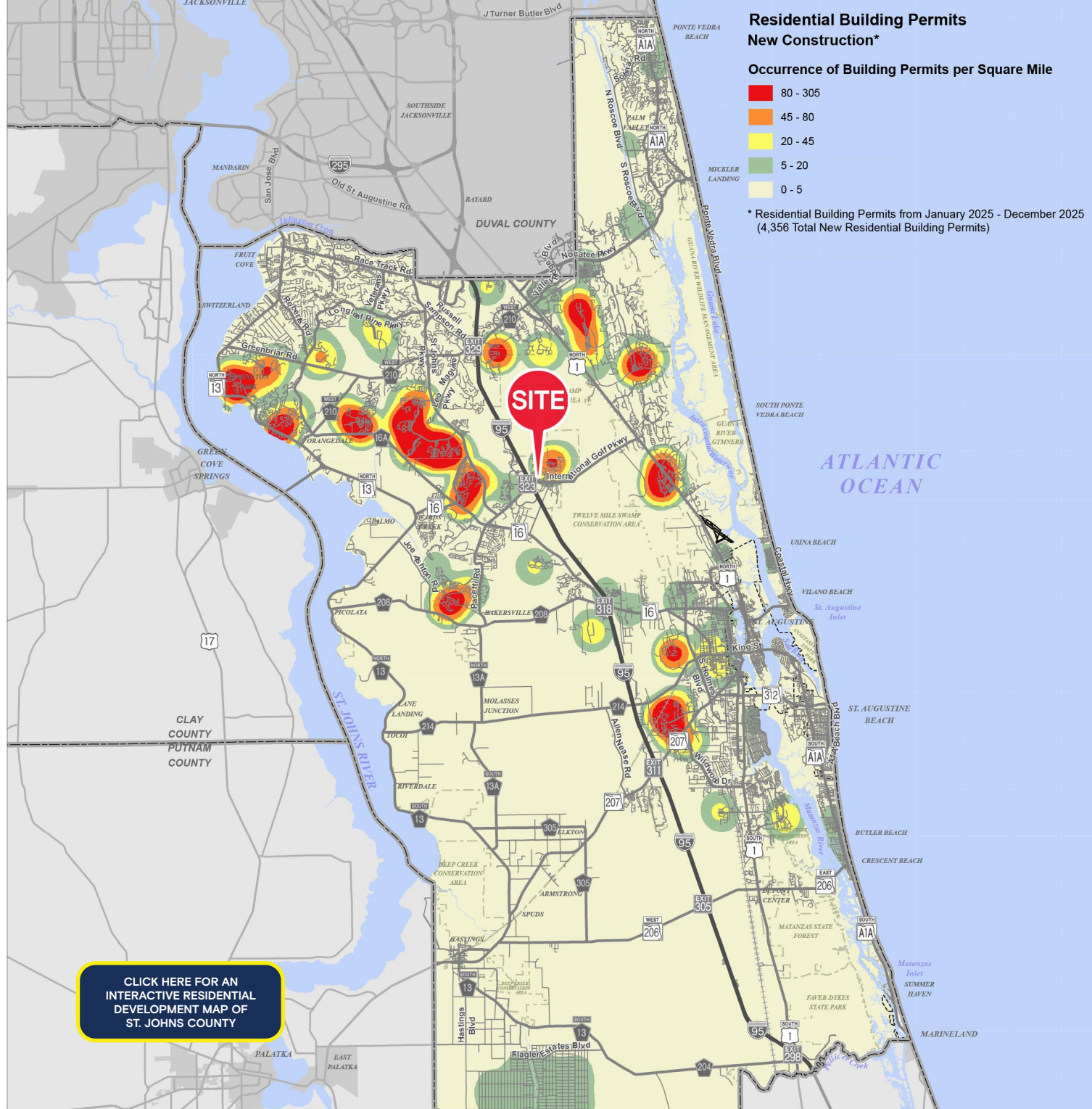
- **High Household Income:** According to the U.S. Census Bureau, the average household income in 2025 was \$143,324.
- **Educated Workforce:** St. Johns County boasts a highly skilled talent pool, with 30.6% of residents holding a Bachelor's Degree—9% above the national average.
- **Strong Professional Pipeline:** Nearly 20% of residents also hold graduate degrees or higher.

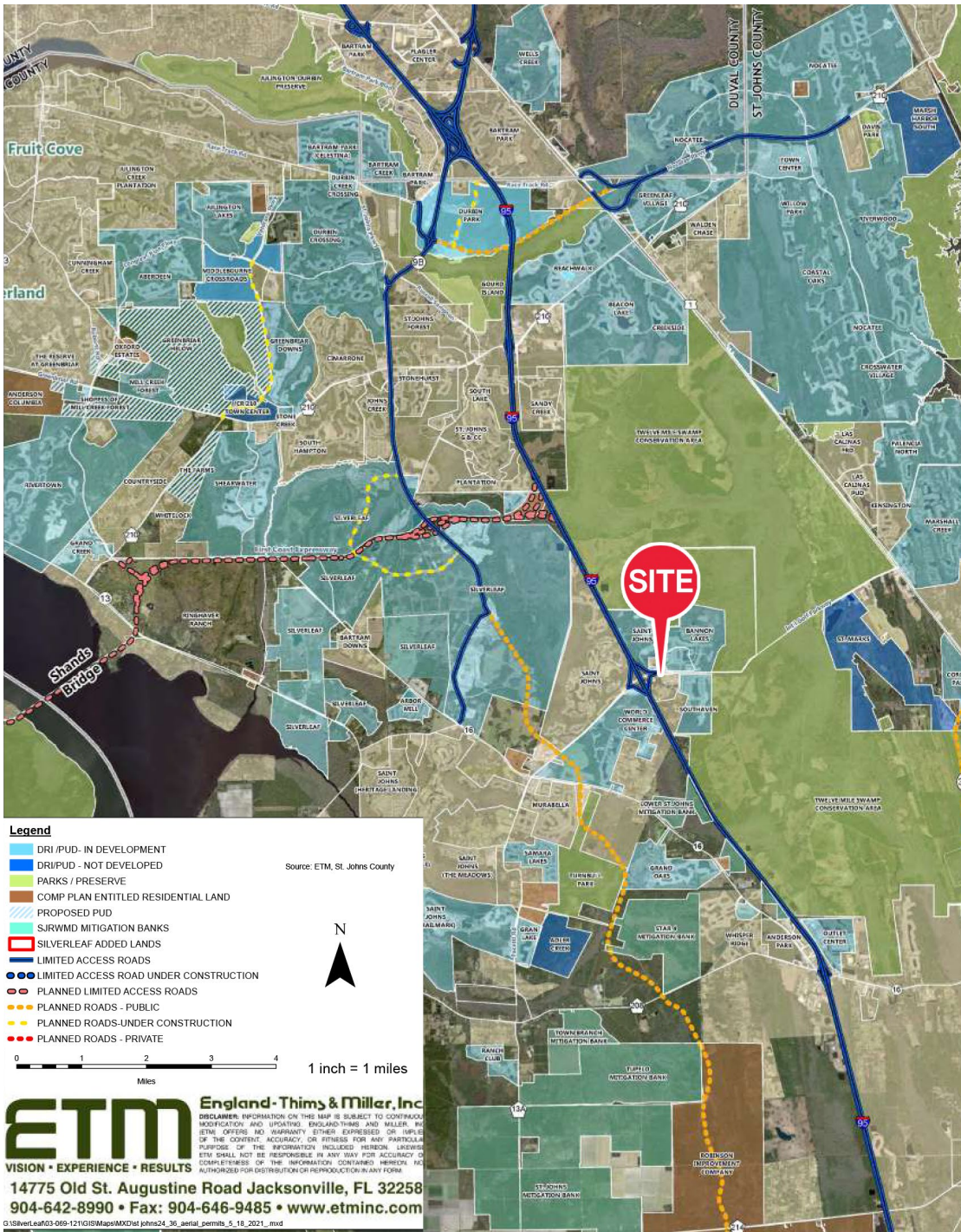
BUSINESS ENVIRONMENT

- **Top Industries:** The economy is supported by robust sectors including Accommodation and Food Services, Retail Trade, and Healthcare.
- **Leading Employers:** Major organizations driving the local economy include the United States Navy, Mayo Clinic, Bank of America, and Flagler College.
- **Strong Economic Output:** The region generates a Gross Regional Product (GRP) of \$18.25 billion.

STATS & FACTS

- According to *Niche 2025*, St. Johns County has the #1 Best School District in Florida.
- According to *Niche 2025*, St. Johns County is the #1 Best County to Live in Florida.
- St. Johns County is ranked #1 fastest growing county in Florida, according to *World Population Review 2025*.
- St. Augustine Beach was named one of the top 25 beaches in the United States by TripAdvisor.





Project	Approved	Built	Unbuilt
Aberdeen	1,615	1,492	123
Anderson Greenbriar (Bartram Ranch)	365	9	356
Arbor Mill	317	313	4
Bannon Lakes	934	461	473
Cimarrone	768	768	0
Cordova Palms	750	0	750
Durbin Crossing	1,814	1,801	13
Gran Lake	296	292	4
Grand Oaks	999	58	941
Grande Creek	400	0	400
Greenbriar Downs	818	15	803
Johns Creek	583	582	1
Julington Lakes	512	385	127
Kensington	299	299	0
Las Calinas PRD	115	115	0
Las Calinas PUD	26	26	0
ICI Middlebourne	426	0	426
Murabella	740	740	0
Nocatee	8,595	7,200	1,395
Oxford Estates	321	263	58
Palencia North	736	729	7
Rivertown	3,700	1,483	2,217
Saint Johns	7,598	4,798	2,800
Samara Lakes	860	856	4
Sandy Creek	383	303	80
Shearwater	1,918	950	968
SilverLeaf (Plantation)	11,400	683	10,717
South Hampton	779	769	10
St. Johns Forest	545	530	15
St. Johns Golf & Country	799	797	2
Stone Creek (Landing)	44	44	0
Stonehurst	530	517	13
Whisper Ridge	405	405	0
World Commerce Center	405	405	0
Total	50,795	28,088	22,707

Contact Brokers

Katy Figg

VICE PRESIDENT

katyfigg@katzretail.com

(704) 298-9464

Nancy Sumner

VICE PRESIDENT

nancysumner@katzretail.com

(404) 561-9447



KATZ & ASSOCIATES

RETAIL REAL ESTATE ADVISORS

katzretail.com

The information herein was obtained from third parties and has not been independently verified by Katz & Associates. Any and all interested parties should have their choice of experts inspect the property and verify all information. Katz & Associates makes no warranties or guarantees as to the information given to any prospective buyer or tenant. REV: 03.16.26