

The Colliers logo is located in the top right corner of the image. It consists of the word "Colliers" in a white serif font, centered within a blue rectangular box with a thin white border and a horizontal yellow and red stripe at the bottom.A photograph of the exterior of building 795. The building features a prominent stone-clad facade and large glass windows. The number "795" is visible above the entrance. The landscaping includes several small trees and bushes in front of the building.

For Sublease

A photograph of the exterior of building 797. The building has a stone-clad facade and large glass windows. The number "797" is visible above the entrance. The landscaping includes tall, thin evergreen trees and other plants.

# 795 & 797 San Antonio Rd

Palo Alto, CA

## CONTACT US:

### Rico Cheung

Executive Vice President  
+1 415.519.1749  
rico.cheung@colliers.com  
License # 01067557

### Kyle Hipple

Vice President  
+1 415.259.7928  
kyle.hipple@colliers.com  
License # 02032124

## Fully Built Out Wet Lab/Office Space

±6,800 SF  
795 San Antonio Rd

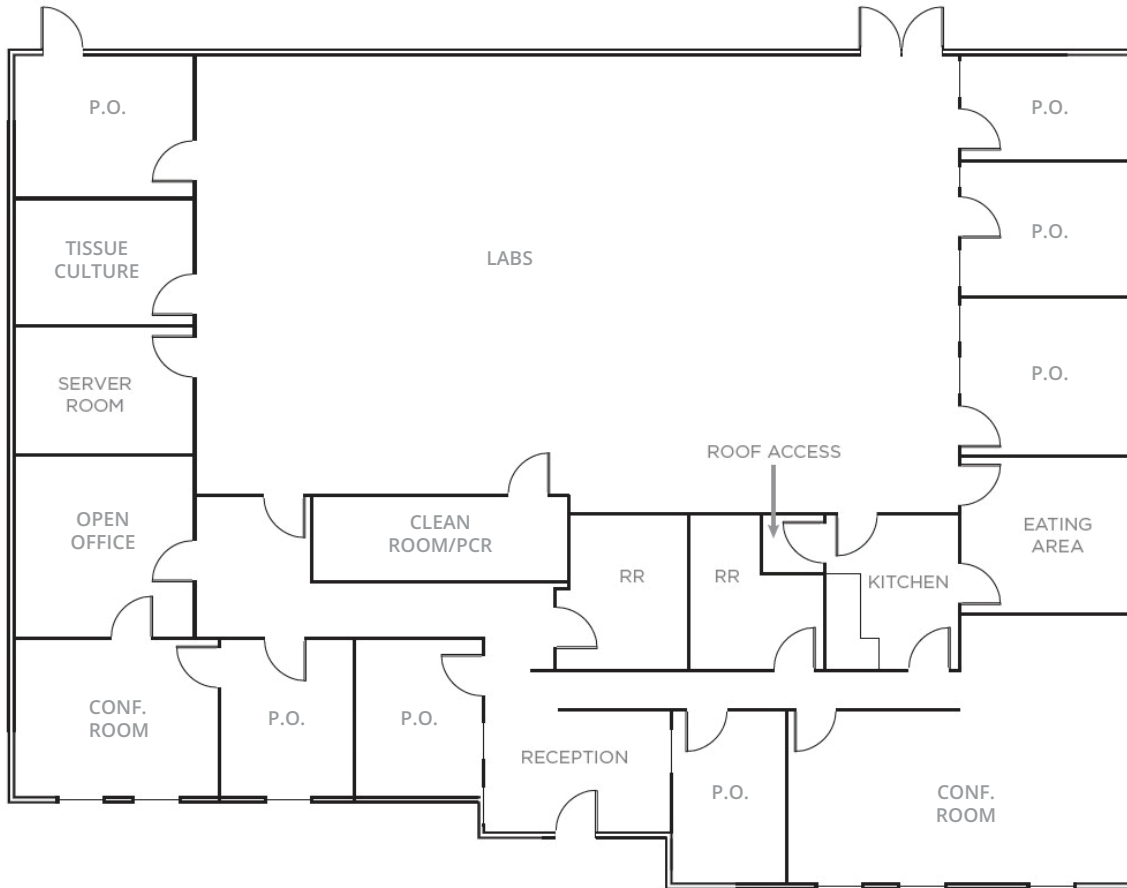
±4,200 SF  
797 San Antonio Rd

## Highlights

- Sublease thru February 28, 2026
- Parking - 3.5/1000
- Easy access to Highways 101 and 85.
- 4 miles to Stanford University
- Buildings can be subleased separately or together
- Available Immediately



Floorplan



Features

- 6,800 sf
- Large open lab
- Clean room/PCR lab
- Tissue culture lab
- Server room
- Kitchen & lunchroom
- Seven (7) private offices
- Two (2) conference rooms
- Power: 400A @ 240V  
(Sublessee should verify)



FOR SUBLEASE

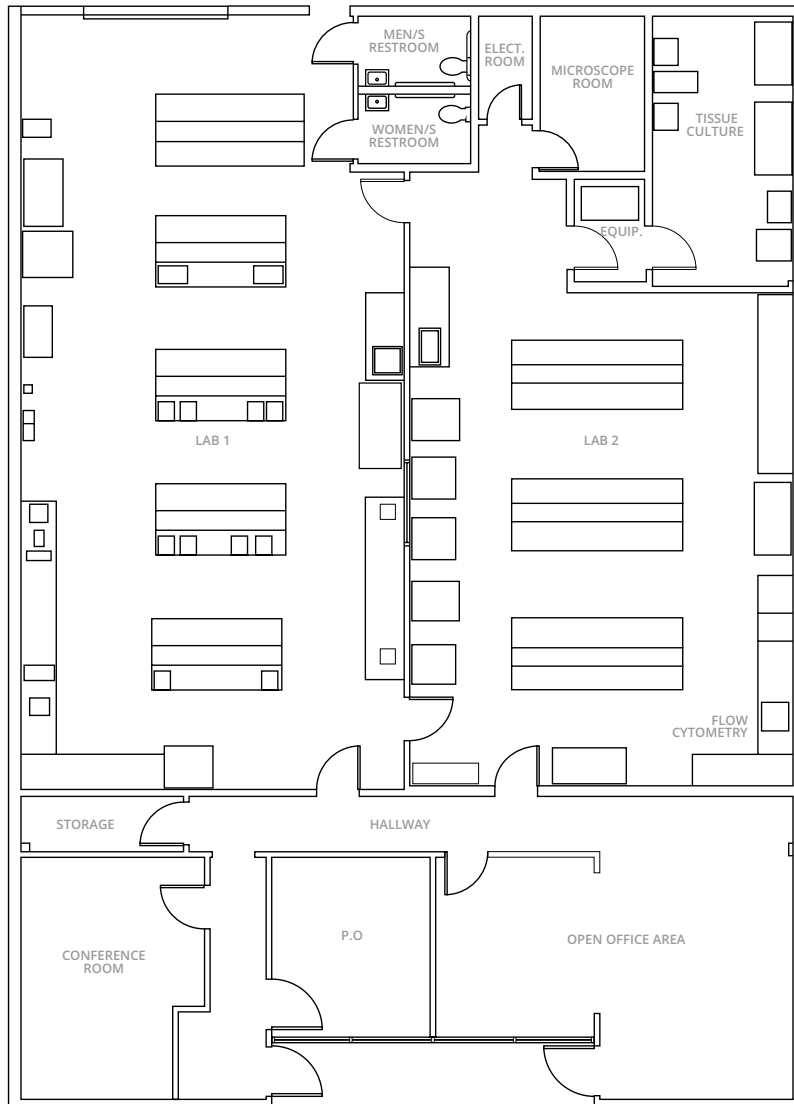
795 San Antonio Rd, Palo Alto, CA



Gallery



## Floorplan



### Features

- ±4,200 SF
- 70% labs
- Two large open labs with skylights
- One (1) chemical fume hood
- Tissue culture lab
- Three (3) biosafety cabinets
- Microscope room
- Flow cytometry
- One (1) private office
- One (1) conference room
- Open office area with 8 desks
- Power: 200A @ 240V (Sublessee should verify)



FOR SUBLEASE

797 San Antonio Rd, Palo Alto, CA



Gallery

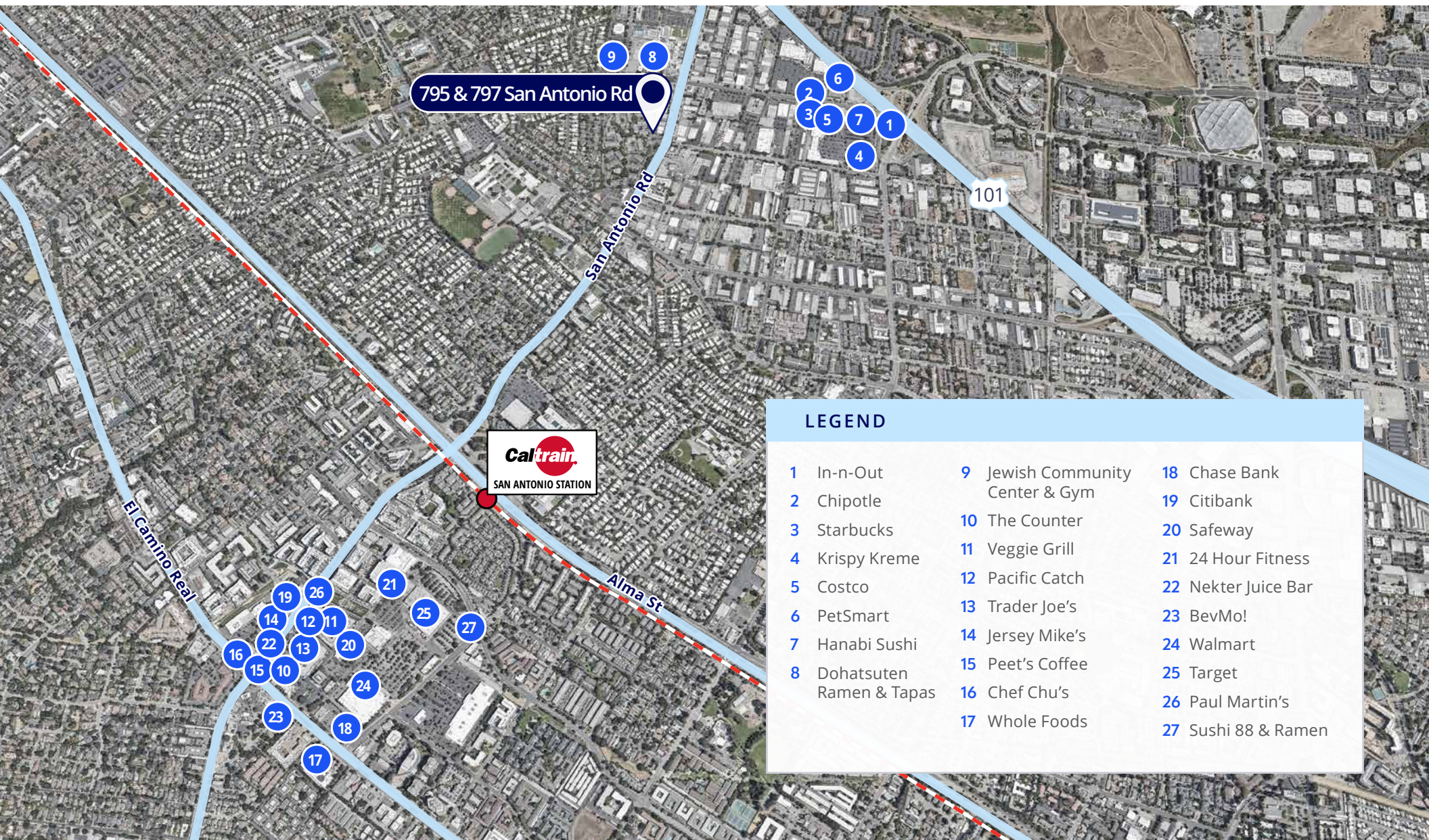




# 795 & 797 San Antonio Rd, Palo Alto, CA



## Amenities Aerial



**LEGEND**

1 In-n-Out	9 Jewish Community Center & Gym	18 Chase Bank
2 Chipotle	10 The Counter	19 Citibank
3 Starbucks	11 Veggie Grill	20 Safeway
4 Krispy Kreme	12 Pacific Catch	21 24 Hour Fitness
5 Costco	13 Trader Joe's	22 Nekter Juice Bar
6 PetSmart	14 Jersey Mike's	23 BevMo!
7 Hanabi Sushi	15 Peet's Coffee	24 Walmart
8 Dohatsuten Ramen & Tapas	16 Chef Chu's	25 Target
	17 Whole Foods	26 Paul Martin's
		27 Sushi 88 & Ramen



# 795 & 797 San Antonio Rd, Palo Alto, CA

## Life Science Companies in the Area





FOR SUBLEASE

# 795 & 797 San Antonio Rd, Palo Alto, CA



## Transportation Aerial

Caltrain info [www.caltrain.com](http://www.caltrain.com) | Stanford Marguerite Shuttle info: [transportation.stanford.edu/marguerite](http://transportation.stanford.edu/marguerite) | Bus routes: [www.vta.org](http://www.vta.org)



**SOUTH BOUND - MORNING WEEKDAY SERVICE**

San Francisco	6:05	6:15	6:35	6:45	6:59	7:05	7:15	7:35	7:45	7:59	8:05
22nd St	6:09	6:19	6:39	6:51	7:03	7:10	7:19	7:39	7:51	8:03	8:10
Bayshore	-	6:24	-	-	-	-	7:24	-	-	-	-
So. San Francisco	-	6:31	-	-	-	-	7:31	-	-	-	-
-San Bruno	-	6:35	-	-	-	7:20	7:35	-	-	-	8:20
Millbrae	6:22	6:39	6:52	7:04	7:16	-	7:39	7:52	8:04	8:16	-
Burlingame	6:26	6:44	-	-	-	7:27	7:44	-	-	-	8:27
San Mateo	6:30	6:48	-	7:11	-	7:31	7:48	-	8:11	-	8:31
Hayward Park	-	6:51	-	-	-	-	7:51	-	-	-	-
Hillsdale	6:34	6:54	-	-	7:24	7:35	7:54	-	-	8:24	8:35
Belmont	-	6:58	-	-	-	-	7:58	-	-	-	-
San Carlos	6:39	7:02	-	7:18	-	7:40	8:02	-	8:18	-	8:40
Redwood City	6:44	7:06	7:11	7:23	7:31	-	8:06	8:11	8:23	8:31	-
Menlo Park	6:50	-	7:17	7:29	-	7:48	-	8:17	8:29	-	8:48
Palo Alto	6:54	7:14	7:21	7:33	7:37	7:52	8:14	8:21	8:33	8:37	8:52
California Ave	6:57	-	-	7:37	-	-	-	-	8:37	-	-
San Antonio	-	-	-	7:41	-	-	-	-	8:41	-	-
Mountain View	7:04	-	7:28	7:46	7:50	7:59	-	8:28	8:46	8:50	8:59



FOR SUBLEASE

795 & 797 San Antonio Rd, Palo Alto, CA



CONTACT US:

**Rico Cheung**

Executive Vice President  
+1 415.519.1749  
rico.cheung@colliers.com  
License # 01067557

**Kyle Hipple**

Vice President  
+1 415.259.7928  
kyle.hipple@colliers.com  
License # 02032124

**Colliers**

203 Redwood Shores Pkwy, Suite 125  
Redwood City, CA 94065  
P: +1 650 486 2200  
colliers.com/sanfranciscobayarea



Accelerating success.