

PON SIVAKUMAR

[TORONTO NEIGHBOURHOODS](#) ➔

Clairlea-Birchmount



In this Neighbourhood Guide, you'll find out more about the people who live here as well as the schools, parks and recreation facilities, homes, and more.

PROPERTY PULSE

Homes in Clairlea-Birchmount range from older to newer, with a mix of single-detached houses and apartments.

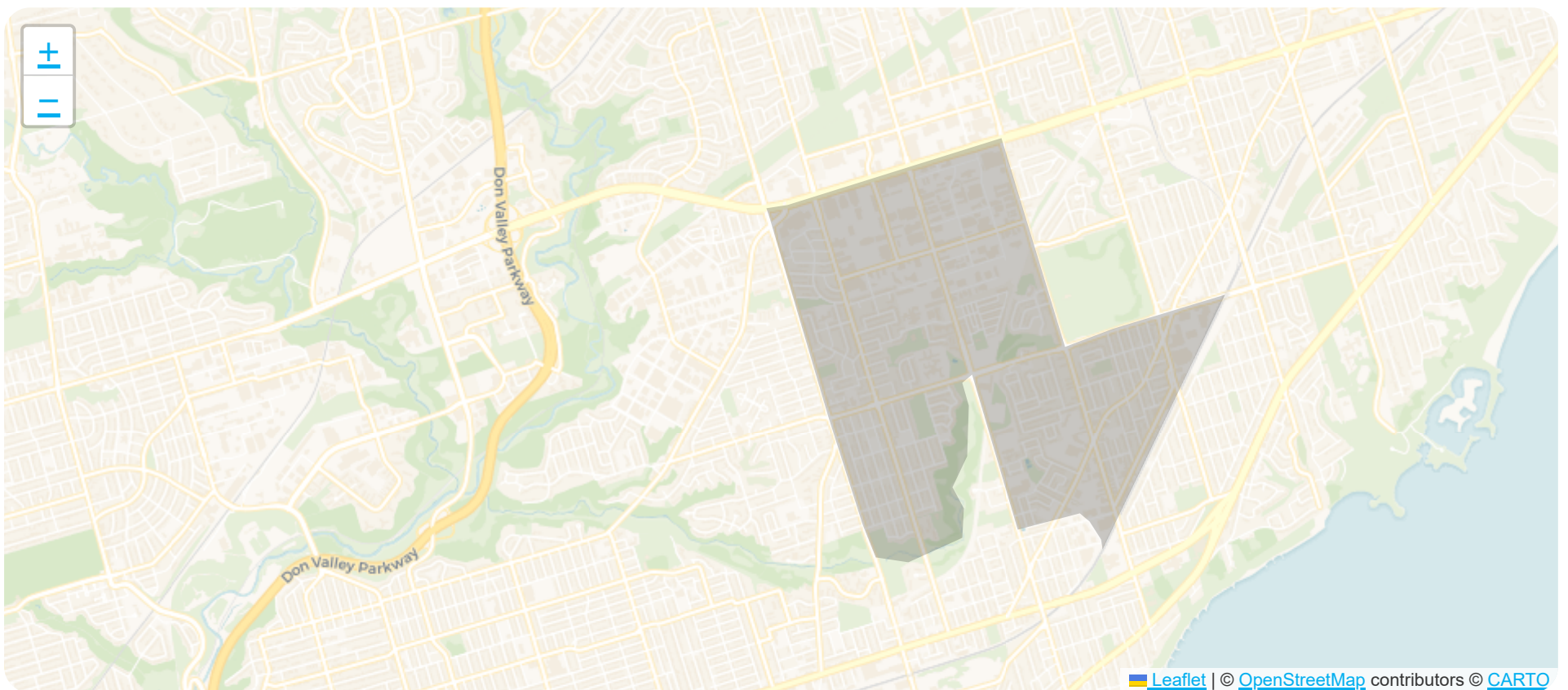
COMMUNITY CANVAS

Clairlea-Birchmount is home to a diverse community of families, young professionals, and immigrants.

WHAT YOU'LL LOVE

You'll love the great schools, abundant parks, and easy access to transit in this neighbourhood.

Have a look around Clairlea-Birchmount.



Clairlea-Birchmount has a consistent population, and is popular with people in their 20s, people in their 30s, people in their 40s, and people in their 50s. In the 19th century the intersection of St. Clair and Victoria Park was home to a small village named Moffat's Corners, and the rest of the region was rural. Clairlea was one of the first parts of Scarborough to be developed as a Toronto suburb, being transformed in the early 1950s. Today it is a middle income neighbourhood that features many affordable homes and mature streets.

People & Families in Clairlea-Birchmount

Families with kids make up 52% of households in this neighbourhood, while couples without children make up 18% of households and 20% of households are one person living alone. People in Clairlea-Birchmount come from 154 different ethnic origins, and 52% are first-generation immigrants, while 26% are second-generation immigrants.

Neighbourhood Population

26,984

Household Size

- 1 person - 20%
- 2 persons - 27%
- 3 persons - 20%
- 4 persons - 18%
- 5 or more persons - 12%

Children Per Family

- 1 child - 34%
- 2 children - 28%
- 3 or more children - 10%

Most Common Ethnic Origins

- Canadian - 15%
- Filipino - 12%
- English - 10%
- Chinese - 9%
- Irish - 8%

Specific Age Groups

- 0 to 4 years - 5%
- 5 to 9 years - 5%
- 10 to 14 years - 5%
- 15 to 19 years - 6%
- 20 to 29 years - 12%
- 30 to 39 years - 14%
- 40 to 49 years - 13%
- 50 to 59 years - 15%
- 60 to 69 years - 9%
- over 70 years - 6%

Household Types

- One-person households - 20%
- Non-family households - 4%
- Families with children - 52%
- Couples without children - 17%
- Multiple families in household - 4%

Broad Age Ranges

- 0 to 14 years - 16%
- 15 to 64 years - 69%
- 65 years and over - 13%

Age of Primary Household Maintainer

- 15 to 24 years - 1%
- 25 to 34 years - 12%
- 35 to 44 years - 20%
- 45 to 54 years - 26%
- 55 to 64 years - 19%
- 65 to 74 years - 11%
- 75 to 84 years - 6%
- 85 years and over - 2%

CLAIRLEA-BIRCHMOUNT SCHOOLS

Clairlea-Birchmount has great elementary schools, great secondary schools, elementary special programs, and secondary special programs. There are 13 public schools, 8 Catholic schools, and 1 private school serving Clairlea-Birchmount. The special programs offered at local schools include French Immersion, Islamic, and International Baccalaureate.

Public Schools

13

Catholic Schools

8

Private Schools

1

Public

- [SATEC @ WA Porter Collegiate Institute](#)
- [ÉE Jeanne-Lajoie](#)
- [Clairlea Public School](#)
- [Birchmount Park Collegiate Institute](#)
- [Collège français secondaire](#)
- [J. G. Workman Public School](#)
- [General Brock Public School](#)
- [Danforth Gardens Public School](#)
- [Taylor Creek Public School](#)
- [Regent Heights Public School](#)
- [Robert Service Senior Public School](#)
- [Norman Cook Junior Public School](#)
- [ÉS Michelle-O'Bonsawin](#)

Catholic

- [Our Lady of Fatima Catholic School](#)
- [St. Dunstan Catholic School](#)
- [St. Joachim Catholic School](#)
- [ÉEC du Bon-Berger](#)
- [St. Maria Goretti Catholic School](#)
- [ÉSC Père-Philippe-Lamarche](#)
- [ÉEC Georges-Étienne-Cartier](#)
- [Immaculate Heart of Mary Catholic School](#)

Private

- [Khairul Ummah School](#)

PON SIVAKUMAR

sports parks, dog parks, and skating. There are 13 parks in Clairea-Birchmount, with 48 recreational facilities in total. The average number of facilities per park is 3.

Number of Parks

13

Number of Recreation Facilities

48

Recreation Facilities in Neighbourhood Parks

- Playgrounds - 11
- Dog Park - 1
- Pool - 1
- Rink - 1
- Tennis Courts - 2
- Basketball Court - 1
- Ball Diamond - 1
- Sports Fields - 12
- Community Centres - 2
- Splash Pads - 3
- Sports Court - 1
- Outdoor Games Facilities - 3
- Trails - 3
- Arts/Performance Facility - 1
- Fitness/Weight Rooms - 2
- Gyms - 3

Mortgages Simplified

Fast Pre-Approvals

Get pre-approved in as little as 20 minutes.

Lowest Rates In Canada

Perch clients save an average of \$3,000 on their mortgages.

Track Your Properties

Perch monitors market conditions, property valuation and more and alerts you any time you could save money.

Canada's Best Rates

Getting Around in Clairlea-Birchmount

There are 243 transit stops in this neighbourhood. Rail stations include Kennedy Station. In Clairlea-Birchmount, there are a mix of vehicle and transit commuters and most commute within the city.

Commute Destination for Residents

- Commute within the city - 88%
- Commute to another city - 11%

Commute Types

- Vehicle - 51%
- Transit - 44%
- Walk/bike - 2%

Commute Times of Residents

- 15 to 29 minutes - 20%
- 30 to 44 minutes - 28%
- 45 to 59 minutes - 21%
- 60 minutes and over - 18%
- Less than 15 minutes - 11%

Work and Education in Clairlea-Birchmount

In this neighbourhood, 34% of adult residents hold a bachelor’s degree or higher and 63% have any postsecondary education. The health care and social assistance industry is the most common for residents.

Household Income

- Under \$30,000 - 15%
- \$30,000 to \$39,999 - 8%
- \$40,000 to \$49,999 - 8%
- \$50,000 to \$59,999 - 7%

Most Common Occupations (Top 3)

- Sales and service occupations - 30%
- Business, finance and administration occupations - 18%
- Trades, transport and equipment operators and related occupations - 11%

\$90,000 to \$99,999 - 5%

\$100,000 to \$124,999 - 11%

\$125,000 to \$149,999 - 7%

\$150,000 to \$199,999 - 7%

\$200,000 and over - 3%

Most Common Industries (Top 3)

Health care and social assistance - 11%

Retail trade - 11%

Accommodation and food services - 9%

Employment

Employed - 59% of people over age 15 are employed

Unemployed - 5% are unemployed

Not in the labour force - 34% are retired, students, homemakers, etc.

Clairlea-Birchmount Homes

In Clairlea-Birchmount, there are a mix of home types. This neighbourhood has a consistent population, with 37% of households having moved within the past 5 years and 11% having moved within the past year. It has a mix of older and newer homes and is mostly owner-occupied.

Home Types

Single-detached house - 34%

Semi-detached house - 11%

Duplex - 7%

Row house - 11%

Low-rise apartment/condo - 14%

High-rise apartment/condo - 21%

Condominium Status

Condominium - 11%

Not condominium - 88%

Number of Bedrooms in Homes

1 bedroom - 16%

2 bedrooms - 25%

3 bedrooms - 35%

No bedrooms - 0%

4 or more bedrooms - 21%

Period of Home Construction

1961 to 1980 - 24%

1981 to 1990 - 3%

1991 to 2000 - 5%

2001 to 2005 - 3%

2006 to 2010 - 15%

Renters & Owners

Owner - 65%

Renter - 34%



Mortgages Simplified

- ✓ **Fast Pre-Approvals**
Get pre-approved in as little as 20 minutes.
- ✓ **Lowest Rates In Canada**
Perch clients save an average of \$3,000 on their mortgages.
- ✓ **Track Your Properties**
Perch monitors market conditions, property valuation and more and alerts you any time you could save money.

Canada's Best Rates

Get access the lowest rates from 40+ of the top lenders in Canada.



See Clairlea-Birchmount listings

REALM users log in
here to view listings

or

View listings publicly
on TRREB.ca

No REALM account? Ask your agent