

44 DOOR CROSS-DOCK ON 7.08± ACRES

FOR LEASE

2400 Beaver Road, Hyattsville, MD 20785



\$66,000/month, NNN

PROPERTY DETAILS

21,040± SF
BUILDING:

- 12,430± SF dock
- 44 loading positions
- 1,500± SF office (2 levels)
- 7,110± SF shop (3 bays)

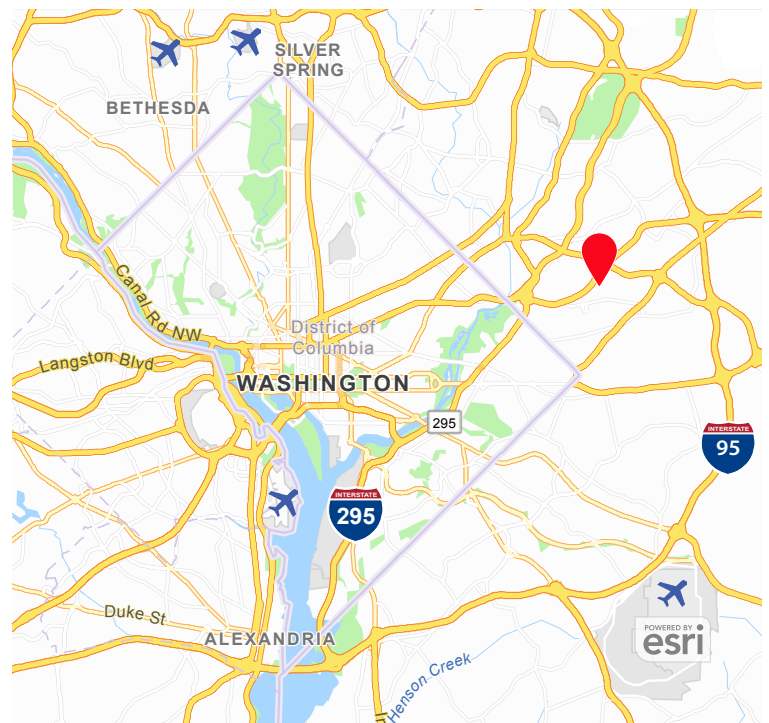
7.08± ACRE SITE:

- 4.54± improved acres
- Asphalt paved, fenced & lit yard
- I-2 Industrial zoning



LOCATION HIGHLIGHTS

Located 3± miles from US 50, 2.2± miles from Baltimore Washington Parkway, and 2.7± miles from the District of Columbia (DC).



Burr & Temkin

Transportation Real Estate Specialists Since 1983



Eric McFarlin
Principal
336.817.2969
ericm@burrtemkin.com

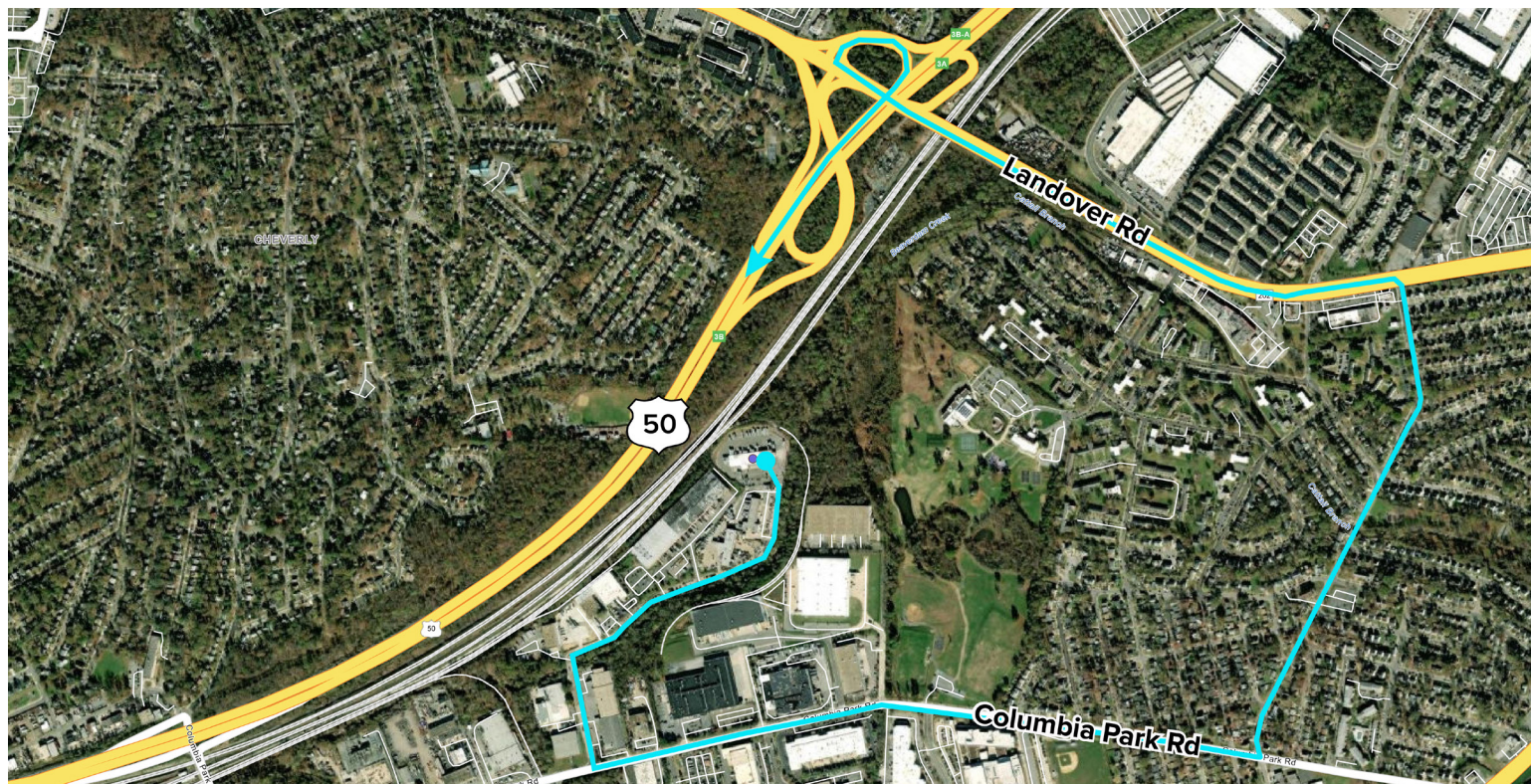
Parker Dotson
Broker
336.682.2560
parker@burrtemkin.com

This statement is based upon information we believe to be correct and is obtained from sources we regard as reliable, but we assume no liability for errors or omissions therein.

44 DOOR CROSS-DOCK ON 7.08± ACRES

FOR LEASE

2400 Beaver Road, Hyattsville, MD 20785



Burr & Temkin
Transportation Real Estate Specialists Since 1983



Eric McFarlin
Principal
336.817.2969
ericm@burrtemkin.com

Parker Dotson
Broker
336.682.2560
parker@burrtemkin.com

This statement is based upon information we believe to be correct and is obtained from sources we regard as reliable, but we assume no liability for errors or omissions therein.