

FOR SALE

605 Main Street,
Velma, OK 73491



Johnson
Commercial Group

JohnsonCommercialGroup.com



Offering Summary

Sale Price: \$195,000

Size: 1.16 Acres +/-

Building Size: 5,440 SF

Price Per SF: \$35.85 SF

Year: 1965

Zoning: R1

Chris Johnson
chris@jcgok.com
405.435.3572

Property Overview

This 5,440 SF building sits on approximately 1.16 acres in the heart of Velma, Oklahoma. Built in 1965 and zoned R-1, the property has been used as both a church and a daycare facility. The layout includes six classrooms, a kitchen, a large sanctuary, a welcoming foyer, multiple storage closets, and three bathrooms. Outside, the property features a fenced playground area, making it well-suited for childcare or educational use. With flexible space and a price of just \$35.85 per square foot, this property offers a rare opportunity to acquire nearly an acre and a well-maintained building in a central location. Ideal for continued ministry, daycare operations, or future repurposing,



BRICK & BEAM
REALTY

FOR SALE

605 Main Street,
Velma, OK 73491



Johnson
Commercial Group

JohnsonCommercialGroup.com



Chris Johnson
chris@jcgok.com
405.435.3572



BRICK & BEAM
REALTY

FOR SALE

605 Main Street,
Velma, OK 73491



Johnson
Commercial Group

JohnsonCommercialGroup.com



Chris Johnson
chris@jcgok.com
405.435.3572



BRICK & BEAM
REALTY

FOR SALE

605 Main Street,
Velma, OK 73491



Johnson
Commercial Group

JohnsonCommercialGroup.com



Chris Johnson
chris@jcgok.com
405.435.3572



BRICK & BEAM
REALTY

FOR SALE

605 Main Street,
Velma, OK 73491



Johnson
Commercial Group

JohnsonCommercialGroup.com



Chris Johnson
chris@jcgok.com
405.435.3572



BRICK & BEAM
REALTY

FOR SALE

605 Main Street,
Velma, OK 73491



Johnson
Commercial Group

JohnsonCommercialGroup.com



Chris Johnson
chris@jcgok.com
405.435.3572



BRICK & BEAM
REALTY

FOR SALE

605 Main Street,
Velma, OK 73491



Johnson
Commercial Group

JohnsonCommercialGroup.com



Chris Johnson
chris@jcgok.com
405.435.3572



BRICK & BEAM
REALTY

FOR SALE

605 Main Street,
Velma, OK 73491



Johnson
Commercial Group

JohnsonCommercialGroup.com



Chris Johnson
chris@jcgok.com
405.435.3572



BRICK & BEAM
REALTY

FOR SALE

605 Main Street,
Velma, OK 73491

 **Johnson**
Commercial Group

JohnsonCommercialGroup.com



Chris Johnson
chris@jcgok.com
405.435.3572



BRICK & BEAM
REALTY

FOR SALE

605 Main Street,
Velma, OK 73491



Johnson
Commercial Group

JohnsonCommercialGroup.com



Chris Johnson
chris@jcgok.com
405.435.3572



BRICK & BEAM
REALTY

FOR SALE

605 Main Street,
Velma, OK 73491

 **Johnson**
Commercial Group

JohnsonCommercialGroup.com



Chris Johnson
chris@jcgok.com
405.435.3572



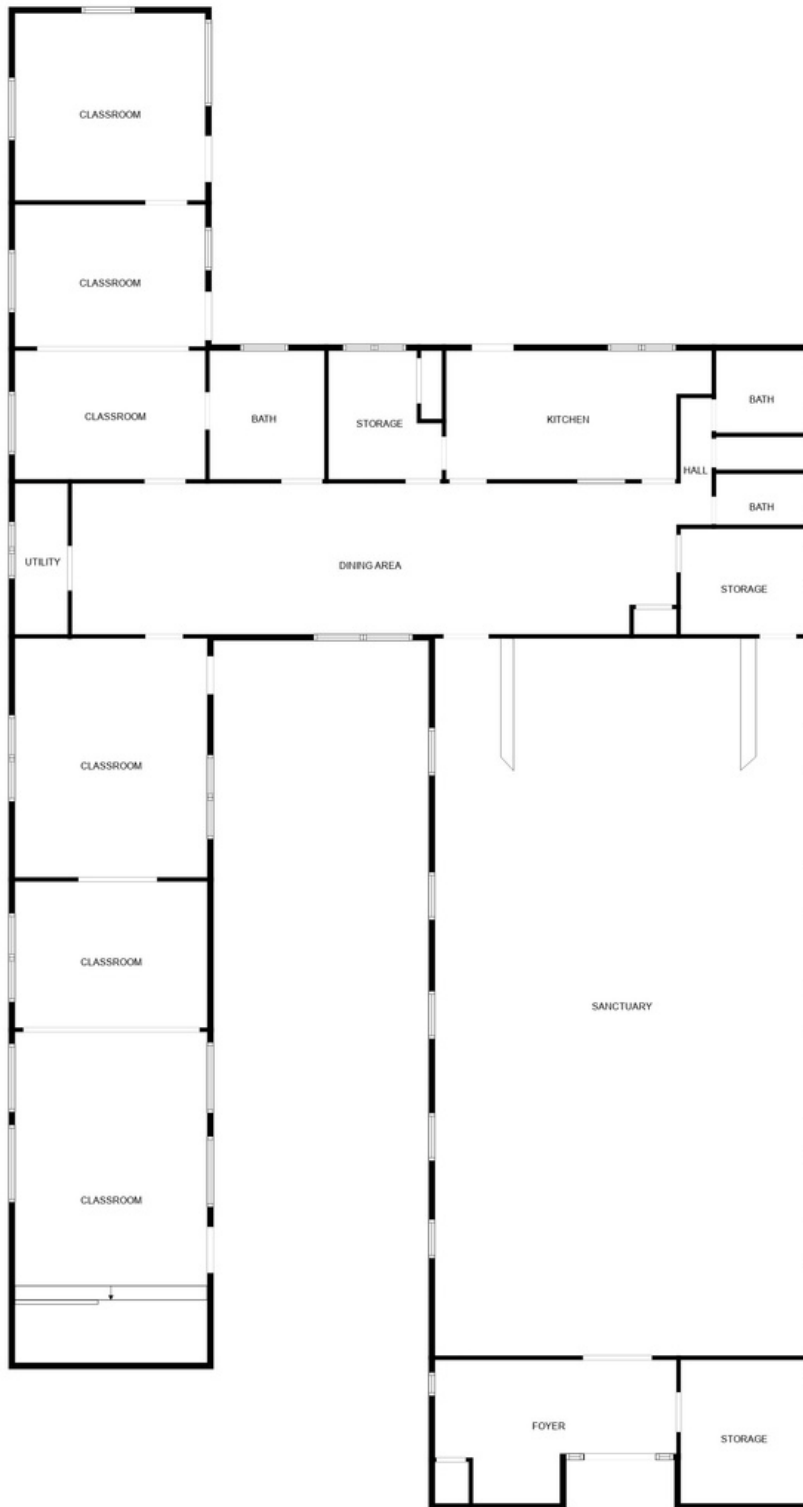
BRICK & BEAM
REALTY

FOR SALE

605 Main Street,
Velma, OK 73491

 **Johnson**
Commercial Group

JohnsonCommercialGroup.com



Chris Johnson
chris@jcgok.com
405.435.3572



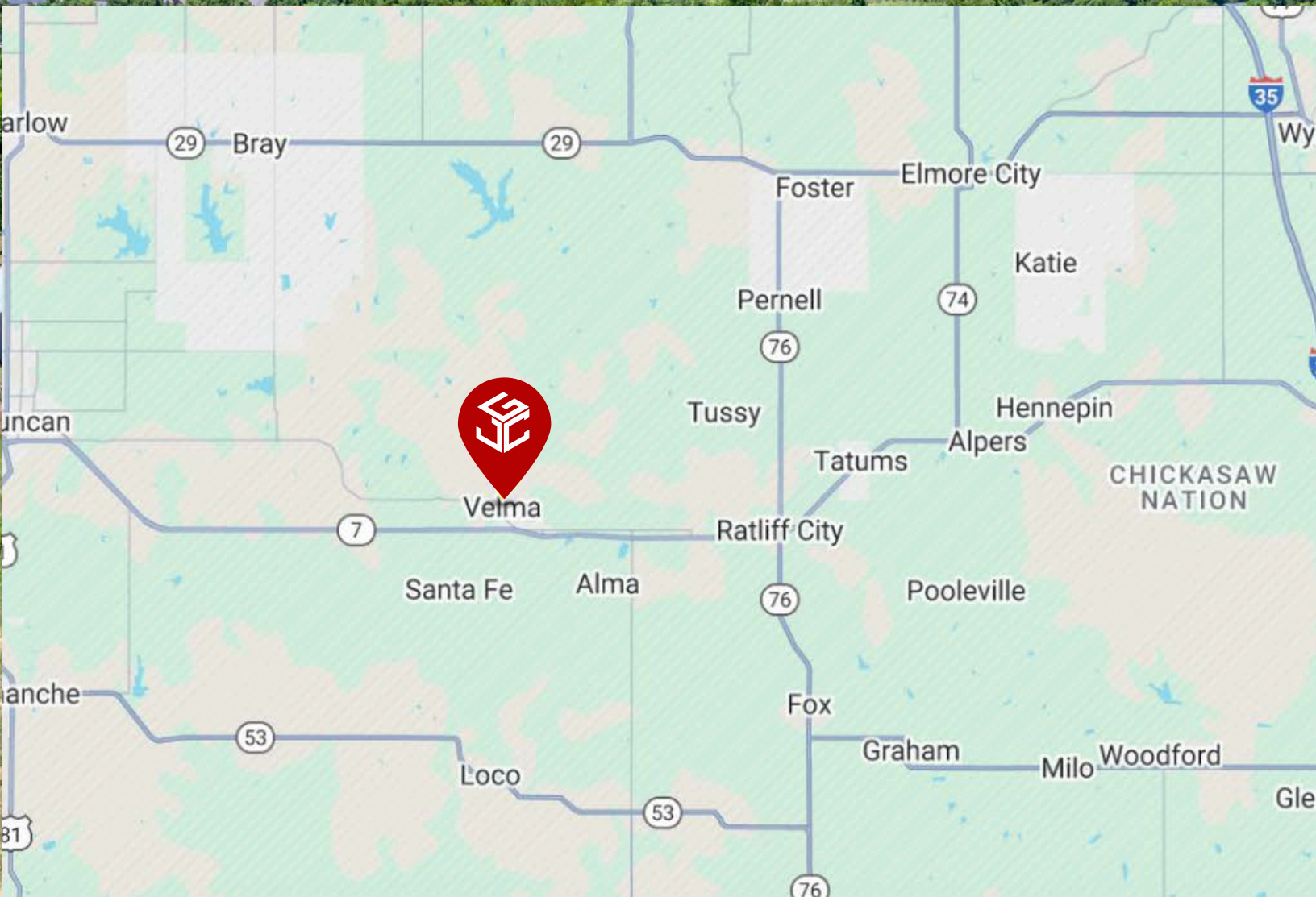
BRICK & BEAM
REALTY

FOR SALE

605 Main Street,
Velma, OK 73491

 **Johnson**
Commercial Group

JohnsonCommercialGroup.com



Chris Johnson
chris@jcgok.com
405.435.3572



BRICK & BEAM
REALTY

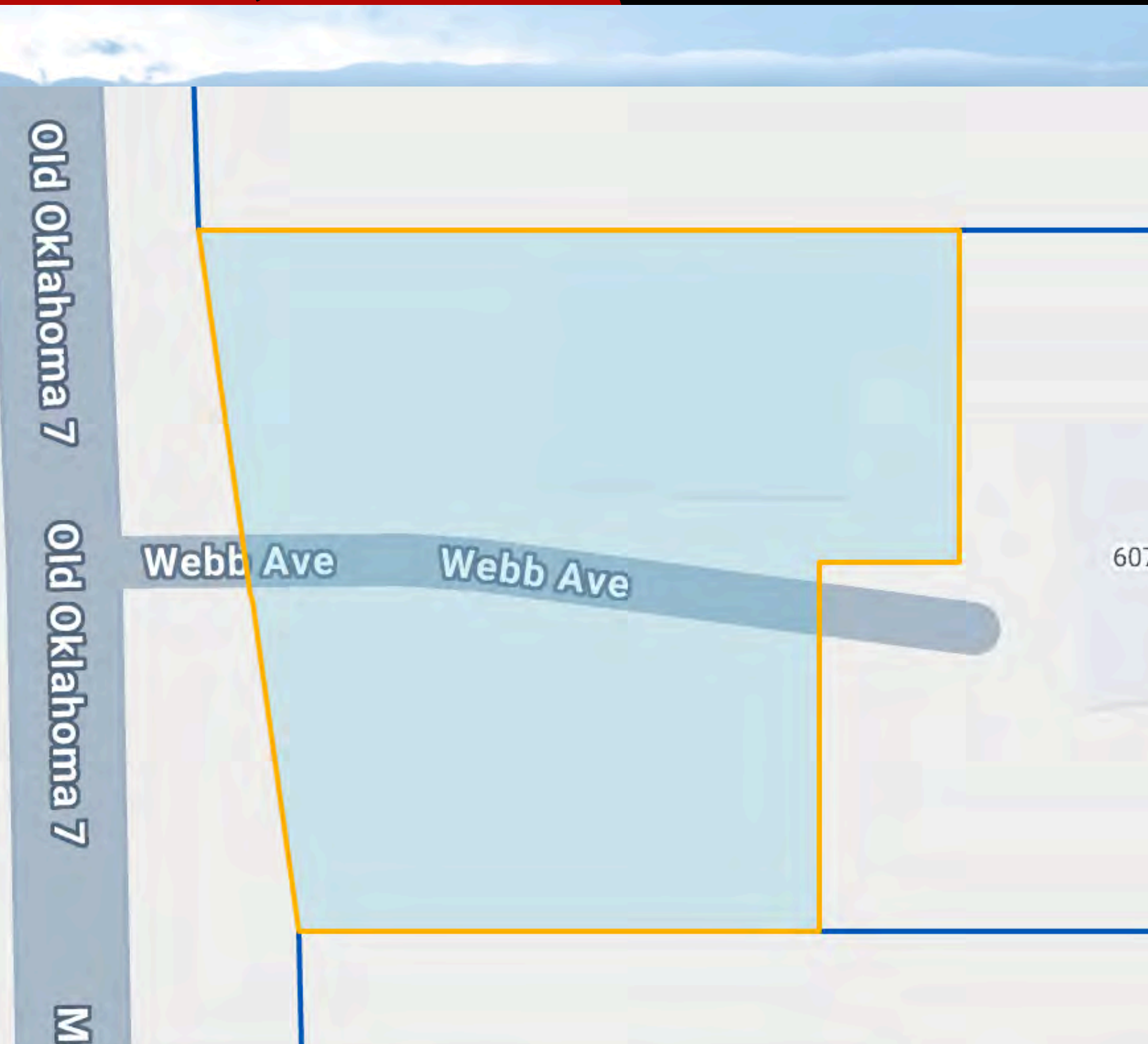
FOR SALE

605 Main Street,
Velma, OK 73491



Johnson
Commercial Group

JohnsonCommercialGroup.com



Chris Johnson
chris@jcgok.com
405.435.3572



BRICK & BEAM
REALTY

FOR SALE

605 Main Street,
Velma, OK 73491



Johnson
Commercial Group

JohnsonCommercialGroup.com



Disclaimer

A real estate broker is not authorized to give legal or tax advice. No representation is made by Johnson Commercial Group, its agents or employees, as to the legal effect or tax consequences of the information contained herein or any transaction relating thereto. Although all information furnished regarding property sales or financing options are from sources deemed to be reliable, such information has not been verified and no express representation is made on, or is in any way implied as to the accuracy thereof and is subject to errors, omissions, change of price, or other conditions prior to sale or withdrawal without notice.

Chris Johnson
chris@jcgok.com
405.435.3572



BRICK & BEAM
REALTY