

RETAIL CENTER

28935 Southfield Road / Lathrup Village, MI



MID-AMERICA®
Real Estate-Michigan, Inc.

FOR LEASE

AVAILABLE
1,700 SF



RETAIL OPPORTUNITY

RETAIL CENTER



Address

28935 Southfield Road
Lathrup Village, MI 48076

Availability

1,700 SF Endcap

Features

- 1,700 SF prime endcap space available, well situated on the SWQ of 12 Mile and Southfield Roads.
- Join Papa's Pizza, Total by Verizon and Vintage Village Fine Wine, which brings many visitors to the center.
- Area retailers include Jersey Mike's, Olga's, Auto Zone, Sherwin Williams, and many more.
- Parking is provided along Southfield Road, as well as a parking lot at the south end of the building.

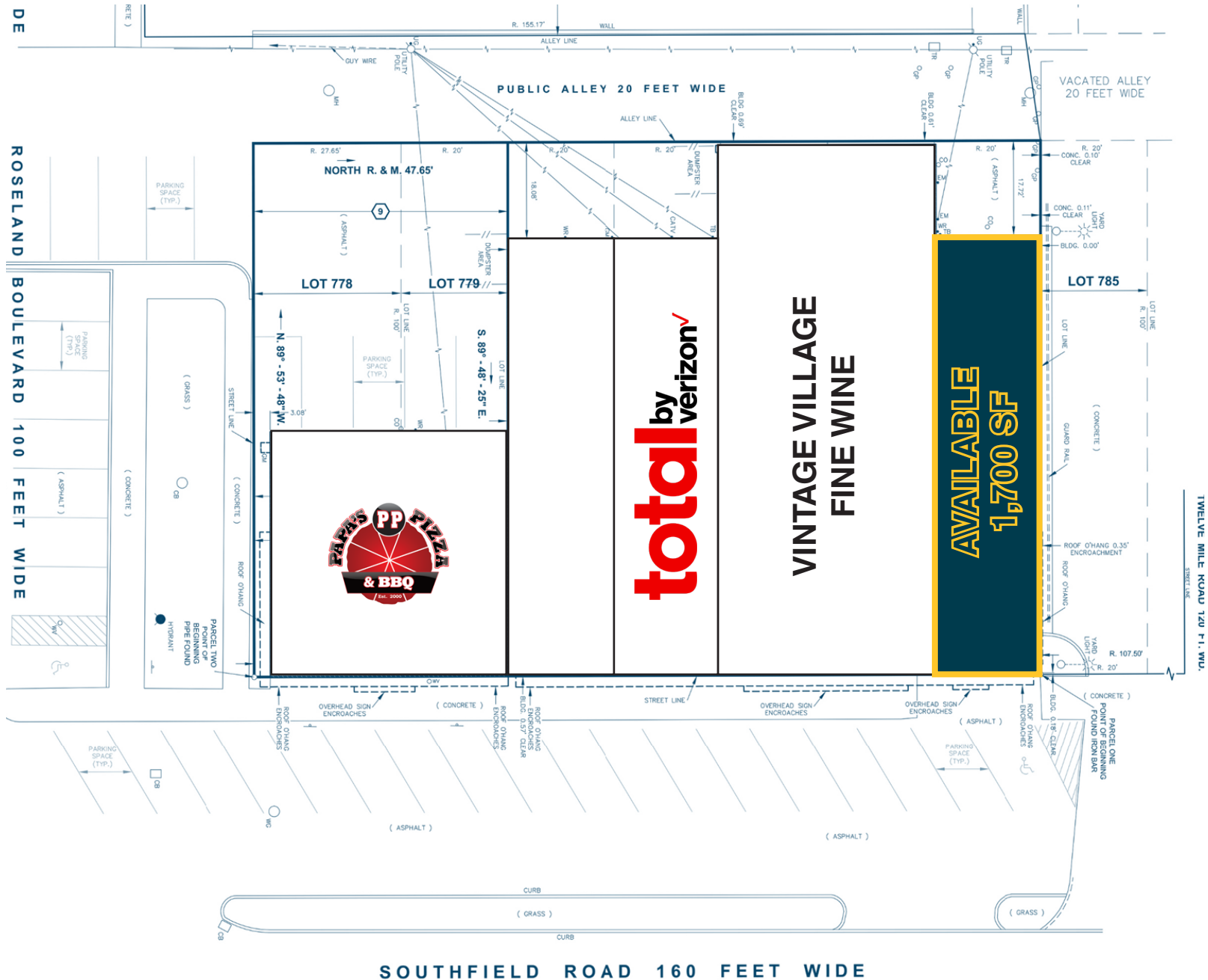
Area Tenants



Demographics (2024)

	1 MILE	3 MILES	5 MILES
POPULATION	12,564	109,284	285,466
HOUSEHOLDS	5,660	47,821	129,807
AVG HOUSEHOLD INCOME	\$111,143	\$133,234	\$126,851
DAYTIME POPULATION	13,315	128,164	338,599

RETAIL CENTER



RETAIL CENTER



RETAIL CENTER

Jake
Lievois

Mid-America Real Estate -
Michigan, Inc.

T: 248.855.6800

JLievois@MidAmericaGrp.com

Anthony
Mekani

Mid-America Real Estate -
Michigan, Inc.

T: 248.855.6800

AMekani@MidAmericaGrp.com



MID-AMERICA®
Real Estate-Michigan, Inc.

38500 Woodward Ave, Suite 100
Bloomfield Hills, Michigan 48304
248.855.6800

MidAmericaGrp.com



CONTACT