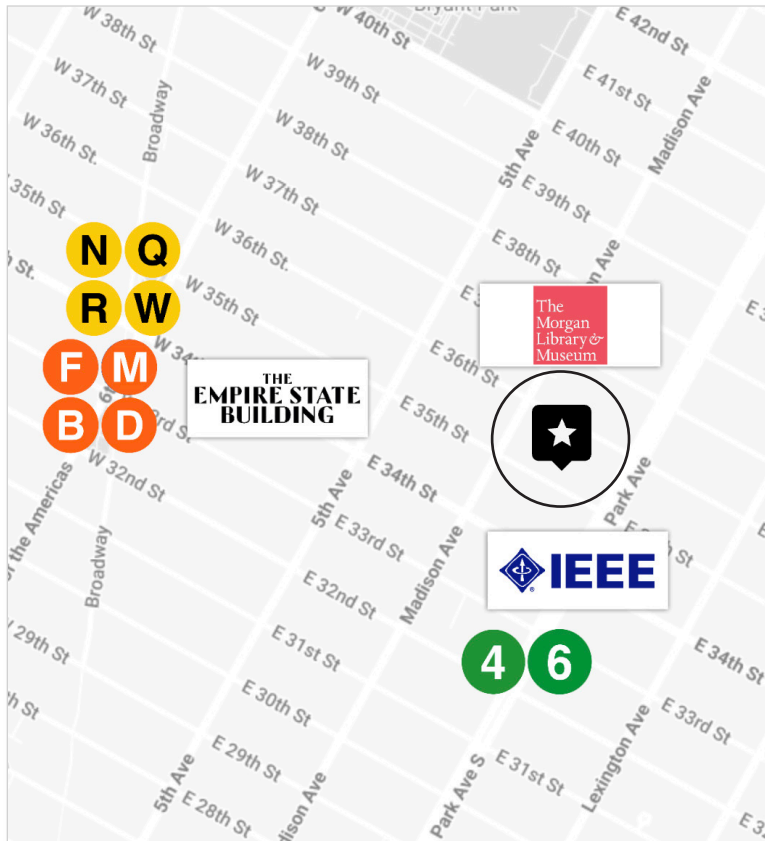


# SECOND FLOOR **MEDICAL OFFICE** FOR LEASE

PRICE	INQUIRE
APPROX SIZE	2,357+/- RSF
TERM	NEGOTIABLE
POSSESSION	IMMEDIATE



**35 EAST 35TH STREET, 202**  
BETWEEN MADISON AND PARK AVENUE

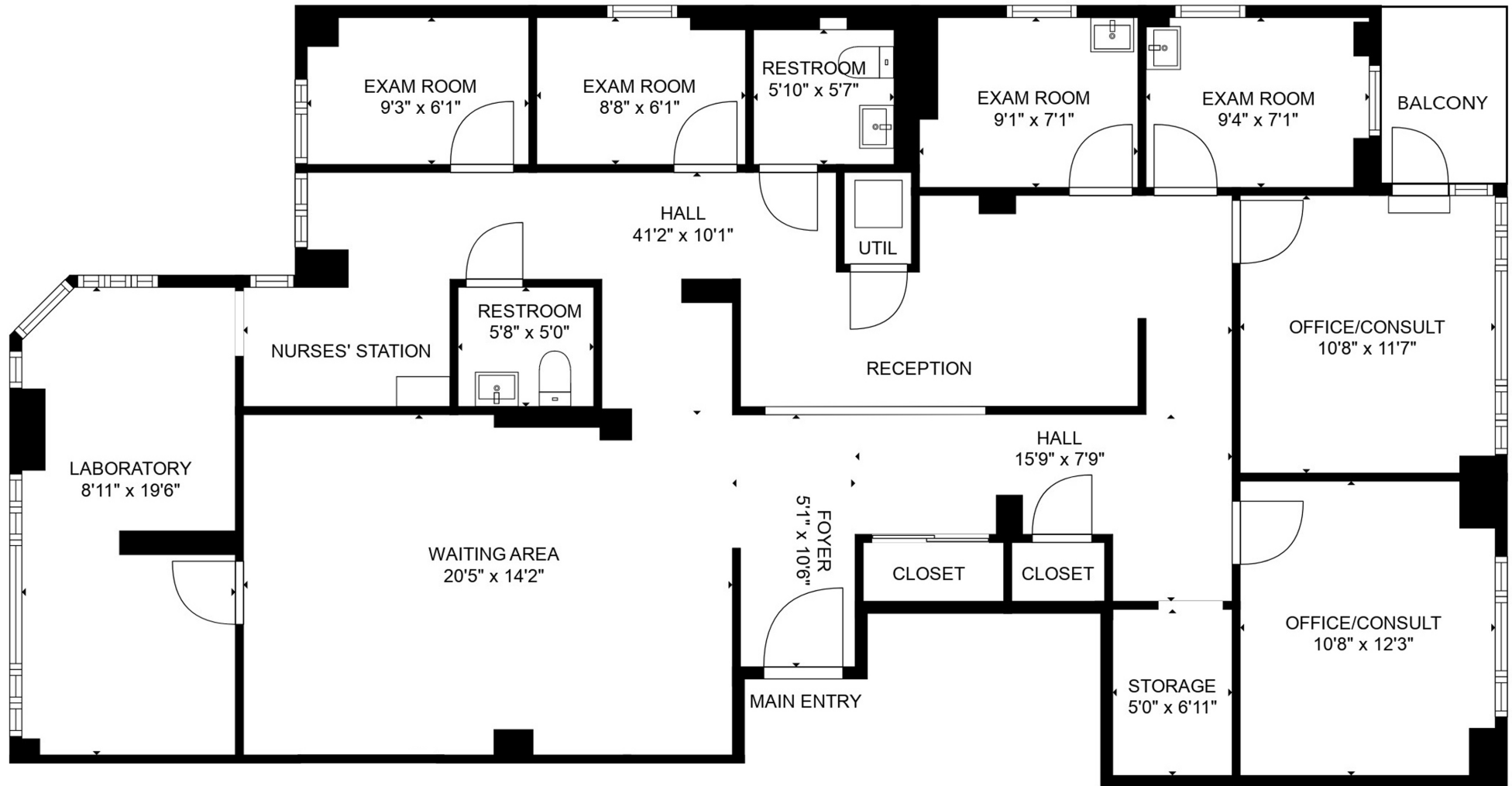
## LAYOUT

- LARGE RECEPTION WITH SEATING FOR FIVE
- LARGE WAITING AREA
- FOUR EXAM ROOMS
- TWO OFFICES/CONSULTS (ONE WITH BALCONY)
- NURSES' STATION
- LABORATORY
- TWO CLOSETS
- STORAGE ROOM
- TWO RESTROOMS

## ADDITIONAL FEATURES

- 15 WINDOWS (PRESENT IN NEARLY EVERY ROOM)
- CENTRAL AIR CONDITIONING
- PRIVATE BALCONY
- ADAPTABLE TO ANY MEDICAL SPECIALTY





**Paul L Wexler**

LICENSED ASSOCIATE  
REAL ESTATE BROKER

P: 212.836.1075  
E: PWexler@corcoran.com

**Josef Yadgarov**

LICENSED ASSOCIATE  
REAL ESTATE BROKER

P: 212.836.1097  
E: josef.yadgarov@corcoran.com

**Kurt Herold**

LICENSED ASSOCIATE  
REAL ESTATE BROKER

P: 212.323.3817  
E: kherold@corcoran.com

**Alisia Ramlochan**

LICENSED ASSOCIATE  
REAL ESTATE BROKER

P: 212.893.1450  
E: alisia.ramlochan@corcoran.com

**Cosmin Bitu**

LICENSED REAL ESTATE  
SALESPERSON

P: 917.602.5754  
E: cosmin.bitu@corcoran.com

FLOOR PLAN FOR ILLUSTRATIVE PURPOSES ONLY

SIZES AND DIMENSIONS ARE APPROXIMATE, ACTUAL MAY VARY.

Real estate agents affiliated with The Corcoran Group are independent contractors and are not employees of The Corcoran Group. Equal Housing Opportunity. The Corcoran Group is a licensed real estate broker located at 590 Madison Ave, NY, NY 10022. All information furnished regarding property for sale or rent or regarding financing is from sources deemed reliable, but Corcoran makes no warranty or representation as to the accuracy thereof. All property information is presented subject to errors, omissions, price changes, changed property conditions, and withdrawal of the property from the market, without notice.