

# BUILD TO SUIT

## FRUITVILLE BUSINESS PLAZA

Sarasota, FL



### Property Description

Ideally located at the SE quadrant of I-75 and Fruitville Road, Sarasota

Up to 32,000 sf Office/ Medical Office/ Retail

Offsite stormwater – water/ sewer stubbed to the site

### SUMMARY

Vacant Land	3 acres
Zoning	Multiple Uses
Build to Suit	32,000 SF
Ground Lease	

**Brian Kennelly**  
941-378-1740 ext. 114  
bk@starling-group.com  
starling-group.com

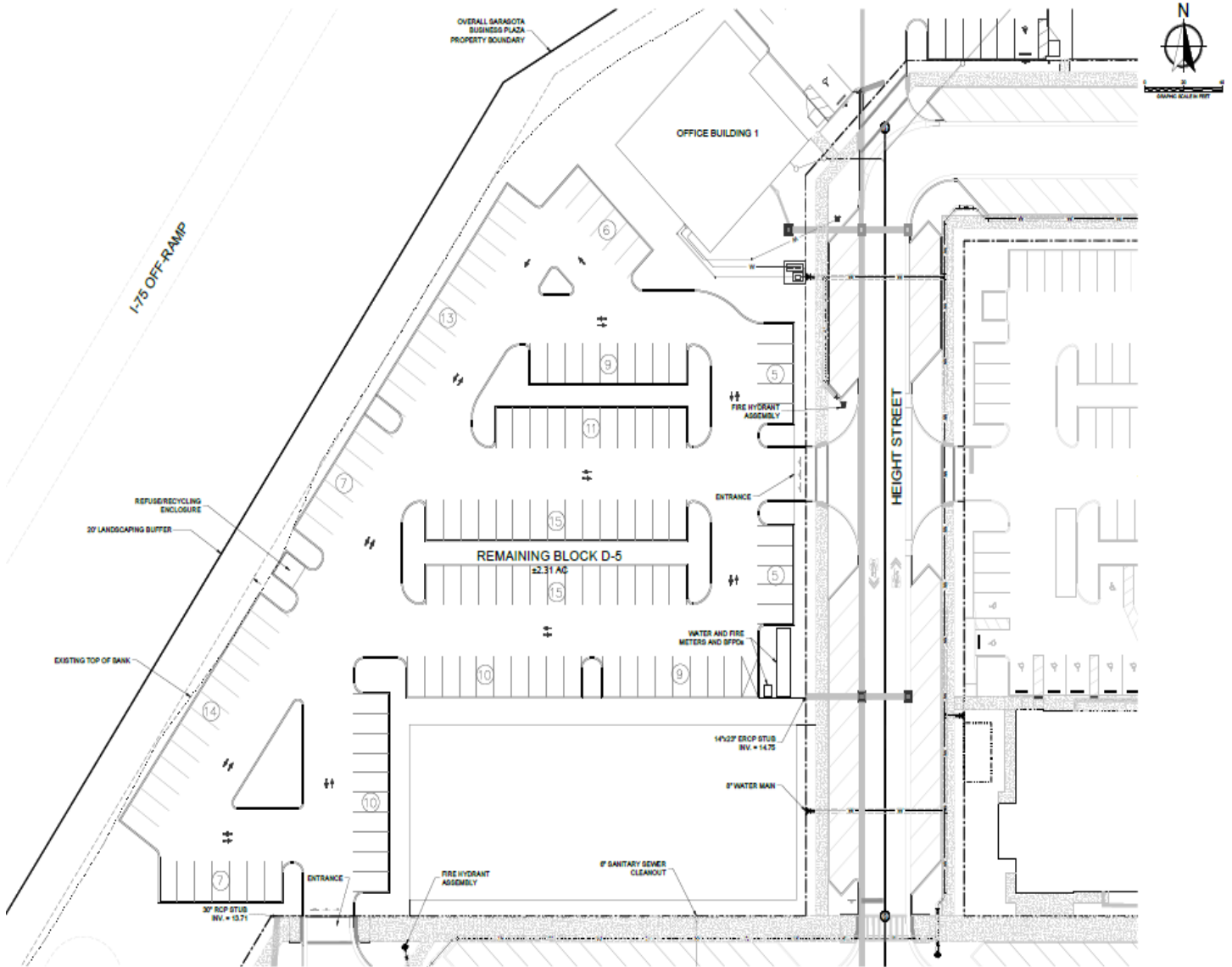
DEVELOPMENT | CONSTRUCTION | PROPERTY MANAGEMENT



# BUILD TO SUIT

## FRUITVILLE BUSINESS PLAZA

Sarasota, FL



Test fit site plan – 2 story – 32,000 sf

**Brian Kennelly**  
941-378-1740 ext. 114  
bk@starling-group.com  
starling-group.com

DEVELOPMENT | CONSTRUCTION | PROPERTY MANAGEMENT

