

# PENTHOUSE BOUTIQUE OFFICE SPACE FOR LEASE ON MAIN STREET



2654 MAIN ST. SUITE E  
SANTA MONICA, CA 90405



COMMERCIAL  
ASSET GROUP



- AVAILABLE DECEMBER 1, 2024
- BEAUTIFUL OFFICE SPACE WITH EXCELLENT NATURAL LIGHT
- PRIVATE OUTDOOR DECK
- LOCATED IN THE HEART OF MAIN STREET SHOPPING, DINING AND ENTERTAINMENT
- ONE RESERVED PARKING SPACE AS WELL AS ADJACENT CITY LOTS



**SIZE**  
2ND FLOOR: ±767 SF

**RATE**  
\$4.75 PSF, MG

**AVAILABLE**  
IMMEDIATELY

These materials are based on information and content provided by others, which we believe are accurate. No guarantee, warranty or representation is made by Commercial Asset Group, Inc. or its personnel. All interested parties must independently verify accuracy and completeness. As well, any projections, assumptions, opinion, or estimates are used for example only and do not represent the current or future performance of the identified property. Your tax, financial, legal and toxic substance advisors should conduct a careful investigation of the property and its suitability for your needs, including land use limitations. The property is subject to prior lease, sale, change in price, or withdrawal from the market without notice.



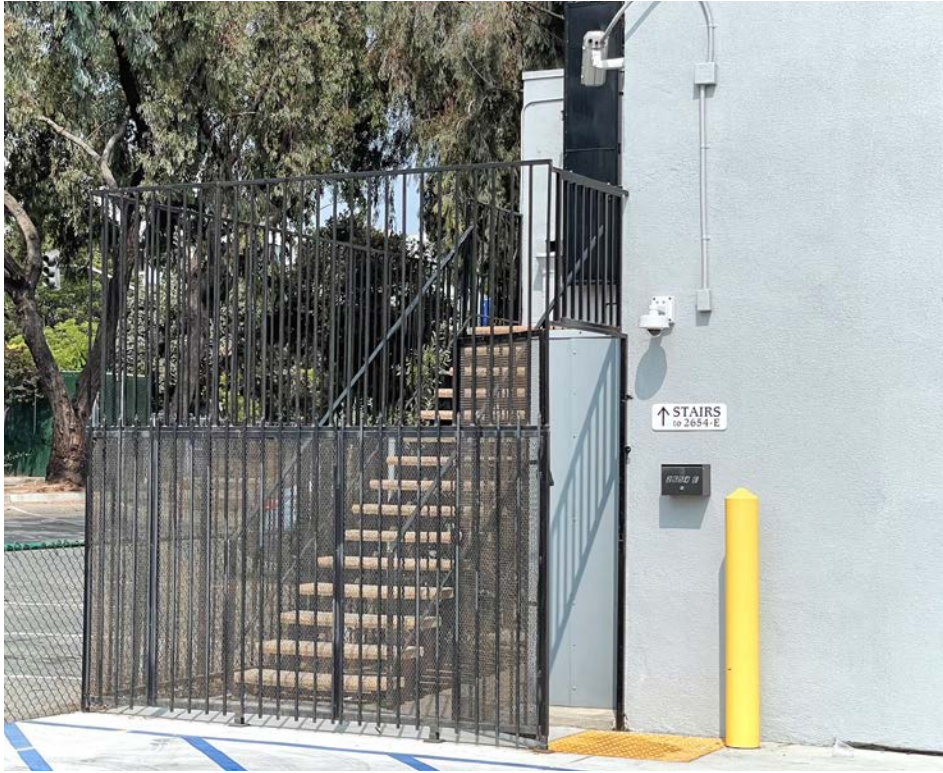
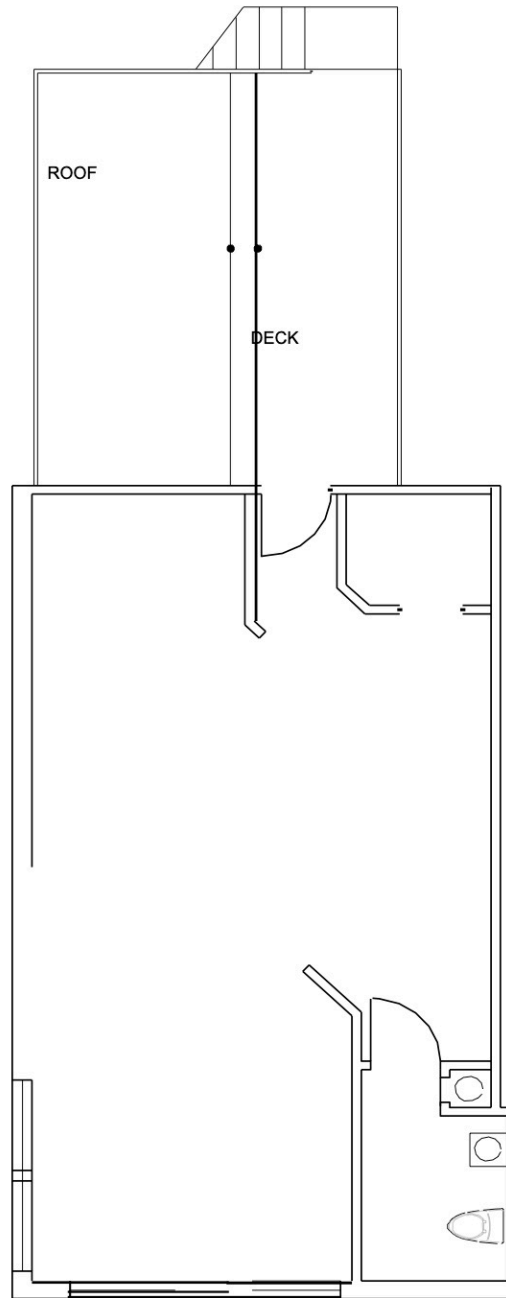


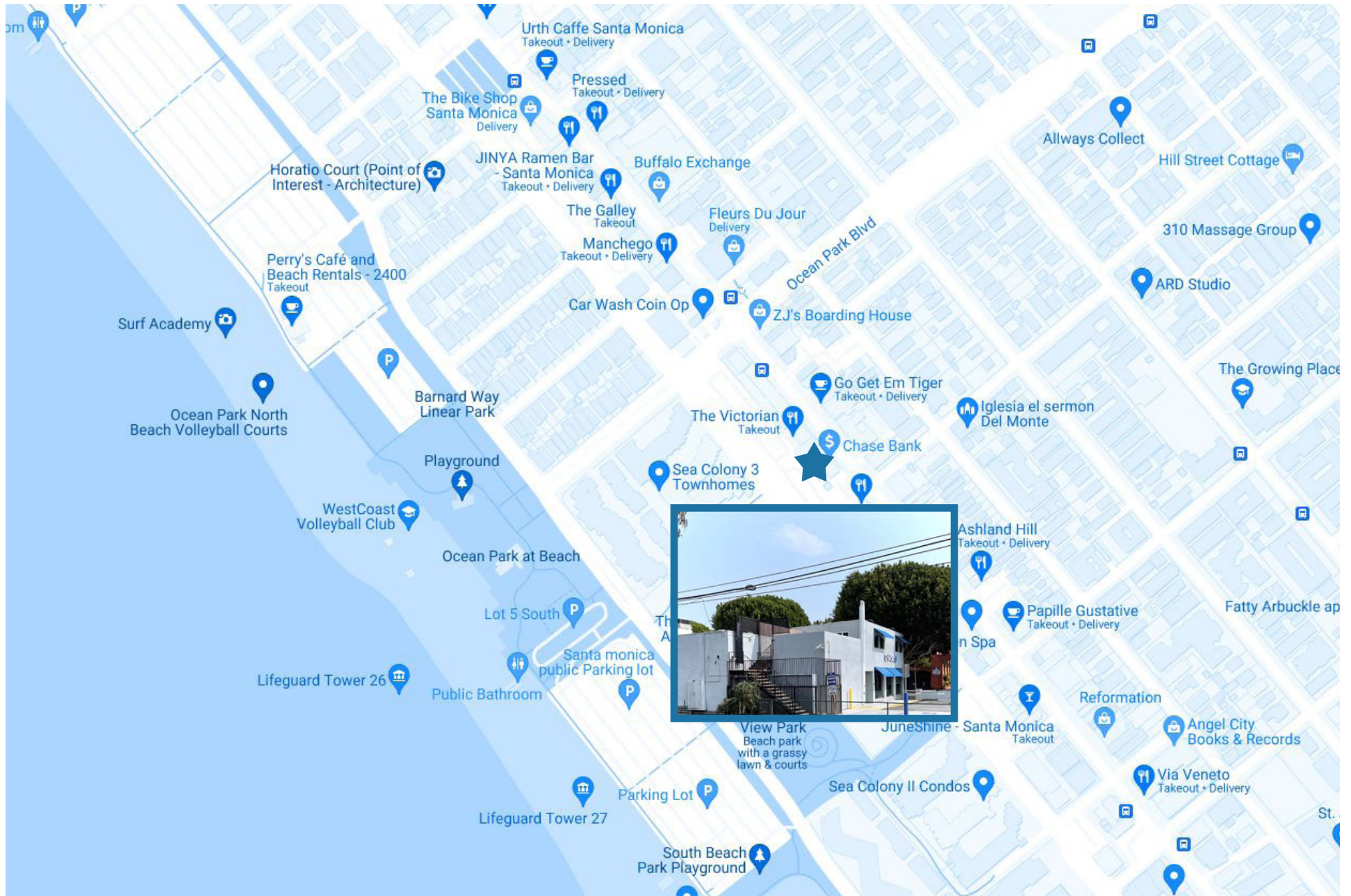
Exhibit A



2654 E SECOND FLOOR

FLOOR PLAN





AREA MAP





**COMMERCIAL  
ASSET GROUP**

**DAVID ICKOVICS**

PRINCIPAL  
P 310.272.7380  
E [DJI@CAGRE.COM](mailto:DJI@CAGRE.COM)  
LIC. 01315424

**TIFFANY LOTZ**

DIRECTOR  
P 310.272.7385  
E [TIFFANY@CAGRE.COM](mailto:TIFFANY@CAGRE.COM)  
LIC. 01879870

**DAVID ASCHKENASY**

EXECUTIVE VICE PRESIDENT  
P 310.272.7381  
E [DAVIDA@CAGRE.COM](mailto:DAVIDA@CAGRE.COM)  
LIC. 01714442

**COMMERCIAL ASSET GROUP**

1801 CENTURY PARK EAST, STE 1550  
LOS ANGELES, CA 90067  
P 310.275.8222 F 310.275.8223  
[WWW.CAGRE.COM](http://WWW.CAGRE.COM) LIC. 01876070