



EXECUTIVE SUMMARY
2778 W THARPE ST
 TALLAHASSEE, FL 32303



OFFERING SUMMARY

Available SF:	6,000 SF
Lease Rate:	\$12 SF/yr (MG)
Lot Size:	11.45 Acres
Year Built:	1983
Building Size:	6,000 SF
Zoning:	M-1
APN:	2120204210000

PROPERTY OVERVIEW

Offered for Lease
 \$12.00 PSF/YR (MG)
 16 Eves
 2 Dock Height Roll-Up Doors
 6,000 SF

LOCATION OVERVIEW

Located on W Tharpe St, just west of the Mission Rd intersection. Surrounded by industrial and service users with a mix of residential. The property is fenced with security cameras and 24-hour gate access controls.

[Click Here for Zoning Information](#)

Lewis Buford
 850.591.6363
 lewis@tlgproperty.com

TLG REAL ESTATE SERVICES
 3520 Thomasville Road, Suite 200, Tallahassee, FL 32309
 850.385.6363





ADDITIONAL PHOTOS
2778 W THARPE ST
TALLAHASSEE, FL 32303



Lewis Buford
850.591.6363
lewis@tlgproperty.com

TLG REAL ESTATE SERVICES
3520 Thomasville Road, Suite 200, Tallahassee, FL 32309
850.385.6363





RETAILER MAP
2778 W THARPE ST
TALLAHASSEE, FL 32303



Lewis Buford
850.591.6363
lewis@tlgproperty.com

TLG REAL ESTATE SERVICES
3520 Thomasville Road, Suite 200, Tallahassee, FL 32309
850.385.6363

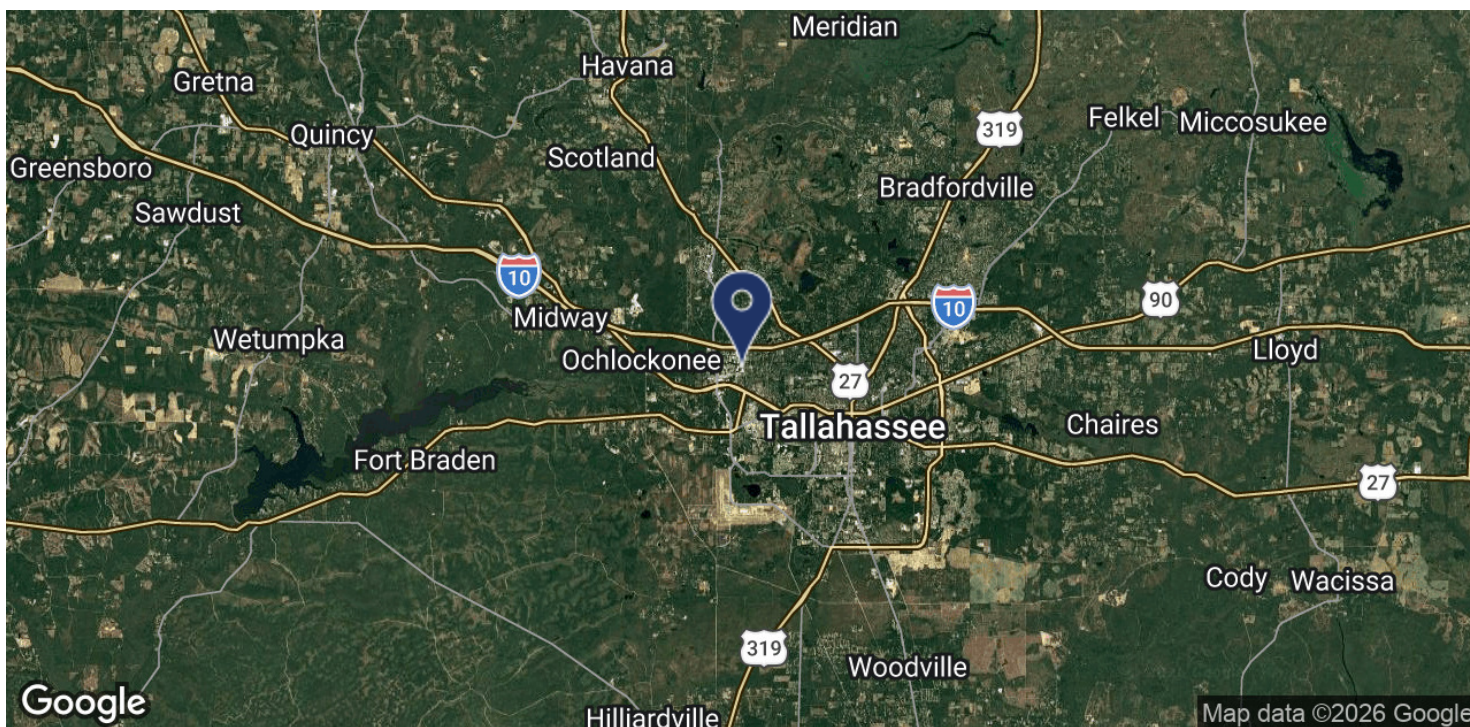
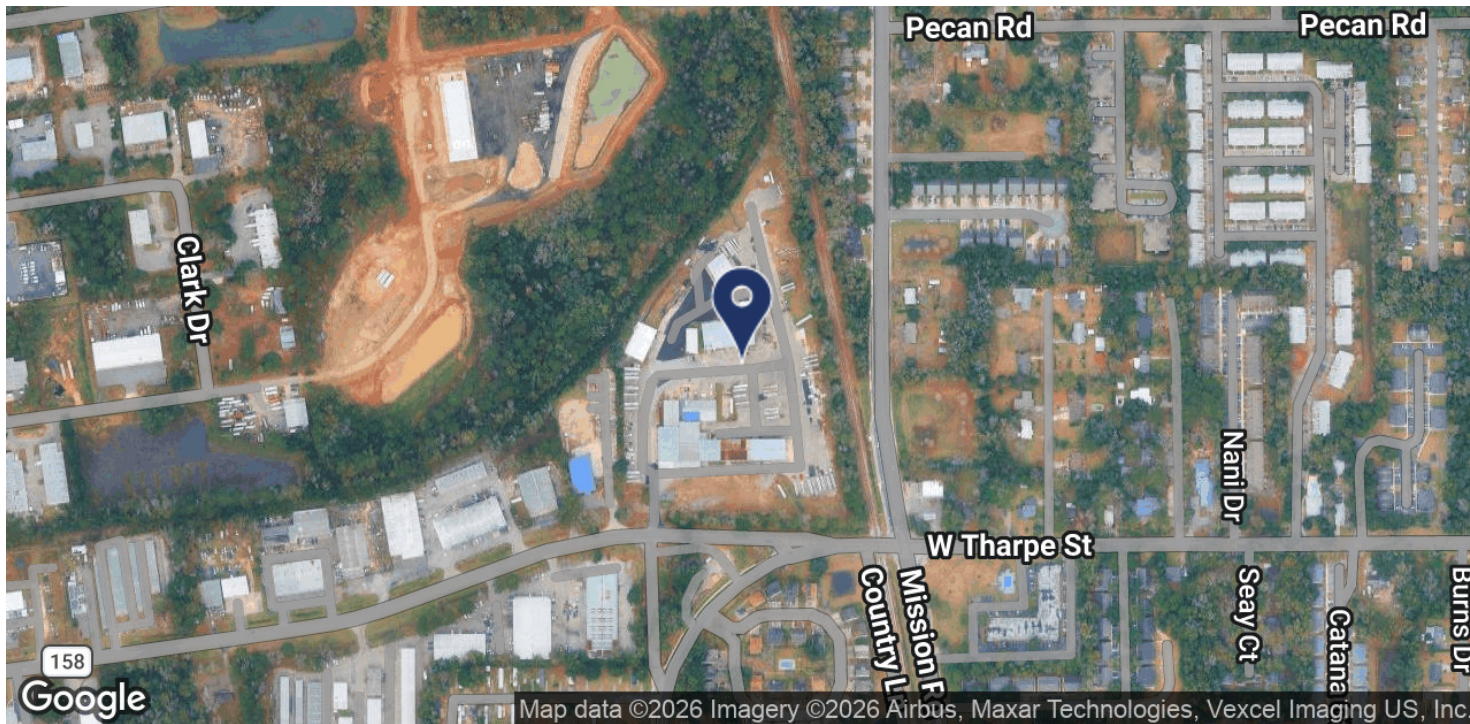




LOCATION MAP

2778 W THARPE ST

TALLAHASSEE, FL 32303



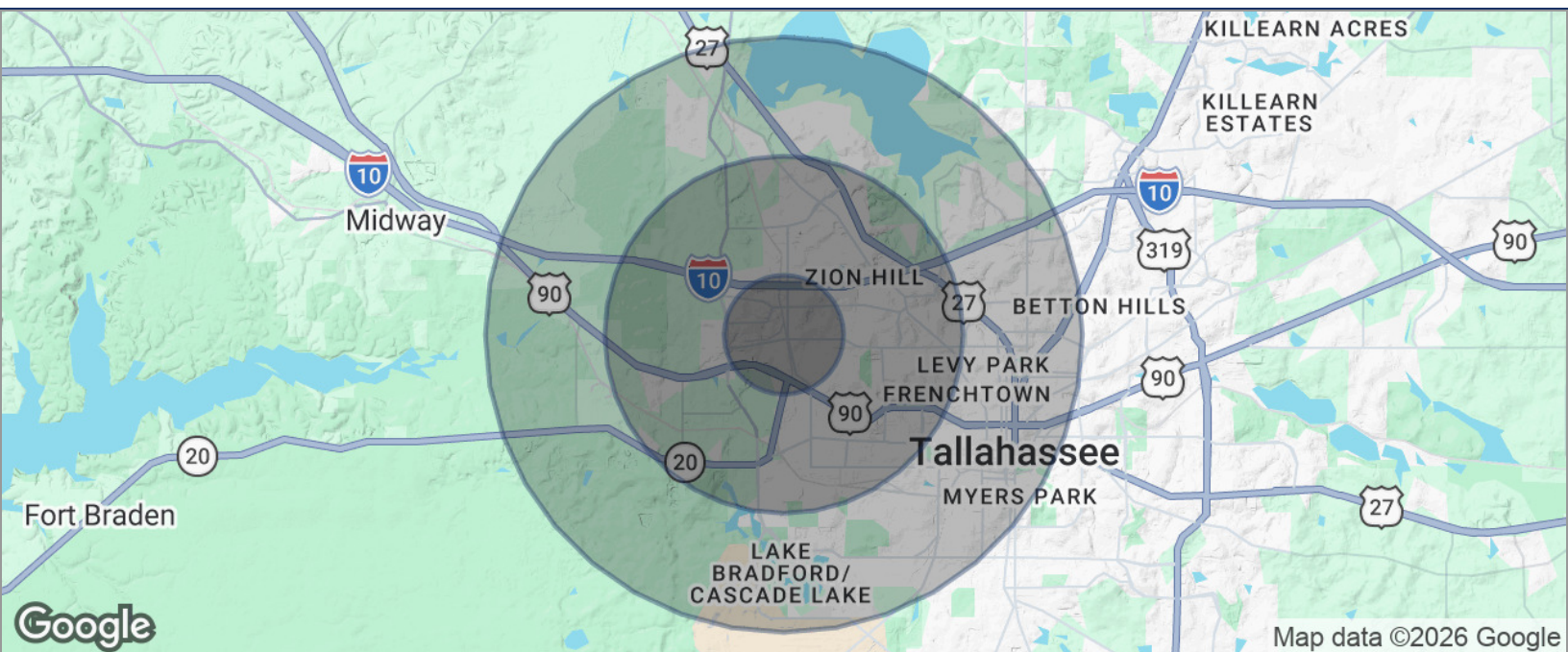
Lewis Buford
850.591.6363
lewis@tlgproperty.com

TLG REAL ESTATE SERVICES
3520 Thomasville Road, Suite 200, Tallahassee, FL 32309
850.385.6363





DEMOGRAPHICS MAP
2778 W THARPE ST
 TALLAHASSEE, FL 32303



POPULATION	1 MILE	3 MILES	5 MILES
TOTAL POPULATION	8,550	64,608	127,464
MEDIAN AGE	28.2	28.4	29.6
MEDIAN AGE (MALE)	29.0	28.3	29.9
MEDIAN AGE (FEMALE)	25.6	28.4	30.0
HOUSEHOLDS & INCOME	1 MILE	3 MILES	5 MILES
TOTAL HOUSEHOLDS	3,832	27,977	51,213
# OF PERSONS PER HH	2.2	2.3	2.5
AVERAGE HH INCOME	\$53,570	\$56,864	\$67,956
AVERAGE HOUSE VALUE	\$211,216	\$187,490	\$225,471

* Demographic data derived from 2020 ACS - US Census

Lewis Buford
 850.591.6363
 lewis@tlgproperty.com

TLG REAL ESTATE SERVICES
 3520 Thomasville Road, Suite 200, Tallahassee, FL 32309
 850.385.6363

