

28010 Industry Dr

Valencia, CA 91355

For Sublease 16,101 SF



Property Highlights

- High Image, Freestanding Building
- Ample Parking
- Dock High and Grade Level Loading
- State-of-the-Art ESFR Sprinkler System
- High End Office Build Out with Abundant Natural Light
- Potential for Long Term Direct Lease

Property Overview



Loading Dock Well

16,101
Available SF

4,739
Office SF

1,806
Mezzanine SF

\$1.10
NNN
Lease Rate

±\$0.28
NNN
Expenses

1
(12'x14')
Truck High
Positions

3
2 (12'x14')
1 (8'x9')
Ground Level
Doors

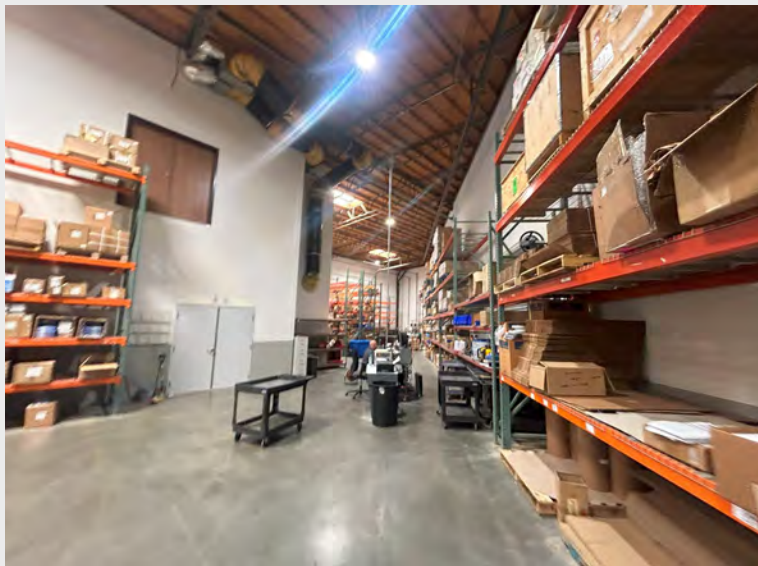
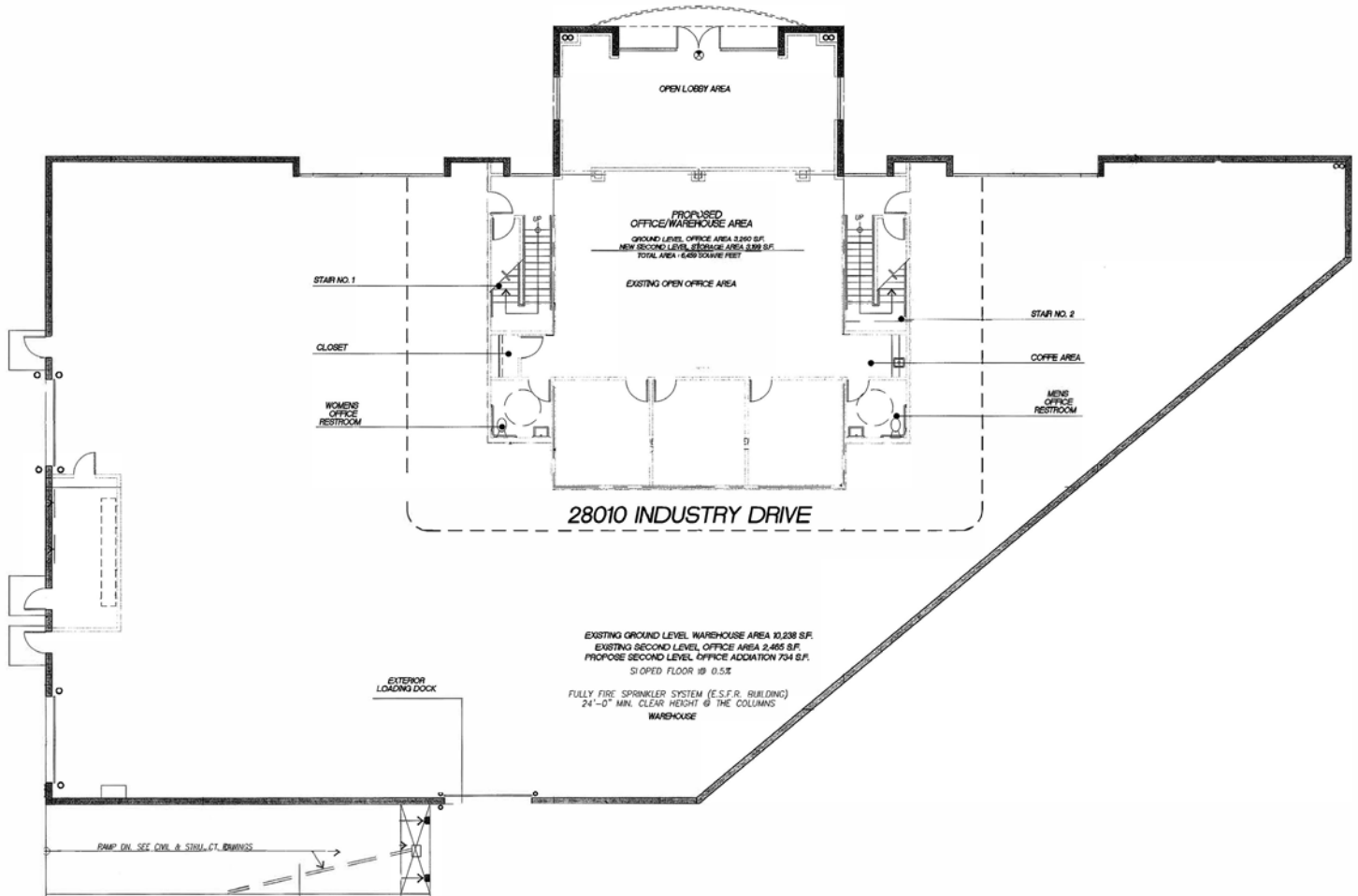
200 A;
277/480 V
3p 4w
Power

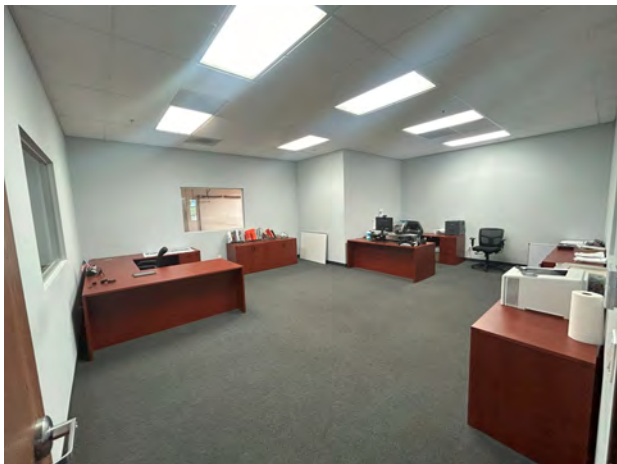
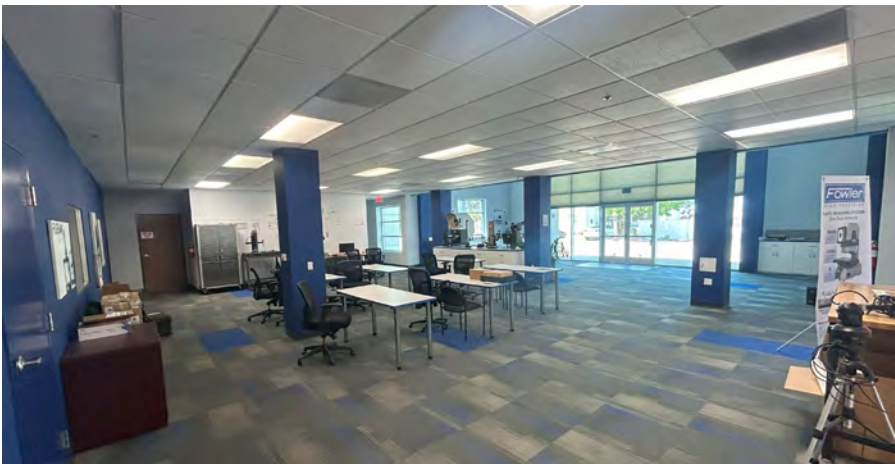
24'
Min
Clearance
Height

2
Restrooms

36
Parking
Spaces

Floor Plan





Amenities Map

EATERIES

- | | | | |
|----|---------------------------|----|----------------------------|
| 1 | Baja Fresh | 28 | Little Caesars |
| 2 | Big Chicken | 29 | McDonald's |
| 3 | BJ's Restaurants | 30 | Mimi's Cafe |
| 4 | Black Bear Diner | 31 | Olive Garden |
| 5 | Cafe Rio | 32 | Orange Julius |
| 6 | California Fish Grill | 33 | Original Tommy's |
| 7 | California Pizza Kitchen | 34 | Panda Express |
| 8 | Capriotti's Sandwich Shop | 35 | Panera Bread |
| 9 | Carl's Jr. | 36 | Papa John's |
| 10 | Chick-fil-A | 37 | Peet's Coffee and Tea |
| 11 | Chipotle Mexican Grill | 38 | Pizza Hut |
| 12 | Corner Bakery Cafe | 39 | Popeyes Louisiana Kitchen |
| 13 | Dairy Queen | 40 | Red Lobster |
| 14 | Del Taco | 41 | Red Robin Gourmet Burgers |
| 15 | Denny's | 42 | Sbarro |
| 16 | Domino's Pizza | 43 | Starbucks |
| 17 | Donatos Pizzeria | 44 | Stonefire Grill |
| 18 | Dunkin' Donuts | 45 | Subway |
| 19 | Firehouse Subs | 46 | Sushi Story |
| 20 | Five Guys | 47 | Taco Bell |
| 21 | Hot Dog on a Stick | 48 | Teriyaki Madness |
| 22 | IHOP | 49 | The Cheesecake Factory |
| 23 | In-N-Out Burger | 50 | The Coffee Bean & Tea Leaf |
| 24 | Jack in the Box | 51 | The Habit Burger Grill |
| 25 | Jersey Mike's | 52 | The Stand |
| 26 | Jimmy John's | 53 | Wendy's |
| 27 | Johnny Rockets | 54 | Wingstop |

LODGING

- Best Western
- Courtyard by Marriott
- Embassy Suites Hotels
- Hampton Inn
- Hilton Garden Inn
- Holiday Inn Express
- Homewood Suites by Hilton
- Hyatt Regency
- Residence Inn by Marriott
- SpringHill Suites by Marriott

FITNESS

- Anytime Fitness
- Club Pilates
- CrossFit
- Gold's Gym
- LA Fitness
- Orangetheory Fitness
- StretchLab
- YMCA

ENTERTAINMENT

- Fun Factory
- Six Flags

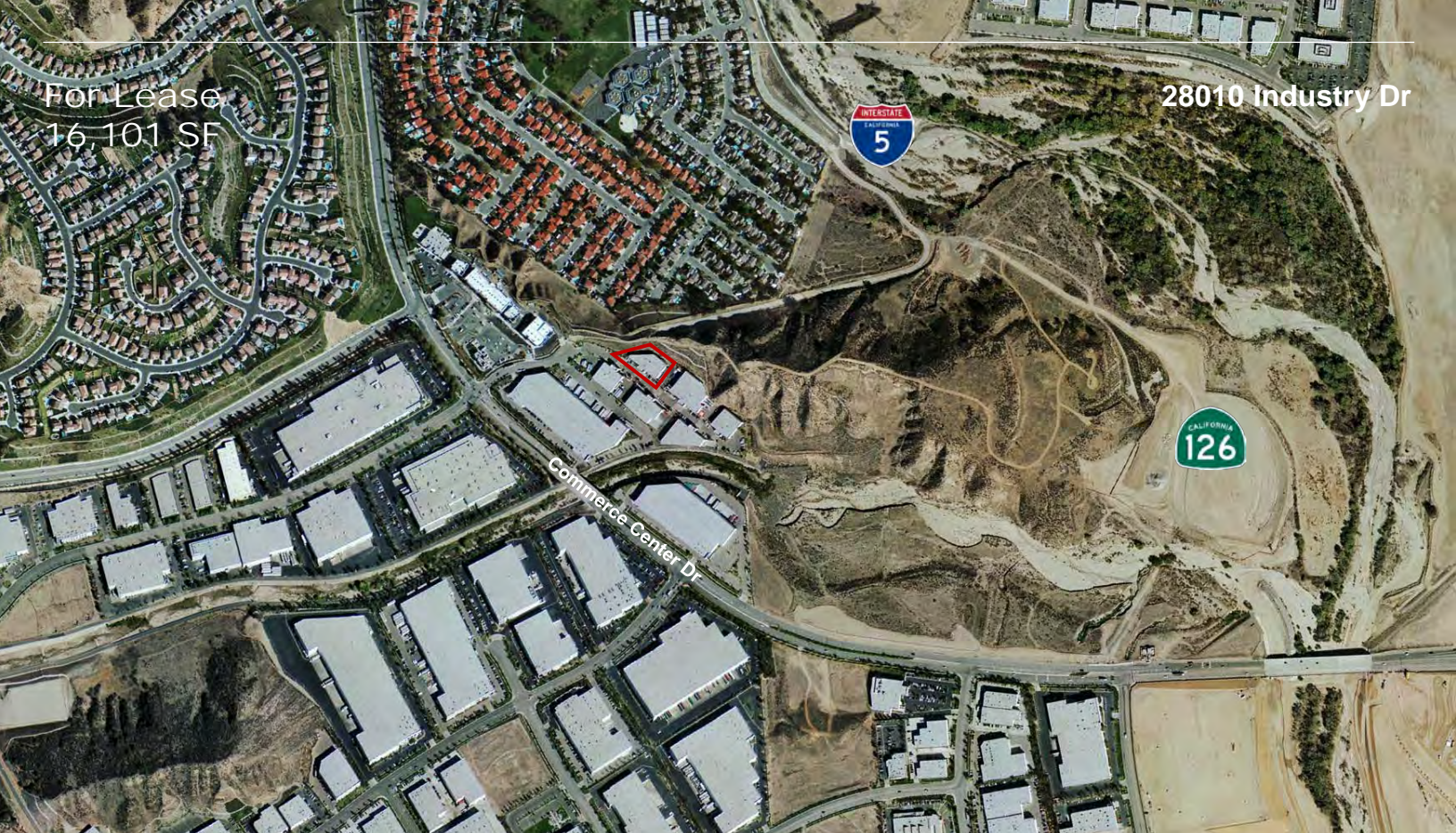
SHOPPING

- | | | | | | |
|----|---------------------------|----|------------------|----|--------------------------|
| 1 | American Eagle Outfitters | 17 | Home Depot | 33 | Sprouts Farmers Market |
| 2 | Anthropologie | 18 | HomeGoods | 34 | T.J. Maxx |
| 3 | Apple Retail Store | 19 | JCPenney | 35 | Target |
| 4 | BareMinerals | 20 | Kohl's | 36 | The Men's Wearhouse |
| 5 | Barnes and Noble | 21 | Lowe's | 37 | Tilly's |
| 6 | Bath & Body Works | 22 | Lululemon | 38 | Trader Joe's |
| 7 | Best Buy | 23 | Macy's | 39 | ULTA Beauty |
| 8 | Claire's | 24 | Macy's Backstage | 40 | Urban Outfitters |
| 9 | Cotton On | 25 | Nordstrom Rack | 41 | Vans |
| 10 | Dollar Tree | 26 | On Running | 42 | Victoria's Secret |
| 11 | Five Below | 27 | Pottery Barn | 43 | Vons |
| 12 | Foot Locker | 28 | Ralphs | 44 | Walmart USA |
| 13 | Forever 21 | 29 | Ross Stores | 45 | White House Black Market |
| 14 | Free People | 30 | Sephora | 46 | Whole Foods Market |
| 15 | H&M | 31 | SKECHERS | | |
| 16 | Hollister | 32 | Smart & Final | | |



For Lease
16,101 SF

28010 Industry Dr



28010 Industry Dr, Valencia, CA 91355

Sam Glendon, SIOR
Senior Vice President
+1 818 502 6745
sam.glendon@cbre.com
Lic. 01826689

Nicholas Casasante
Associate
+1 818 907 4737
nicholas.casasante@cbre.com
Lic. 02246788

© 2025 CBRE, Inc. All rights reserved. This information has been obtained from sources believed reliable but has not been verified for accuracy or completeness. CBRE, Inc. makes no guarantee, representation or warranty and accepts no responsibility or liability as to the accuracy, completeness, or reliability of the information contained herein. You should conduct a careful, independent investigation of the property and verify all information. Any reliance on this information is solely at your own risk. CBRE and the CBRE logo are service marks of CBRE, Inc. All other marks displayed on this document are the property of their respective owners, and the use of such marks does not imply any affiliation with or endorsement of CBRE. Photos herein are the property of their respective owners. Use of these images without the express written consent of the owner is prohibited.

