

SWC STERNS RD. & S. DIXIE HWY.
ERIE, MI 48133

VACANT INDUSTRIAL LAND FOR SALE
143.25 Acres Available



**SIGNATURE
ASSOCIATES**
KNOW SIGNATURE | KNOW RESULTS

FULL-SERVICE COMMERCIAL REAL ESTATE

LARGE SCALE IND. DEVELOPMENT

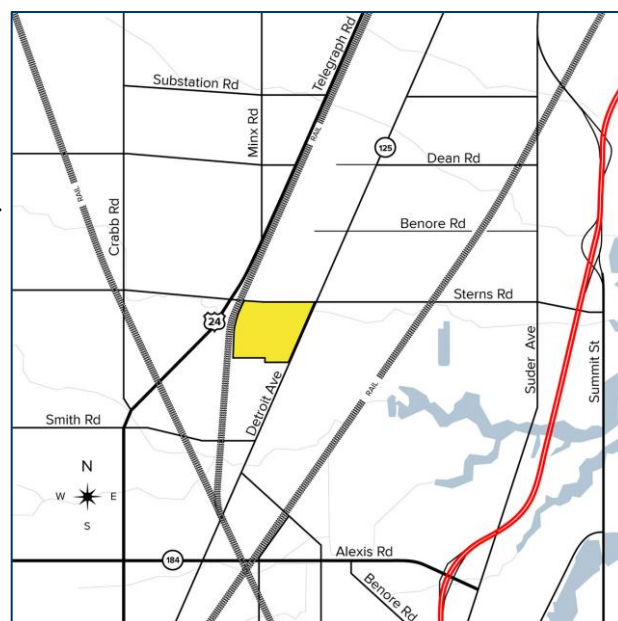


**VIEW
VIDEO TOUR**



GENERAL INFORMATION

Sale Price:	\$4,297,500 (\$30,000 per acre)
Acreage:	143.25 AC
Closest Cross Street:	US 24\Telegraph Rd.\M-125 Dixie Hwy.
County:	Monroe
Township:	Bedford Erie
Zoning:	I-1 & I-3
Easements:	Of record
Topography:	Flat
Rail:	Yes - CSX



For more information, please contact:

KEENAN FIELDS, SIOR
(419) 290 8334 or (419) 249 6311
kfields@signatureassociates.com

ROB KELEGHAN, SIOR
(419) 680 7663 or (419) 249 6323
rkeleghan@signatureassociates.com

SIGNATURE ASSOCIATES
7150 Granite Circle, Suite 200
Toledo, Ohio 43617
www.signatureassociates.com

SWC Sterns Rd. & Dixie Hwy., Erie, MI 48133

Vacant Industrial Land For Sale

143.25
Acres
AVAILABLE

PROPERTY DESCRIPTION

Environmental Report:	No
Drainage:	Good Hooper Run Ditch
Improvements:	None
Restrictions:	Per zoning
Sign on Property:	Yes
Adjacent Land	
North:	Industrial (I-1), solar field
South:	Industrial (I-1), Republic services HQ
East:	Agricultural (AC) + Residential Dixie Highway
West:	Industrial (I-3) CSX rail

UTILITIES

Electric:	Yes
Gas:	Yes
Water:	Yes
Sanitary:	Yes – per extension agreement
Rail:	Yes
Fiber Service:	Yes

2021 REAL ESTATE TAXES

	TD	PARCEL NUMBER	SUMMER TAXES	WINTER TAXES	TOTAL TAXES
53 AC – Bedford Twp.	02	036-001-00	\$723.30	\$1,149.22	\$1,872.52
87.42 AC – Erie Twp.	05	031-004-00	\$1,362.87	\$2,047.26	\$3,410.13

STRATEGIC PARTNERS

Click on the interactive links below to visit each website:



Detroit
Regional
Partnership



**SIGNATURE
ASSOCIATES**
KNOW SIGNATURE | KNOW RESULTS

Comments:

- Vacant industrial land ready for development in southeastern Michigan. Large tract located in a business-friendly community just 1 mile north of the Ohio/Michigan line. 40 miles south of Detroit.
- Easy access to I-75 and US-23. Close proximity to I-80/90 (Ohio Turnpike).
- CSX rail class 1, rail spur could be feasibly constructed.
- Possible development incentives available from state and local agencies.
- For full access to the Tier-3 Due Diligence Report, click the link: [LAC Site | VIP by DRP](#)

For more information, please contact:

KEENAN FIELDS, SIOR
(419) 290 8334 or (419) 249 6311
kfields@signatureassociates.com

ROB KELEGHAN, SIOR
(419) 680 7663 or (419) 249 6323
rkeleghan@signatureassociates.com

SIGNATURE ASSOCIATES
7150 Granite Circle, Suite 200
Toledo, Ohio 43617
www.signatureassociates.com

SWC Sterns Rd. & Dixie Hwy., Erie, MI 48133

Vacant Industrial Land For Sale

143.25
Acres
AVAILABLE

SITE UTILITY INFORMATION

WATER - PROVIDER: SOUTH COUNTY WATER SYSTEM

Location of Line	Along Dixie Highway
Size of Line (inches)	20" Dixie Hwy.\16" Sterns Rd.
Assumed Demand	Up to 150,000 GPD

SANITARY SEWER – MONROE COUNTY DRAIN COMMISSION/BEDFORD TWP.

Location of Line	½ mile south of site, west side of South Dixie Hwy
Size of Line (inches)	12"
Erie Extension A – agreement	Bedford & Erie Twp., sewer extension agreement on file.

ELECTRIC - PROVIDER: CONSUMERS ENERGY

Location of Line – Primary	Adjacent to site/west side of Dixie Hwy.
Distribution line	7.2/12.47 kV system
Capacity of Line	3.0 MW capacity
Assumed Demand Baseline Per Site Size	10 MW
Distance to Substation	46 kV north side of Sterns Rd.

NATURAL GAS - PROVIDER: MICHIGAN GAS UTILITIES

Location of Line	At site/Sterns and Dixie Hwy.
Size of Line	4" medium pressure
Assumed Demand/Baseline Per Site Size	10,000 MCF/month or 14 MCFH

FIBER INTERNET – PROVIDER: SPECTRUM

Location Line	Dixie Hwy. – Aerial Coaxial Cable/940 Mbps download 35 Mbps upload Sterns Rd. – not currently served.
---------------	--

For more information, please contact:

KEENAN FIELDS, SIOR
(419) 290 8334 or (419) 249 6311
kfields@signatureassociates.com

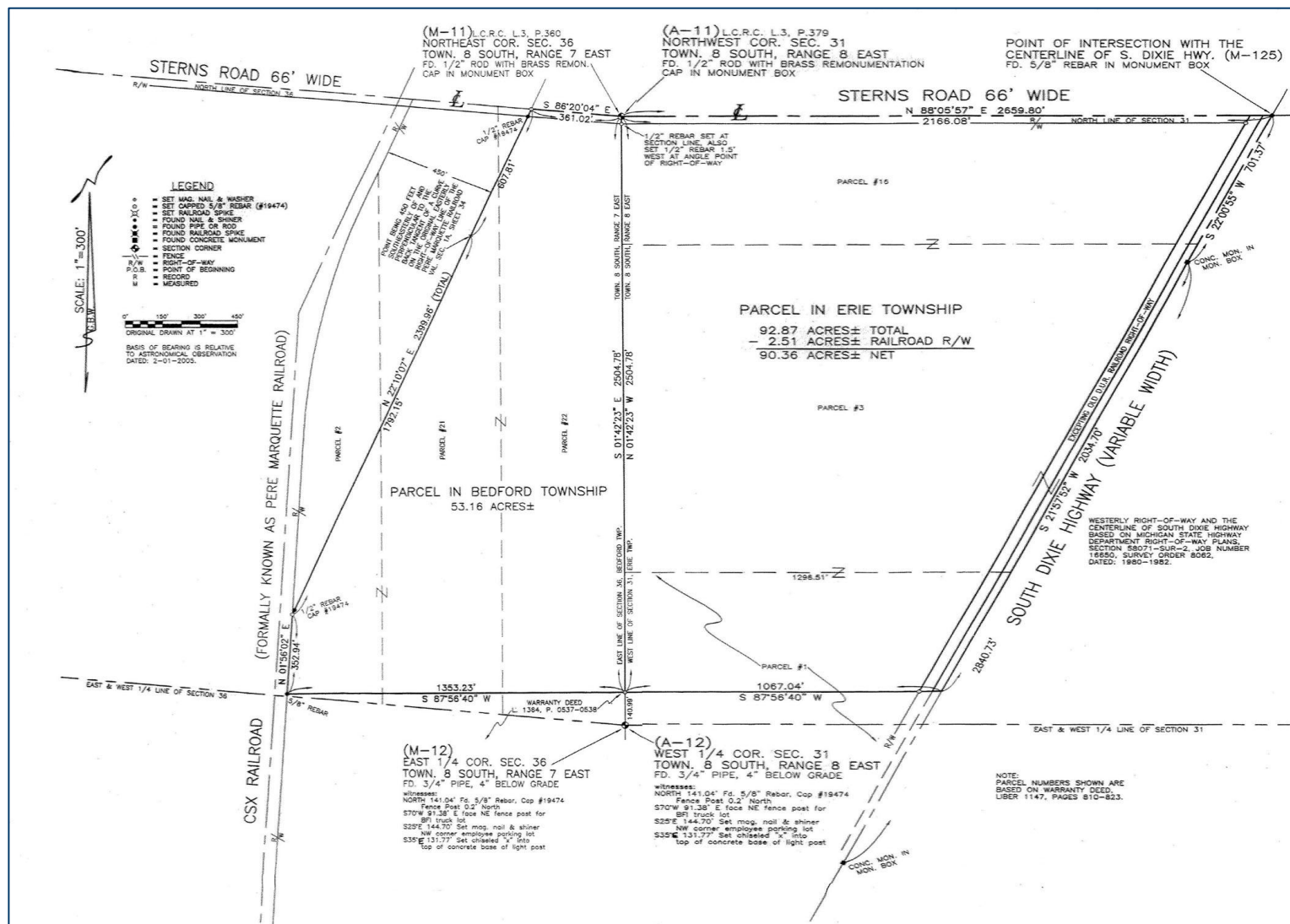
ROB KELEGHAN, SIOR
(419) 680 7663 or (419) 249 6323
rkeleghan@signatureassociates.com

SIGNATURE ASSOCIATES
7150 Granite Circle, Suite 200
Toledo, Ohio 43617
www.signatureassociates.com

0 Sterns Rd & Dixie Hwy, Erie, MI 48133

Vacant Industrial Land For Sale

143.25
Acres
AVAILABLE



For more information, please contact:

KEENAN FIELDS, SIOR
(419) 290 8334 or (419) 249 6311
kfields@signatureassociates.com

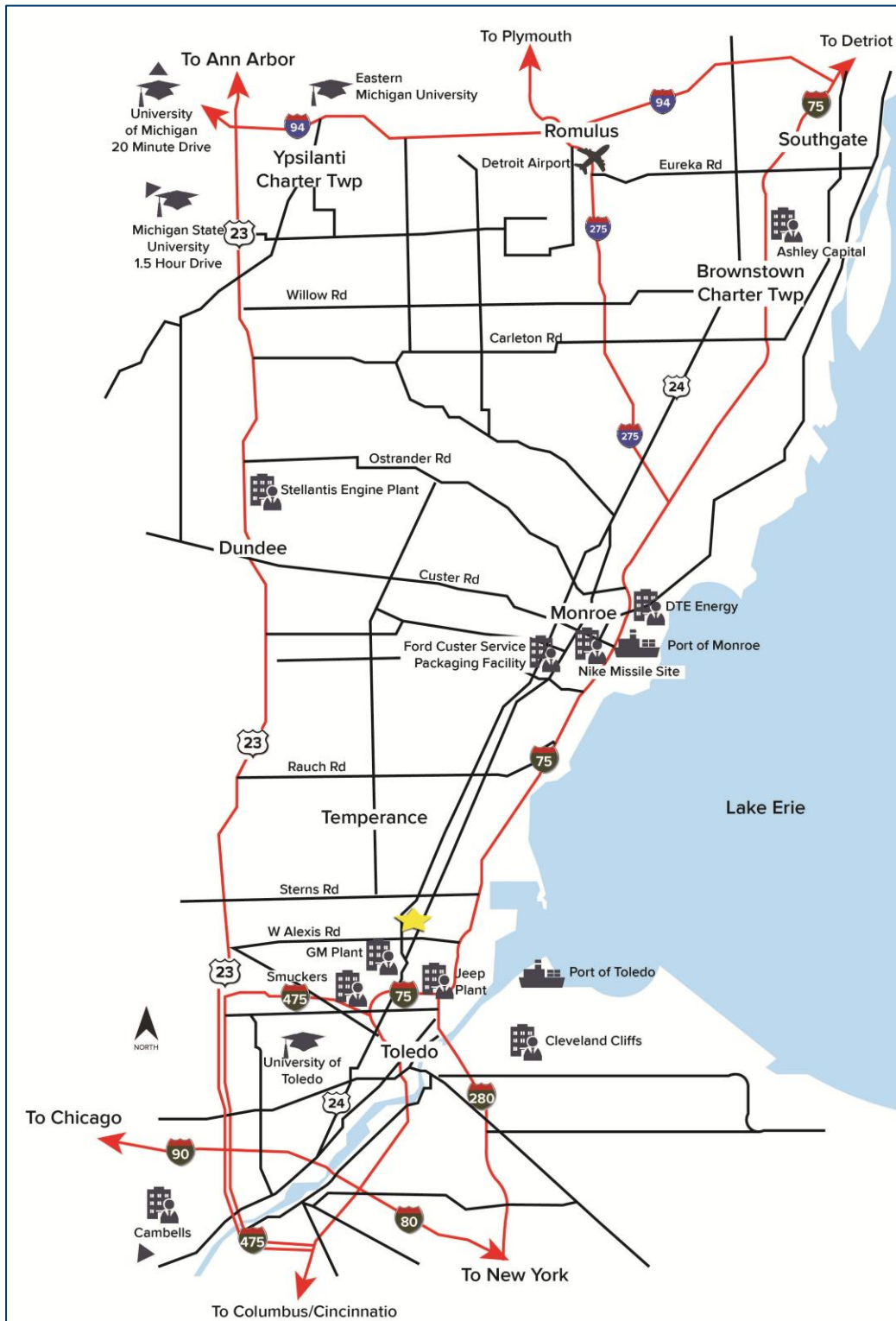
ROB KELEGHAN, SIOR
(419) 680 7663 or (419) 249 6323
rkeleghan@signatureassociates.com

SIGNATURE ASSOCIATES
7150 Granite Circle, Suite 200
Toledo, Ohio 43617
www.signatureassociates.com

0 Sterns Rd & Dixie Hwy, Erie, MI 48133

Vacant Industrial Land For Sale

143.25
Acres
AVAILABLE



For more information, please contact:

KEENAN FIELDS, SIOR
(419) 290 8334 or (419) 249 6311
kfields@signatureassociates.com

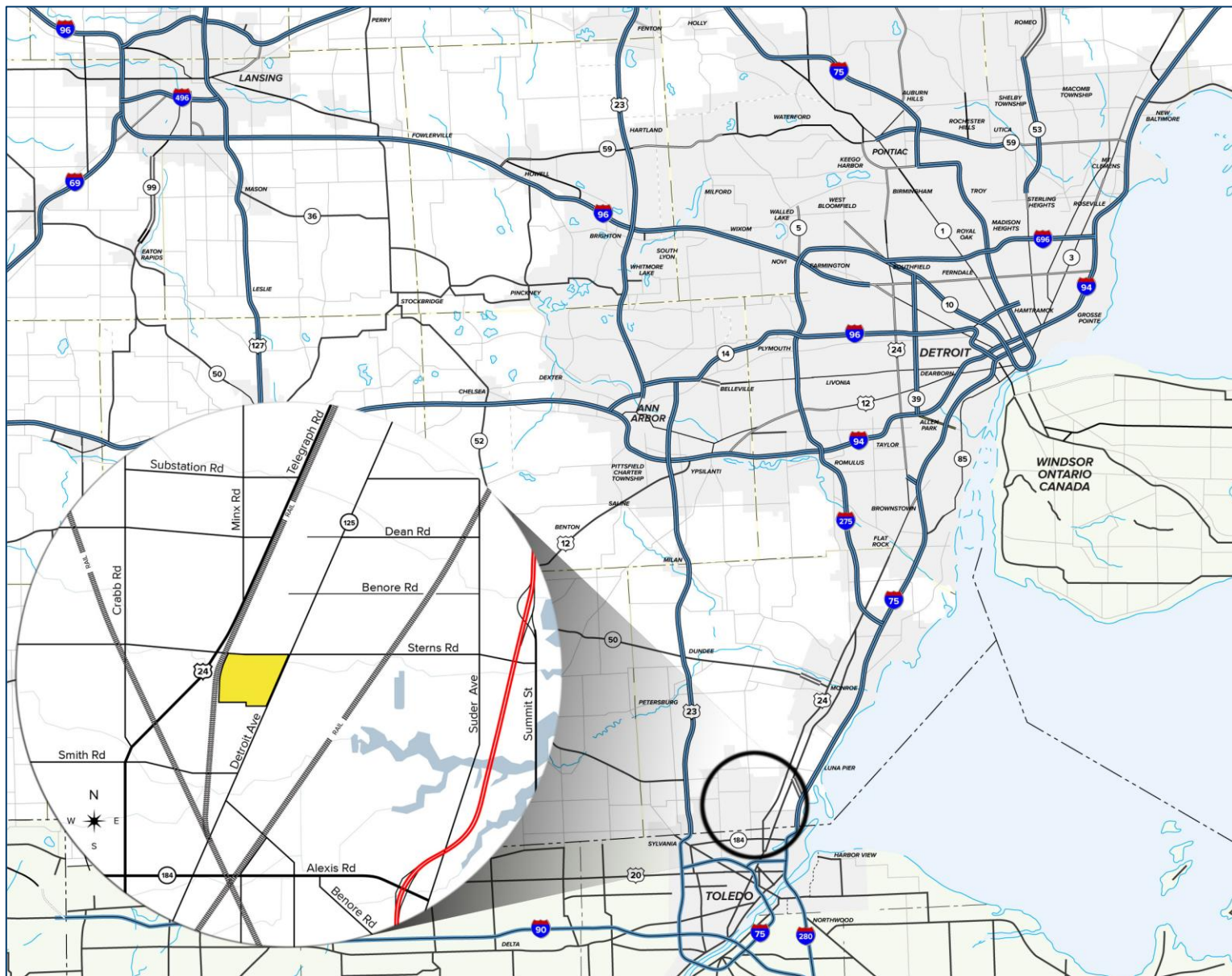
ROB KELEGHAN, SIOR
(419) 680 7663 or (419) 249 6323
rkeleghan@signatureassociates.com

SIGNATURE ASSOCIATES
7150 Granite Circle, Suite 200
Toledo, Ohio 43617
www.signatureassociates.com

Information is subject to verification and no liability for errors or omissions is assumed. Price is subject to change and listing withdrawal.

Vacant Industrial Land For Sale

143.25
Acres
AVAILABLE



KEENAN FIELDS, SIOR
(419) 290 8334 or (419) 249 6311
kfields@signatureassociates.com

ROB KELEGHAN, SIOR
(419) 680 7663 or (419) 249 6323
rkeleghan@signatureassociates.com

SIGNATURE ASSOCIATES
7150 Granite Circle, Suite 200
Toledo, Ohio 43617
www.signatureassociates.com

Information is subject to verification and no liability for errors or omissions is assumed. Price is subject to change and listing withdrawal.

0 Sterns Rd & Dixie Hwy, Erie, MI 48133

Vacant Industrial Land For Sale

143.25
Acres
AVAILABLE



For more information, please contact:

KEENAN FIELDS, SIOR
(419) 290 8334 or (419) 249 6311
kfields@signatureassociates.com

ROB KELEGHAN, SIOR
(419) 680 7663 or (419) 249 6323
rkeleghan@signatureassociates.com

SIGNATURE ASSOCIATES
7150 Granite Circle, Suite 200
Toledo, Ohio 43617
www.signatureassociates.com

Information is subject to verification and no liability for errors or omissions is assumed. Price is subject to change and listing withdrawal.