

LEASE

OFFICE



7303 - 7315 QUALITY CIRCLE



7303 - 7315 QUALITY CIRCLE, ANDERSON, IN 46013

PROPERTY OVERVIEW

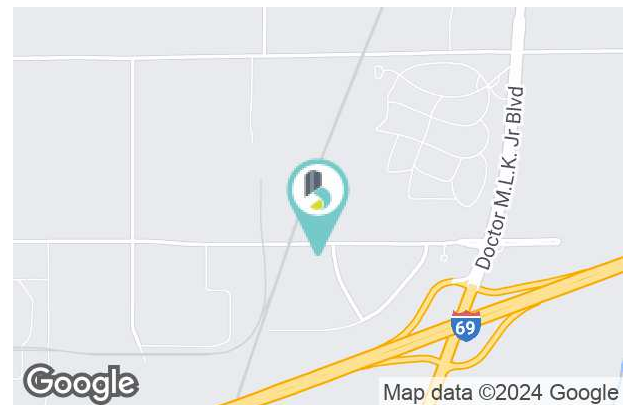
Located within the Flagship Office Park, the Quality Circle building has 3 separate suites, offering a variety of office space options. Flagship is a Certified Technology Park with Foreign Trade Zone status and provides users with immediate access to I-69.

PROPERTY HIGHLIGHTS

- Certified Technology Park
- Immediate Access to I-69
- Abundant Parking - 11.47 spaces per 1,000 SF
- Available Spaces
 - Suite 7315 - 2,904 SF
 - Suite 7307 - 3,561 SF
 - Suite 7303 - 4,746 SF

LEASE RATE

\$12.50 SF/YR (NNN)



BRADLEY COMPANY

310 E. 96th St., Suite 100
Indianapolis, IN 46240
317.663.6000

KIM HARTMAN, CPM

Senior Vice President
317.716.5895
khartman@bradleyco.com

TOM OSBORNE, SIOR

Principal
317.258.0179
tosborne@bradleyco.com



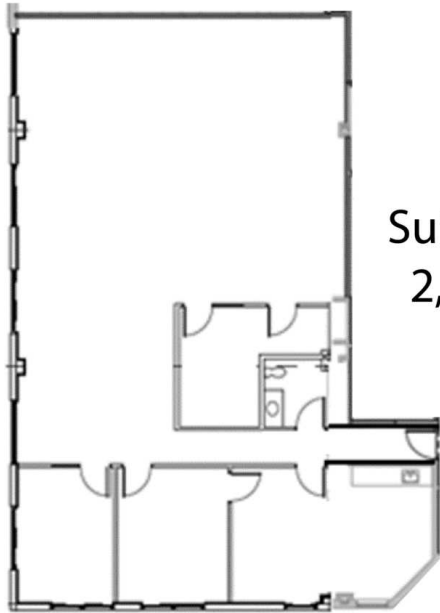
BRADLEYCO.COM



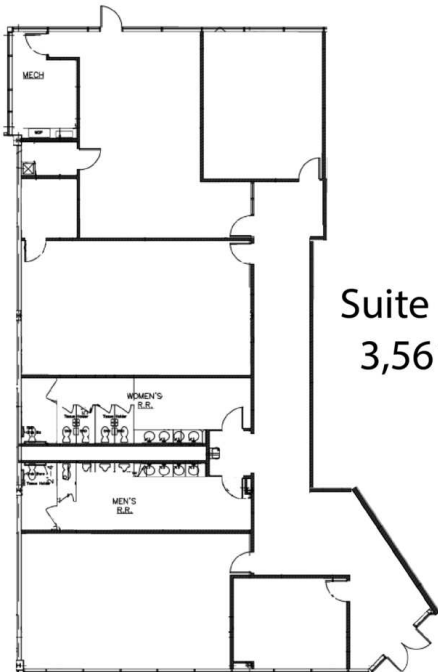
7303 - 7315 QUALITY CIRCLE, ANDERSON, IN 46013

LEASE

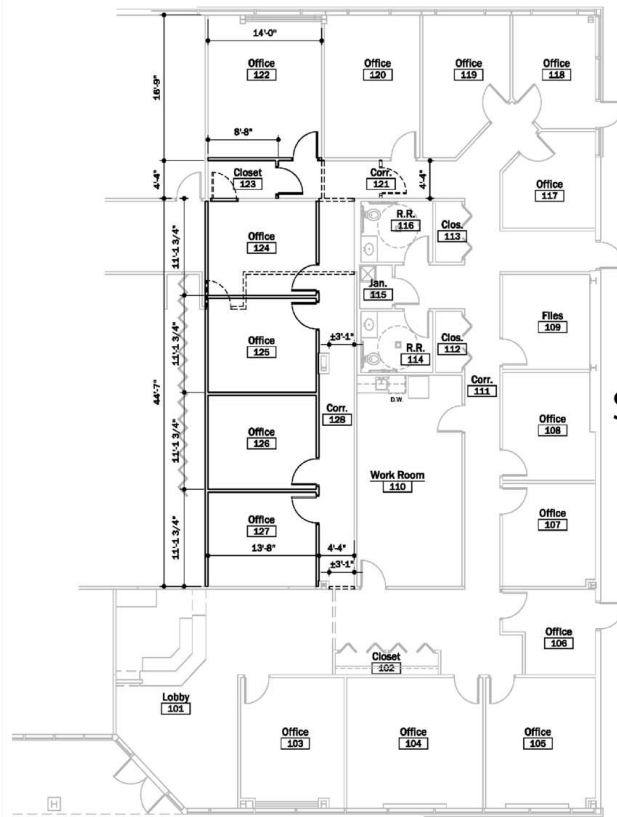
OFFICE



Suite 7315
2,904 SF



Suite 7307
3,561 SF



Suite 7303
4,746 SF

KIM HARTMAN, CPM
Senior Vice President
317.716.5895
khartman@bradleyco.com

TOM OSBORNE, SIOR
Principal
317.258.0179
tosborne@bradleyco.com



7303 - 7315 QUALITY CIRCLE, ANDERSON, IN 46013

LEASE

OFFICE



KIM HARTMAN, CPM
 Senior Vice President
 317.716.5895
 khartman@bradleyco.com

TOM OSBORNE, SIOR
 Principal
 317.258.0179
 tosbome@bradleyco.com



7303 - 7315 QUALITY CIRCLE, ANDERSON, IN 46013

LEASE

OFFICE

FLAGSHIP BUSINESS PARK

Since its inception, Flagship Business Park has become the destination of choice for regional and international businesses. Located within a well-funded TIF district, Flagship is an Indiana Certified Technology Park that has Foreign Trade Zone status.

CORPORATE NEIGHBORS

- + Anderson University
- + Carter Logistics
- + Caliber Funding
- + Carl D. Erskine Rehab Center
- + Central Indiana Orthopedics
- + Church of God Ministries
- + Conduent
- + Corp. for Economic Development
- + Durham Engineering
- + FedEx Freight
- + FF&S, Inc.
- + Flagship Enterprise Center
- + Greenville Technology, Inc.
- + Home Instead Senior Care
- + Hy-Pro Filtration / Donaldson
- + Lincare
- + Midwest POS Solutions
- + Nestle USA
- + NTN Driveshaft Inc.
- + Precision Strip
- + Technoplast USA
- + Zatkoff Seals & Packings



KIM HARTMAN, CPM
 Senior Vice President
 317.716.5895
 khartman@bradleyco.com

TOM OSBORNE, SIOR
 Principal
 317.258.0179
 tosborne@bradleyco.com