

# FOR LEASE

935 N PLUM GROVE ROAD, SUITE G  
SCHAUMBURG, IL 60173

CONTACT US TODAY:

**Eric Wagener**

847-706-7155

ewagener@owenwagener.com

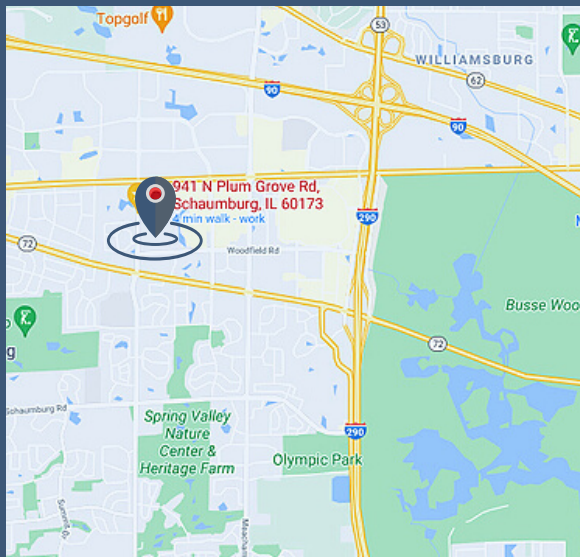
Owen Wagener & Co.

941 N. Plum Grove Rd., Suite B

Schaumburg, IL 60173

www.owenwagener.com

## SINGLE-STORY OFFICE BUILDING



### SPECS:

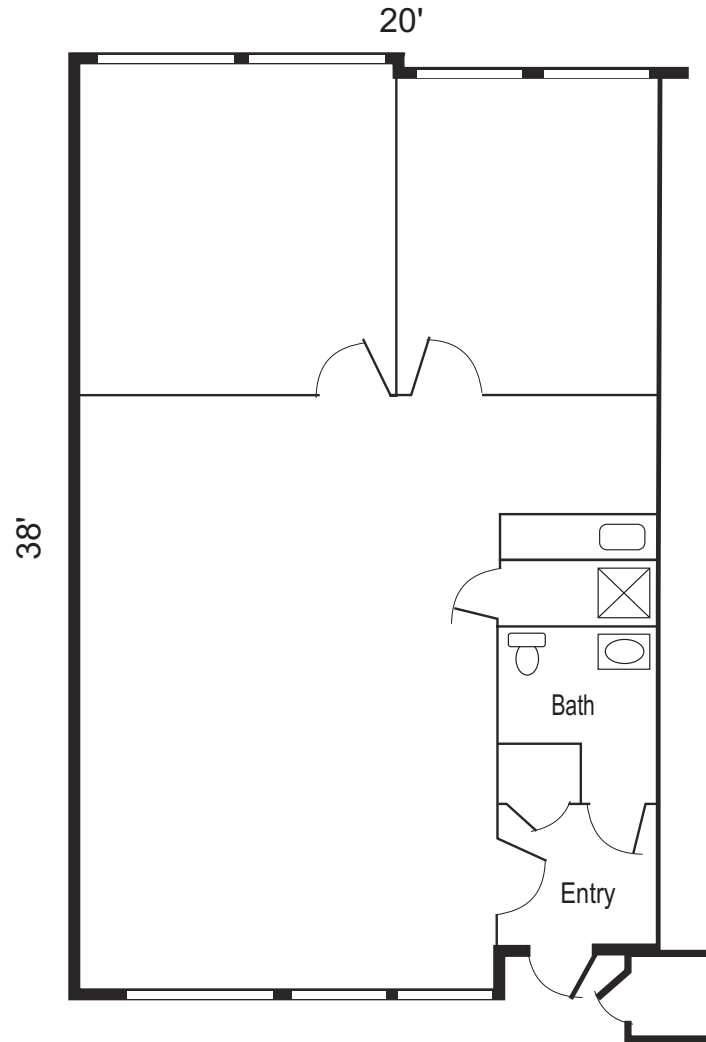
- PRIME OFFICE IN PROFESSIONAL BUSINESS PARK
- 2 PRIVATE OFFICES
- MINUTES TO I-90 & RT. 53 INTERCHANGE
- EXCELLENT NATURAL LIGHT
- BEAUTIFULLY LANDSCAPED OFFICE PARK
- KITCHENETTE WITH SINK

<b>Space Available:</b>	<b>855 SF</b>
<b>Total Building Size:</b>	<b>5,295 SF</b>
<b>Description:</b>	<b>Premium Office Unit</b>
<b>Parking:</b>	<b>Ample</b>
<b>Year Built</b>	<b>1984</b>
<b>Heat:</b>	<b>Gas Forced Air &amp; AC</b>
<b>Monthly Rent:</b>	<b>\$1,069.00 Per Month (\$15/SF) Gross</b>
<b>Taxes:</b>	<b>Included</b>
<b>Operating Expenses:</b>	<b>Included</b>

All information herein is from sources reliable but not guaranteed accurate. Subject to errors, omissions, and to changes of price and terms, prior sale or lease, all without notice.

935 N PLUM GROVE RD., SUITE G  
SCHAUMBURG, IL 60173

855 SF



YOUR CHICAGOLAND COMMERCIAL  
REAL ESTATE EXPERT, SINCE 1964.