

4732 S BROADWAY, ENGLEWOOD, CO 80113

CAR LOT FOR LEASE/ LAND LEASE AVAILABLE

\$7,000/MONTH NN

SOLID RED LINE SHOWS FOR LEASE

4732 SOUTH BROADWAY, ENGLEWOOD, CO 80113

# LAND/ CAR LOT FOR LEASE

FOR MORE INFORMATION PLEASE CONTACT



**MARTIN FRENCH**

CO License# FA100089636

📞 303-956-0338

✉️ [mfrench@kwcommercial.com](mailto:mfrench@kwcommercial.com)

**GENE LUCERO**

CO License# Er224431

📞 303-888-9198

✉️ [glucero@lucerofinancial.com](mailto:glucero@lucerofinancial.com)

**KW COMMERCIAL URBAN ELITE**

3550 West 38th Avenue, Suite 11, Denver, CO 80211

Office: 303-458-3800 | Cell: 303-956-0338

🌐 [kwcommercial.com](http://kwcommercial.com)



# PROPERTY OVERVIEW

4732 S BROADWAY, ENGLEWOOD, CO 80113

## PROPERTY HIGHLIGHTS

- Parcel ID: **2077-10-4-08-027**
- Zoning: **MU-B-2 Mixed Use**
- Parking Ratio: **5/1,000 SF**
- Prime location in low-vacancy retail district
- Ample parking on property---up to 76 vehicles
- Located on .34 Acres (15,500 SF); 250' frontage on South Broadway
- Ideal for both redevelopment or using existing building and signage.
- Can expand .40 acres to .74 acres
- Building: **1,601 SF GLA**
- Construction: **Masonry or Concrete Block**
- Building Class: **C**
- One curb cut
- Over 30,000 Vehicles Per Day

## PRIME LOCATION

Located directly off busy South Broadway (over 30,000 VPD), a major north/south retail corridor that runs through the Denver, CO MSA (19th largest MSA in the US---population 3,025,000). Centered in an active retail submarket and located near quick serve restaurants, upscale retail, banks, grocery stores, hardware stores, gas stations, dealerships, and auto repair. Average Household Income within two miles: \$115,458. Population within two miles: 64,324.

## VERSATILE ZONING

Flexible Englewood MU-B-2 (Mixed Use) zoning district designed to provide retail and services to support surrounding areas and neighborhoods. Allowed uses include Auditorium, School, Music Venue, Restaurant, Hotel, Medical Marijuana, Medical Service, Office, Check Cashing, Commercial Kitchen for Food Delivery, Broadcasting/ Recording Studio, Tattoo Shop, Multi-Unit Dwelling, Residential Care, Adult Entertainment, Liquor Store, Group Home, Mortuary, Auto Pawn Broker, Auto Sales, Brewery/Distillery/ Winery (Conditional use) and many more.

Building can be expanded to cover up to 90% of lot with 5'-15' setbacks and up to 60' height.



**Property available to tour  
by appointment only.  
Please do not disturb  
current tenants.**

FOR MORE INFORMATION PLEASE CONTACT

**Disclaimer:** The information provided in this Offering Memorandum is subject to verification and may be updated without notice. Prospective buyers are advised to conduct their own due diligence and consult with legal and financial advisors before making any investment decisions.



### MARTIN FRENCH

CO License# FA100089636

☎ 303-956-0338

✉ mfrench@kwcommercial.com

### GENE LUCERO

CO License# Er224431

☎ 303-888-9198

✉ glucero@lucerofinancial.com

### KW COMMERCIAL URBAN ELITE

3550 West 38th Avenue, Suite 11, Denver, CO 80211

Office: 303-458-3800 | Cell: 303-956-0338

🌐 kwcommercial.com



# AERIAL MAP

4732 S BROADWAY, ENGLEWOOD, CO 80113



FOR MORE INFORMATION PLEASE CONTACT

**Disclaimer:** The information provided in this Offering Memorandum is subject to verification and may be updated without notice. Prospective buyers are advised to conduct their own due diligence and consult with legal and financial advisors before making any investment decisions.

**LUCERO**  
FINANCIAL GROUP  
Real Estate • Mortgage • Development

**MARTIN FRENCH**

CO License# FA100089636

📞 303-956-0338

✉ [mfrench@kwcommercial.com](mailto:mfrench@kwcommercial.com)

**GENE LUCERO**

CO License# Er224431

📞 303- 888-9198

✉ [glucero@lucerofinancial.com](mailto:glucero@lucerofinancial.com)

**KW COMMERCIAL URBAN ELITE**

3550 West 38th Avenue, Suite 11, Denver, CO 80211

Office: 303-458-3800 | Cell: 303-956-0338

🌐 [kwcommercial.com](http://kwcommercial.com)

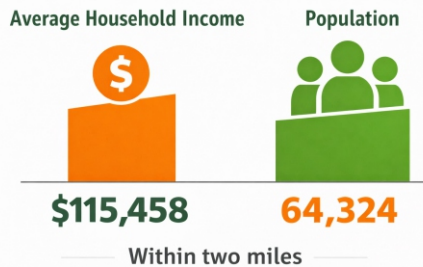


# DEMOGRAPHICS

4732 S BROADWAY, ENGLEWOOD, CO 80113

## SALES

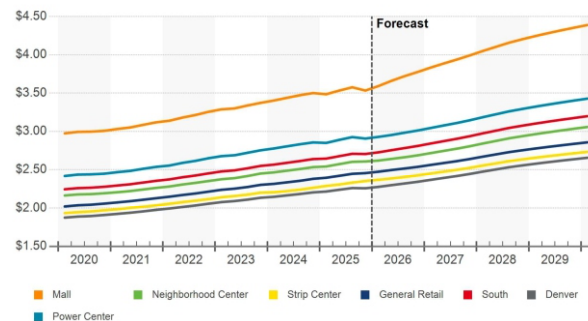
Deal volume in South Denver rebounded in the past year. Annual deal volume amounts to \$109 million, in line with the five-year annual average. General Retail Sales average \$294.17/SF in the entire Retail South Submarket with average cap rates around 6.8%. Because interest rates remain somewhat elevated, many buyers are foregoing financing and paying all-cash in this submarket, as of Q1 2026. Notable recent sales in the area include 5055 South Broadway which sold for \$2,476,000 or \$761/SF at a 5.6% cap rate, and Shops at Riverbend at 5350 South Santa Fe Drive which sold for \$6,350,000 or \$381/SF at a 7.1% cap rate. Another shopping center at 4909-4959 South Broadway sold at a 5.0% cap rate for \$3,775,000.



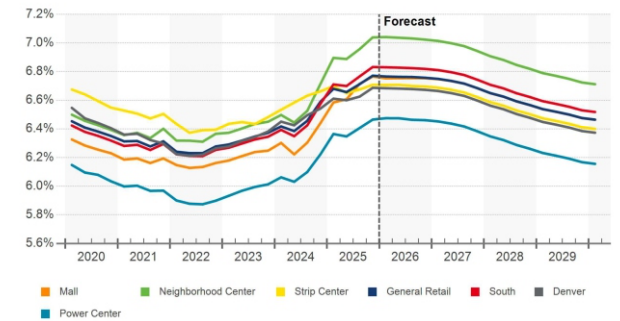
## LEASING

Available retail space in the South Submarket remains scarce, and competition for the right type of space in the right location is supporting rent growth. Retail asking rents are up 2.5% year over year. The Denver market has maintained a sub 5% availability rate since late 2022. Conditions are even tighter in the South Submarket, with availability at just 5.3%. Brokers have noted that these are some of the tightest conditions that they have seen in their careers.

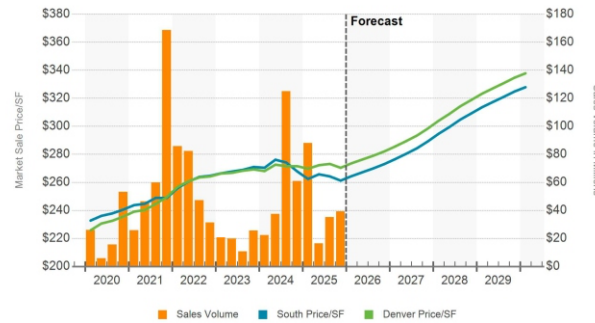
MARKET ASKING RENT PER SQUARE FEET



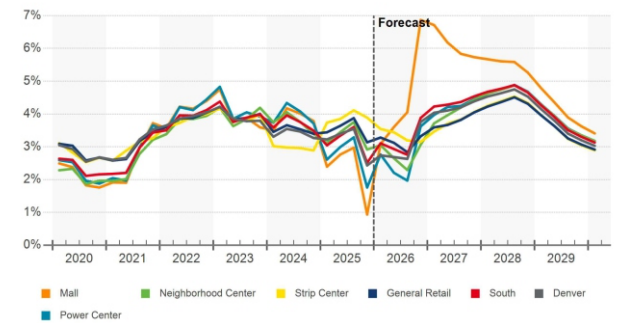
MARKET CAP RATE



SALES VOLUME & MARKET SALE PRICE PER SF



MARKET ASKING RENT GROWTH (YOY)



ALL INFORMATION ON DEMOGRAPHICS PROVIDED BY COSTAR

FOR MORE INFORMATION PLEASE CONTACT

**Disclaimer:** The information provided in this Offering Memorandum is subject to verification and may be updated without notice. Prospective buyers are advised to conduct their own due diligence and consult with legal and financial advisors before making any investment decisions.



**MARTIN FRENCH**

CO License# FA100089636

☎ 303-956-0338

✉ mfrench@kwcommercial.com

**GENE LUCERO**

CO License# Er224431

☎ 303- 888-9198

✉ glucero@lucerofinancial.com

**KW COMMERCIAL URBAN ELITE**

3550 West 38th Avenue, Suite 11, Denver, CO 80211

Office: 303-458-3800 | Cell: 303-956-0338

🌐 kwcommercial.com

