



JUST SIGNED!



BUBBAKOO'S BURRITOS

NOW OPEN



# BEL AIR TOWN CENTER

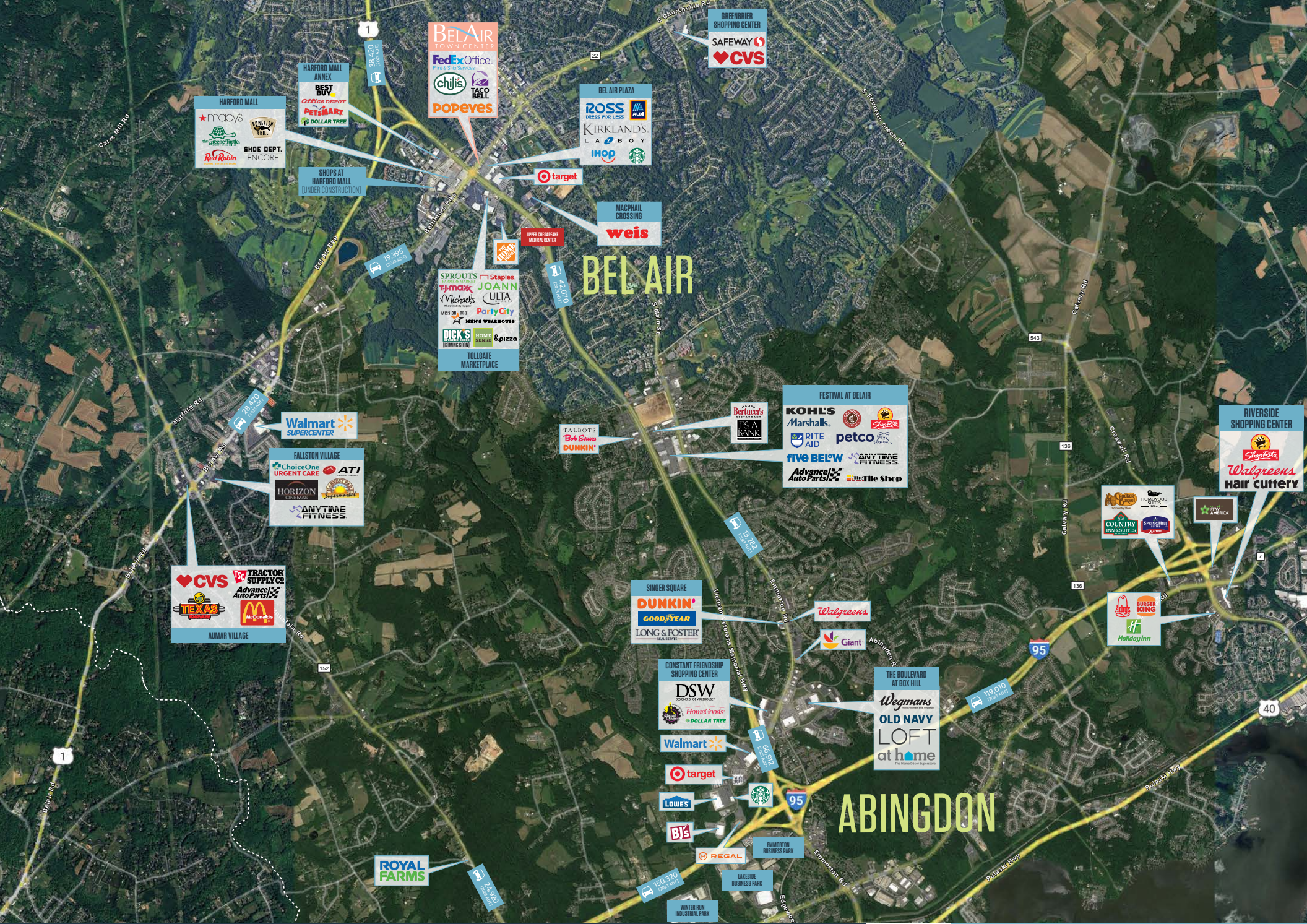
502 BALTIMORE PIKE | BEL AIR, MD 21014

klnb

RACHEL KLEIN  
rklein@klnb.com  
443-632-2087

JOE MEKULSKI  
jmekulski@klnb.com  
443-632-1343

RYAN MINNEHAN  
rminnehan@klnb.com  
443-632-2088



**HARFORD MALL**

- macy's
- the Gifters Turtle
- Red Robin
- SHOE DEPT. ENCORE

**HARFORD MALL ANNEX**

- BEST BUY
- Office DEPOT
- PETSMART
- DOLLAR TREE

**BEL AIR TOWN CENTER**

- FedEx Office
- chj's
- ALDO
- POPEYES

**BEL AIR PLAZA**

- ROSS DRESS FOR LESS
- KIRKLAND'S
- LABOY
- IHOPE
- Starbucks

**GREENBRIER SHOPPING CENTER**

- SAFEWAY
- CVS

# BEL AIR

**MACPHAIL CROSSING**

- weis

**SPROUTS**

- Staples
- JOANN
- ULTA
- Michaels
- Party City
- MISSION BBQ
- NEWS WAREHOUSE
- DICK'S Sporting Goods
- HOME DEPOT
- Spizzo

**Walmart SUPERCENTER**

**FALLSTON VILLAGE**

- ChoiceOne URGENT CARE
- ATI
- HORIZON CINEMAS
- ANYTIME FITNESS

**AUMAR VILLAGE**

- CVS
- TRACTOR SUPPLY CO.
- Advance Auto Parts
- McDonald's

**TALBOTS**

- Bob Evans
- DUNKIN'

**FESTIVAL AT BELAIR**

- Bertucci's
- KOHL'S
- Marshalls
- RITE AID
- petco
- five BEL'W
- ANYTIME FITNESS
- Advance Auto Parts
- The Tile Shop

**RIVERSIDE SHOPPING CENTER**

- Shoppers
- Walgreens
- Hair cuttery

**COUNTRY INN & SUITES**

- HomeWood Suites
- SpringHill Suites

**SINGER SQUARE**

- DUNKIN'
- GOODYEAR
- LONG & FOSTER REAL ESTATE

**Walgreens**

- Giant

**Arbys**

- BURGER KING
- Holiday Inn

**CONSTANT FRIENDSHIP SHOPPING CENTER**

- DSW
- HomeGoods
- DOLLAR TREE
- Walmart

**THE BOULEVARD AT BOX HILL**

- Wegmans
- OLD NAVY
- LOFT at home

# ABINGDON

**ROYAL FARMS**

**LOWE'S**

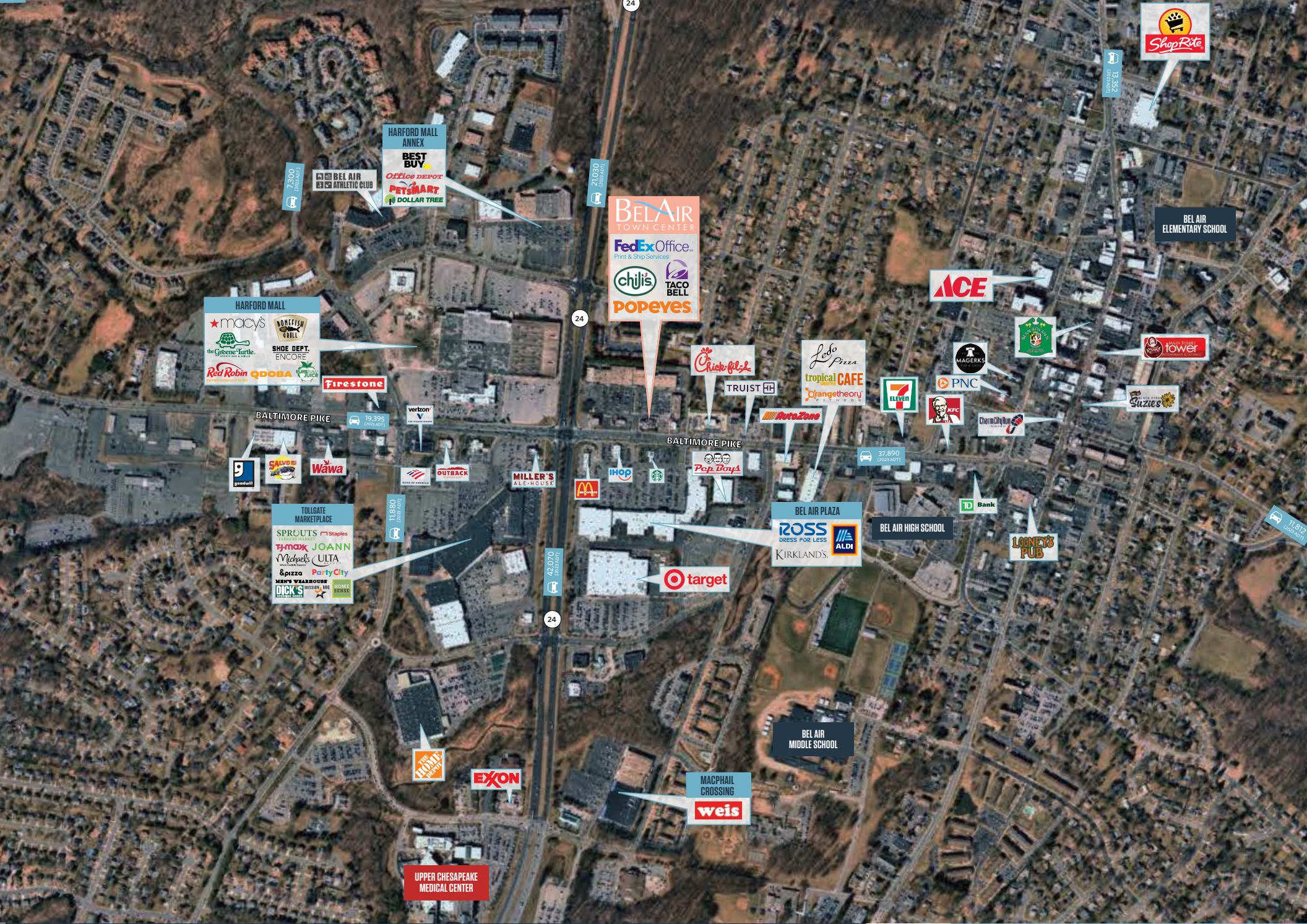
**B.Y.**

**REGAL**

**ENMORTON BUSINESS PARK**

**LAKESIDE BUSINESS PARK**

**WINTER RUN INDUSTRIAL PARK**



HARFORD MALL ANNEX  
**BEST BUY**  
*Office depot*  
**PETSMART**  
**DOLLAR TREE**

**BEL AIR TOWN CENTER**  
**FedEx Office**  
 Print & Ship Services  
**chijis**  
**TACO BELL**  
**POPEYES**

HARFORD MALL  
**macy's**  
**BONEFISH GRILL**  
 the Greene Turtle  
**SHOE DEPT. ENCORE**  
**Red Robin**  
**QDOBA**

**Firestone**

BALTIMORE PIKE  
**Wawa**  
**Wawa**  
**Wawa**

TOLLGATE MARKETPLACE  
**SPROUTS**  
**Staples**  
**ty-max**  
**JOANN**  
**Michaels**  
**ULTA**  
**&pizza**  
**Party City**  
**MEN'S SHARON**  
**DICK'S**

**MILLER'S**  
 AL E-HOUSE

**ihop**

**McDonald's**

**Chick-fil-A**

**TRUIST** HH

**AutoZone**

**Lido PIZZA**  
**tropical CAFE**  
**OrangeTheory**

**7 ELEVEN**

**KFC**

**PNC**

**MAGERS**

**WALKER TOWER**

**Suzie's**

**Charlemagne**

**TD Bank**

**LOONEY'S PUB**

BEL AIR PLAZA  
**ROSS**  
 DRESS FOR LESS  
**KIRKLAND'S**  
**ALDI**

**target**

BEL AIR HIGH SCHOOL

BEL AIR MIDDLE SCHOOL

UPPER CHESAPEAKE MEDICAL CENTER

MACPHAIL CROSSING  
**weis**

BEL AIR ELEMENTARY SCHOOL

24

21,030  
[2023 ADT]

AVAILABLE 6,200 SF

B  
BARRETT'S

Landmark

ESSEL'S

Juvenile Furniture

AVAILABLE ~1,400 SF

MY SALON

LIBERATOR'S

Mobile

SalonCentric

Woodford Bakery

HOLLYWOOD JAZZ

PROFESSIONAL VISION CENTER

HARFORD MALL

macy's

BONEFISH GRILL

the Greene Turtle

Red Robin

SHOE DEPT. ENCORE

FedEx Office

BEL AIR TOWN CENTER

FORZE

M ATHNASIUM

AVAILABLE 960 SF

Charm

MATTRESS FIRM

TACO BELL

chili's

POPEYES

Chick-fil-z

BALTIMORE PIKE

37,890  
[2023 ADT]

MILLER'S ALE HOUSE

42,070  
[2023 ADT]

McDonald's

IHOP

Starbucks

NTB TIRE & SERVICE CENTER

24

TOLLGATE MARKETPLACE

SPROUTS FARMERS MARKET

Staples

TJ-maxx

JOANN

Michael's

ULTA BEAUTY

&pizza

Party City

MEN'S WEARHOUSE

DICK'S SPORTING GOODS

MISSION BBQ

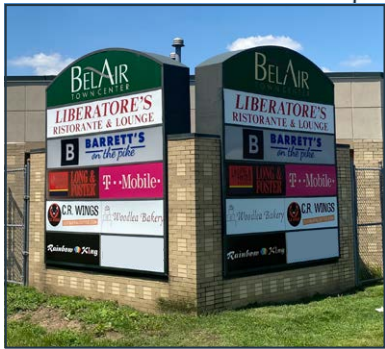
HOME SENSE

BEL AIR PLAZA

ROSS DRESS FOR LESS

ALDI

KIRKLAND'S



TENANTS	592 AVAILABLE 6,200 SF		550 Naz's Halal 1,600 SF		528 The Mint Room 3,070 SF	
	588 Barrett's on the Pike	5,500 SF	548 Woodlea Bakery	1,600 SF	520 Forze Training Gym	3,600 SF
582 Lendmark	2,000 SF	546 C.R. Wings	1,600 SF	516 Mathnasium	1,410 SF	
580 Leslie's	4,500 SF	544 Poke Bowl	1,600 SF	514 AVAILABLE 960 SF		
570 Jarrettsville Furniture	8,060 SF	542 Cigar Leaf	1,800 SF	512 Chatime	1,200 SF	
568 AVAILABLE +/- 1,400 SF		540-B Bubbakoo's Burritos	1,702 SF	508 FedEx Office	4,725 SF	
564 My Salon Suite	5,927 SF	540-A Glamour Nails & Spa	1,800 SF	504 Taco Bell		
562 Liberatore's	5,200 SF	536 Lean Kitchen	1,620 SF	502 Chili's		
586 T-Mobile	3,520 SF	534 Hollywood Tans	2,385 SF	500 Popeyes		
556 Salon Centric	3,304 SF	532 Menchie's	1,620 SF			
554 Rainbow King	3,830 SF	530 Professional Vision Center	1,751 SF			

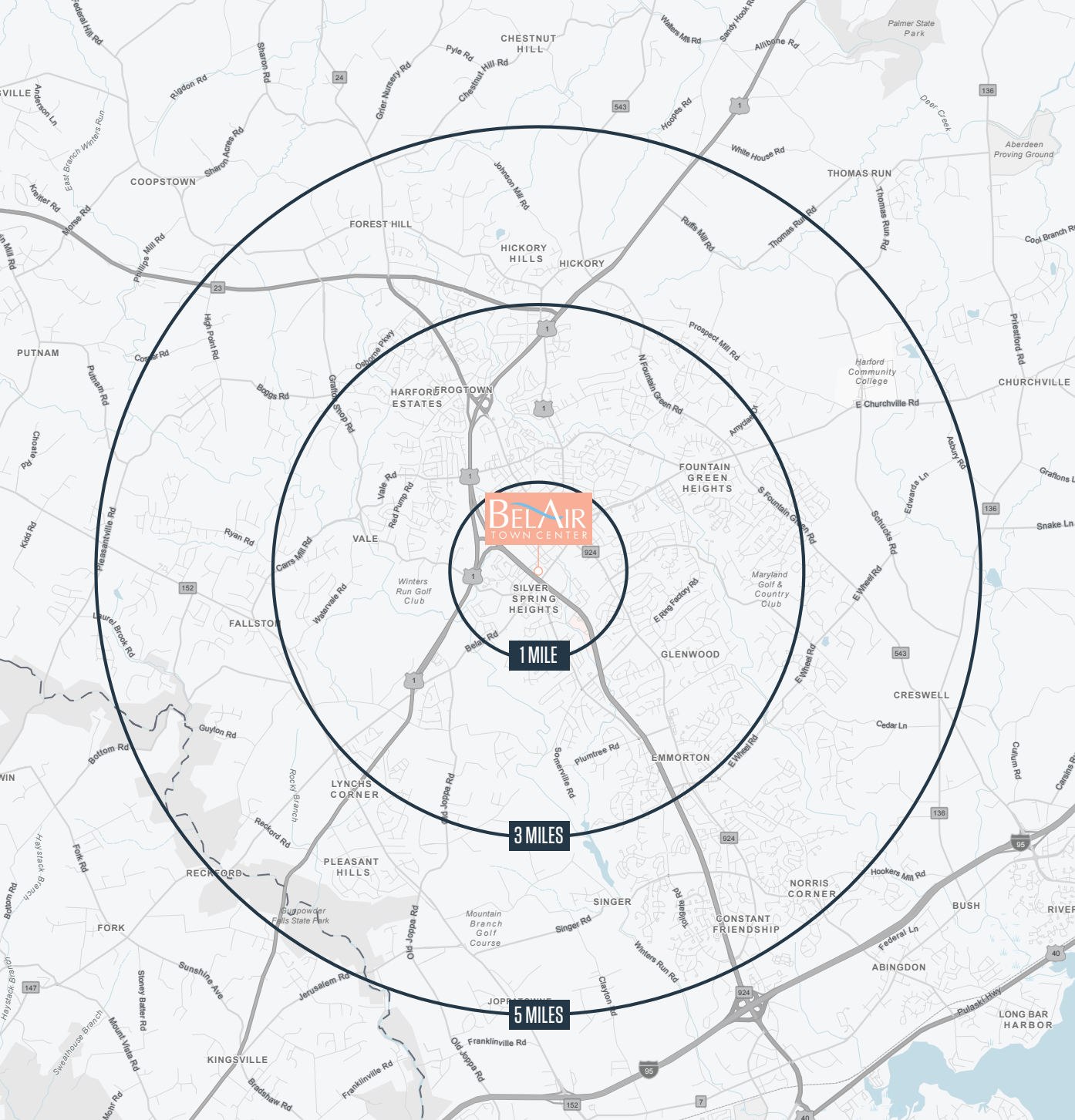
SUITE 568  
+/- 1,400 SF



SUITE 592  
6,200 SF







## POPULATION

<b>6,491</b> 1 MILE	<b>70,336</b> 3 MILES	<b>117,719</b> 5 MILES
------------------------	--------------------------	---------------------------

## DAYTIME POPULATION

<b>22,045</b> 1 MILE	<b>73,769</b> 3 MILES	<b>110,312</b> 5 MILES
-------------------------	--------------------------	---------------------------

## TOTAL HOUSEHOLDS

<b>2,880</b> 1 MILE	<b>26,999</b> 3 MILES	<b>44,396</b> 5 MILES
------------------------	--------------------------	--------------------------

## AVG. HOUSEHOLD SIZE

<b>2.19</b> 1 MILE	<b>2.57</b> 3 MILES	<b>2.63</b> 5 MILES
-----------------------	------------------------	------------------------

## AVG. HOUSEHOLD INCOME

<b>\$114,626</b> 1 MILE	<b>\$148,401</b> 3 MILES	<b>\$151,377</b> 5 MILES
----------------------------	-----------------------------	-----------------------------

## TRAFFIC

<b>BALTIMORE PIKE</b>	<b>37,890 ADT</b>
<b>MD-24</b>	<b>21,030 ADT</b>

2024 | ESRI, ESRI AND INFOGROUP, U.S. CENSUS

# BOOMING WITH CONFIDENCE

20.6%  
POPULATION  
WITHIN 3 MILES



Prosperous, established couples in their peak earning years living in suburban homes.

51-65

HEAD OF  
HOUSEHOLD AGE

\$125-\$149K

HOUSEHOLD  
INCOME

5

HOUSEHOLD  
SIZE

## KEY FEATURES

Highly Educated  
Affluent  
Upscale Housing  
Savvy Investors  
Tech Apprentices  
Environmental Philanthropists

# FLOURISHING FAMILIES

19%  
POPULATION  
WITHIN 3 MILES



Affluent, middle ages families and couples earning prosperous incomes and living very comfortable, active lifestyles.

36-45

HEAD OF  
HOUSEHOLD AGE

\$125-\$149K

HOUSEHOLD  
INCOME

5

HOUSEHOLD  
SIZE

## KEY FEATURES

Affluent  
Charitable Contributors  
Athletic Activities  
Saving for College  
High Credit Card Use  
Family-Oriented Activities

# SUBURBAN STYLE

17.4%  
POPULATION  
WITHIN 3 MILES



Middle-aged, ethnically mixed suburban families and couples earning upscale incomes.

36-45

HEAD OF  
HOUSEHOLD AGE

\$75-\$99K

HOUSEHOLD  
INCOME

2

HOUSEHOLD  
SIZE

## KEY FEATURES

Comfortable Lifestyle  
Suburban Living  
Politically Diverse  
Family-Centric Activities  
Parents  
Financial Investments

OCT 2023 - SEPT 2024 | DATA PROVIDED BY PLACER LABS INC. (WWW.PLACER.AI) | CALCULATED USING WEIGHTED CENTROID FROM BLOCK GROUPS | DATASET: EXPERIAN: MOSAIC



## CONTACT

RACHEL KLEIN  
rklein@klnb.com  
443-632-2087

JOE MEKULSKI  
jmekulski@klnb.com  
443-632-1343

RYAN MINNEHAN  
rminnehan@klnb.com  
443-632-2088

100 West Road, Suite 505  
Towson, MD 21204

[klnb.com](http://klnb.com)

# klnb

While we have no reason to doubt the accuracy of any of the information supplied, we cannot, and do not, guarantee its accuracy. All information should be independently verified prior to a purchase or lease of the property. We are not responsible for errors, omissions, misuse, or misinterpretation of information contained herein and make no warranty of any kind, express or implied, with respect to the property or any other matters.

