

801 Bond Way, Delray Beach, Florida

801 Bond Way, Delray Beach, FL 33483



Nicole Melveney

Douglas Elliman Commercial

550 Smithtown Byp, Suite 117, Smithtown, NY 11787

nicole.melveney@elliman.com

(732) 567-5375

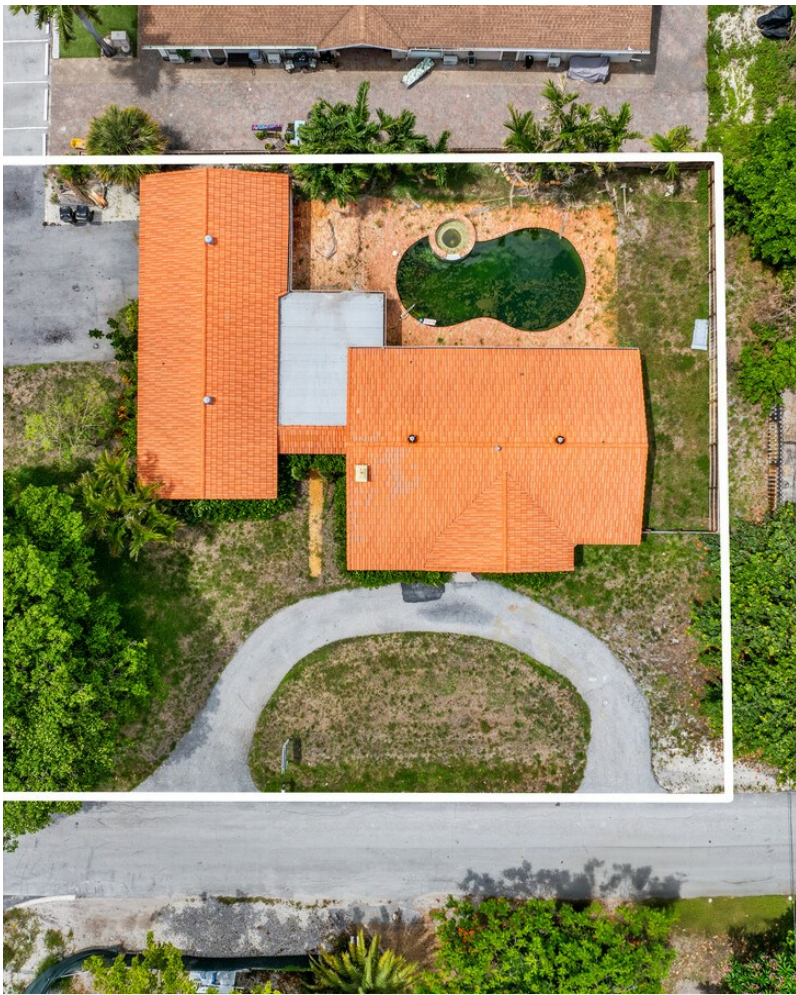
801 Bond Way, Delray Beach, Florida

\$2,000,000

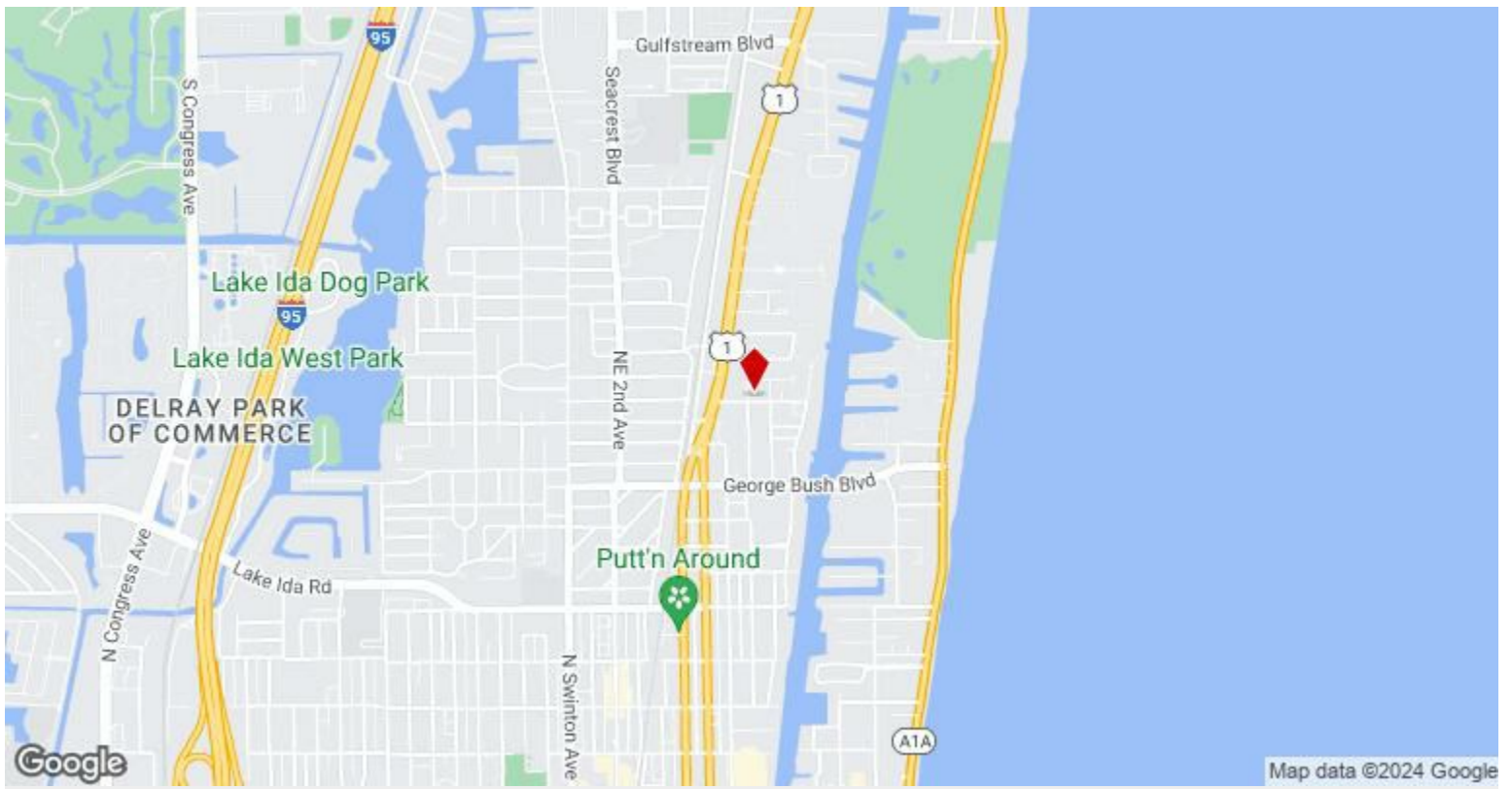
The Land of Opportunity * You want to be here!!!!

Located in East Delray Beach's, Palm Beach County - desirable Palm Trail residential community, is blocks from the renowned Atlantic Ave and close to the beautiful Delray Beaches, delightful shops, exquisite restaurants and so much more. This area is a highly sought-after neighborhood that has undergone significant high-end redevelopment over the last few years and continues to beautifully evolve with stunning high-end townhouses and single-family residences. This corner property boasts a total square footage of 13,383, approximately 100x130, nestled on 0.31...

- Excellent Investment Opportunity in the highly sought after High-End Residential Community of Palm Trail, Delray Beach
- Blocks from the Renowned Atlantic Ave and Close to the Beautiful Delray Beaches, Delightful Shops, Exquisite Restaurants and So Much More.
- Spacious Corner Lot with an Array of options to



Price:	\$2,000,000
No. Units:	2
Property Type:	Multifamily
Property Subtype:	Apartment
Building Class:	C
Sale Type:	Investment
Lot Size:	0.31 AC
Building Size:	13,383 SF
Sale Conditions:	Redevelopment Project
No. Beds:	2
No. Stories:	1
Year Built:	1955
Parking Ratio:	0/1,000 SF
Zoning Description:	RL—RL-MULTIPLE FAMILY (LO
APN / Parcel ID:	12-43-46-09-08-001-0141



801 Bond Way, Delray Beach, FL 33483

Property Photos



801 Bond Way - Ariel 4



801 Bond Way - Ariel 5