

22 North 7th Street Akron, PA | Available For Lease

±1,000 - 5,000 SF Retail Available



PROPERTY OVERVIEW

The building is a former schoolhouse built in the early 1900s with original crown moldings, hardwood floors, chalkboards, staircases, and more. For the past 57 years the health food store has occupied ±1,500 SF on the 1st floor and pays rent of \$3,000 per month plus utilities.

There is an apartment on the 2nd floor currently used by a massage therapist and esthetician who pays \$100.00* per month, there are two tenants in the basement: one pays \$70.00* per month and the other \$30.00* per month for storage only.

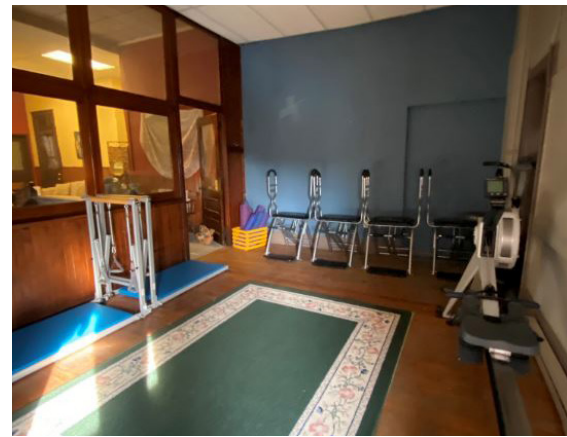
*The low rents are not permanent and don't represent the much higher income that comes from the business.

TOM TROCOLI
717.390.9858
www.bennettwilliams.com

York Office: 3528 Concord Rd. York, PA 17402
Exton Office: 1 East Uwchlan Avenue, Suite 409, Exton, PA 19341
Lancaster Office: 2173 Embassy Dr. Lancaster, PA 17603
New Jersey Office: 309 Fellowship Rd, Suite 200, Mt. Laurel, NJ 08054

Bennett WILLIAMS
RETAIL

ACTIVE MEMBER OF:
RETAIL BROKERS
NETWORK

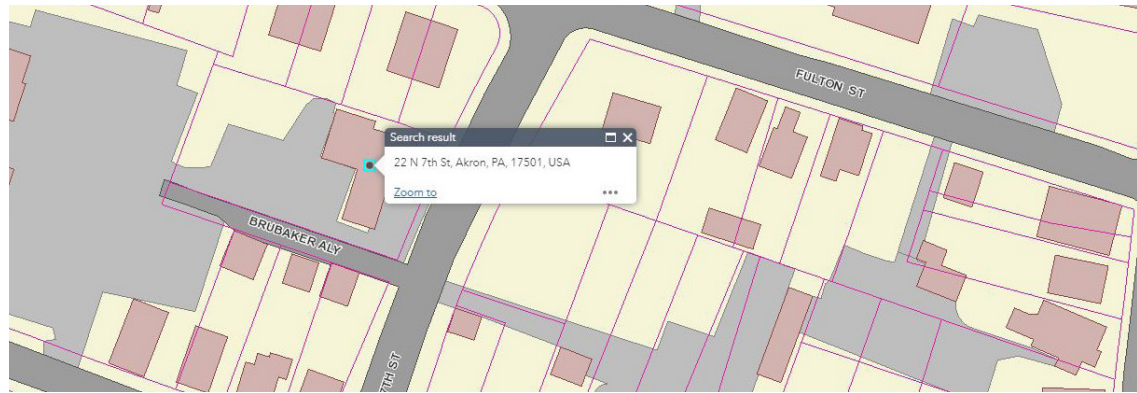
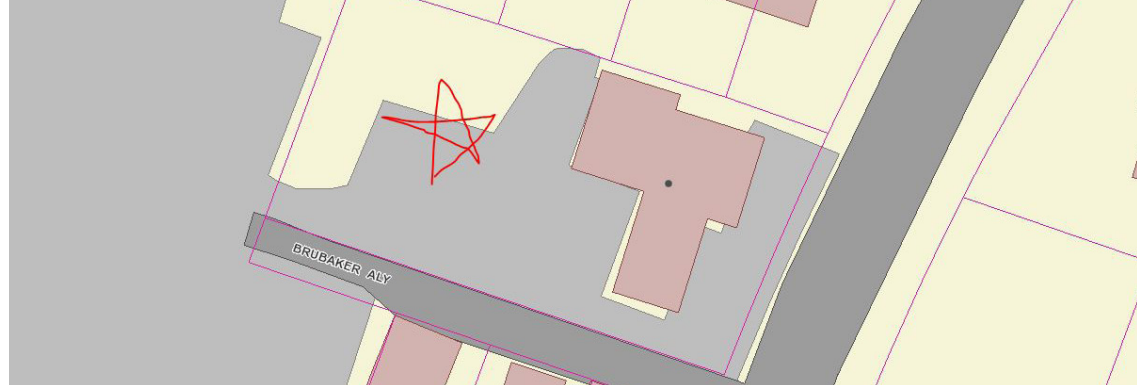


TOM TROCCOLI
717.390.9858
www.bennettwilliams.com

York Office: 3528 Concord Rd. York, PA 17402
Exton Office: 1 East Uwchlan Avenue, Suite 409, Exton, PA 19341
Lancaster Office: 2173 Embassy Dr. Lancaster, PA 17603
New Jersey Office: 309 Fellowship Rd, Suite 200, Mt. Laurel, NJ 08054

Bennett Williams
RETAIL

ACTIVE MEMBER OF:
RETAIL BROKERS
NETWORK



TOM TROCCOLI
717.390.9858
www.bennettwilliams.com

York Office: 3528 Concord Rd. York, PA 17402
Exton Office: 1 East Uwchlan Avenue, Suite 409, Exton, PA 19341
Lancaster Office: 2173 Embassy Dr. Lancaster, PA 17603
New Jersey Office: 309 Fellowship Rd, Suite 200, Mt. Laurel, NJ 08054

Bennett WILLIAMS
RETAIL

ACTIVE MEMBER OF:
RETAIL BROKERS
NETWORK