



CONCEPTUAL RENDERING

CHARLOTTE, NC

Toringdon Place

12135 N Community House Rd | Charlotte, NC
Retail Opportunities for Lease



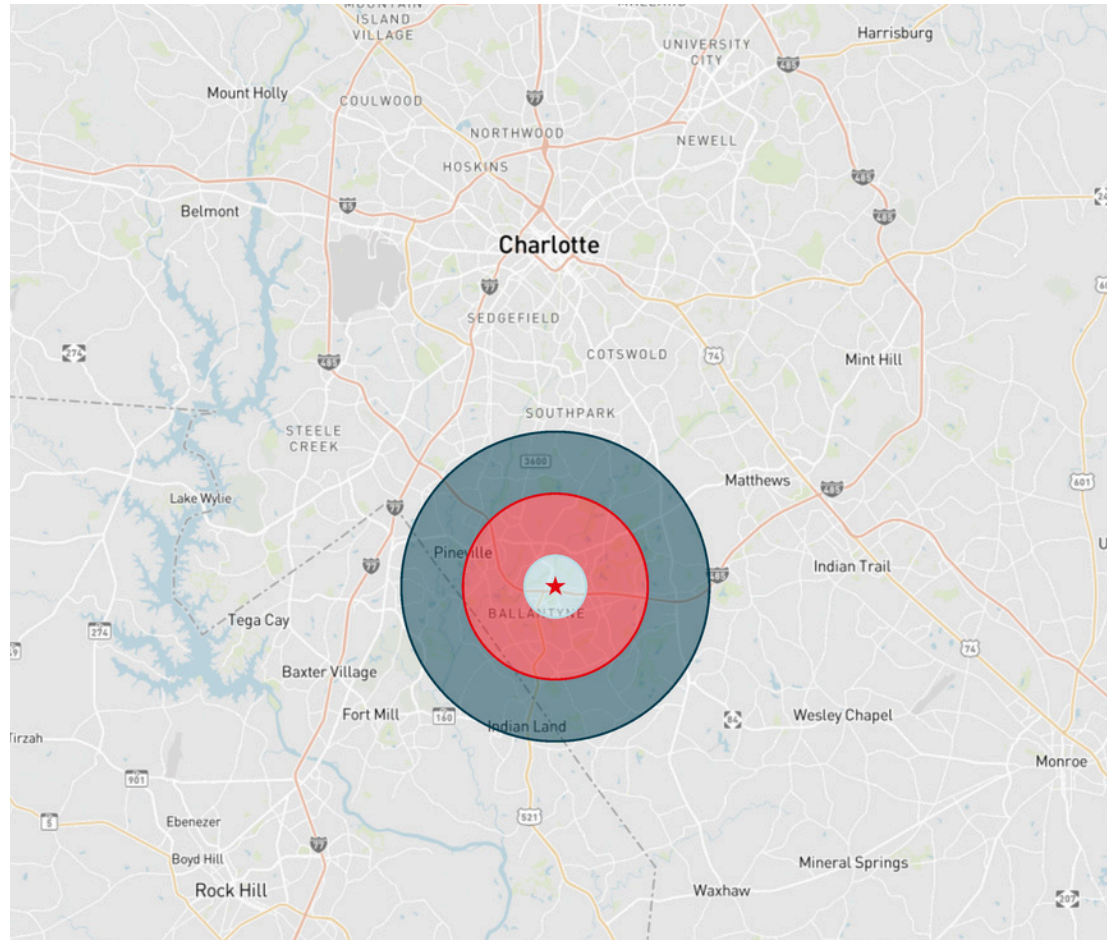
Property Information

12135 N Community House Rd
Charlotte, NC 28277

Set within the heart of Ballantyne neighborhood, Toringdon Place, a $\pm 10,713$ SF retail center, will seamlessly connect residents, professionals, and visitors with essential retail and dining options.

Property Highlights

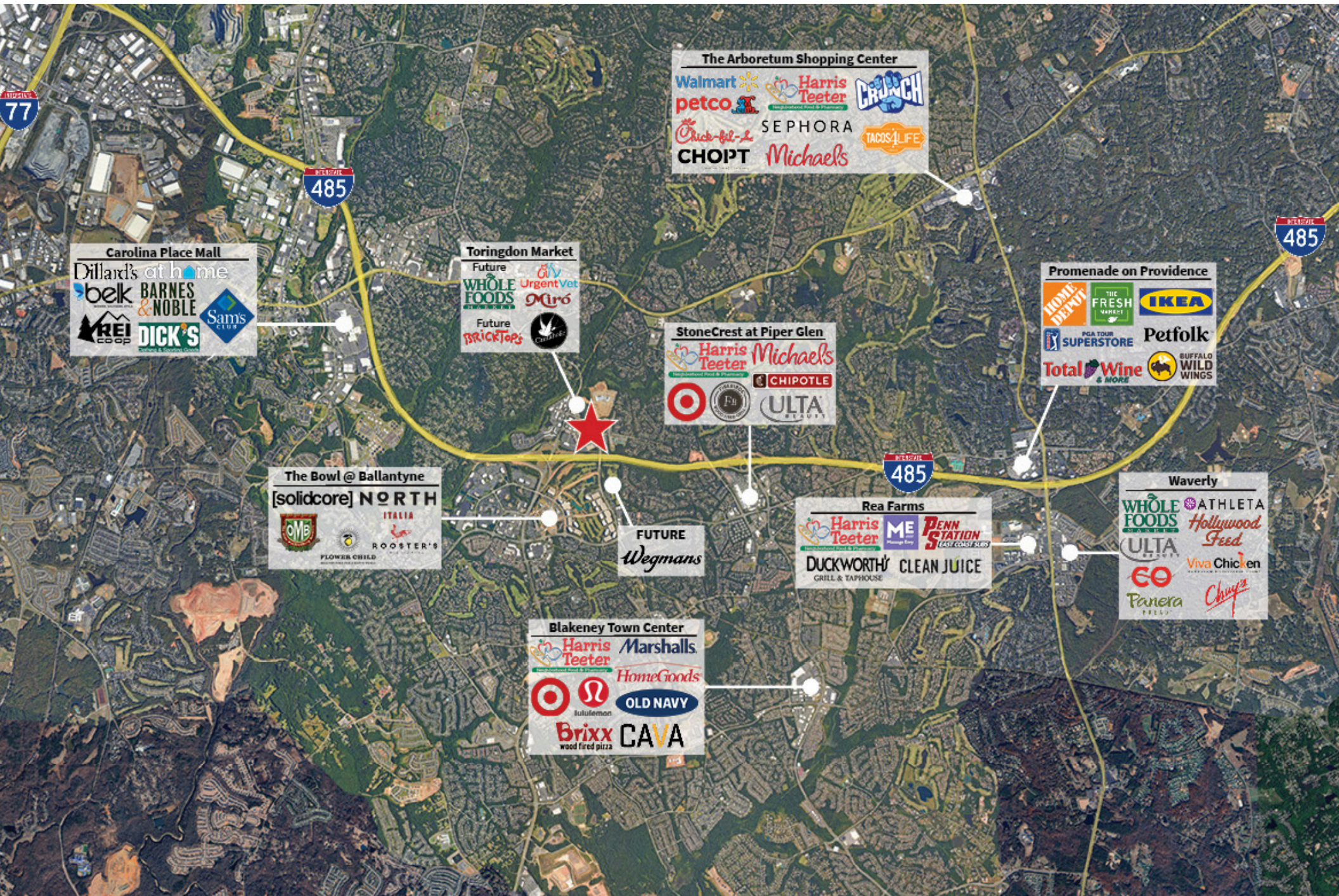
- $\pm 10,713$ SF retail availability
- Delivery Q1 2027
- Excellent visibility and access at hard-corner signalized intersection
- 63 total parking spaces, 5.89/1,000 SF parking ratio
- Situated within established Toringdon Office Park (22,919+ employees)
- Wegmans grocery to be built 0.25 mi south along North Community House Rd
- Located directly adjacent to:
 - 750,000 SF of Class-A office
 - 865 total units within walking distance
 - 120-key hotel



	1 mile	3 miles	5 miles
Total Population	8,378	89,161	204,495
Total Households	3,755	36,693	80,993
Median Household Income	\$104,644	\$111,032	\$120,540
Median Age	38	39.6	39.6

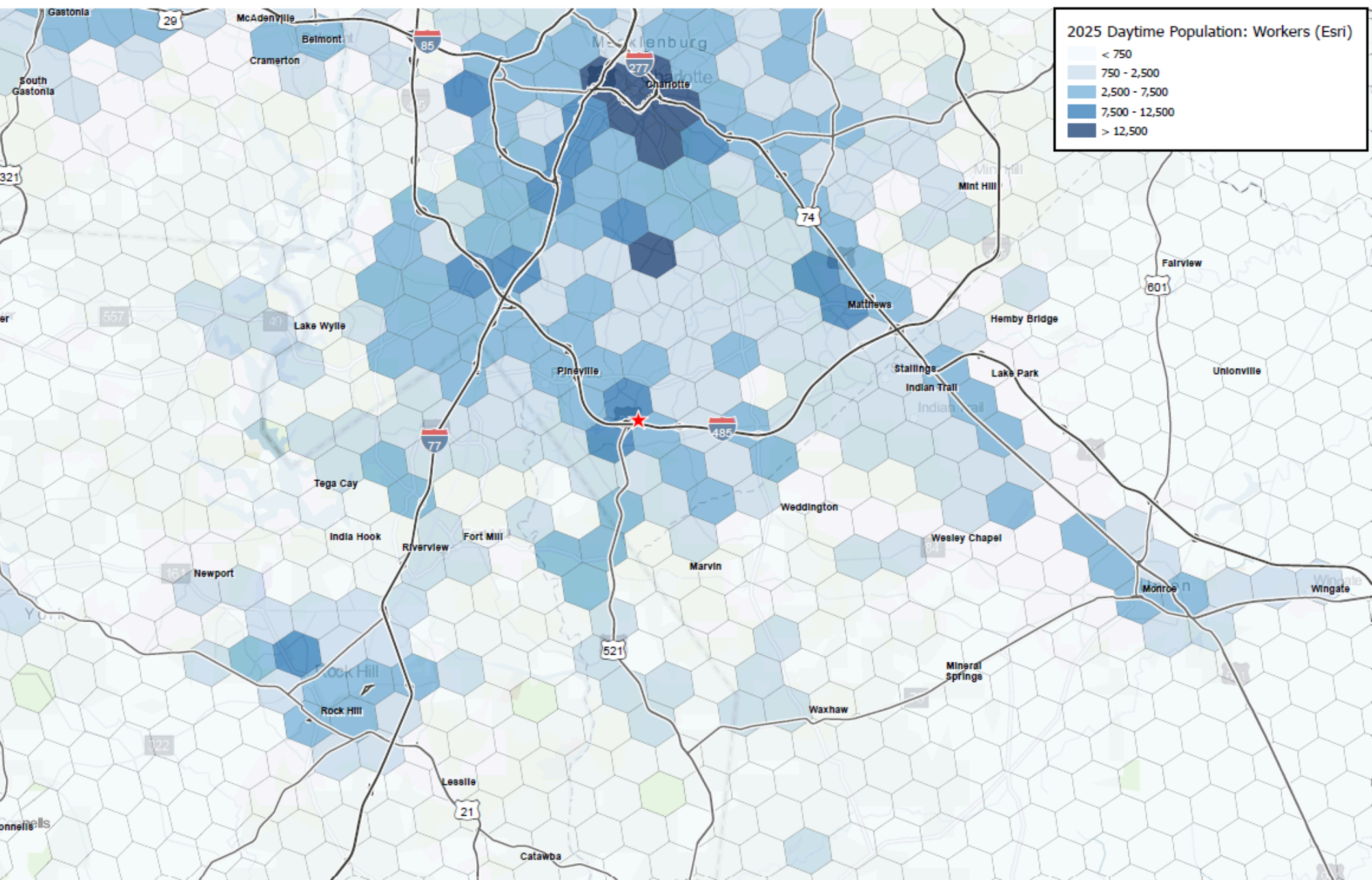
Esri, 2025

Market Overview



Daytime Population

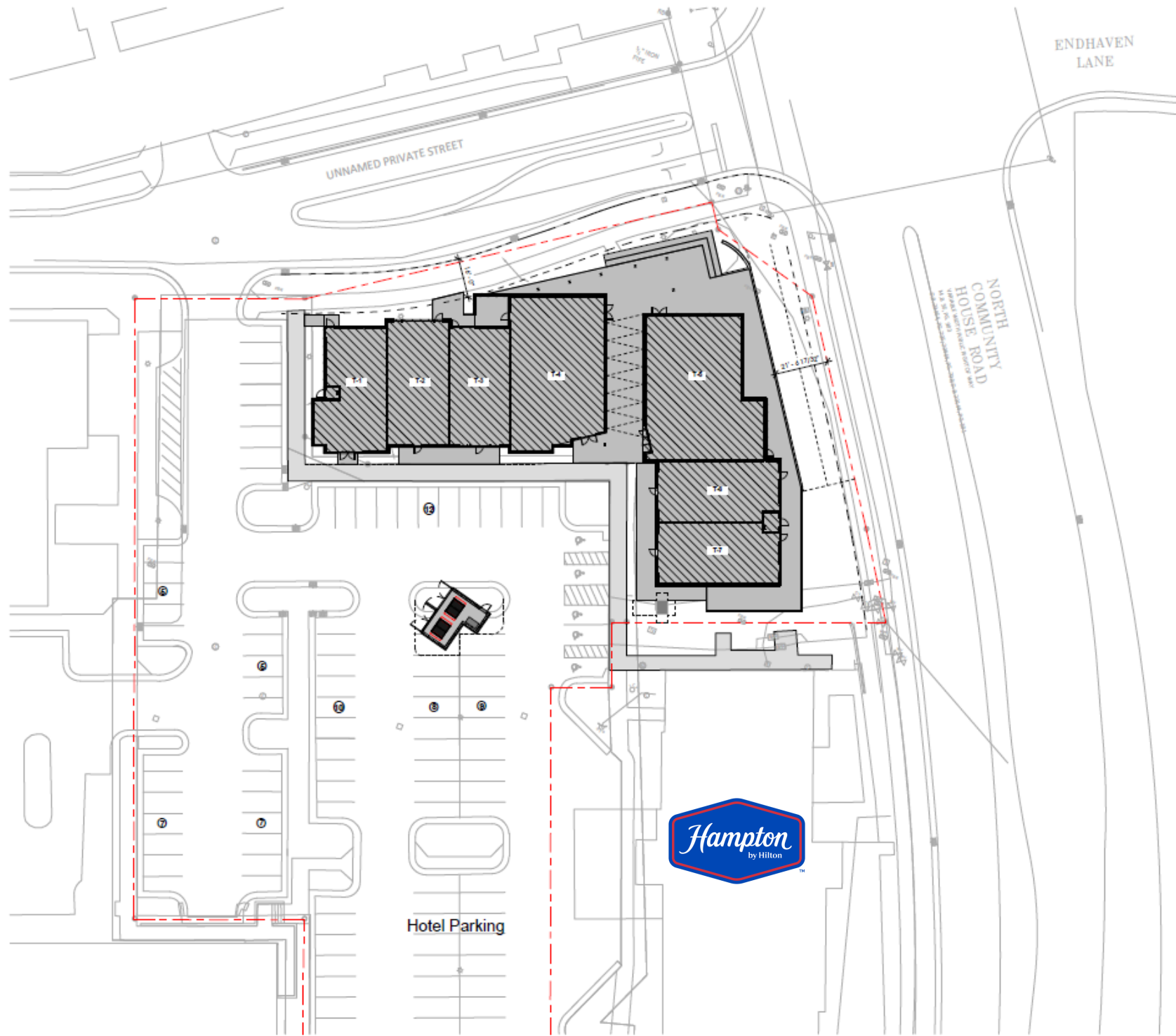
12135 N Community House Rd, Charlotte, NC 28277



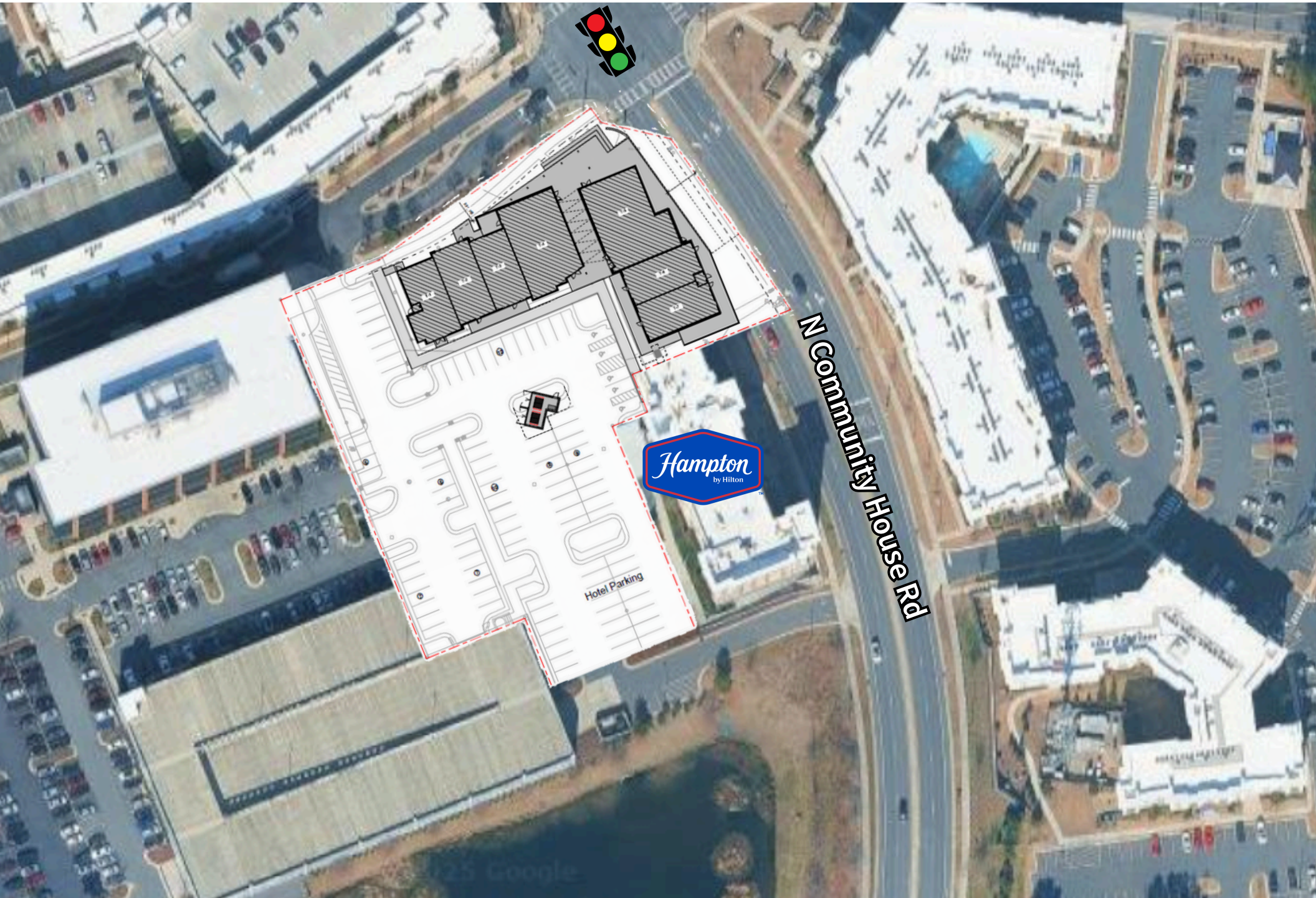
Site Overview



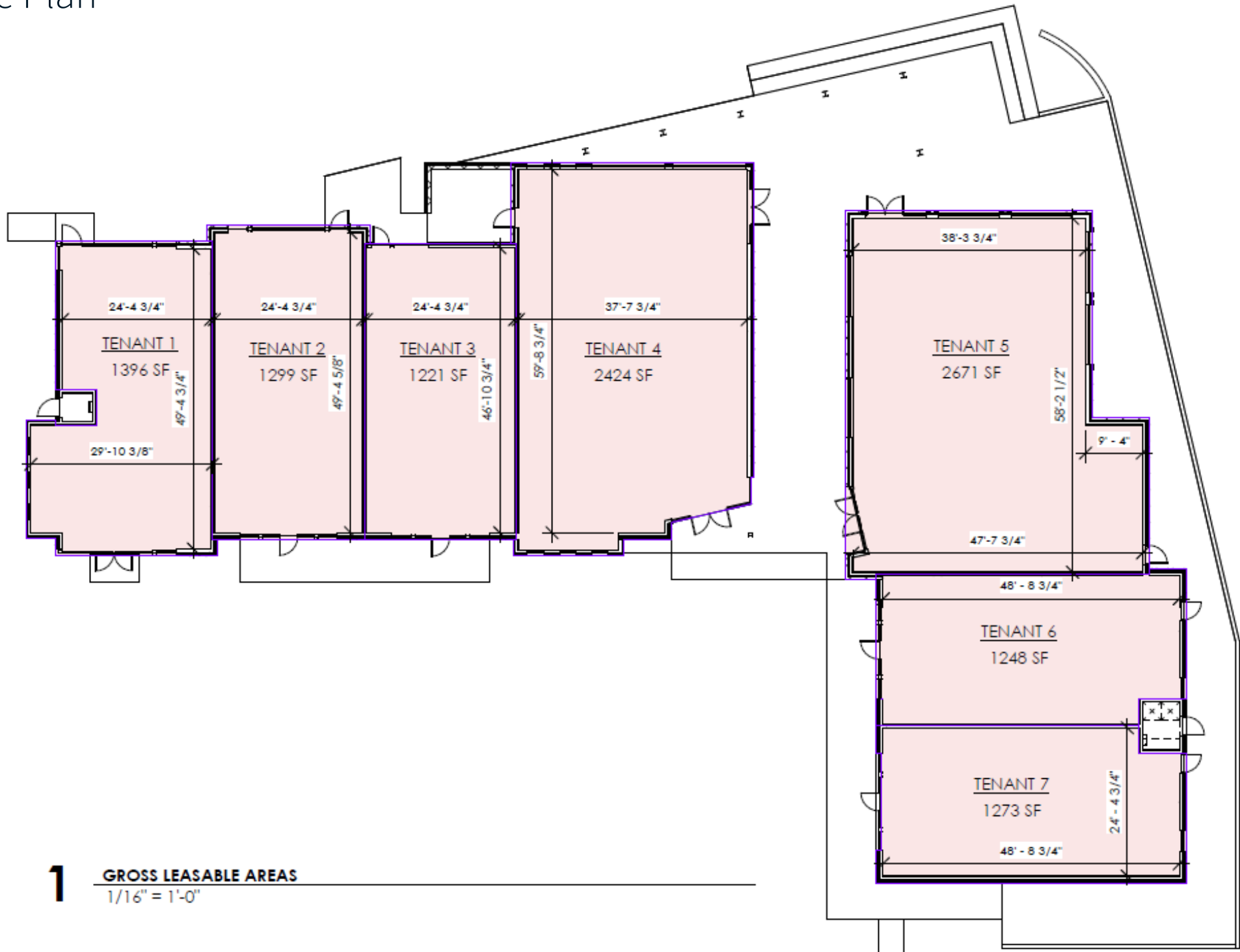
Overall Site Plan



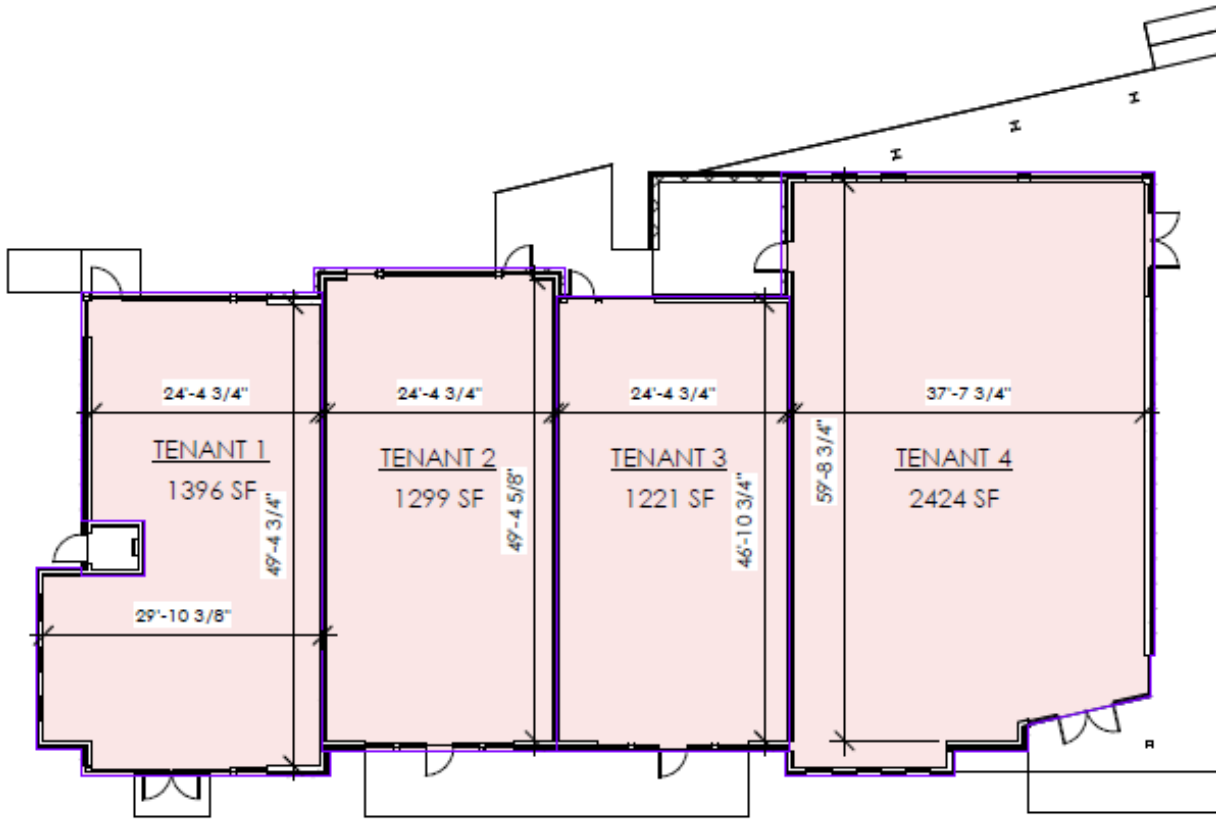
Site Plan Aerial



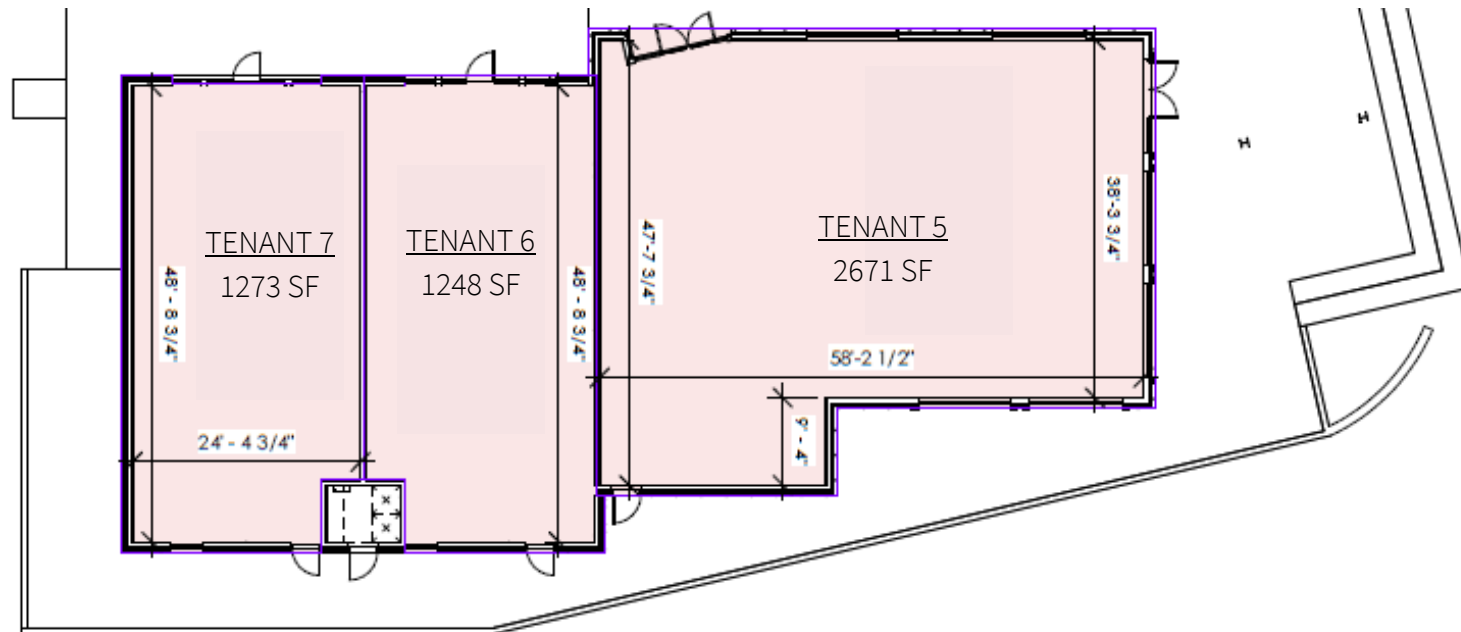
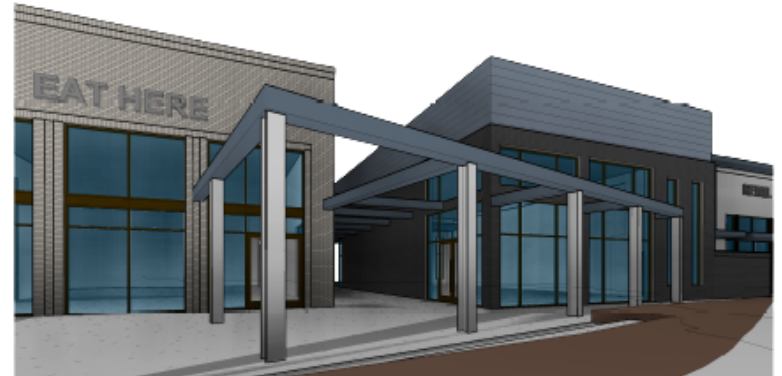
Site Plan



Building 1 Floor Plan



Building 2 Floor Plan



Contact Us:

Margot Bizon

Margot.Bizon@jll.com

+1 704 804 5779

Lindsay Stafford

Lindsay.Stafford@jll.com

+1 980 819 3837

