

31-27 STEINWAY STREET

BETWEEN 31ST AVENUE & BROADWAY | ASTORIA, QUEENS

EASY
PICKINS



31-27 STEINWAY STREET

BETWEEN 31ST AVENUE & BROADWAY | ASTORIA, QUEENS

PROPERTY HIGHLIGHTS

- Blade signage
- Space can be divided
- High foot traffic area
- Dense residential neighborhood
- Municipal parking lot across the street
- Neighbors include: *Banana Republic, Bank of America, Bath & Body Works, Blink Fitness, Chase, Chipotle, The Children's Place, CityMD, CVS, Dollar Tree, Express, Fabco, Gap Factory Store, McDonald's, Midtown Comics, Popeye's, Snipes, TD Bank, Wingstop, & many more!*

SIZE 3,600 SF Ground (divisible)
3,200 SF Basement

FRONTAGE 40'

POSSESSION Immediate

ASKING RENT Upon Request

TRANSPORTATION 



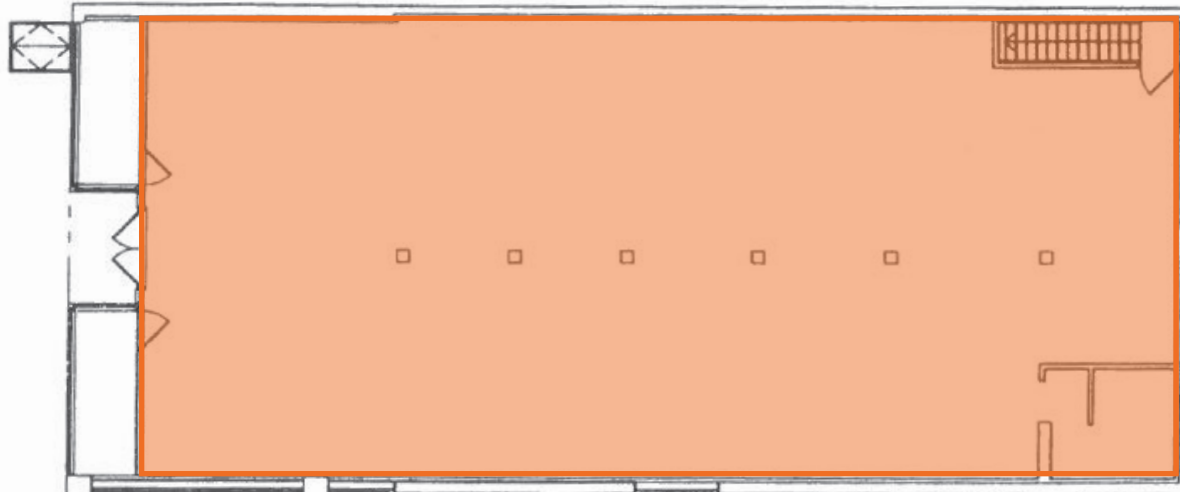
All information supplied in this marketing presentation and/or flyer is from sources deemed reliable and is furnished subject to errors, omissions, modifications, removal of listings from sale/lease and to any listing condition. Any square footage, dimensions, floor plans and/or technical data set forth are approximations and are subject to further elaboration/confirmation.

31-27 STEINWAY STREET

BETWEEN 31ST AVENUE & BROADWAY | ASTORIA, QUEENS

FLOOR PLANS:

GROUND FLOOR - 3,600 SF



BASEMENT - 3,200 SF



31-27 STEINWAY STREET

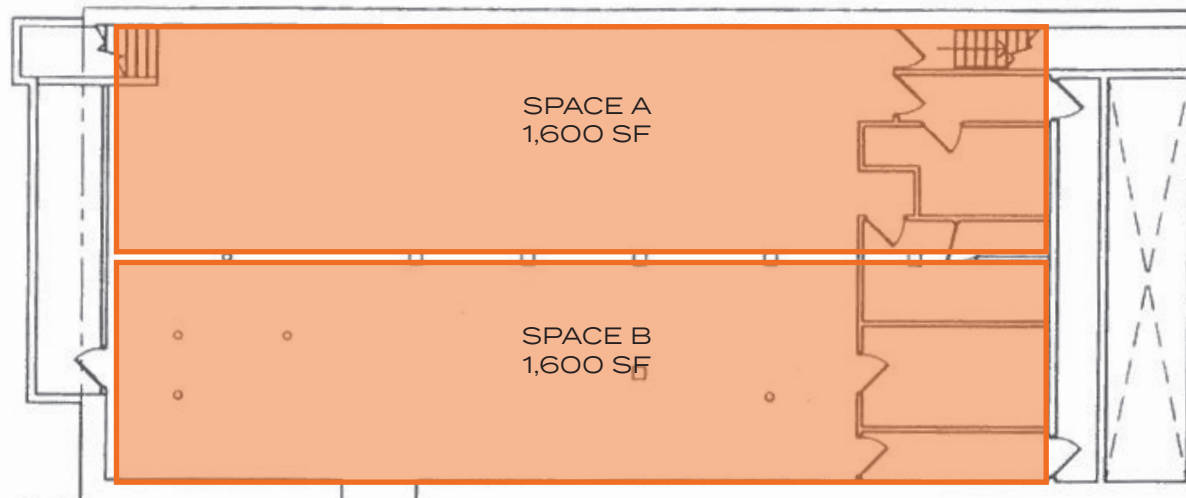
BETWEEN 31ST AVENUE & BROADWAY | ASTORIA, QUEENS

FLOOR PLANS:
DIVISION SCENARIO

GROUND FLOOR



BASEMENT



31-27 STEINWAY STREET

BETWEEN 31ST AVENUE & BROADWAY | ASTORIA, QUEENS

FOR MORE INFORMATION,
PLEASE CONTACT:

MAYER GHONOJA

212.548.3945 | MG@ksrny.com

ELLIOT STEIN

917.993.1442 | EStein@ksrny.com

BARRY FISHBACH

917.273.6752 | Fishbach@ksrny.com



1385 Broadway, 22nd Floor | New York, NY 10018
212.417.9217

ksrny.com

All information supplied in this marketing presentation and/or flyer is from sources deemed reliable and is furnished subject to errors, omissions, modifications, removal of listings from sale/lease and to any listing condition. Any square footage, dimensions, floor plans and/or technical data set forth are approximations and are subject to further elaboration/confirmation.