



AVAILABLE



RETAIL

*THE HARLOW* | *TWO RETAIL SUITES AVAILABLE*  
100 PARK AVENUE, OKLAHOMA CITY, OK

THE  
RETAIL  
GROUP





## PROPERTY DETAILS

### Two Suites Available

<b>Suite 106</b>	3,003 SF
<b>Suite 110</b>	1,917 SF
<b>Asking Base Rent</b>	\$24/SF NNN
<b>Additional Rent</b>	\$4/SF Est.

## PROPERTY HIGHLIGHTS

Highly visible corner in downtown OKC

Ground floor space is within The Harlow, a new multifamily project encompassing two historic buildings set for conversion to 265 apartments

Property connects to First National Center with luxury hotel, apartments, and high-end retail and dining in the heart of downtown OKC

## SNAPSHOT



**Estimated Vehicles/Day  
Broadway at Park Ave.**  
6,542 VPD



**Downtown Population  
Residents**  
11,058



**Downtown Population  
Employees**  
62,695





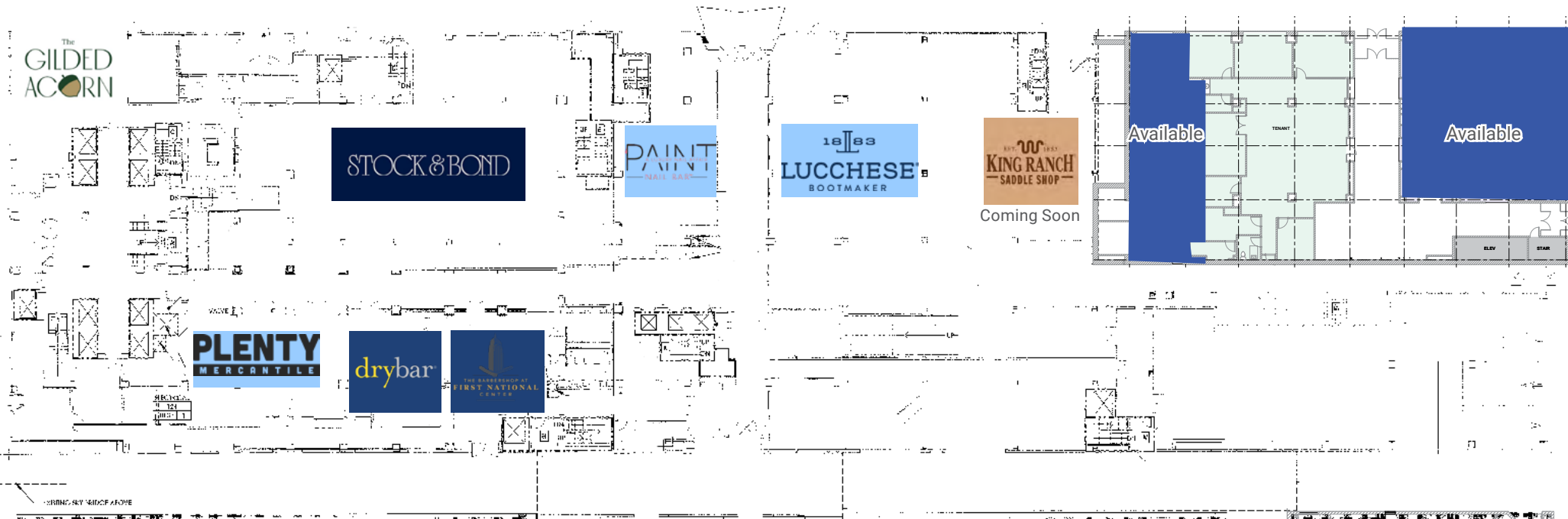
**BROADWAY AVE**

**PARK AVE**

**100 PARK AVENUE, OKLAHOMA CITY, OK | FOR LEASE**





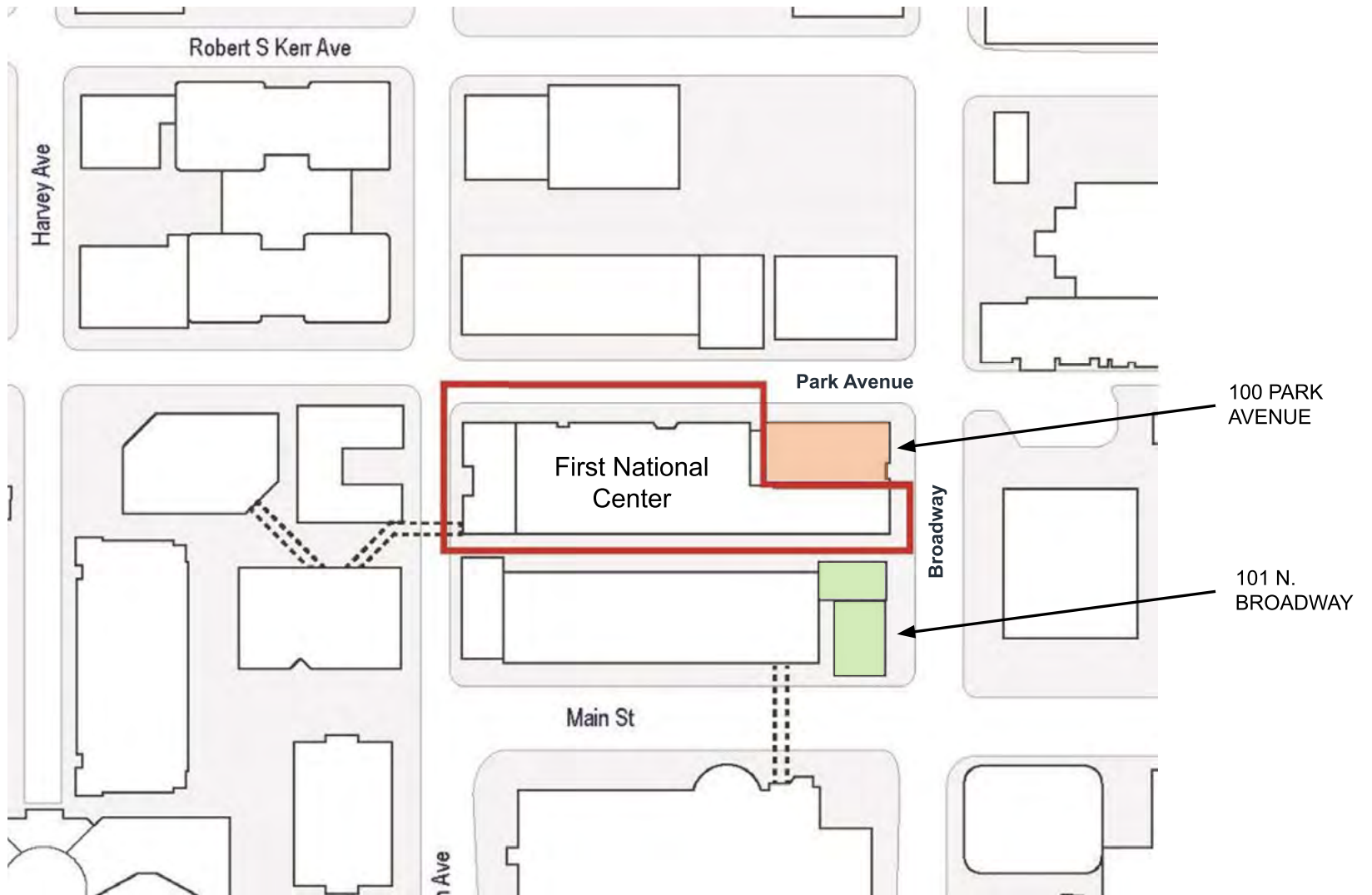


Ground Floor  
10.31.2022



TRADESMAN | architectural studios

100 PARK AVENUE, OKLAHOMA CITY, OK | FOR LEASE





The Harlow will reopen the connection space between 100 Park Avenue and First National Center to activate the corridor and offer accessibility of retailers to business and residential customers for both buildings.





**THE  
RETAIL  
GROUP**

**JAY COHLMIA**  
jaycohlmia@newmarkrp.com  
O: 405.602.2989

**MICHAEL RAPELLA**  
mrapella@newmarkrp.com

The information contained herein was obtained from sources believed reliable; however, Newmark Robinson Park makes no guarantees, warranties or representations as to the completeness or accuracy thereof. The presentation of this property is submitted subject to errors, omissions, change of price or conditions prior to sale or lease, or withdrawal without notice. Independently Owned and Operated.