



1350 Sixteenth Street

Greensboro, North Carolina 27405

Property Highlights

- ± 5000 SF per Unit
- Each Suite has Drive-in Door – Some have (2) Two
- Access to Common Dock Area
- 14 ft Ceiling
- Sprinkler
- All Utilities Included - Motion activated LED lights & Electric
- Short Term Leases Available

For More Information

Chris Lowe, CCIM, SIOR

336 358 3235

clowe@naipt.com

Ben Sturgill

336 358 3229

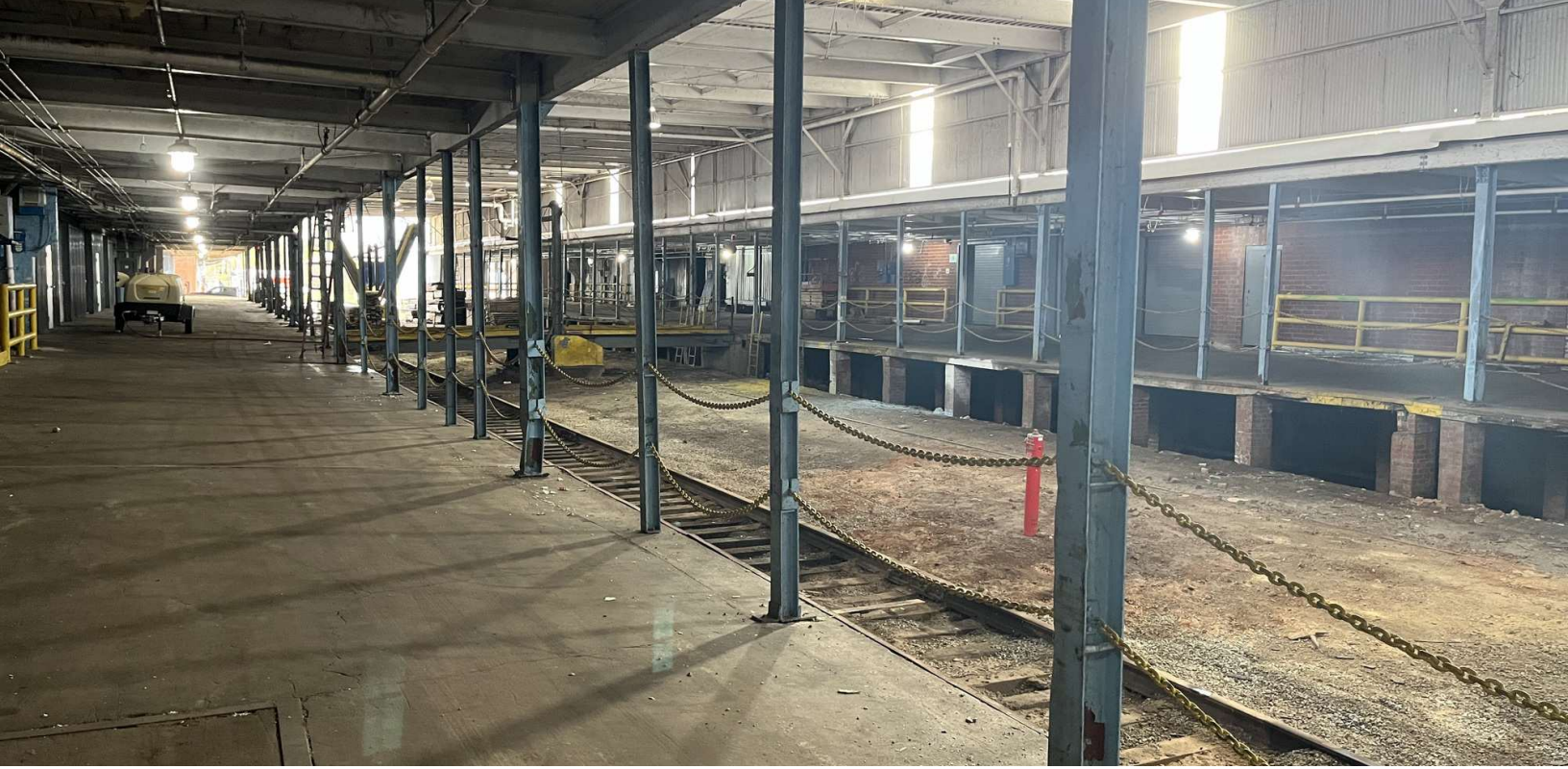
bsturgill@naipt.com

Banks Handy

336 398 3462

bsturgill@naipt.com





We obtained the information above from sources we believe to be reliable. However, we have not verified its accuracy and make no guarantee, warranty or representation about it. It is submitted subject to the possibility of errors, omissions, change of price, rental or other conditions, prior sale, lease or financing, or withdrawal without notice. We include projections, opinions, assumptions or estimates for example only, and they may not represent current or future performance of the property. You and your tax and legal advisors should conduct your own investigation of the property and transaction.

348 N Elm Street
Greensboro, NC 27401
336 373 0995 tel
naipt.com