

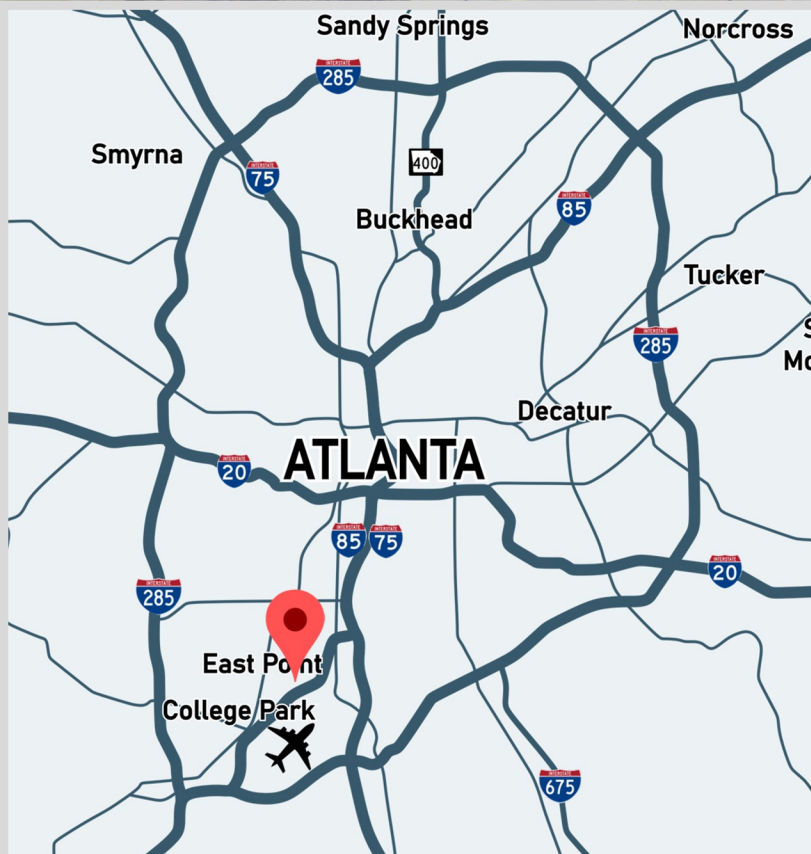
# FOR SALE

1305 Willingham Drive  
East Point, GA 30344



## PROPERTY INFORMATION

- +/- 0.62 Acres of Land
- Zoned Light Industrial (I-1) by the City of East Point
- Includes Building Pad
- +/- 0.41 Acres (18,000 SF) of Outside Storage
- +/- 380 Feet of Road Frontage
- +/- 1 Mile to I-85
- Prime location in the South Atlanta/ Airport Submarket in close proximity to Hartsfield Jackson International Airport and convenient access to Metro Atlanta



**HUGHES COMMERCIAL REAL ESTATE, INC.**  
1303 Hightower Trail, Suite 240, Atlanta, GA 30350  
770-559-1099

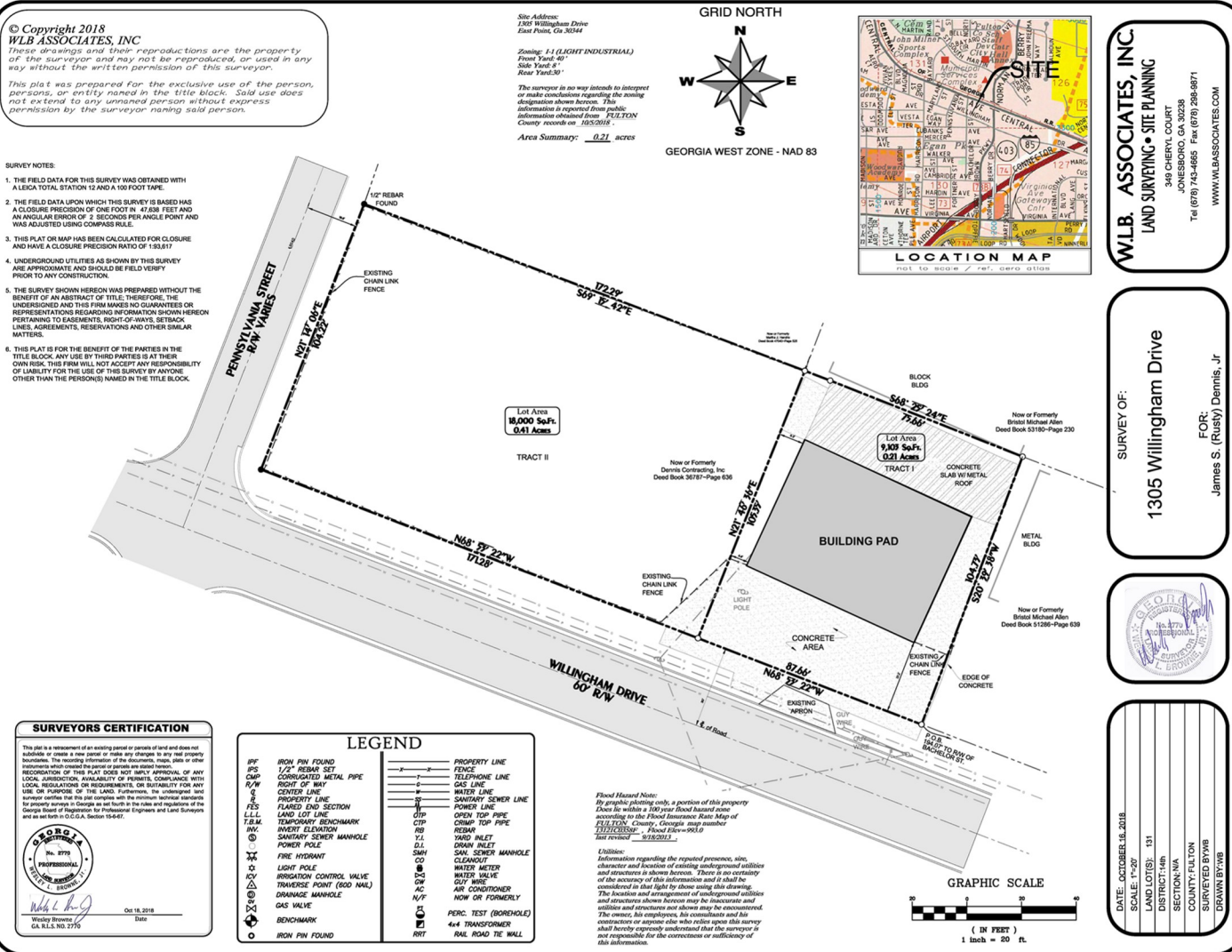
**Bo Hammack**  
404-998-3307  
bo@hughes-cre.com



# FOR SALE

# 1305 Willingham Drive East Point, GA 30344

## PROPERTY SURVEY



**WLB ASSOCIATES, INC**  
LAND SURVEYING • SITE PLANNING

348 CHERRY COURT  
SUITE 308  
DUBLIN, GA 31033  
Tel (678) 743-4866 Fax (678) 298-6871  
WWW.WLBASSOCIATES.COM

SURVEY OF:  
**1305 Willingham Drive**

FOR:  
James S. (Rusty) Dennis, Jr.



DATE: OCTOBER 18, 2018  
SCALE: 1"=20'  
LAND LOT(S): 131  
DISTRICT: 14B  
SECTION: N/A  
COUNTY: FULTON  
SURVEYED BY: WB  
DRAWN BY: WB



**HUGHES COMMERCIAL REAL ESTATE, INC.**  
1303 Hightower Trail, Suite 240, Atlanta, GA 30350  
770-559-1099

**Bo Hammack**  
404-998-3307  
bo@hughes-cre.com