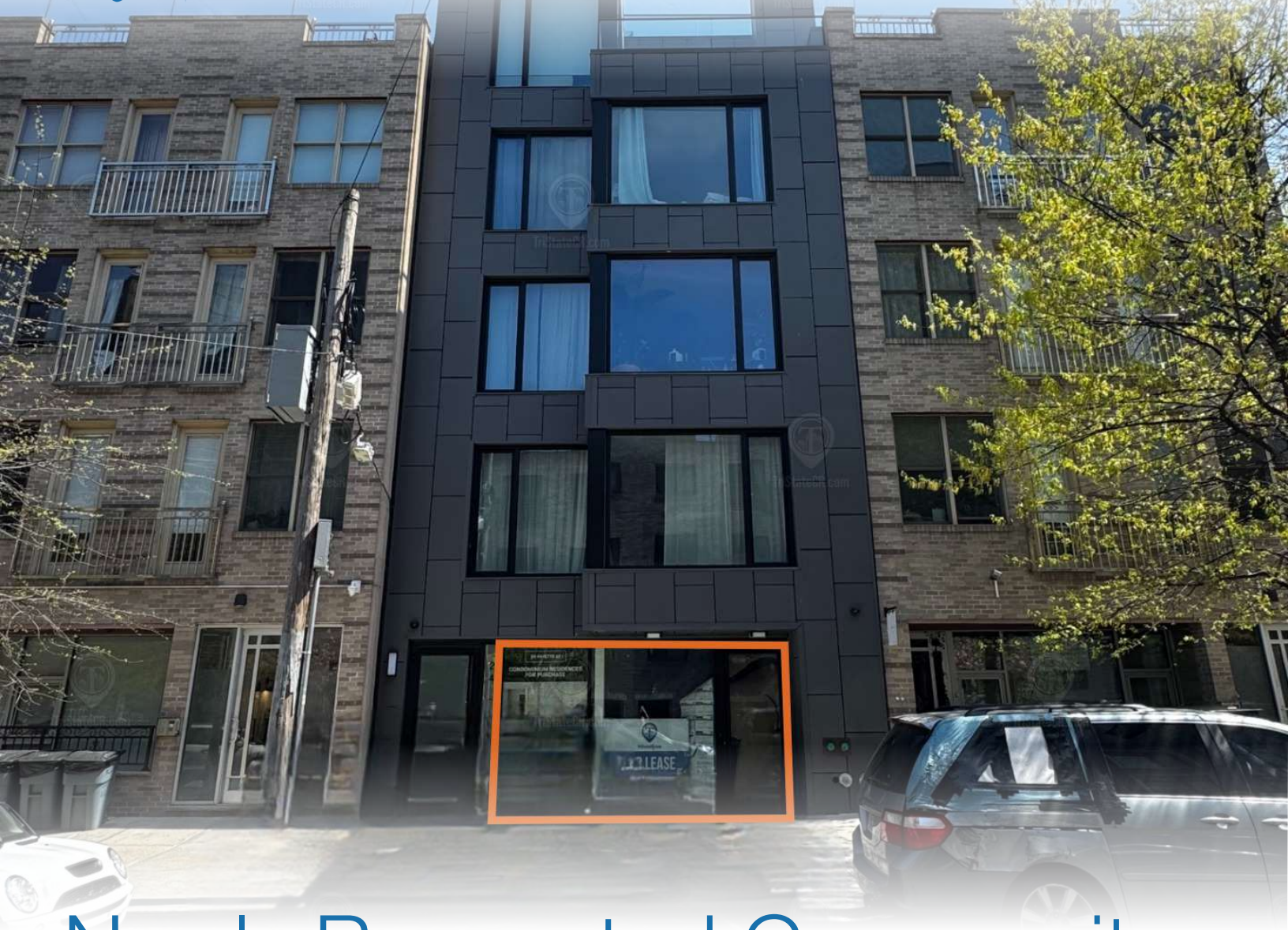




TRI STATE
COMMERCIAL®
REAL ESTATE EXPERTS

For Lease



Newly Renovated Community Facility with Glass Frontage

2,000 SF

24 Fayette St • Brooklyn • NY

For Pricing Call: 718-437-6100

Shlomi Bagdadi
📞 718.437.6100
sb@tristatecr.com

Samuel Shouela
📞 718.437.6100 x212
samuel.s@tristatecr.com



Location Overview

Located in the Bushwick neighborhood of Brooklyn between Beaver St & Broadway near the Flushing Ave subway station.

Nearest Transit: J & M trains at Flushing Ave and the B57, B46, B43, B15, & B47 bus lines.

Nearby tenants include Starbucks, Auntie Anne's, Boost Mobile, Planet Fitness, Walgreens Pharmacy, Foot Locker, Taco Bell / Pizza Hut, IHOP, T-Mobile, TD Bank, Burger King, Popeyes Louisiana Kitchen, Dunkin', AT&T Store, Chase Bank, Planet Fitness, Chipotle Mexican Grill, Cinnabon, Little Caesars Pizza, Woodhull Hospital Emergency Room, and more!

Main Highlights

- ▶ Newly renovated
- ▶ Glass storefront
- ▶ White box
- ▶ Sprinklers



995 SF

Total Building Size



CF

Zoning

FOR LEASE • 2,000 SF • For Pricing

Call: 718-437-6100

Shlomi Bagdadi
☎ 718.437.6100
sb@tristatecr.com

Samuel Shouela
☎ 718.437.6100 x212
samuel.s@tristatecr.com

Broker is relying on Landlord or other Landlord-supplied sources for the accuracy of said information and has no knowledge of the accuracy of it. Broker makes no representation and/or warranty, expressed or implied, as to the accuracy of such information.



TriStateCR.com

Additional Photos

24 Fayette St, Brooklyn, NY 11206



FOR LEASE • 2,000 SF • For Pricing

Call: 718-437-6100

Shlomi Bagdadi
☎ 718.437.6100
sb@tristatecr.com

Samuel Shouela
☎ 718.437.6100 x212
samuel.s@tristatecr.com

Broker is relying on Landlord or other Landlord-supplied sources for the accuracy of said information and has no knowledge of the accuracy of it. Broker makes no representation and/or warranty, expressed or implied, as to the accuracy of such information.



TriStateCR.com

Retailer Map

24 Fayette St, Brooklyn, NY 11206



FOR LEASE • 2,000 SF • For Pricing

Call: 718-437-6100

Shlomi Bagdadi
☎ 718.437.6100
sb@tristatecr.com

Samuel Shouela
☎ 718.437.6100 x212
samuel.s@tristatecr.com

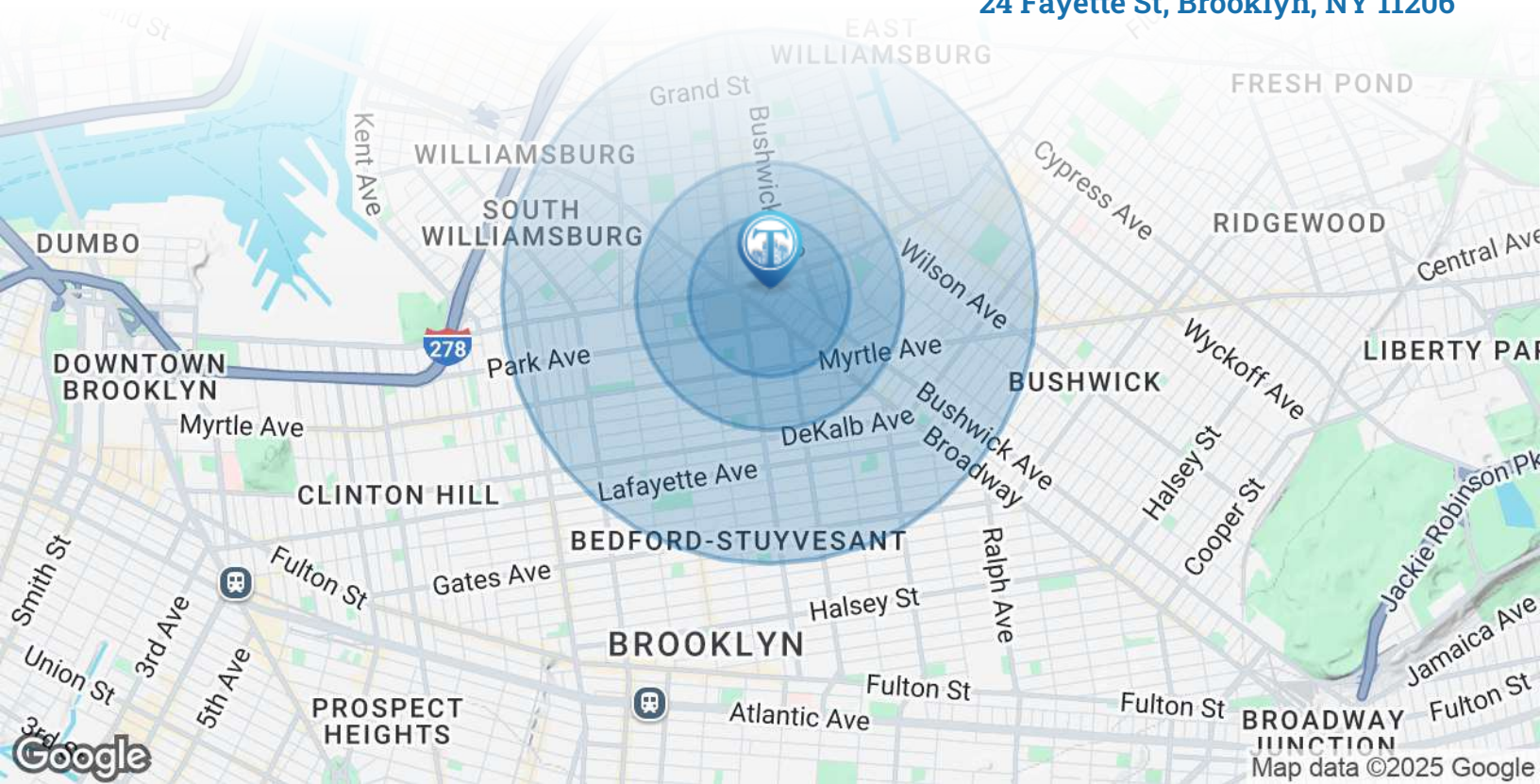
Broker is relying on Landlord or other Landlord-supplied sources for the accuracy of said information and has no knowledge of the accuracy of it. Broker makes no representation and/or warranty, expressed or implied, as to the accuracy of such information.



TriStateCR.com

Area Demographics

24 Fayette St, Brooklyn, NY 11206



POPULATION

0.3 MILES

0.5 MILES

1 MILE

Total Population	15,809	43,479	194,491
Average Age	37	36	34
Average Age (Male)	35	34	33
Average Age (Female)	38	37	35



194,491

People within 1 Mile

HOUSEHOLDS & INCOME

0.3 MILES

0.5 MILES

1 MILE

Total Households	6,319	16,683	70,928
# of Persons per HH	2.5	2.6	2.7
Average HH Income	\$82,766	\$88,426	\$97,936
Average House Value	\$789,650	\$903,095	\$1,106,980



\$97,936

Avg Household Income

FOR LEASE • 2,000 SF • For Pricing

Call: 718-437-6100

Shlomi Bagdadi
 📞 718.437.6100
 sb@tristatecr.com

Samuel Shouela
 📞 718.437.6100 x212
 samuel.s@tristatecr.com

Broker is relying on Landlord or other Landlord-supplied sources for the accuracy of said information and has no knowledge of the accuracy of it. Broker makes no representation and/or warranty, expressed or implied, as to the accuracy of such information.

For Lease



TriStateCR.com

2,000 SF | 24 Fayette Street
Newly Renovated Community
Facility with Glass Frontage for
Lease

2,000 SF • For Pricing **Call: 718-437-6100**

24 Fayette St • Brooklyn • NY

Shlomi Bagdadi
☎ 718.437.6100
sb@tristatecr.com

Samuel Shouela
☎ 718.437.6100 x212
samuel.s@tristatecr.com

SITE SOURCE
RETAIL BROKER NETWORK