

WOODFOREST MEDICAL OFFICE PARK

625 Regal Row | Montgomery TX 77316



Building Features

- 51,450 RSF Office Condos available For Lease or For Sale
- Available Q1 2026
- Suites range from 1,225 to 7,350 SF
- Floor plans offered for medical or office use
- Walking distance to new plaza Pine Market District
- Proximity to rapidly developing city, Magnolia, Texas



Premier Location

Healthcare

71%

Private
Insurance

11k

Healthcare
Spending

86%

Doctor Visits
in 2025

Economics

41

Median
Age

138k

Per Household
Income

Employment

9%

Service
Employment

11%

Blue Collar
Employment

79%

White Collar
Employment

Population

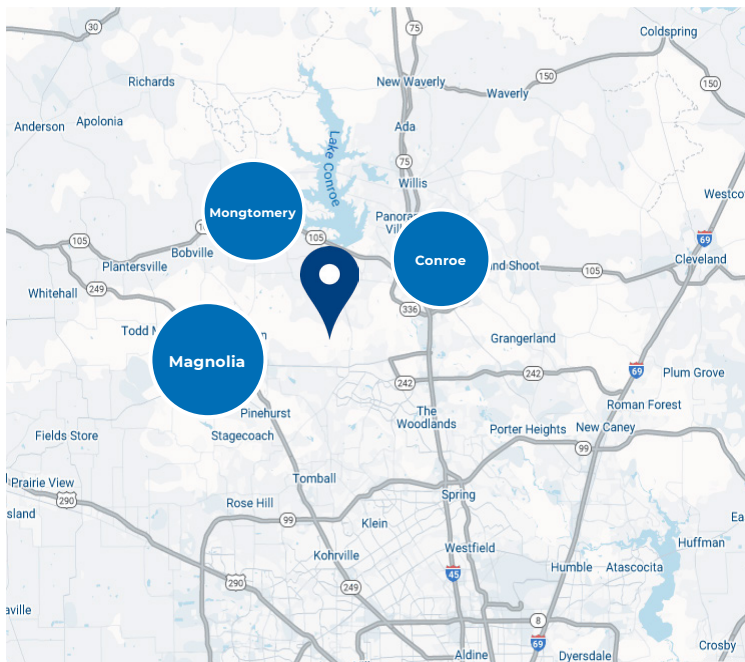
21k

Total
Population

16k

Total Daytime
Population

*Demographics is within 3 miles of the property



Leasing Information:

Sandra Wolters

713.231.1581

Sandra.Wolters@transwestern.com

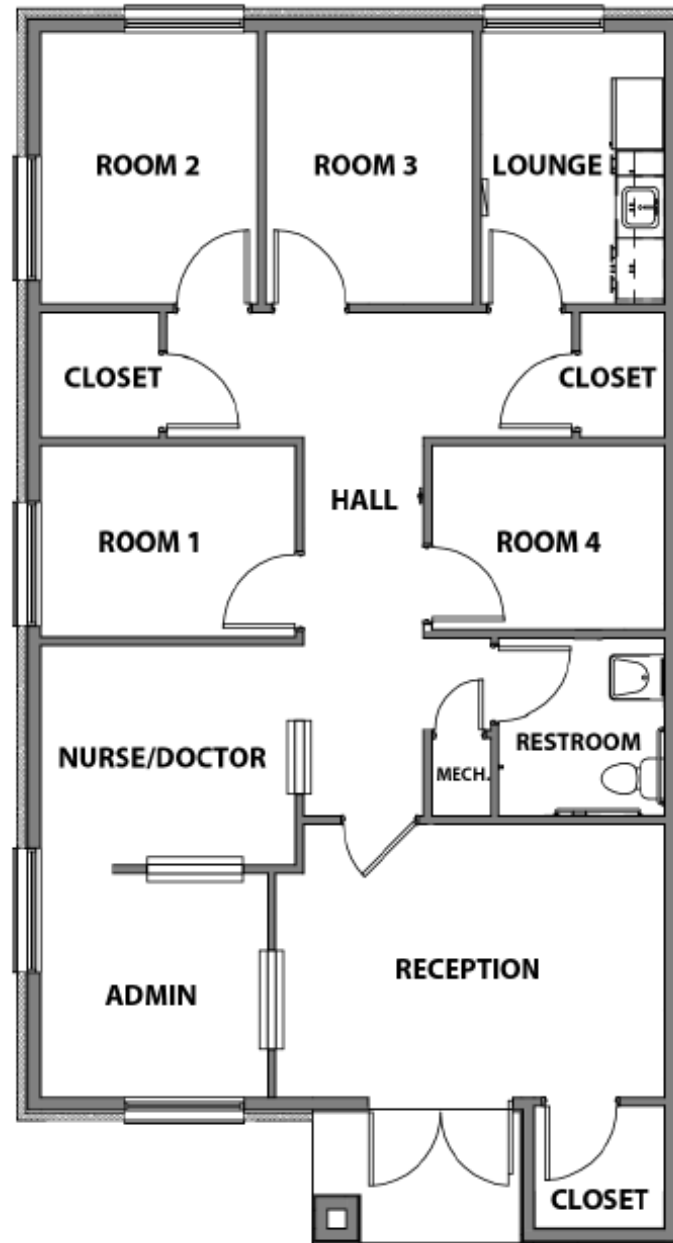
 **TRANSWESTERN**

The information provided herein was obtained from sources believed reliable; however, Transwestern makes no guarantees, warranties or representations as to the completeness of accuracy thereof. The presentation of this property is submitted subject to errors, omissions, change of price or conditions, prior to sale or lease, or withdrawal without notice. Copyright © 2023 Transwestern.

WOODFOREST MEDICAL OFFICE CENTER

625 Regal Row | Montgomery TX 77316

Medical Office Floor Plan 1,225 SF



Leasing Information:

Sandra Wolters

713.231.1581

Sandra.Wolters@transwestern.com

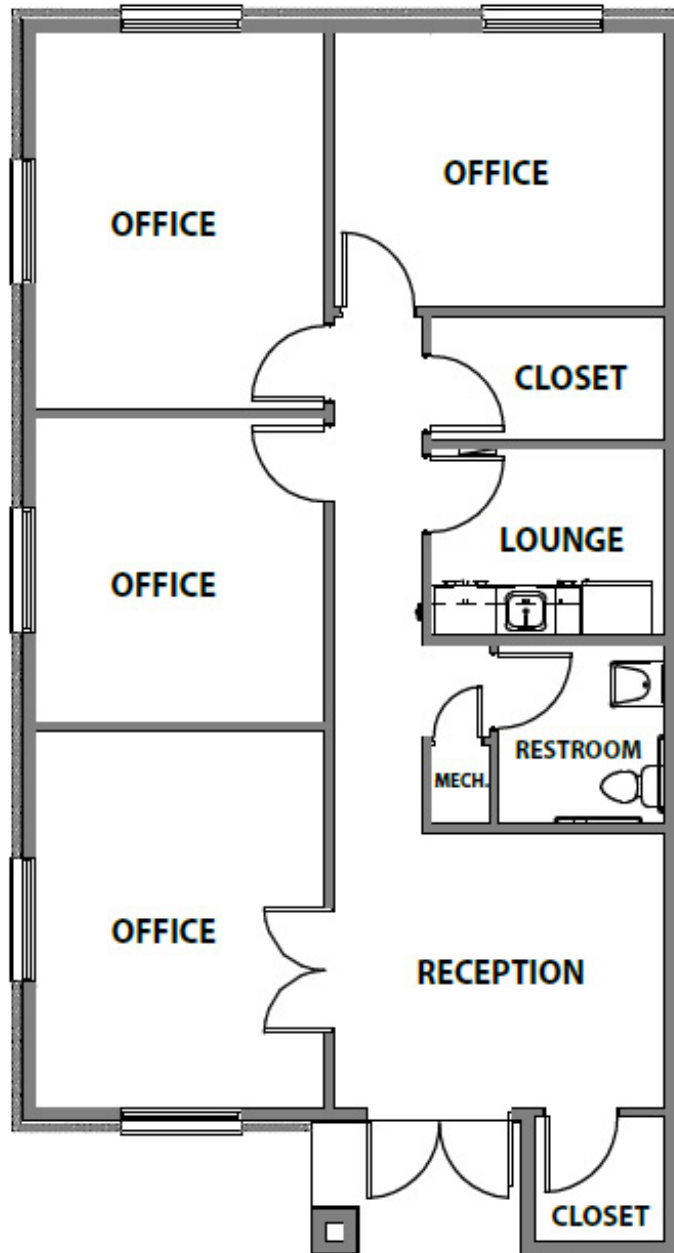


The information provided herein was obtained from sources believed reliable; however, Transwestern makes no guarantees, warranties or representations as to the completeness of accuracy thereof. The presentation of this property is submitted subject to errors, omissions, change of price or conditions, prior to sale or lease, or withdrawal without notice. Copyright © 2023 Transwestern.

WOODFOREST MEDICAL OFFICE CENTER

625 Regal Row | Montgomery TX 77316

Standard Floor Plan 1,225 SF



Leasing Information:

Sandra Wolters

713.231.1581

Sandra.Wolters@transwestern.com



WOODFOREST MEDICAL OFFICE CENTER

625 Regal Row | Montgomery TX 77316

Site Plan



Leasing Information:

Sandra Wolters

713.231.1581

Sandra.Wolters@transwestern.com



The information provided herein was obtained from sources believed reliable; however, Transwestern makes no guarantees, warranties or representations as to the completeness of accuracy thereof. The presentation of this property is submitted subject to errors, omissions, change of price or conditions, prior to sale or lease, or withdrawal without notice. Copyright © 2023 Transwestern.