

# THE SCHROEDER BUILDING

*For Lease: ±3,824 - ±10,228 SF of Available Office Space*

234 FRONT STREET  
SAN FRANCISCO, CA 94111

Prime Financial District location

Four minute walk to the Embarcadero BART station and eight minute walk to the Ferry Building

Located within the potential "entertainment zone" with multiple bars/restaurants on the same block

## CAMERON SHAFER

415.229.8980 | [cameron.shafer@kidder.com](mailto:cameron.shafer@kidder.com)

LIC N° 01945141

## MICHAEL GSCHWEND

415.229.8908 | [michael.gschwend@kidder.com](mailto:michael.gschwend@kidder.com)

LIC N° 01406626

## BLAKE LUGAR

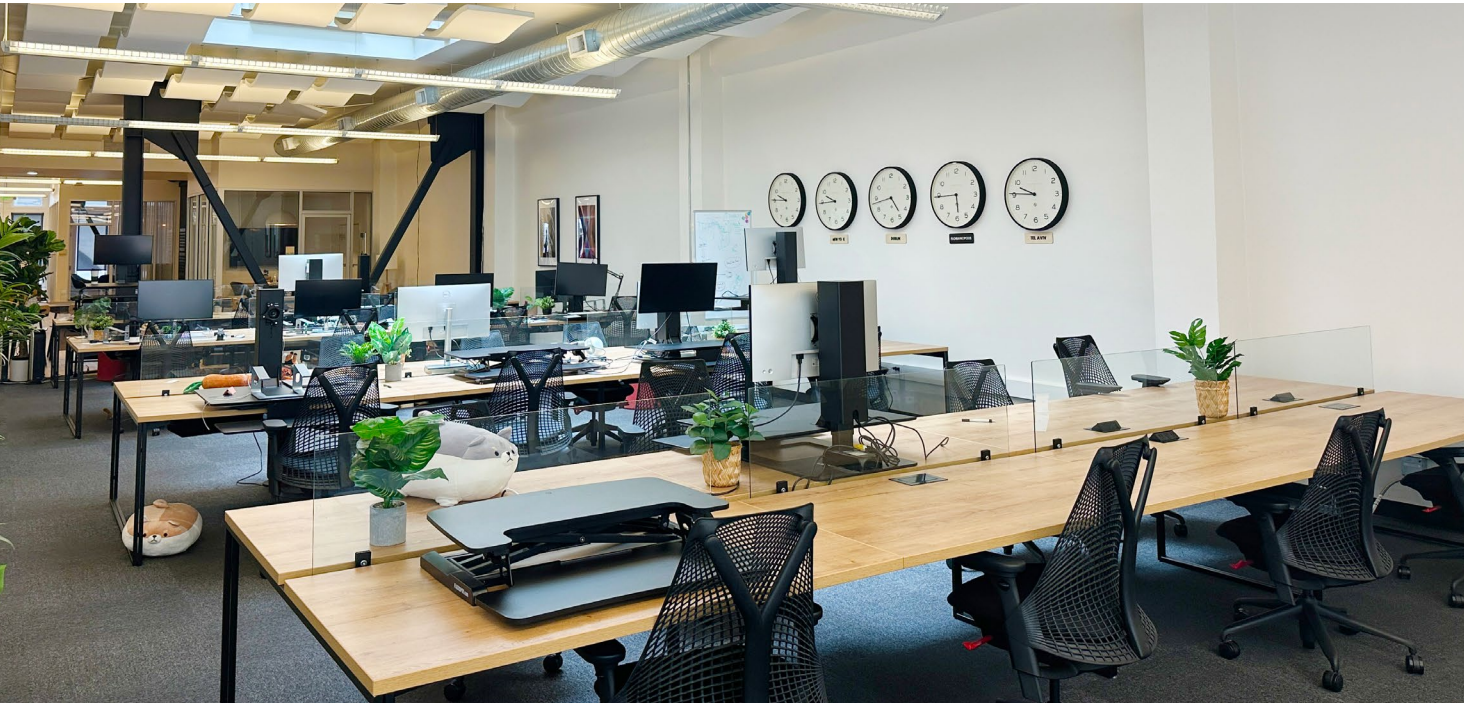
415.229.8982 | [blake.lugar@kidder.com](mailto:blake.lugar@kidder.com)

LIC N° 01848972

KIDDER.COM

This information supplied herein is from sources we deem reliable. It is provided without any representation, warranty, or guarantee, expressed or implied as to its accuracy. Prospective Buyer or Tenant should conduct an independent investigation and verification of all matters deemed to be material, including, but not limited to, statements of income and expenses. Consult your attorney, accountant, or other professional advisor.





## SUITE 200

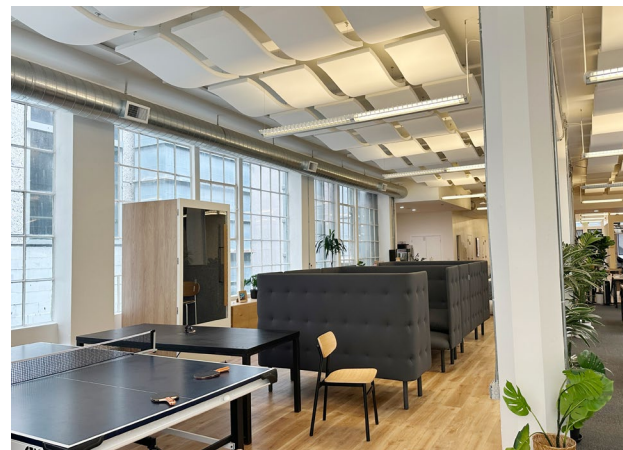
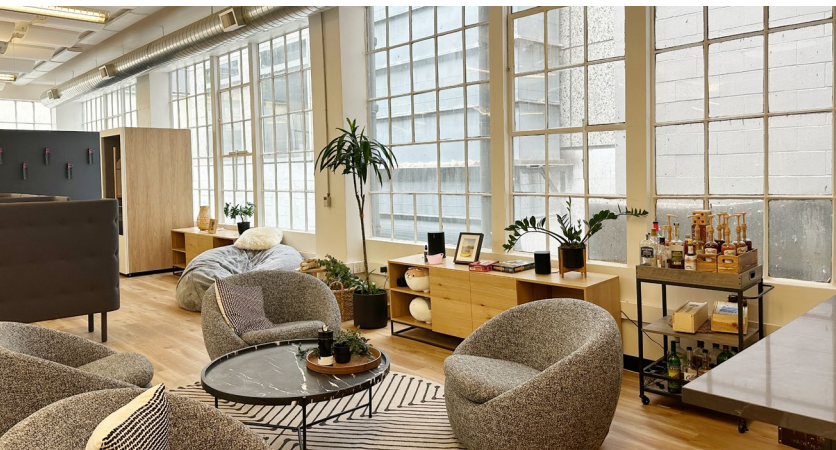
Available March 1, 2025

One (1) boardroom, two (2) medium conference rooms, two (2) breakout rooms, One (1) full kitchen

Ample soft seating and collaboration area

FF&E potentially available

Full floor identity



*\$48/SF IG*

LEASE RATE

*±6,404 RSF*

AVAILABLE

[KIDDER.COM](http://KIDDER.COM)

This information supplied herein is from sources we deem reliable. It is provided without any representation, warranty, or guarantee, expressed or implied as to its accuracy. Prospective Buyer or Tenant should conduct an independent investigation and verification of all matters deemed to be material, including, but not limited to, statements of income and expenses. Consult your attorney, accountant, or other professional advisor.

# SUITE 200 FLOOR PLAN



*±6,404 RSF*

AVAILABLE

*3/1/2025*

AVAILABLE

*\$48/SF IG*

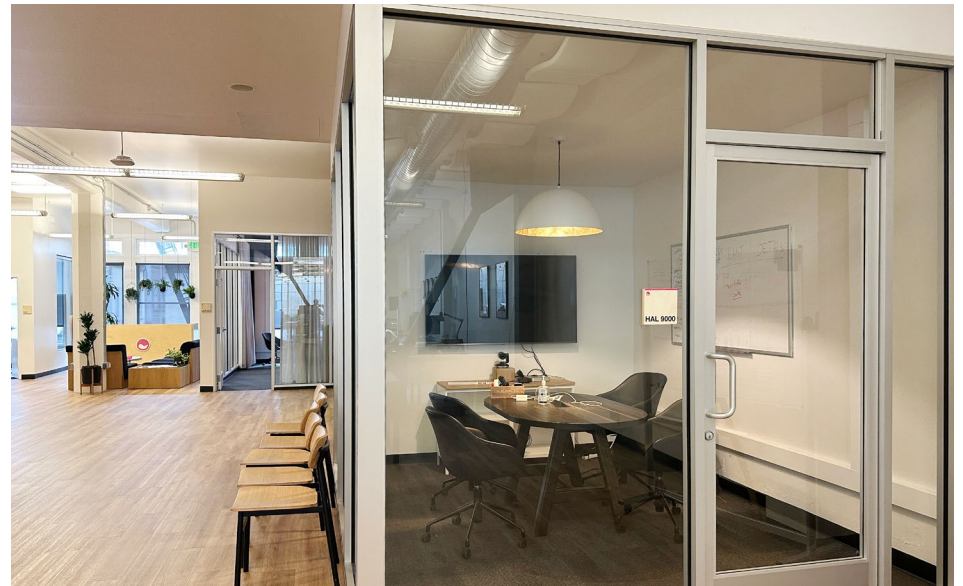
LEASE RATE

FLOOR PLAN NOT TO SCALE

[KIDDER.COM](http://KIDDER.COM)

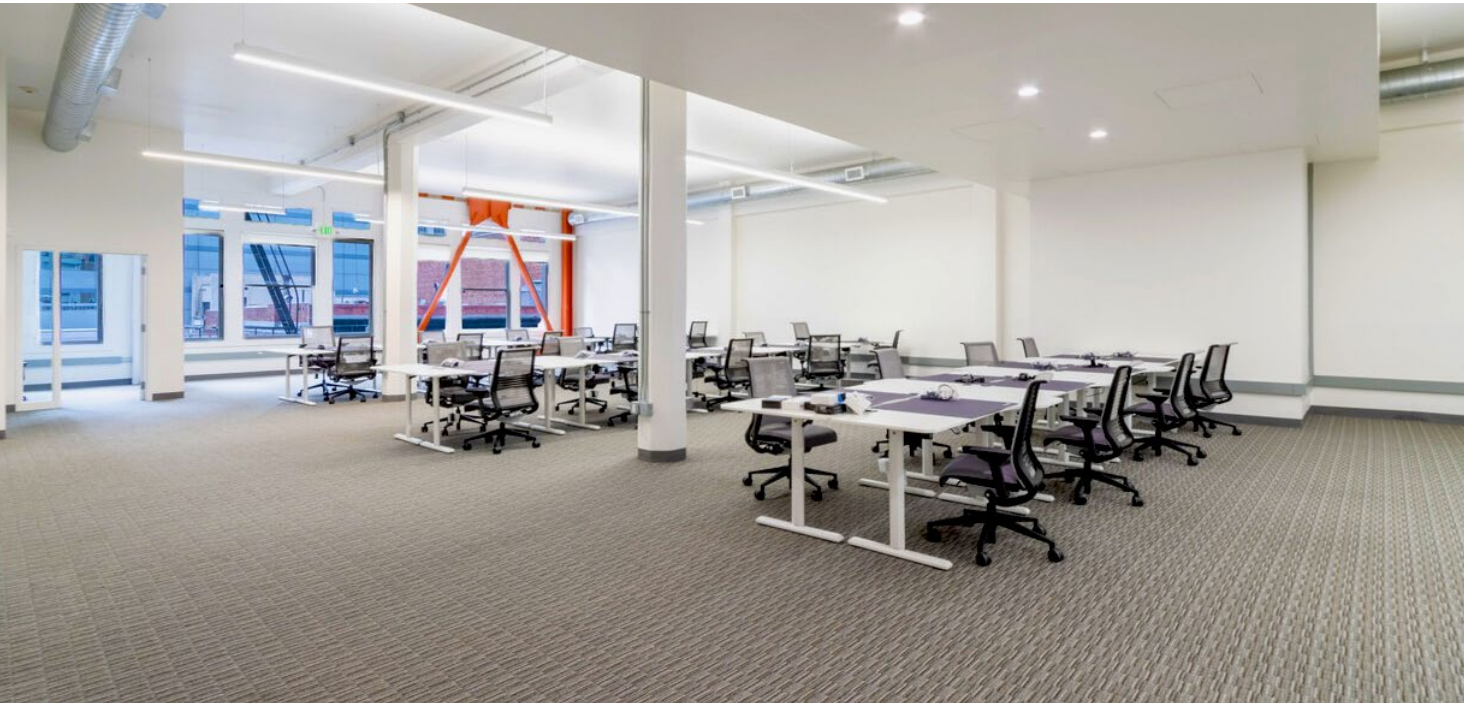
This information supplied herein is from sources we deem reliable. It is provided without any representation, warranty, or guarantee, expressed or implied as to its accuracy. Prospective Buyer or Tenant should conduct an independent investigation and verification of all matters deemed to be material, including, but not limited to, statements of income and expenses. Consult your attorney, accountant, or other professional advisor.

# SUITE 200



[KIDDER.COM](http://KIDDER.COM)

This information supplied herein is from sources we deem reliable. It is provided without any representation, warranty, or guarantee, expressed or implied as to its accuracy. Prospective Buyer or Tenant should conduct an independent investigation and verification of all matters deemed to be material, including, but not limited to, statements of income and expenses. Consult your attorney, accountant, or other professional advisor.



## SUITE 300

One (1) boardroom, two (2) offices,  
kitchenette

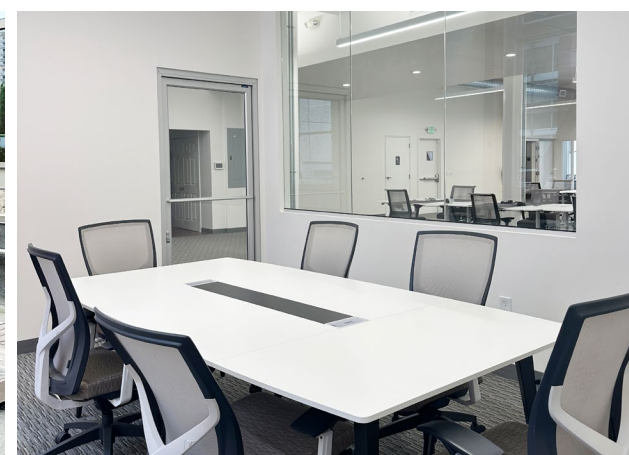
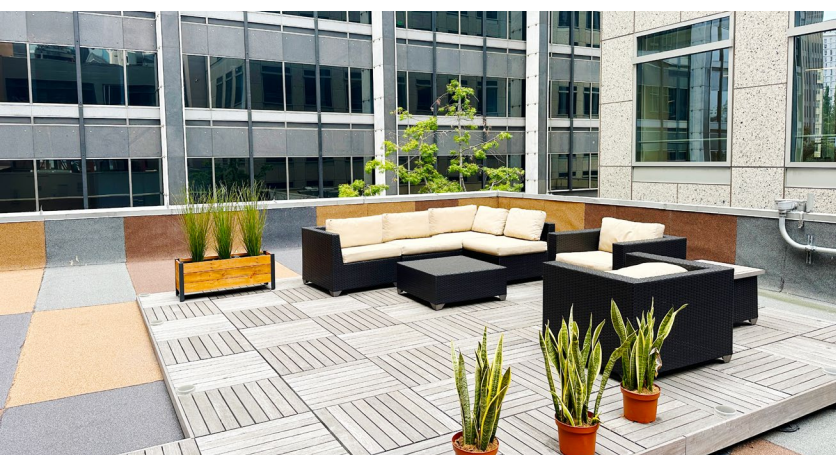
Twenty-eight (28) sit-stand desks

Soaring ceilings with ample of  
natural light

Private outdoor patio

Full floor identity

Mid \$40s IG



*NOW*

AVAILABLE

*±3,824 RSF*

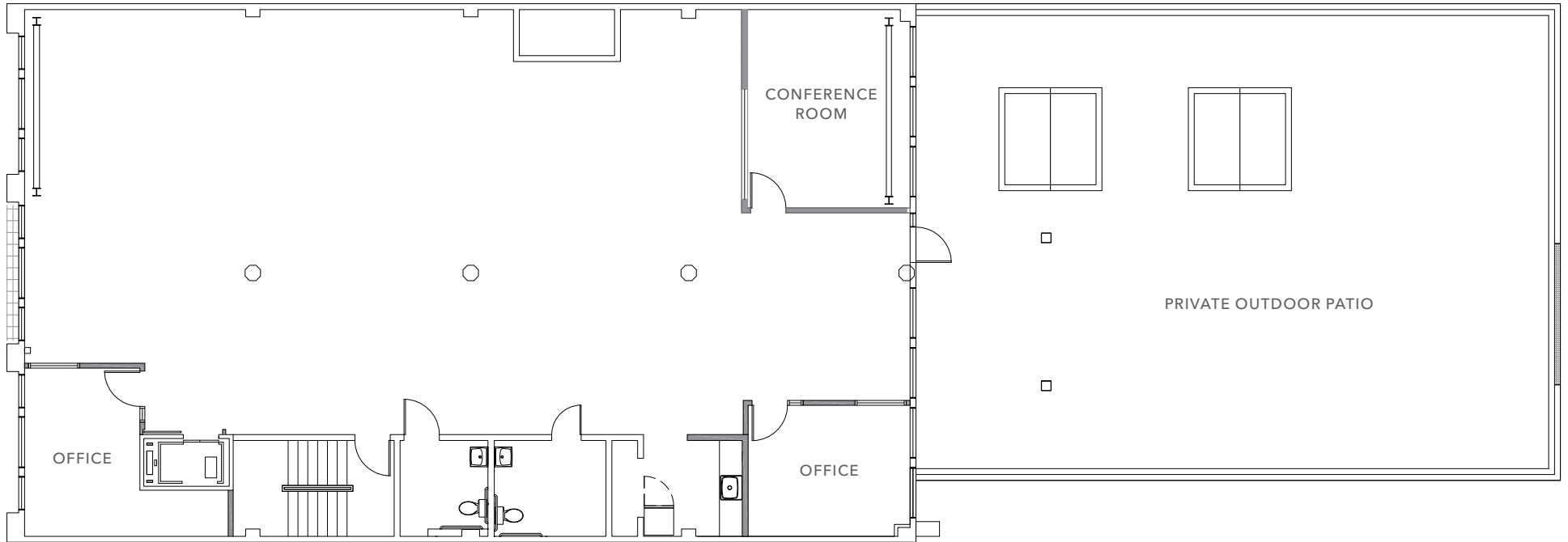
AVAILABLE

[KIDDER.COM](http://KIDDER.COM)

This information supplied herein is from sources we deem reliable. It is provided without any representation, warranty, or guarantee, expressed or implied as to its accuracy. Prospective Buyer or Tenant should conduct an independent investigation and verification of all matters deemed to be material, including, but not limited to, statements of income and expenses. Consult your attorney, accountant, or other professional advisor.



# SUITE 300 FLOOR PLAN



*±3,824 RSF*

AVAILABLE

*NOW*

AVAILABLE

*Mid \$40s IG*

LEASE RATE

FLOOR PLAN NOT TO SCALE

[KIDDER.COM](http://KIDDER.COM)

This information supplied herein is from sources we deem reliable. It is provided without any representation, warranty, or guarantee, expressed or implied as to its accuracy. Prospective Buyer or Tenant should conduct an independent investigation and verification of all matters deemed to be material, including, but not limited to, statements of income and expenses. Consult your attorney, accountant, or other professional advisor.



# SUITE 300



[KIDDER.COM](http://KIDDER.COM)

This information supplied herein is from sources we deem reliable. It is provided without any representation, warranty, or guarantee, expressed or implied as to its accuracy. Prospective Buyer or Tenant should conduct an independent investigation and verification of all matters deemed to be material, including, but not limited to, statements of income and expenses. Consult your attorney, accountant, or other professional advisor.



# THE SCHROEDER BUILDING



KIDDER.COM

This information supplied herein is from sources we deem reliable. It is provided without any representation, warranty, or guarantee, expressed or implied as to its accuracy. Prospective Buyer or Tenant should conduct an independent investigation and verification of all matters deemed to be material, including, but not limited to, statements of income and expenses. Consult your attorney, accountant, or other professional advisor.

