

FULLY FURNISHED PLUG & PLAY FOR LEASE

# 205

## LOWELL STREET

WILMINGTON, MASSACHUSETTS



# 205 LOWELL STREET

Wilmington, Massachusetts



## BUILDING SPECIFICATIONS

**BUILDING SIZE:** 123,000 SF

**AVAILABLE SF:** Floor 1: 14,000 RSF  
Floor 2: 28,000 SF

**PROPERTY TYPE:** Office/Flex use

**YEAR BUILT:** 1960 / Renovated 2019

**ZONING:** General Industrial (GI)

**RE TAXES/CAM:** \$2.62/ SF (RE Tax)  
\$3.35/SF (CAM)

**LOADING:** One (1) Tailboard  
Grade Level access

**FLOORS:** 2

**CLEAR HEIGHT:** 14'

**PARKING:** 3.00/1,000 SF ( 360 spaces)

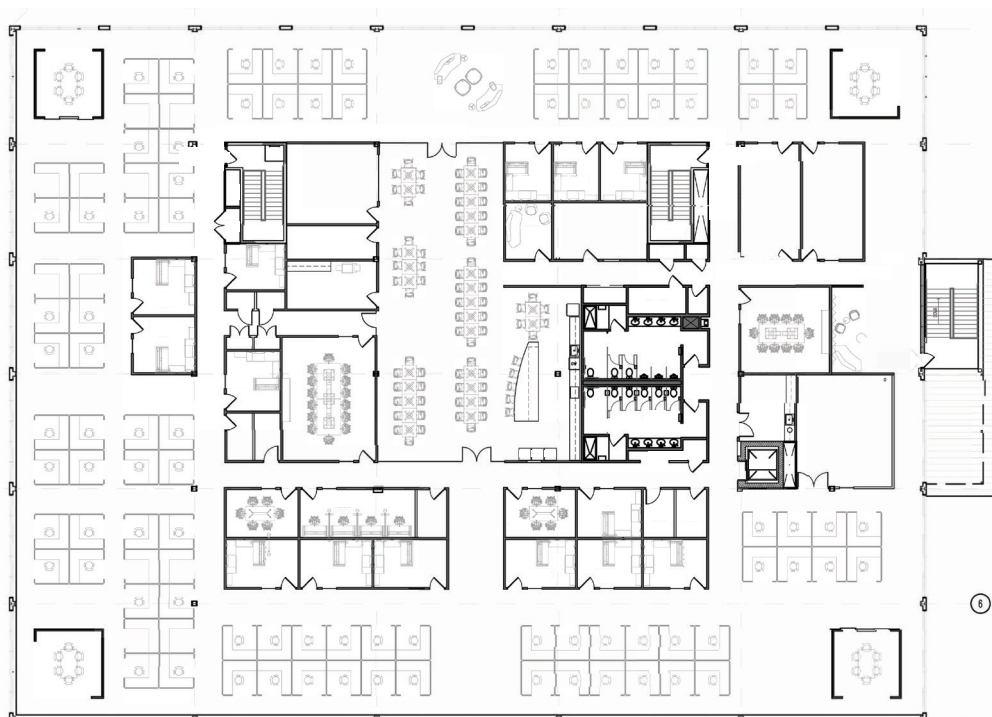
**POWER:** 1,200 Amps/ 3 Phase/ 4 Wire

**HVAC:** 117 tons

FLOOR 1 | **14,000 RSF**



FLOOR 2 | **28,000 RSF**





### CONTACT US TO ARRANGE A TOUR

**CHRIS CURLEY**

617.457.3211

ccurley@hunnemanre.com

**MICHAEL ALLEN**

617.457.3276

mallen@hunnemanre.com

**KEN OPPENHEIM**

617.457.3301

koppenheim@hunnemanre.com



303 Congress Street, Boston, MA 02210 | 617.457.3400 | [www.hunnemanre.com](http://www.hunnemanre.com)

@2025 Hunneman. All rights reserved. All information has been obtained from sources believed reliable but no warranty or representation is verified for accuracy or completeness. Caution and independent investigation of property and information should be verified. Reliance on this information is at your own risk.