

**BARTLETT OFFICE COMPLEX**  
**2,367 – 13,750 SF AVAILABLE**

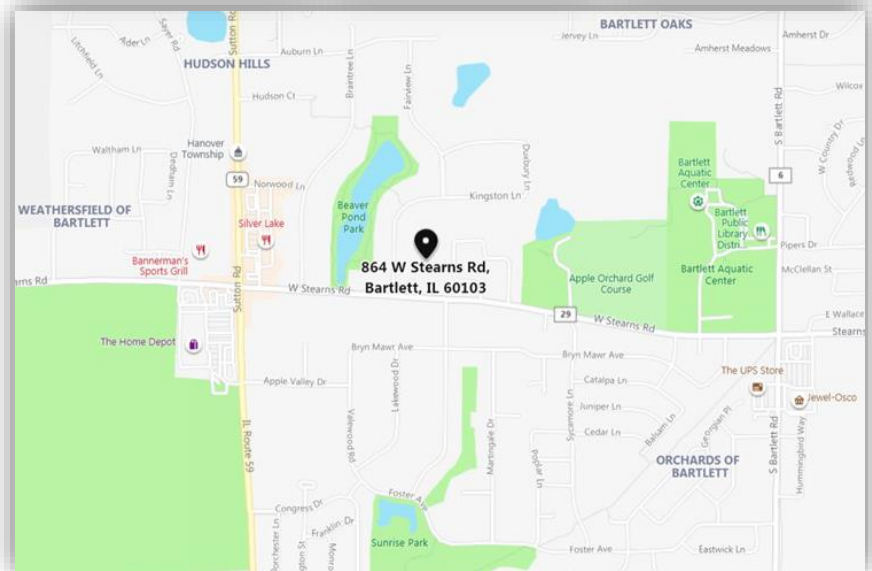


## PROPERTY HIGHLIGHTS

- 2,367 – 13,750 RSF Contiguous
- 1<sup>st</sup> Floor Space
  - Suite 102: 4,126 SF
  - Suite 103: 2,367 SF
  - Suite 106: 2,908 SF
  - Raw Space: 2,714 SF
- Asking Rent: \$23.00 PSF Gross
- Lease Expiration: March 31, 2029  
*Lease Term is Negotiable*

## PROPERTY AMENITIES

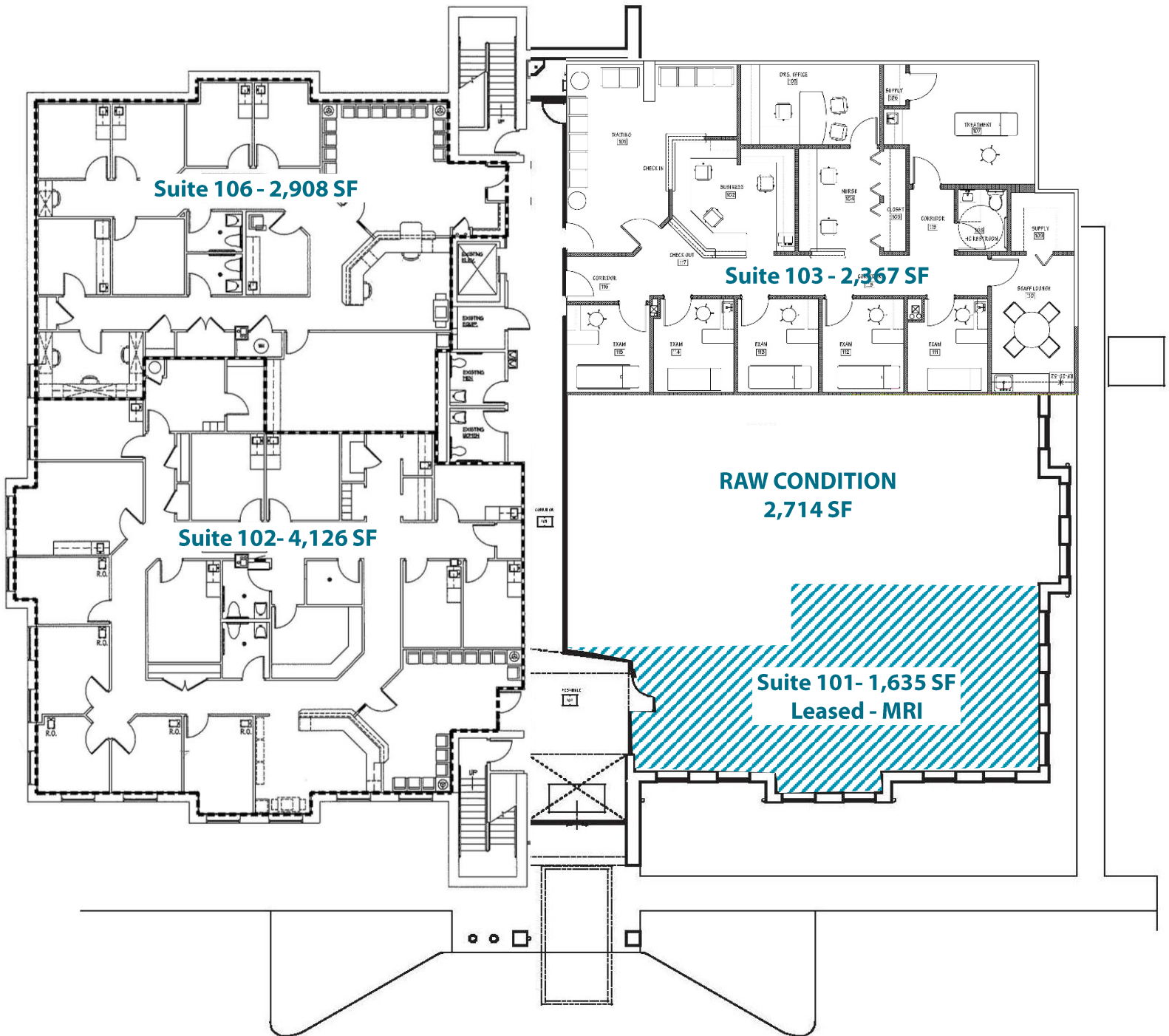
- Medical Office Building
- 30,000 SF RBA
- Year Built: 2006
- Parking Ratio: 6.07/1,000 SF



**James P. Ward**  
 Senior Director

+1 847 518 3206  
[jim.ward@cushwake.com](mailto:jim.ward@cushwake.com)

9500 W. Bryn Mawr Avenue  
 Suite 600  
 Rosemont, IL 60018  
 phone: +1 847 518 9100



**James P. Ward**  
Senior Director

+1 847 518 3206  
jim.ward@cushwake.com

9500 W. Bryn Mawr Avenue  
Suite 600  
Rosemont, IL 60018  
phone: +1 847 518 9100