

# OFFICES FOR LEASE

351 WEST JEFFERSON BOULEVARD



**JIM LAKE**  
ADAPTIVE URBAN REDEVELOPMENT



**SUZY FEATHERSTON**  
sfeatherston@jimlakeco.com

**BRENNAN FOLSE**  
bfolse@jimlakeco.com

 214.741.5018

The information contained herein has been given to us by the property owner or obtained from sources that we deem reliable, however, Jim Lake Companies makes no guarantees, warranties, or representations as to the completeness or accuracy thereof. The presentation is submitted subject to errors, omissions, change of price, or conditions prior to sale, lease, or withdrawal, without notice.



# PROPERTY SUMMARY

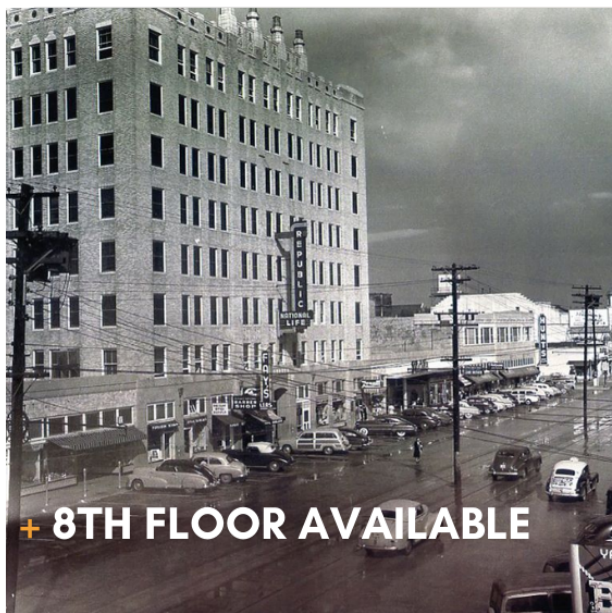
**ADDRESS** 351 WEST JEFFERSON BOULEVARD

**PRICE** CALL FOR PRICING

**TYPE** OFFICE SPACE

**PARKING** SURFACE LOT / STREET PARKING

The historic Jefferson Tower was built-in 1928 when it was known as the Medical-Dental Building. Its main tower was the first high-rise built-in Oak Cliff and was a pioneer of economic development at the time. The tower is eight stories high and includes two retail wings on each side. The lobby ceiling still boasts the original stucco artwork. The building takes up the entire block from Bishop Avenue to Madison Avenue, and from Jefferson Boulevard to Sunset Avenue. It is now home to many notable retailers, including the famous Tex-Mex restaurant Gonzalez, a vegan taco bar Casa del Vegano, and a cool market space with artisans, and much more. The top floor of the tower serves as an event center and the second floor on both retail wings houses loft spaces for creatives.



## RETAIL

OCHO LATIN CUISINE  
GONZALEZ TEX-MEX  
CASA DEL VEGANO  
SALVATION TATTOO  
ROSSY JEWELRY

NOLA SNOBALLS  
TROMPO TACOS  
LA PESCA  
YUYU

## OFFICE TENANTS INCLUDE

ACCOUNTANTS, ARCHITECTS,  
PHOTOGRAPHERS, LOGISTICS AND  
FAMILY OFFICES



**MONTHLY**  
**INCUBATOR SPACES**  
*\*Flexible Terms\**

## FEATURES

- + Newly Renovated Historic Building
- + High-Speed Internet
- + Exposed Ceilings
- + Conference Room
- + Terrazzo Floors Common Areas
- + Lounge with Coffee Bar & Vending
- + Surface Parking Lot
- + Doorman / Security

# 3

## 3RD FLOOR

- 653 SF
- 1,044 SF
- 1,206 SF
- 1,089 SF



# 4

## 4TH FLOOR

- 699 SF
- 1,492 SF
- 951 SF
- 854 SF
- 721 SF



# 5

## 5TH FLOOR

4,717 SF

*Build-to-Suit*



# 6

## 6TH FLOOR

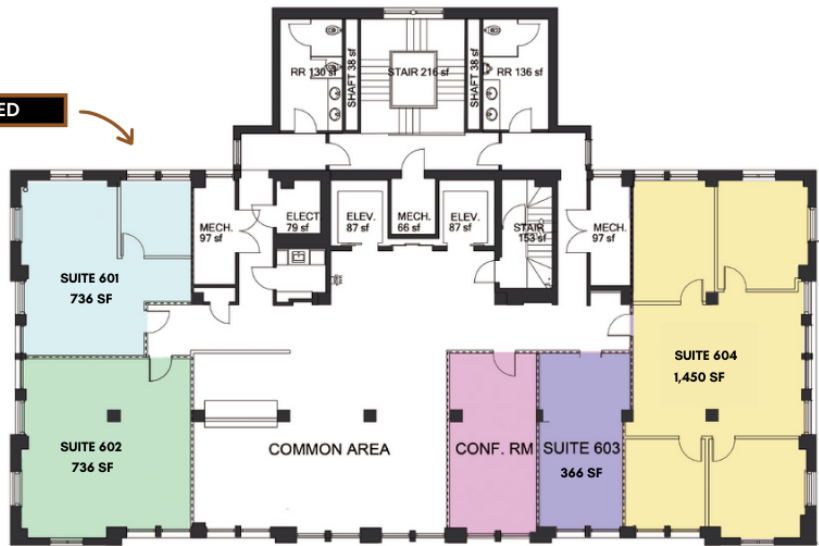
366 SF  
1,450 SF

*Tenant Lounge +  
Conference Room*

LEASED

LEASED

LEASED



# 7

## 7TH FLOOR

1,007 SF  
1,421 SF  
970 SF

LEASED



**8TH FLOOR AVAILABLE!**

**5,893 SF**

- + Open Concept
- + Amazing Views
- + Plus Storage and Small Offices