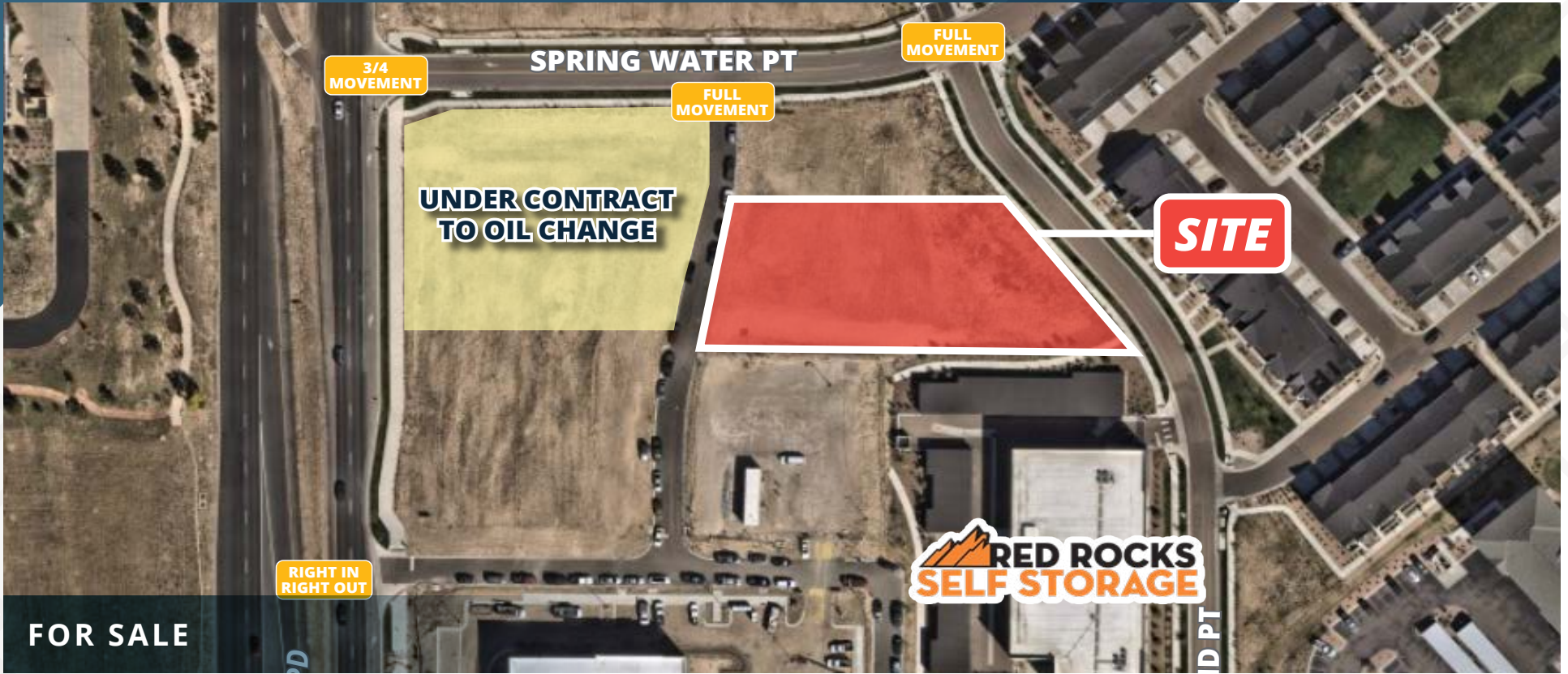


# Build-Ready Pad Site at Victory Ridge

White Diamond Pt | Colorado Springs, CO 80908



## PROPERTY SIZE

0.50 AC

## PRICING

\$400,000

## CITY/COUNTY

Colorado Springs/El Paso

## ZONING

PDZ

## ABOUT THE PROPERTY

- Rare opportunity to purchase small acreage in a major commercial development and save on land acquisition cost.
- Regional detention and interior access roads in place.
- Property is rough graded.

## CONTACT

**Tony Pierangeli** | 303.390.5257 | [tony.pierangeli@srsre.com](mailto:tony.pierangeli@srsre.com)

**Patrick McGlinchey** | 210.303.3149 | [patrick.mcglinchey@cushwake.com](mailto:patrick.mcglinchey@cushwake.com)

**Justin Gregory** | 303.803.7170 | [justin.gregory@cushwake.com](mailto:justin.gregory@cushwake.com)

## DEMOGRAPHICS

	1 Mile	3 Miles	5 Miles
Population	6,175	40,841	127,632
Daytime Population	9,588	62,325	141,286
Avg. Household	\$171,626	\$167,807	\$154,255
Estimated House-	2,638	15,325	46,884

Year: 2025 | Source: esri





3/4  
MOVEMENT

SPRING WATER PT

FULL  
MOVEMENT

FULL  
MOVEMENT

UNDER CONTRACT  
TO CHANGE



**SRS Real Estate Partners**  
1875 Lawrence Street, Suite 850  
Denver, CO 80202  
303.572.1800

**Tony Pierangeli**  
303.390.5257  
tony.pierangeli@srsre.com



**Patrick McGlinchey**  
210.303.3149  
patrick.mcglinchey@cushwake.com

**Justin Gregory**  
303.803.7170  
justin.gregory@cushwake.com

RIGHT IN  
RIGHT OUT



**SRSRE.COM**

© SRS Real Estate Partners

The information presented was obtained from sources deemed reliable;  
however SRS Real Estate Partners does not guarantee its completeness or accuracy.