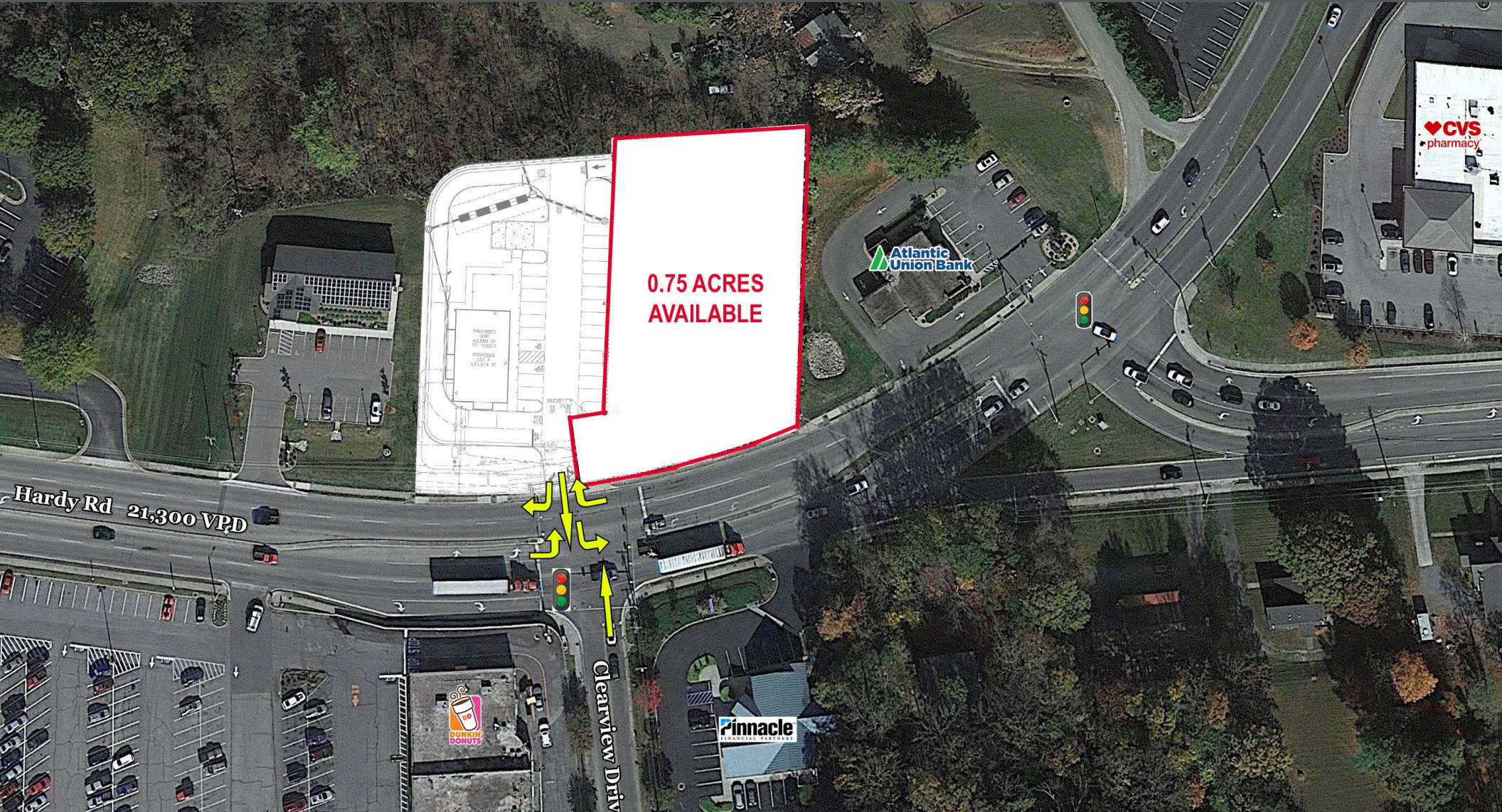


1000 HARDY ROAD

Vinton, VA 24179

GROUND LEASE OR BUILD-TO-SUIT



ERIC STANLEY
First Vice President
eric.stanley@thalhimer.com
757 499 2739

DAVID MACHUPA
Senior Vice President
david.machupa@thalhimer.com
757 213 4156

Town Center of Virginia Beach
222 Central Park Avenue, Suite 1500
Virginia Beach, VA 23462
thalhimer.com

1000 HARDY ROAD

Vinton, VA 24179

GROUND LEASE OR BUILD-TO-SUIT

PROPERTY FEATURES

- Submarket of Roanoke
- 3 miles to downtown Roanoke
- Signalized intersection
- 21,300 VPD on Hardy Road
- Approximately $\frac{3}{4}$ of an acre available
- Immediate availability

Nearby Retailers



AREA DEMOGRAPHICS

	POPULATION	AVERAGE HOUSEHOLD INCOME	DAYTIME POPULATION
1 Mile	7,291	\$111,274	8,058
3 Miles	63,739	\$97,059	53,347
5 Miles	143,485	\$96,921	137,702

