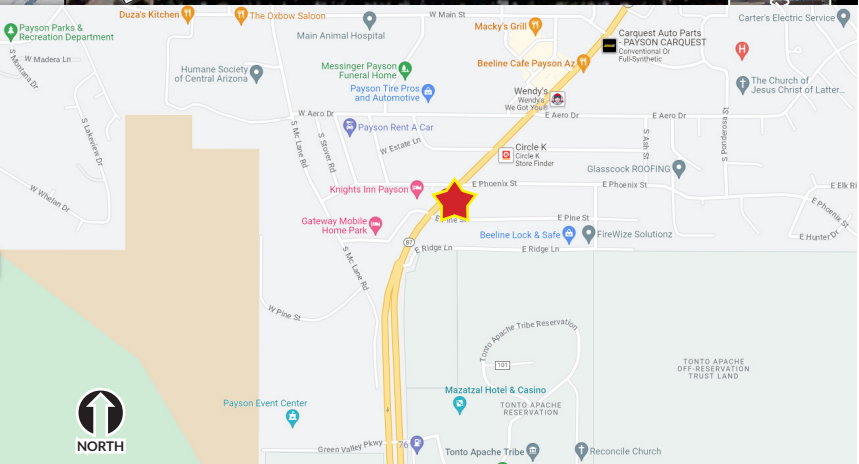
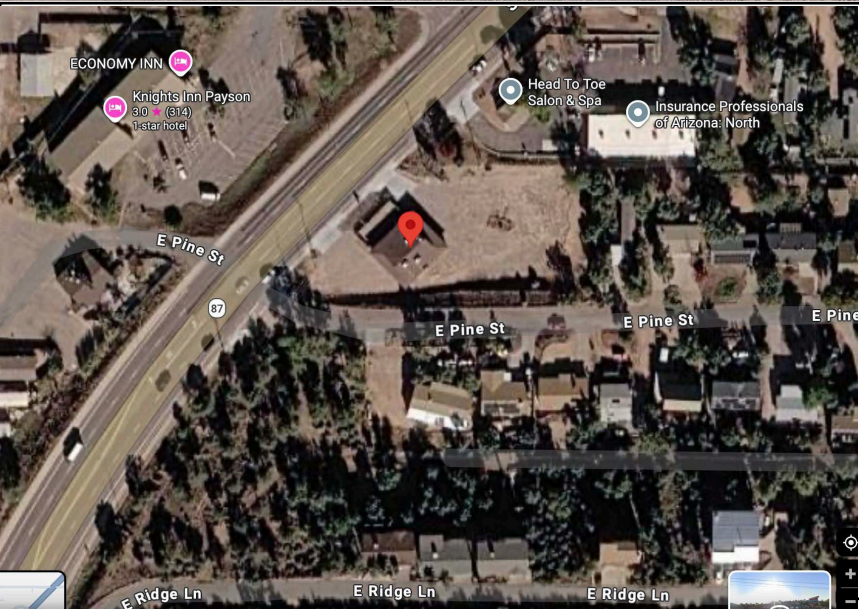


FOR SALE, FOR LEASE, GROUND LEASE

RISE 24
REAL ESTATE

1111 S Beeline Hwy • Payson, Arizona

FOR SALE: \$1,500,000.00 OR RENT NEGOTIABLE



PROPERTY OVERVIEW

- ± 2,755 SF Freestanding building with two (2) bathrooms and 7 Water credits
- Fully built-out restaurant space with sit-down format
- Some restaurant equipment included: kitchen exhaust hood (2013) and refrigerators
- Front Deck for outdoor entertainment (50' x 25')
- Additional ± 245 SF outside storage space
- Ample Parking: 50+ spaces
- Parcel Size: ± 0.75 AC
- Zoning: C-2, Commercial
- Uses: Restaurant, Retail, Office
- Building was completely rebuilt in 1993; updates in 2009, new exhaust hood 2013, various updates 2013-PRESENT

- Frontage to Beeline Highway in Payson, Arizona
 - BILLBOARD ON PROPERTY-LONG-TERM LEASE IN PLACE
- ## AREA HIGHLIGHTS

- First building in town after the casino on the main Highway 87
- Across from the rodeo grounds, movie theater, and casino
- Close proximity to two (2) hotels
- North of Payson Event Center
- Will benefit from the Tonto Apache Tribe's entertainment district *once completed*
- Payson hosts the World's Oldest Continuous Rodeo, established in 1884 and the Old Time Fiddlers Contest which celebrates the area's musical heritage
- <https://apachecorners.com> - TRIBE PROJECT DETAILS

RISE 24
REAL ESTATE

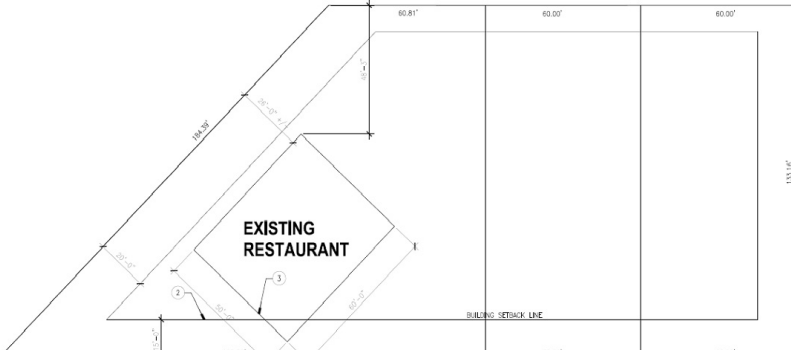
Chantel Gutierrez-
Davis
480.636.9896
chantel@rise24re.com



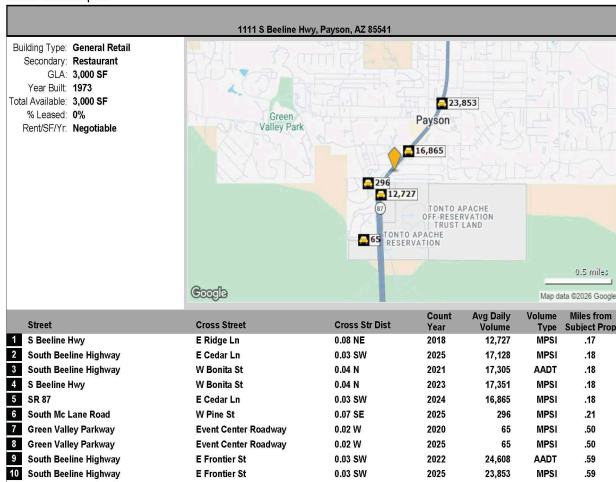
LAND LEASE ± 0.75 AC WITH BUILDING

1111 S Beeline Hwy • Payson, Arizona

LEASE RENT NEGOTIABLE. UP TO 6 MONTHS FREE RENT



Traffic Count Report

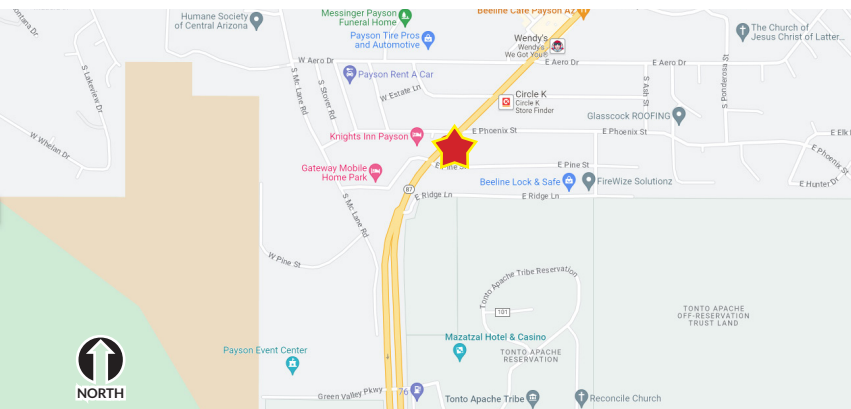


PROPERTY OVERVIEW

- ± 2,755 SF Freestanding building with two (2) bathrooms
- Fully built-out restaurant space with sit-down format
- Some restaurant equipment included: kitchen exhaust hood (2013) and refrigerators
- Front Deck for outdoor entertainment (50' x 25')
- Additional ± 245 SF outside storage space
- Ample Parking: 50 spaces
- Parcel Size: ± 0.75 AC
- Zoning: C-2, Commercial
- Uses: Restaurant, Retail, Office
- Building was completely rebuilt in 1993; updates in 2009; new roof 2012, new exhaust hood 2013, various updates 2013-16
- Frontage to Beeline Highway in Payson, Arizona

AREA HIGHLIGHTS

- First building in town after the casino on the main Highway 87
- Across from the rodeo grounds, movie theater, and casino
- Close proximity to two (2) hotels
- North of Payson Event Center
- Will benefit from the Tonto Apache Tribe's entertainment district
- Payson hosts the World's Oldest Continuous Rodeo, established in 1884 and the Old Time Fiddlers Contest which celebrates the area's musical heritage



Chantel Gutierrez-Davis
 480.636.9896
 chantel@rise24re.com