

1210-1280 SOUTER BLVD.
UNIT: #1260
TROY, MICHIGAN

HI-TECH FOR LEASE
3,200 Square Feet Available



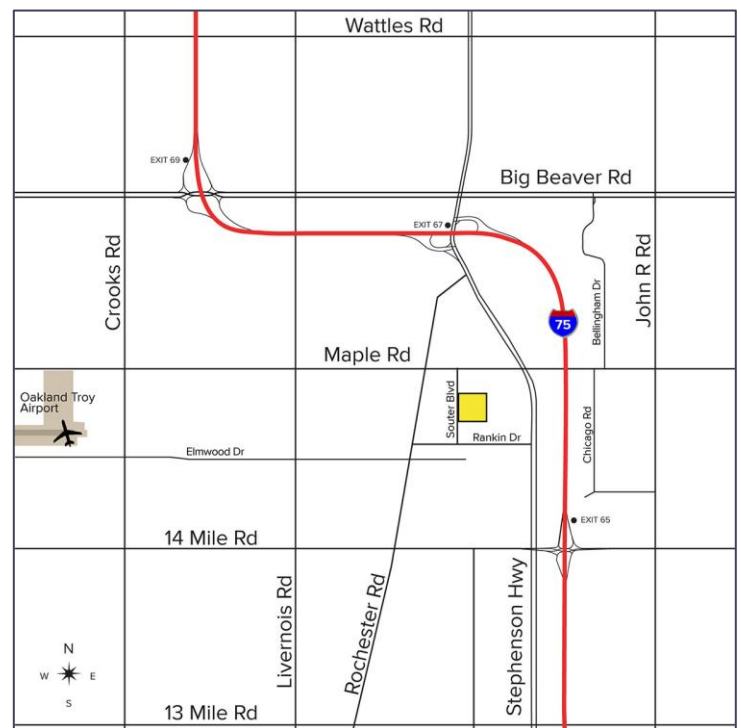
**SIGNATURE
ASSOCIATES**
KNOW SIGNATURE | KNOW RESULTS

SOUTER BUSINESS CENTER



PROPERTY FEATURES

- 3,200 square feet available
- 800 square feet office
- 24,886 square foot multi-tenant property
- 16' clear height
- (1) 12x14 grade level doors
- Zoned Light Industrial
- Ample parking
- Heavy office, large open areas
- Just off Maple Road, easy access to I-75
- 200 amps, 240 volts power
- Lease Rate: \$7.95/sq. ft. NNN



For more information, please contact:

JOE BANYAI
(248) 948 0108
jbanyai@signatureassociates.com

DAN MORROW
(248) 799 3144
dmorrow@signatureassociates.com

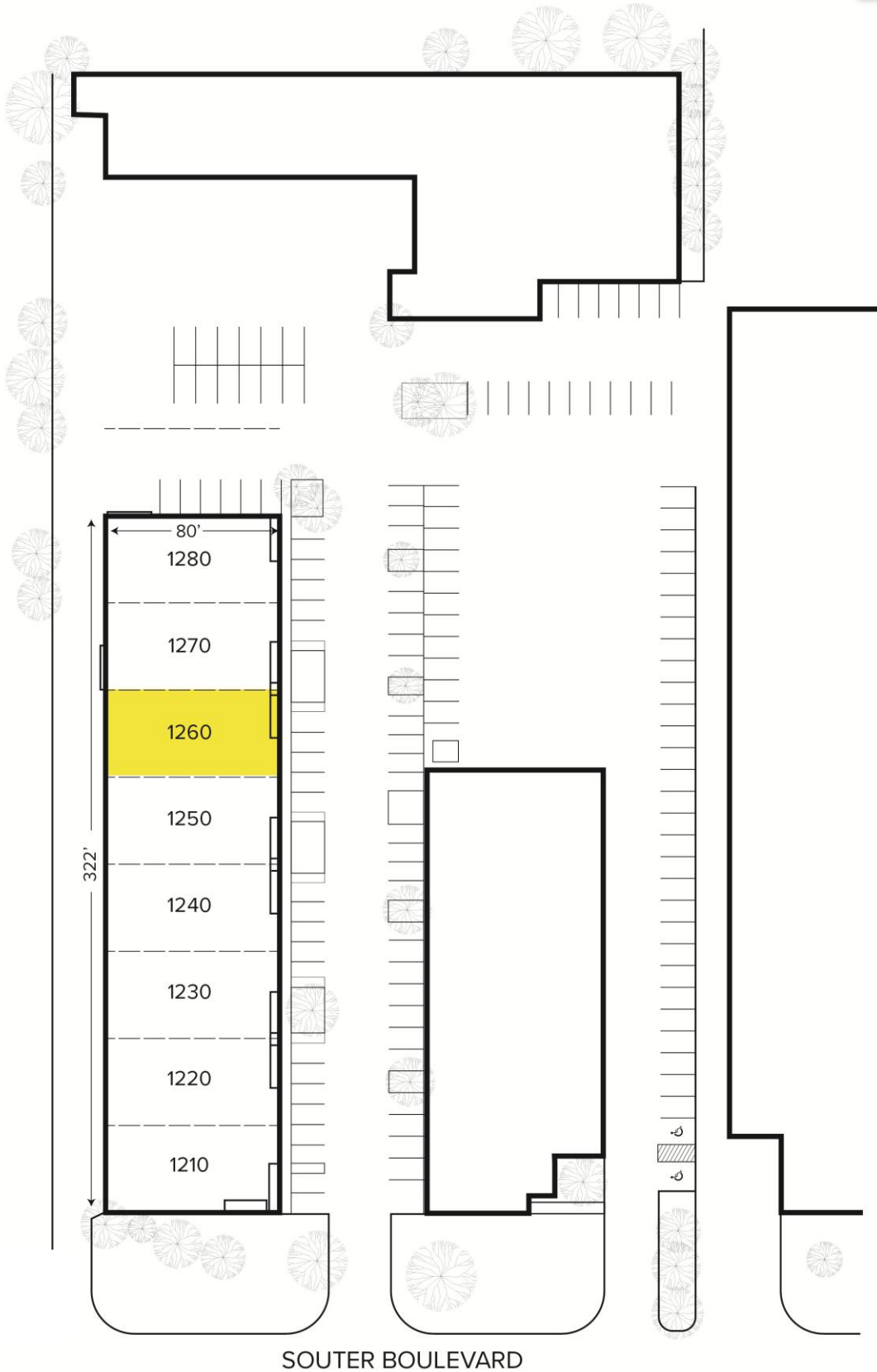
SIGNATURE ASSOCIATES
One Towne Square, Suite 1200
Southfield, MI 48076
www.signatureassociates.com

1210 - 1280 Souter Blvd. – Troy, Michigan

Hi-Tech For Lease

3,200
Square Feet
AVAILABLE

Site Plan



For more information, please contact:

JOE BANYAI
(248) 948 0108

jbanyai@signatureassociates.com

DAN MORROW
(248) 799 3144

dmorrow@signatureassociates.com

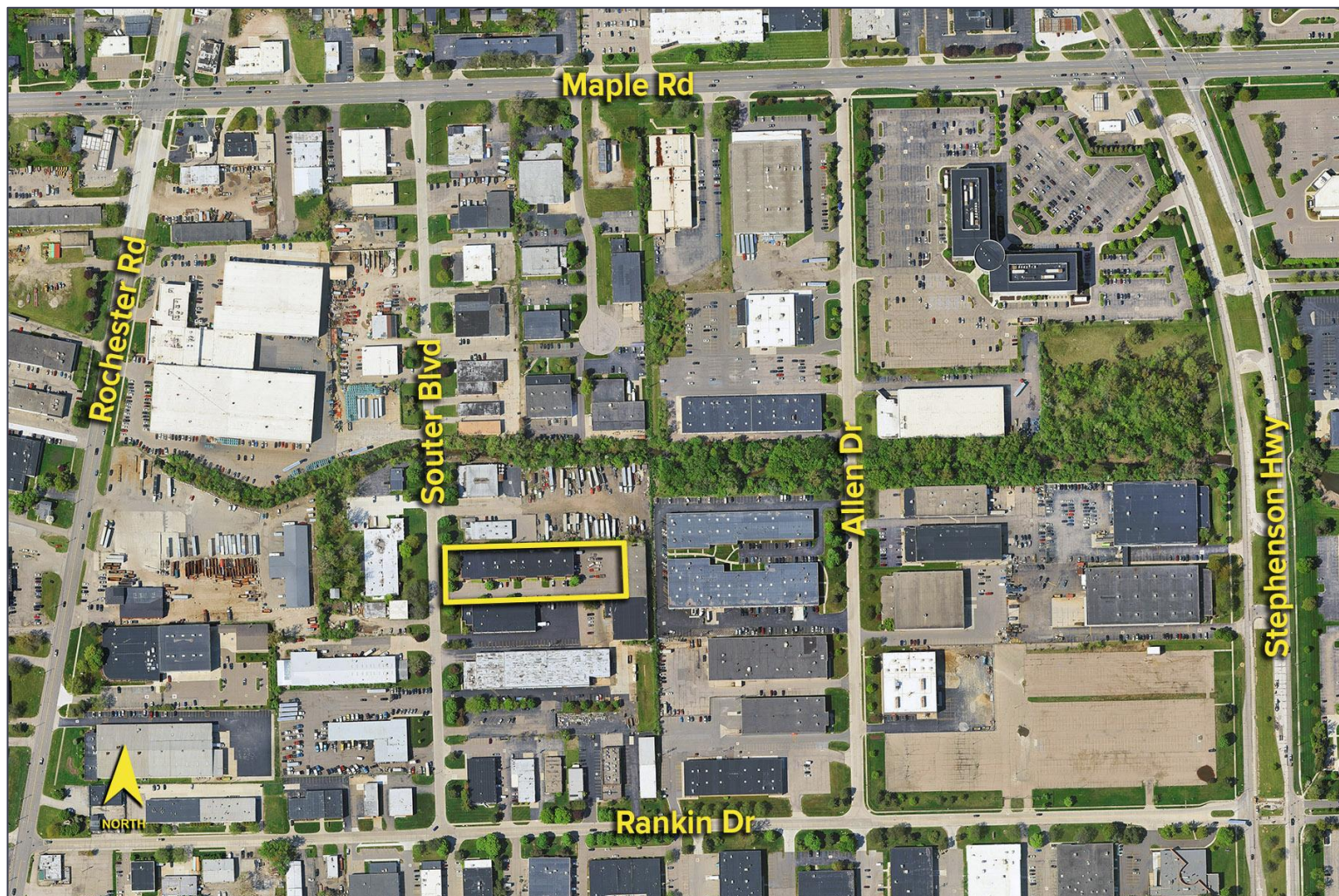
SIGNATURE ASSOCIATES
One Towne Square, Suite 1200
Southfield, MI 48076
www.signatureassociates.com

1210 - 1280 Souter Blvd. – Troy, Michigan

Hi-Tech For Lease

3,200
Square Feet
AVAILABLE

Aerial



For more information, please contact:

JOE BANYAI
(248) 948 0108

jbanyai@signatureassociates.com

DAN MORROW
(248) 799 3144

dmorrow@signatureassociates.com

SIGNATURE ASSOCIATES
One Towne Square, Suite 1200
Southfield, MI 48076
www.signatureassociates.com