

Woodforest Professional Plaza

Plaza I - 750 Fish Creek Thoroughfare
Plaza II - 756 Fish Creek Thoroughfare
Plaza III - 2080 Central Pine Street
Montgomery, TX 77316
www.cbre.com/properties

Montgomery's Newest Medical Office Space



Developed by:



Woodforest Professional Plaza I, II & III

Montgomery, TX 77316



Built to Meet Your Needs

MEDICAL AND PROFESSIONAL OFFICE

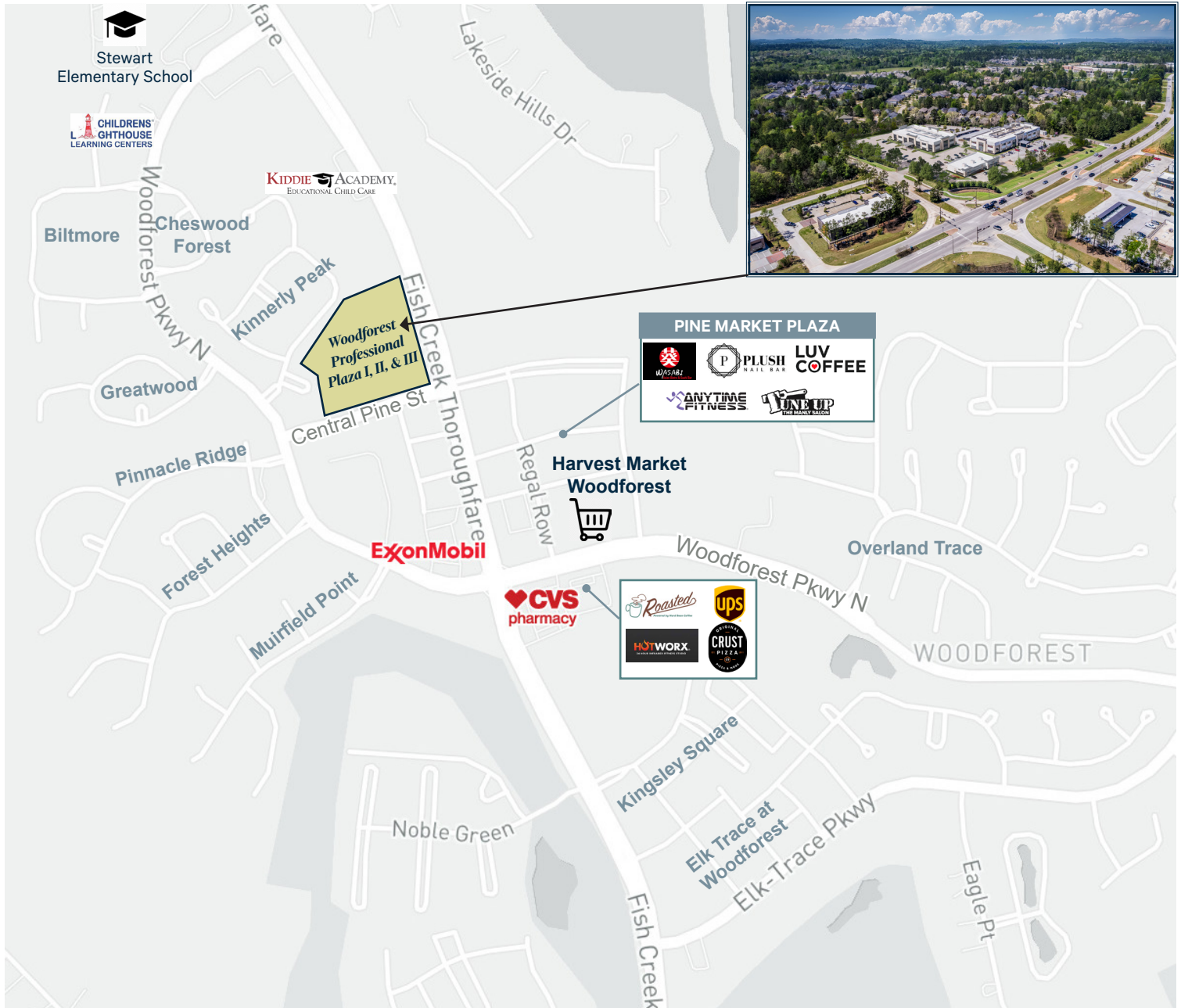
- + Located at the NWC of Fish Creek Thoroughfare and Central Pine Street, near Woodforest Pkwy N.
- + Fish Creek Thoroughfare is a major artery in Montgomery, TX, providing high visibility
- + Free surface parking with a 5/1,000 SF parking ratio
- + Within the Woodforest Community developed by Johnson Development Company
- + Less than 15 miles from Conroe Regional Medical Center, Texas Children's Hospital The Woodlands, St. Luke's Health - The Woodlands Hospital, Memorial Hermann The Woodlands Medical Center, and Houston Methodist The Woodlands Hospital



Woodforest Professional Plaza II



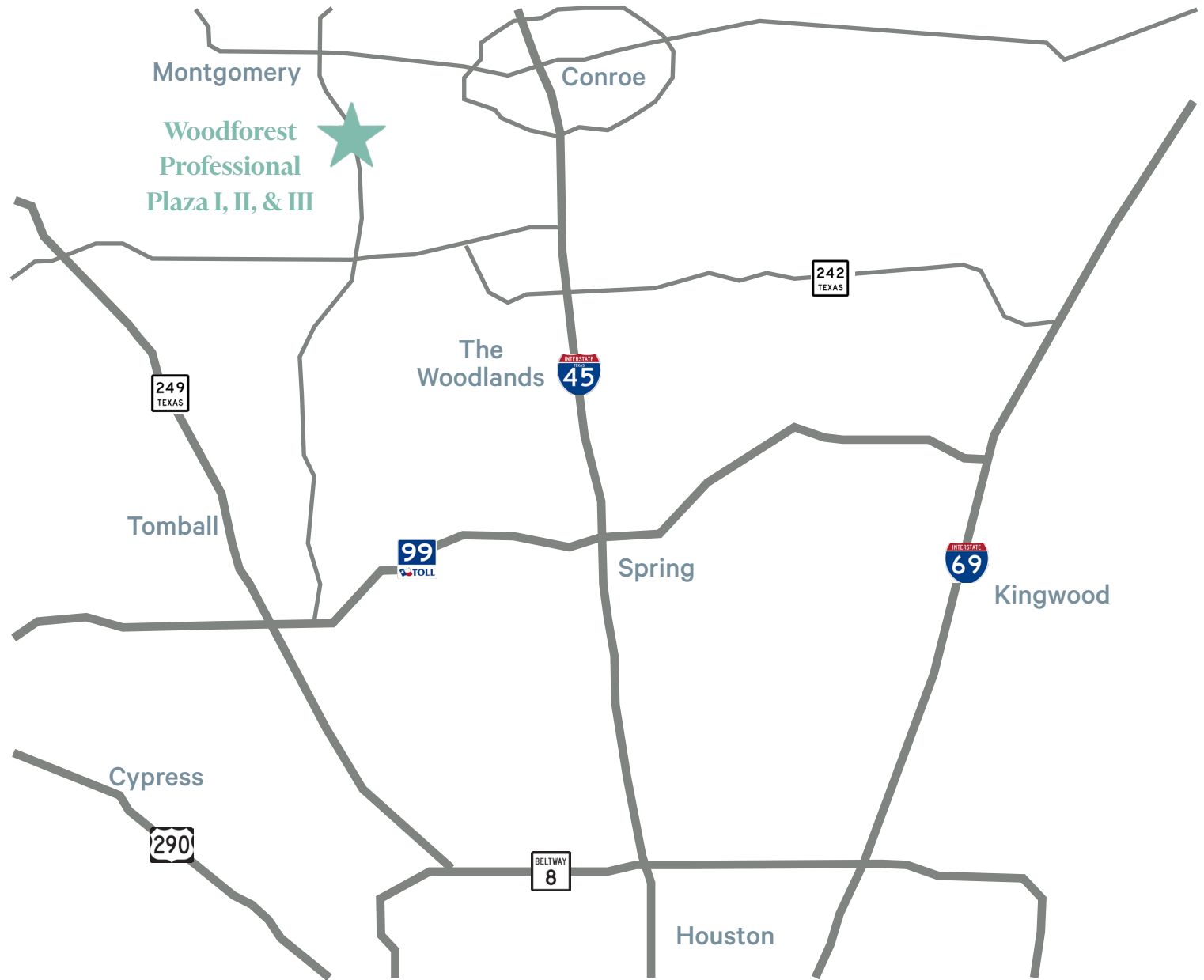
Woodforest Professional Plaza III



DEMOGRAPHICS	1 - MILE	3 - MILE	5 - MILE
2024 Population Estimate	4,334	20,379	54,489
2024 Daytime Population	3,512	14,952	48,569
2029 Population Estimate	6,601	23,771	59,725
2010 - 2021 Annual Population Growth Rate	26.02%	11.41%	5.65%
2024 Median Age	40.1	41.2	39.5
2024 Average Household Income	\$193,285	\$192,878	\$166,946
2024 Avg Housing Value	\$554,568	\$535,959	\$520,960

Woodforest Professional Plaza I, II & III

Montgomery, TX 77316



Plaza I - 750 Fish Creek Thoroughfare

- + 48,516 RSF, 2-Story, Class A, Medical Office Building
- + Completed in Q4 2020
- + Modern, high-end common area finishes
- + Great tenant mix including - Orthopedics, Imaging, Dental, and Pain Management Clinic
- + All spaces are in shell condition and ready for a build-out that will meet your needs

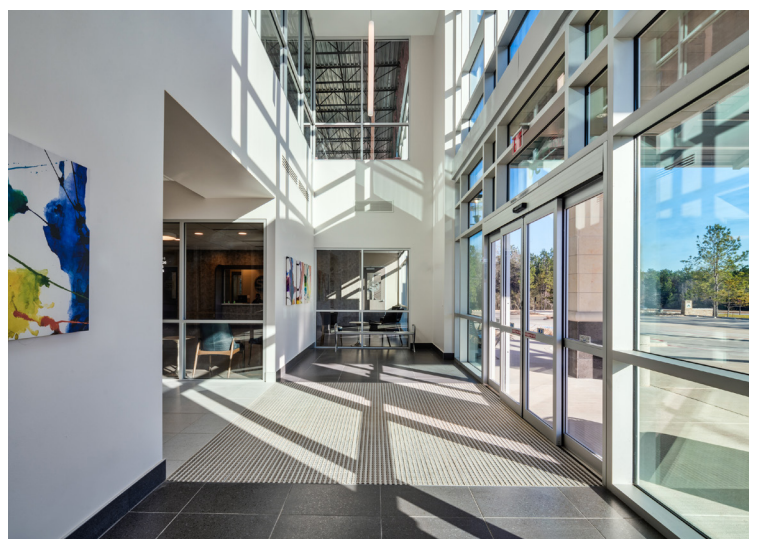
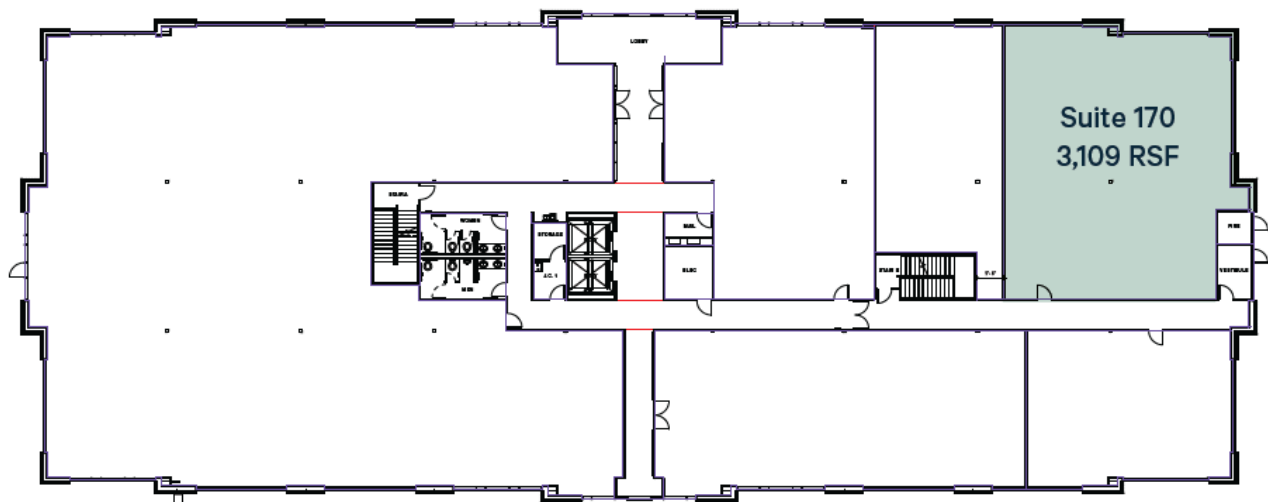
AVAILABILITIES

SIZE

SUITE 170

3,109 RSF

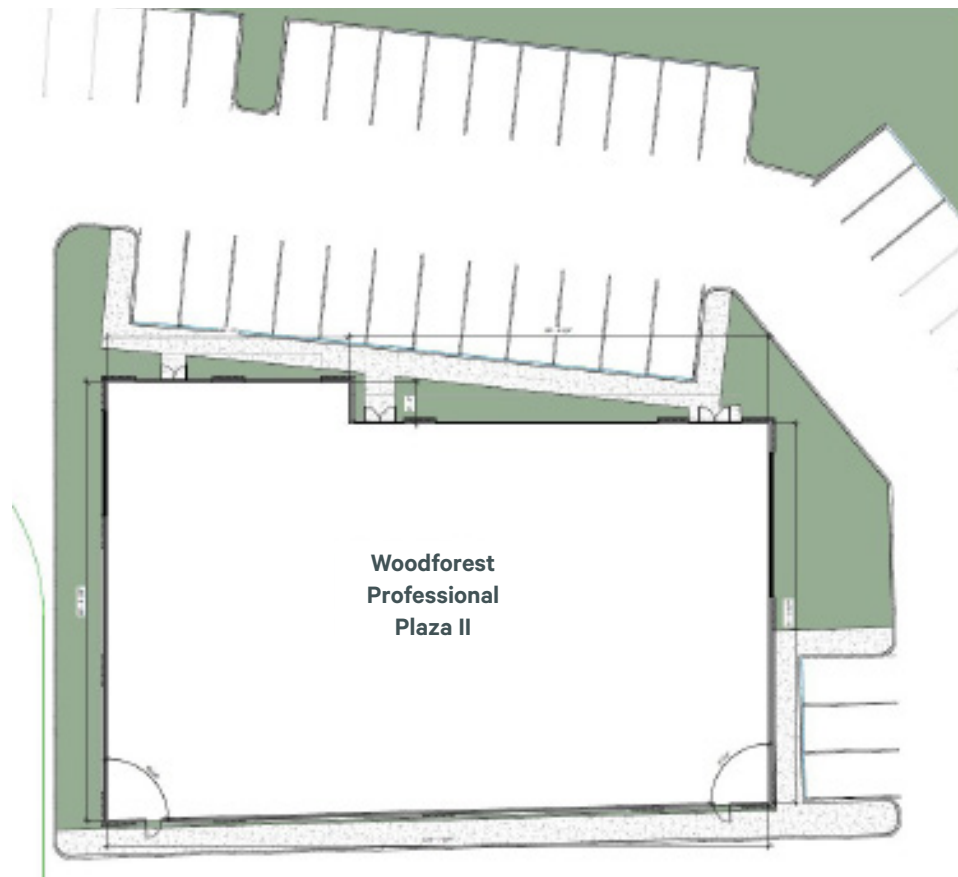
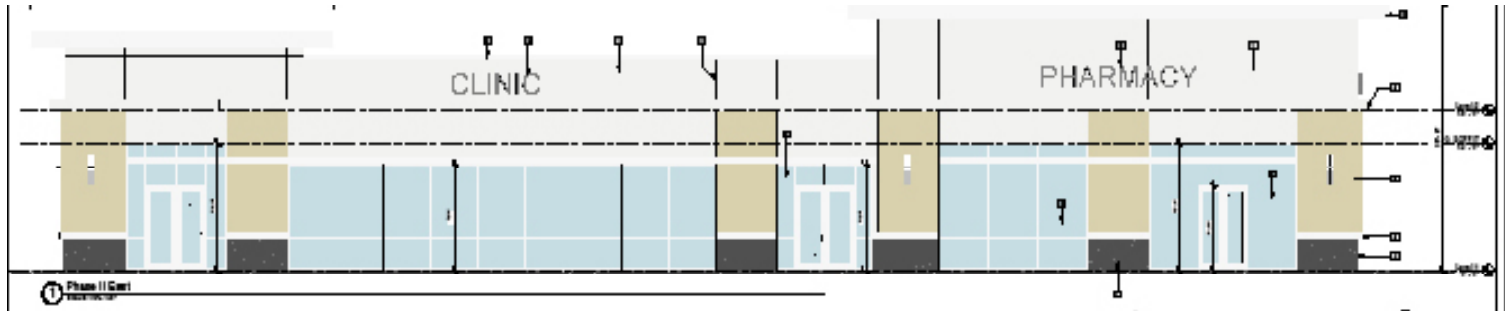
1st FLOOR



Woodforest Professional Plaza I, II & III

Montgomery, TX 77316

Plaza II - 756 Fish Creek Thoroughfare



Pre-Leasing

MEDICAL AND PROFESSIONAL OFFICE

Single Story - 10,000 SF Build-to-Suit

For Lease

Plaza III - 2080 Central Pine Street



1st FLOOR

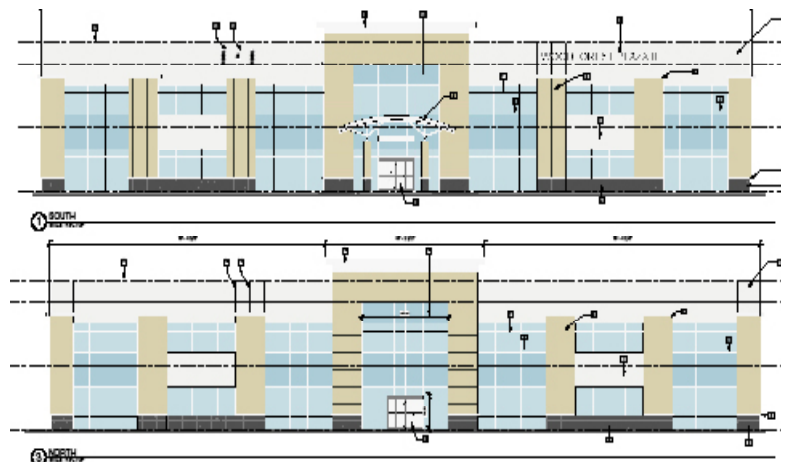


2nd FLOOR

Pre-Leasing

MEDICAL AND
PROFESSIONAL OFFICE

2-Story - 42,000 SF Medical Office Building





Contact Us

Brandy Bellow Spinks

Senior Vice President
+1 713 726 6100
brandy.bellow@cbre.com

Lane Kane

Senior Associate
+1 904 305 7633
lane.kane@cbre.com

Developed by:



© 2025 CBRE, Inc. All rights reserved. This information has been obtained from sources believed reliable, but has not been verified for accuracy or completeness. You should conduct a careful, independent investigation of the property and verify all information. Any reliance on this information is solely at your own risk. CBRE and the CBRE logo are service marks of CBRE, Inc. All other marks displayed on this document are the property of their respective owners, and the use of such logos does not imply any affiliation with or endorsement of CBRE. Photos herein are the property of their respective owners. Use of these images without the express written consent of the owner is prohibited.