

OFFICE SPACE FOR LEASE

Centre 89

8989 Macleod Trail S, Calgary

- » 4-storey office tower.
- » Walking distance to Heritage LRT Station.
- » On-site landlord.
- » Great Tenant parking ratio: 1:400 (reserved). Mix of underground and covered at \$125/stall per mo.
- » Free Visitor surface parking on site (2 hr).
- » HVAC hours: available 24 hours per day on workdays, Saturdays and Sundays at no extra charge.
- » Common boardroom.



GREAT RESERVED
PARKING RATIO
1:400 sf



SECURE
UNDERGROUND
BIKE STORAGE
COMING SOON



ELECTRIC CAR
CHARGING
STATION

CENTRE 89
OFFICE TOWER

FOR MORE
INFORMATION OR
TO VIEW, PLEASE
CONTACT:

Murray Ion, VICE PRESIDENT, PARTNER

c: **403-797-3103**

d: **403-294-7179**

mion@barclaystreet.com



**BARCLAY
STREET**
REAL ESTATE

TCN
WORLDWIDE
REAL ESTATE SERVICES

LOCAL
EXPERTISE
MATTERS

LEASE INFORMATION

MUNICIPAL ADDRESS: 8989 Macleod Trail S, Calgary

AVAILABLE FOR LEASE:

1,616 sq. ft. — Suite 201

- » Glass walls.
- » New finishes and flooring.
- » NW views.

785 sq. ft. — Suite 202

5,107 sq. ft. — Suite 206

- » Demisable from 940 to 5,107 sq. ft.
- » Undeveloped. New turnkey provided.
- » Nice greenspace views.

965 sq. ft. — Suite 207

- » 3 window offices, kitchen.
- » Available on 3-month notice.

2,175 sq. ft. — Suite 304

- » Demisable to ~1,100 & ~1,075 sq. ft. (available in 3 months after lease execution).
- » 5 offices, boardroom, reception, kitchen, storage.

1,622 sq. ft. — Suite 307

- » Mountain views.

1,525 sq. ft. — Suite 409

- » 6 offices, reception, kitchen.

~~998 sq. ft. — Suite 306~~ **LEASED**

~~1,500 sq. ft. — Suite 407~~ **LEASED**

~~2,896 sq. ft. — Suite 401~~ **LEASED**

~~1,064 sq. ft. — Suite 309~~ **LEASED**

PARKING:

- Ratio 1:400 (reserved). Mix of underground and covered at \$125/stall per mo.
- Free Visitor surface parking on site (2 hr).
- Parking ceiling height 6'2"
- Secure underground bike storage — coming soon
- Electric car charging station.

T.I.: Negotiable

OP. COSTS AND TAXES: \$14.93/sq. ft. (est.)

NET RENT: Competitive market rate



BUILDING INFORMATION

NUMBER OF FLOORS: 4

BUILDING AREA: 65,750 sq. ft.

TYPICAL FLOOR: 13,500 sq. ft.

HVAC HOURS: Available 24 hours per day on workdays, Saturdays and Sundays at no extra charge

BUILDING ACCESS HOURS:
6:30 am to 6:00 pm (M-F).



Main lobby



► Shadow-anchored by Save-on-Foods and the Shops at Heritage.

► Retailers on the main floor



Great parking ratio:
1:400 sq. ft. (reserved)

Covered, reserved,
secured stalls.



Electric car charging
station.

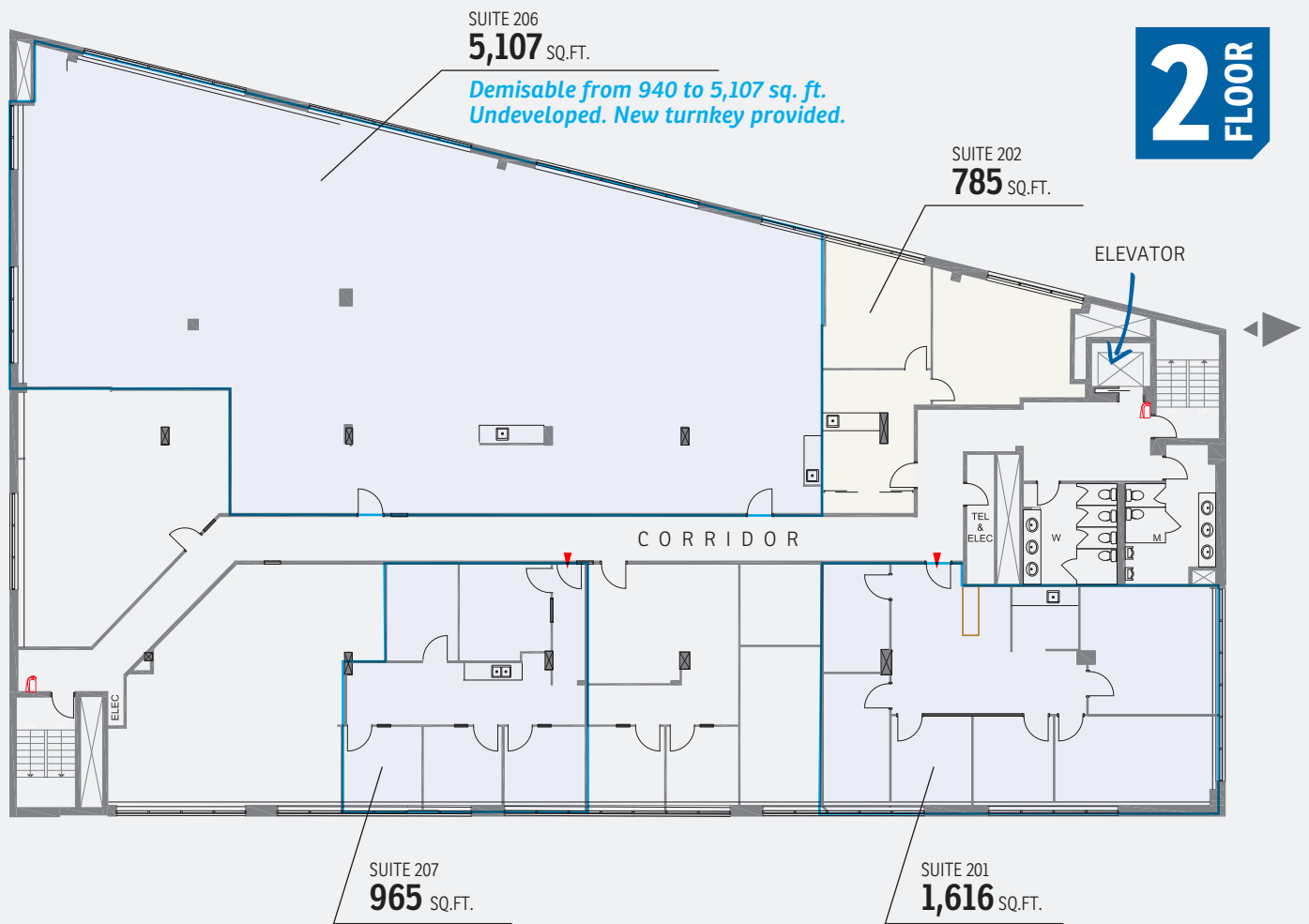


Coming soon:
secure underground
bike storage.



EXAMPLE OF LANDLORD'S
NEW STANDARD
FOR TURN-KEY SPACES

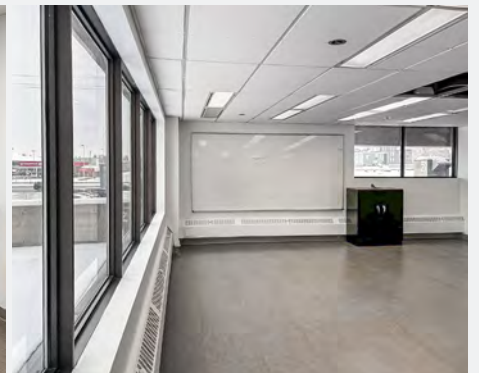


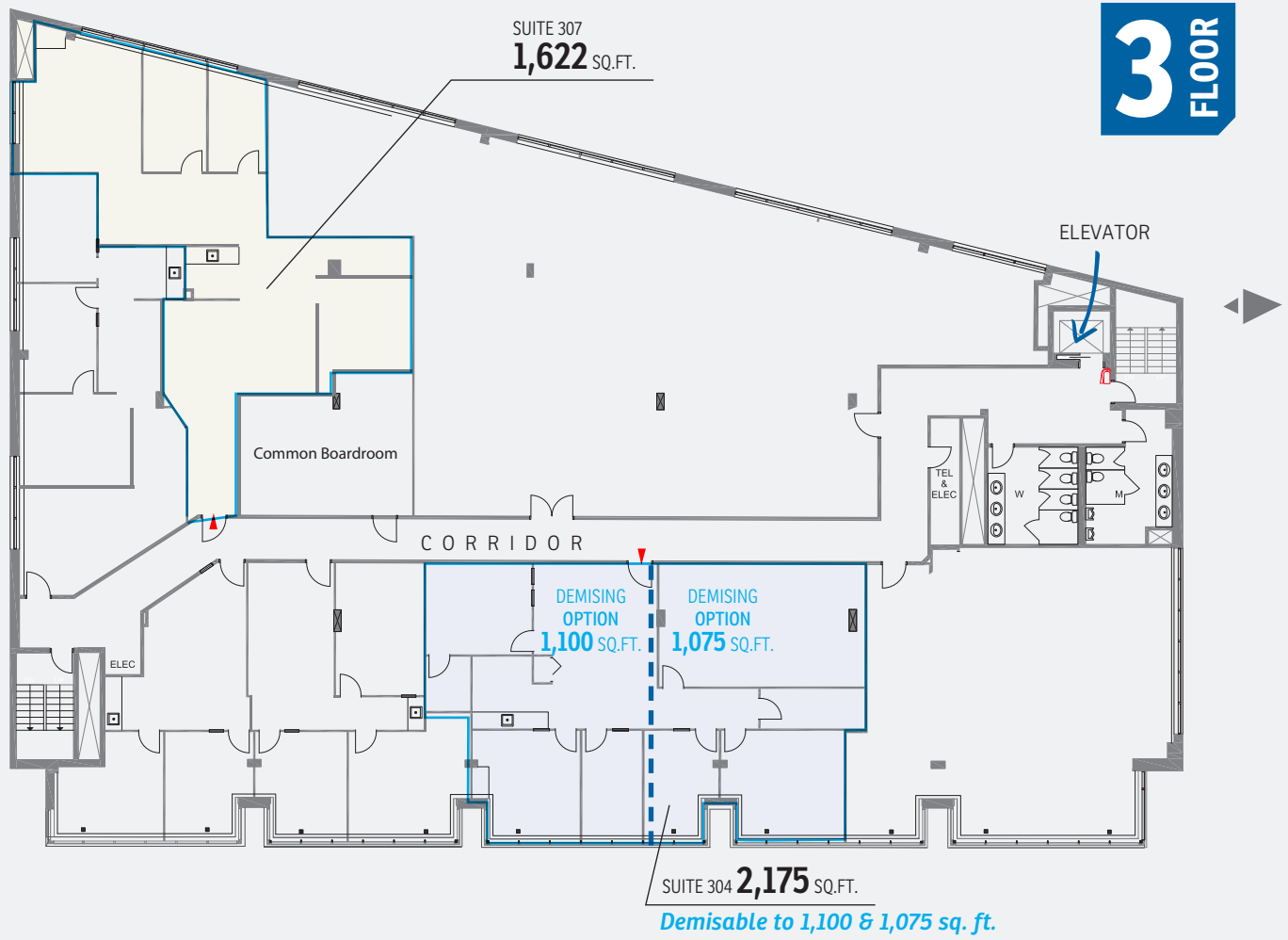


SUITE 207



SUITE 201



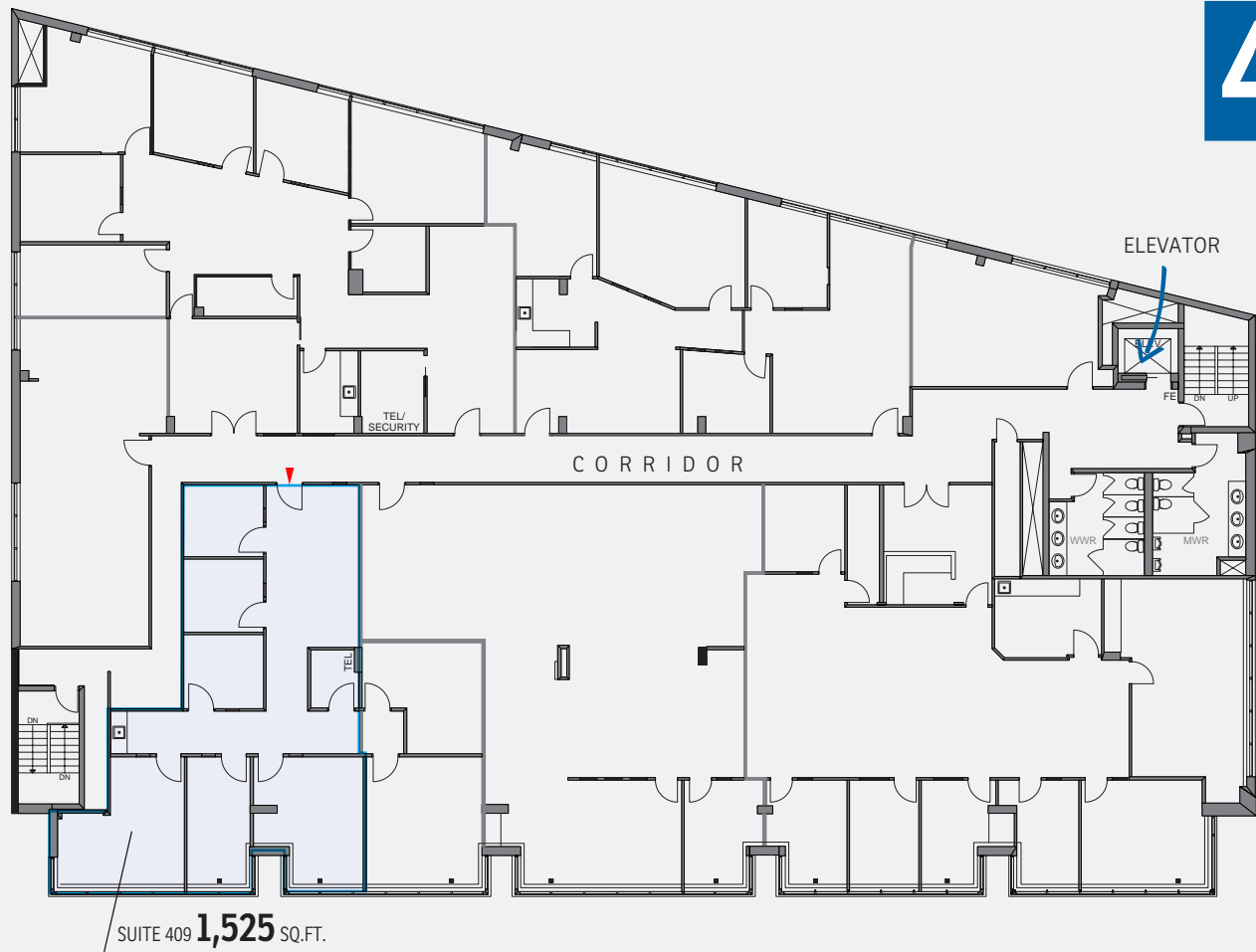


SUITE 304



SUITE 307





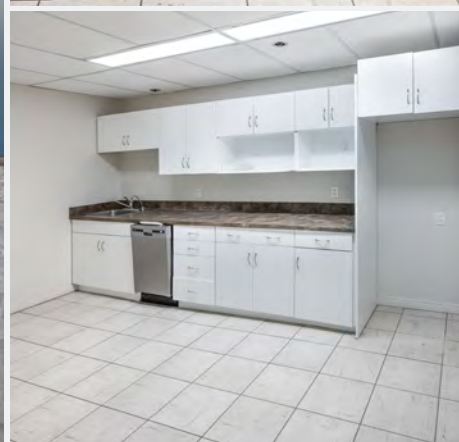
SUITE 409



SUITE 401



LEASED



SUITE 404



LEASED



The information contained herein has been gathered from sources deemed reliable, but is not warranted as such and does not form any part of any future contract. This offering may be altered or withdrawn at any time without notice.

Copyright © 2025 Barclay Street Real Estate Ltd. All rights reserved.

