

Eagle Highlands Business Center

6620-6640 Parkdale Place, Indianapolis, IN 46254

Medical/Office Space for Lease

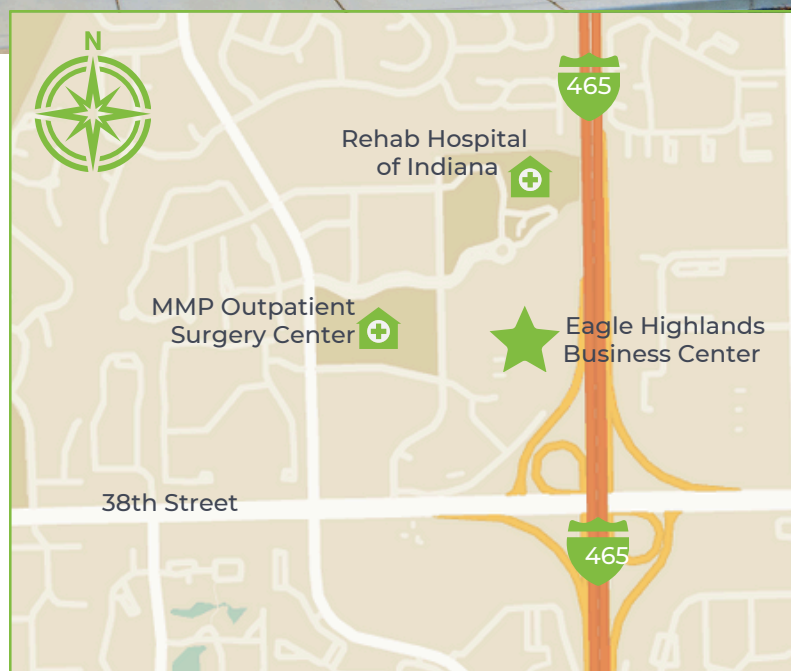


PROPERTY OVERVIEW

NOW AVAILABLE – A 3,531 SF suite at 6640 Parkdale Place in the Eagle Highlands Business Center. This is the last remaining space in the complex.

Eagle Highlands Business Center features two professional office buildings, each approximately 35,000 SF and located at 6620 and 6640 Parkdale Place.

The tenant mix consists of primarily medical-related practices, serving the Eagle Highlands Professional Center and the greater Indianapolis community.



LEASING INFORMATION

Drew Deffner
Executive Vice President
Drew@alopg.com
C: 317.376.3897

Lora Moore
Executive Managing Director
Lora@alopg.com
C: 765.918.4999

ALO Property Group
9075 N Meridian St., Ste. 175
Indianapolis, IN 46260
O: 317.853.7500



Eagle Highlands Business Center

6620-6640 Parkdale Place, Indianapolis, IN 46254

Medical/Office Space for Lease



PROPERTY INFORMATION

- Abundant to your door parking in front and rear of building with exclusive access to individual suites
- Excellent location with access at 38th Street and I-465
- tenant storage and warehouse needs

DEMOGRAPHIC DETAILS

- Within a five-mile radius, \$90,421,398 was spent on health care last year alone.
- The market boasts a growing population of 188,607 within a five-mile radius.
- Large employee base with 42% of workers in the immediate area (one-mile radius) practicing in healthcare and education sectors.

KEY TENANTS



TEAM
REHABILITATION
PHYSICAL THERAPY



Adapt
for Life
Center for ABA Therapy and Autism



United Hope
MEDICAL
Health • Wellness • IV Therapy • Weight Loss

LEASING INFORMATION

Drew Deffner
Executive Vice President
Drew@alopg.com
C: 317.376.3897

Lora Moore
Executive Managing Director
Lora@alopg.com
C: 765.918.4999

ALO Property Group
9075 N Meridian St., Ste. 175
Indianapolis, IN 46260
O: 317.853.7500

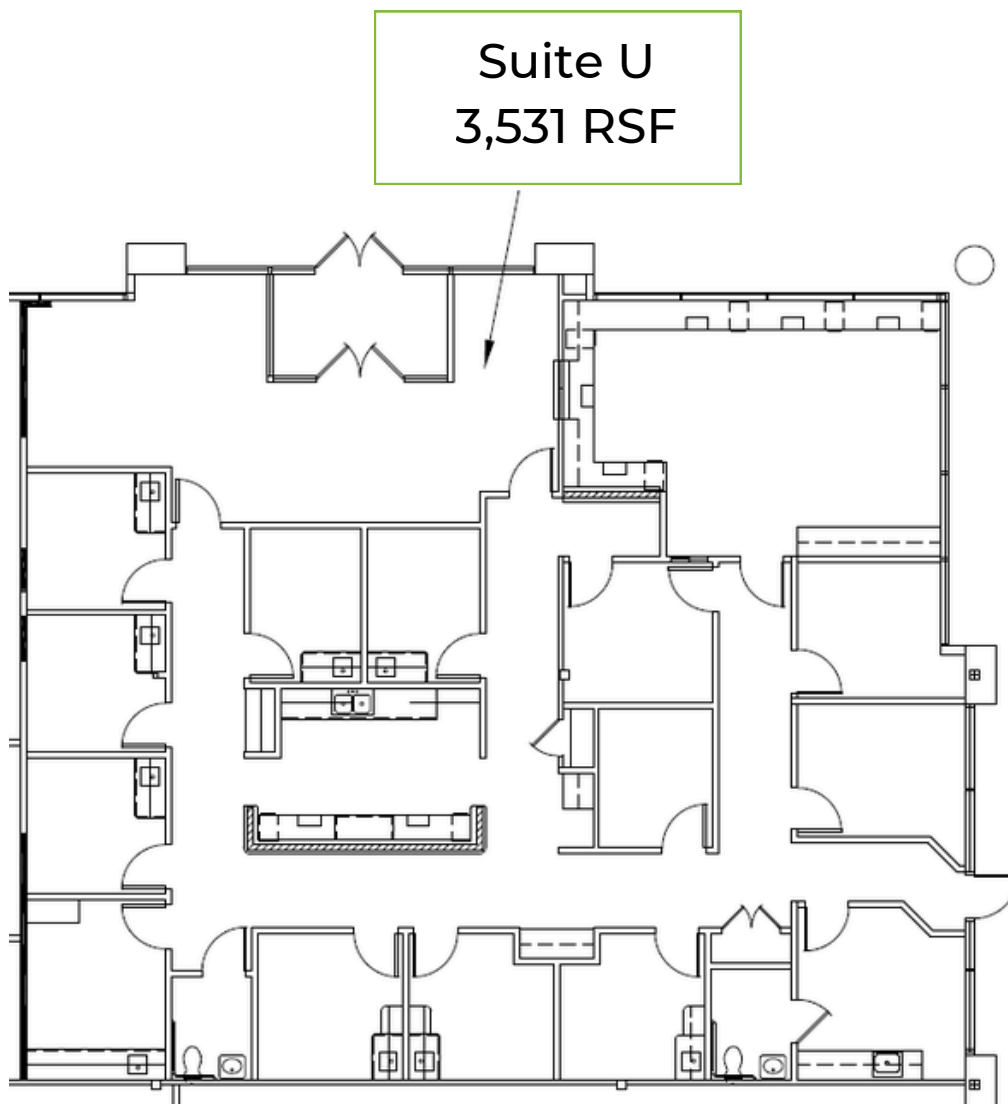


Eagle Highlands Business Center

6620-6640 Parkdale Place, Indianapolis, IN 46254

Availabilities

6640 Parkdale Place - Floor Plan



LEASING INFORMATION

Drew Deffner
Executive Vice President
Drew@alopg.com
C: 317.376.3897

Lora Moore
Executive Managing Director
Lora@alopg.com
C: 765.918.4999

ALO Property Group
9075 N Meridian St., Ste. 175
Indianapolis, IN 46260
O: 317.853.7500

