



READY FOR OCCUPANCY

Building Highlights

Total Building SF:	58,715
Available SF:	58,715
Office SF:	7,110; Recently Renovated
Ceiling Height:	16'-20'
Interior Docks:	5
Power:	400a; 240v
Auto Parking:	+/-30 Spaces
Taxes (2023):	\$1.68 PSF (New 6B In Place)
Asking Rate:	Subject To Offer

For more information, please contact:

Brian Colson

Principal, Industrial Services
brian.colson@avisonyoung.com
+1 312 259 1577

Brian Pomorski

Principal, Industrial Services
brian.pomorski@avisonyoung.com
+1 708 912 2807

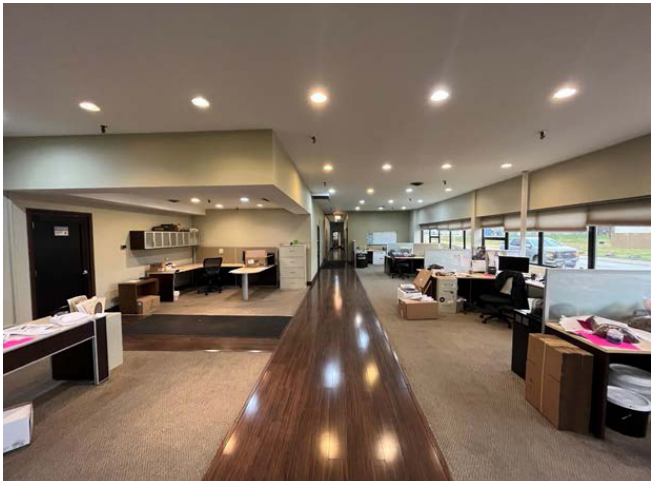
Owned & Managed By:



Property Photos

58,715 SF

Warehouse
1975 N Hawthorne Ave
Melrose Park, IL



ACCESS MAP



For more information, please contact:

Brian Colson
Principal, Industrial Services
brian.colson@avisonyoung.com
+1 312 259 1577

Brian Pomorski
Principal, Industrial Services
brian.pomorski@avisonyoung.com
+1 708 912 2807

**AVISON
YOUNG**