

WESTLAND

TECH CENTER

13805 WEST ROAD, SUITE 300
HOUSTON, TX 77041

3,678 SF FOR LEASE



PROPERTY OVERVIEW

- 61,600 SF
- 4.48 acres
- 16'-18' clear height
- 95' drive around building
- 1,500 amps; heavy power
- Fully sprinklered
- 3.5/1,000 parking ratio
- Rear-load configuration
- Industrial/flex building
- Frontage on West Road
- Built in 2000

WOODY HILLYER
713.300.0271
woody.hillyer@streamrealty.com

JACK RATHE
713.300.0298
jack.rathe@streamrealty.com

STREAM

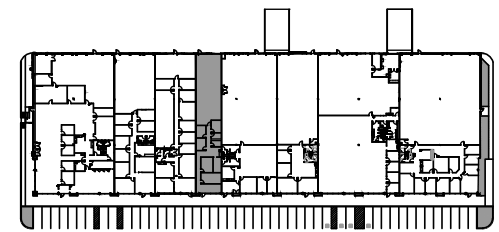
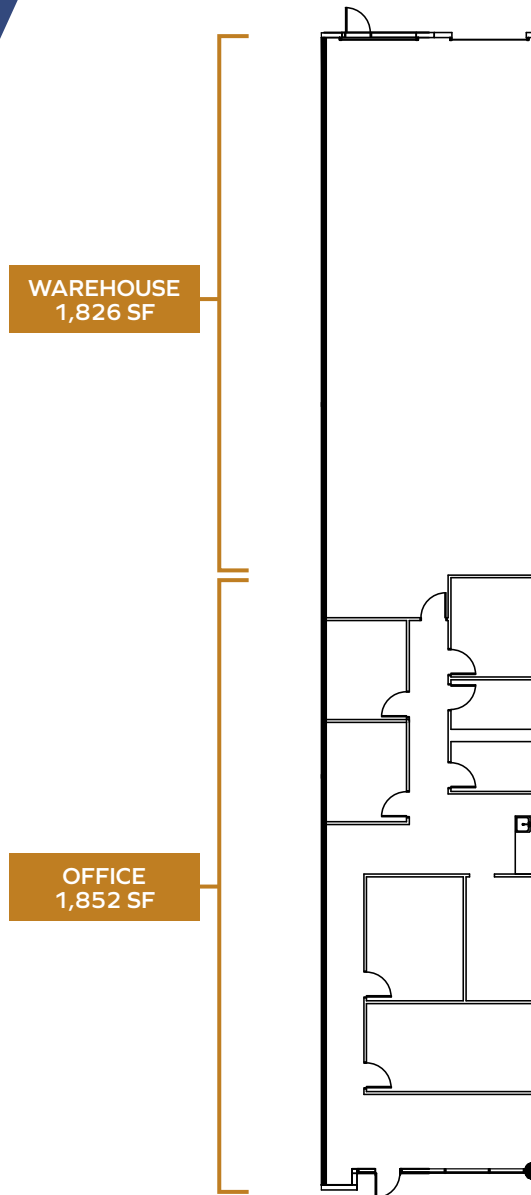
WESTLAND

TECH CENTER

SUITE 300

3,678 SF FOR LEASE

- 1,826 SF warehouse
- 1,852 SF office
- 1 grade-level door
- 18' clear height
- Sprinklered

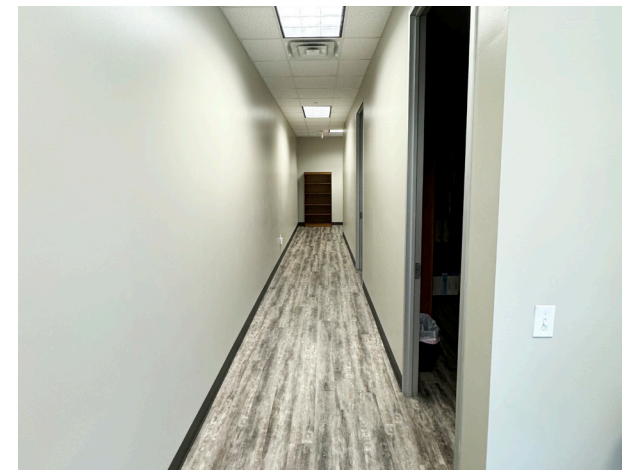
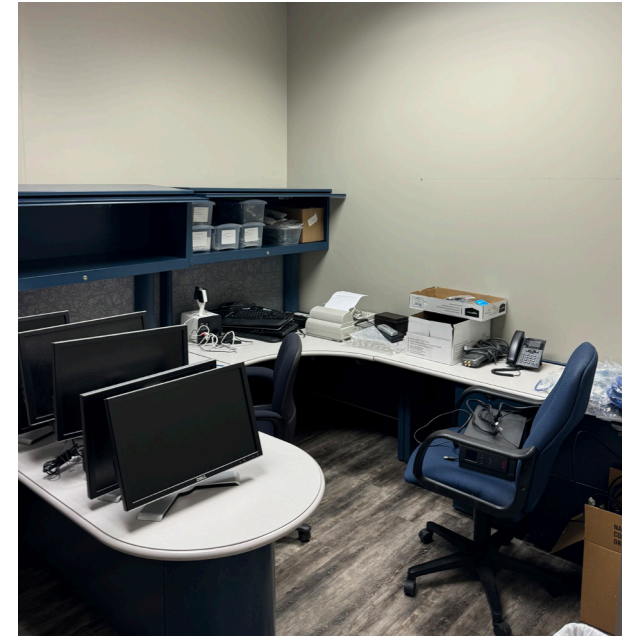


WESTLAND

TECH CENTER

13805 WEST ROAD, SUITE 300
HOUSTON, TX 77041

3,678 SF FOR LEASE



WOODY HILLYER
713.300.0271
woody.hillyer@streamrealty.com

JACK RATHE
713.300.0298
jack.rathe@streamrealty.com


STREAM

WESTLAND

TECH CENTER

13805 WEST ROAD, SUITE 300
HOUSTON, TX 77041

3,678 SF FOR LEASE



WOODY HILLYER
713.300.0271
woody.hillyer@streamrealty.com

JACK RATHE
713.300.0298
jack.rathe@streamrealty.com

STREAM

WESTLAND

TECH CENTER



WOODY HILLYER
 713.300.0271
 woody.hillyer@streamrealty.com

JACK RATHE
 713.300.0298
 jack.rathe@streamrealty.com