



ARES  
INDUSTRIAL  
MANAGEMENT

# WELLS ROAD DISTRIBUTION CENTER

600 WELLS ROAD, ORANGE PARK, FLORIDA 32073

283,301 SQ FT | FOR SALE OR LEASE



## BUILDING HIGHLIGHTS

LEASABLE SPACE:	283,301 SF	SPRINKLERS:	Wet
OFFICE SF:	± 13,118 SF	YEAR BUILT:	1974 / Renovated 2024
PRODUCTION AREA:	±17,268 SF (11'5" Clear)	HVAC WAREHOUSE:	115,800 SF
LAND:	35.58 Acres	LIGHTING:	LED
CLEAR HEIGHT:	30'	AUTO PARKING:	477
DOCKS:	32	TRAILER PARKING:	37
DRIVE-INS:	2	ZONING:	CI
TRUCK COURT:	143'	POWER:	4,000a; 488/270 v 3p 4w Heavy

TYLER NEWMAN

Executive Managing Director  
+1 904 380 8336  
tyler.newman@cushwake.com

JACOB HORSLEY

Executive Managing Director  
+1 904 380 8335  
jacob.horsley@cushwake.com



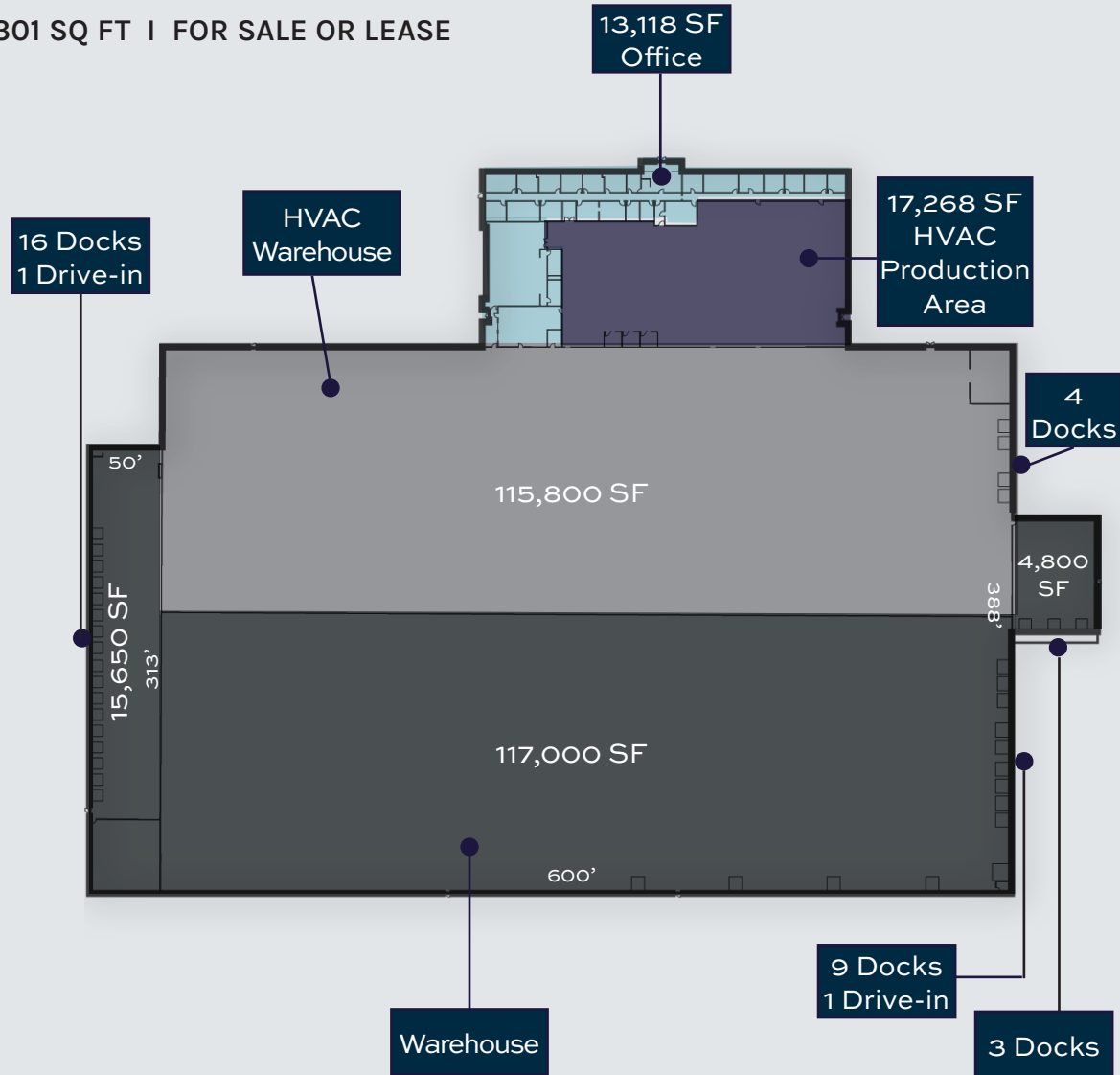


ARES  
INDUSTRIAL  
MANAGEMENT

# WELLS ROAD DISTRIBUTION CENTER

600 WELLS ROAD, ORANGE PARK, FLORIDA 32073

283,301 SQ FT | FOR SALE OR LEASE





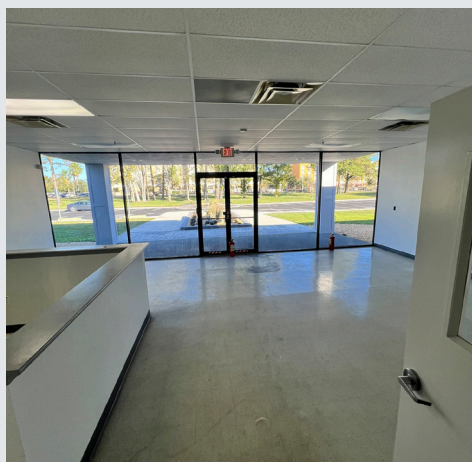


ARES  
INDUSTRIAL  
MANAGEMENT

# WELLS ROAD DISTRIBUTION CENTER

600 WELLS ROAD, ORANGE PARK, FLORIDA 32073

283,301 SQ FT | FOR SALE OR LEASE



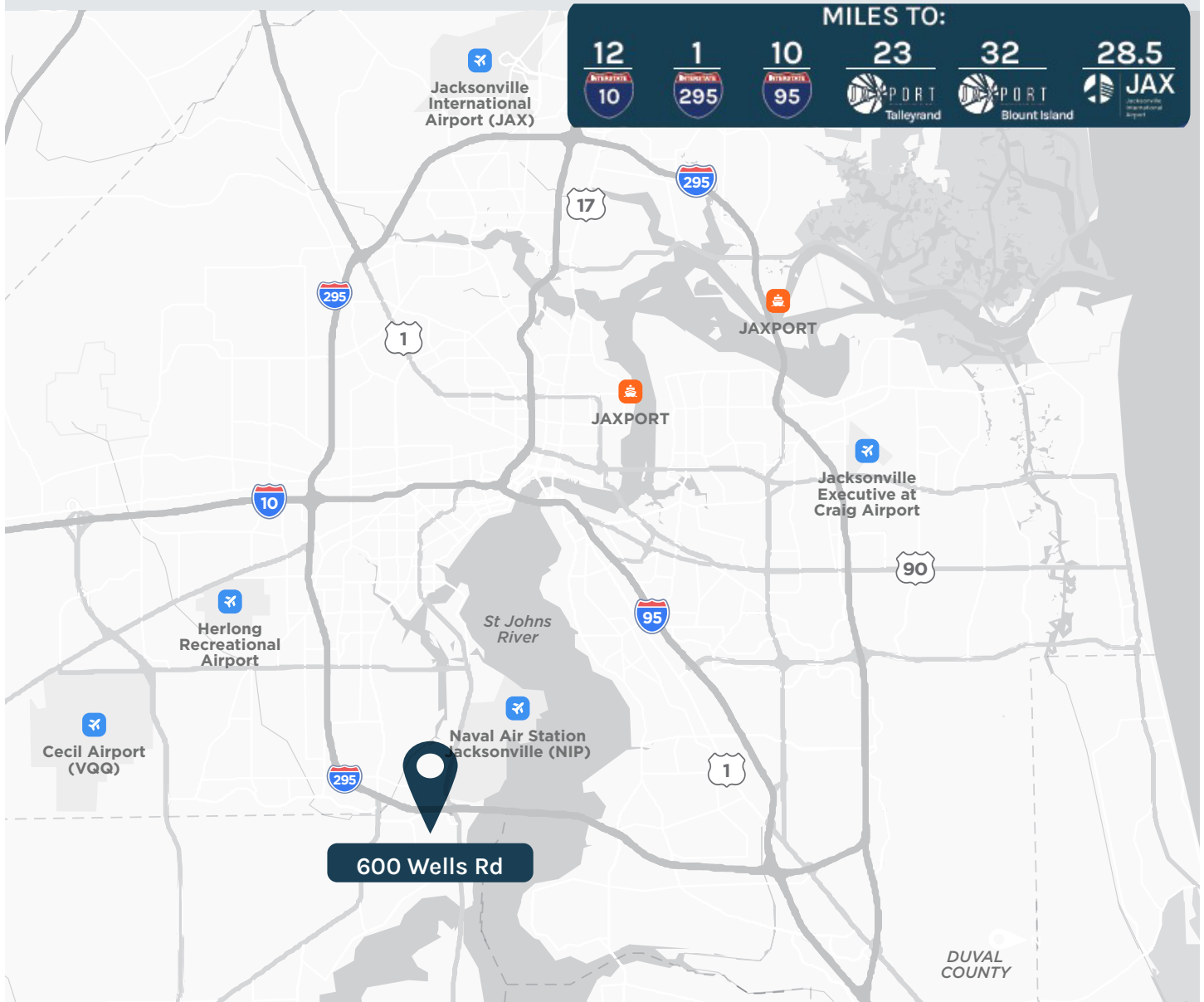


ARES  
INDUSTRIAL  
MANAGEMENT

# WELLS ROAD DISTRIBUTION CENTER

600 WELLS ROAD, ORANGE PARK, FLORIDA 32073

283,301 SQ FT | FOR SALE OR LEASE



TYLER NEWMAN

Executive Managing Director  
+1 904 380 8336  
tyler.newman@cushwake.com

JACOB HORSLEY

Executive Managing Director  
+1 904 380 8335  
jacob.horsley@cushwake.com

