

# ink

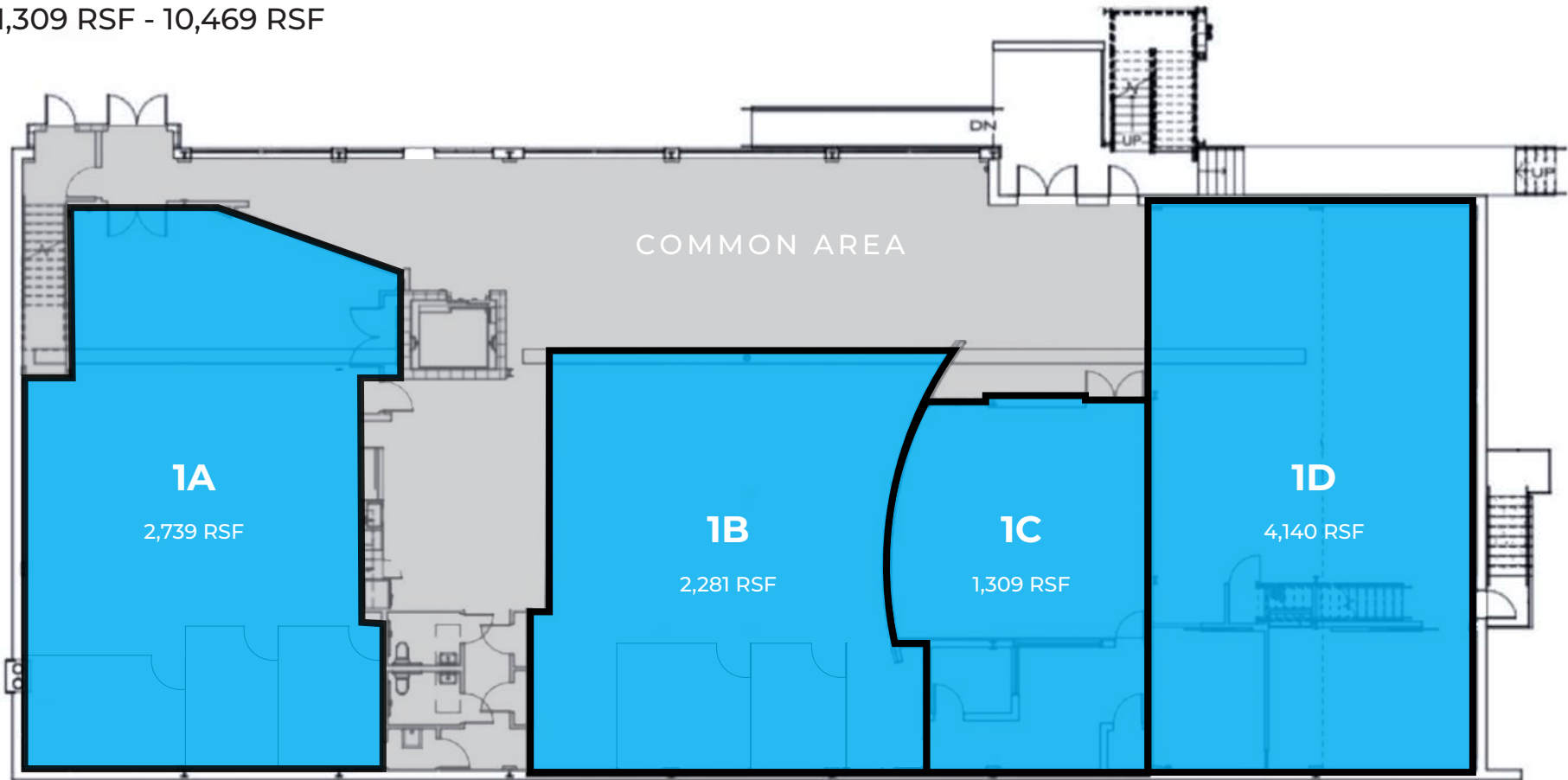
BUILDING



FLOOR PLAN

# floor one

1,309 RSF - 10,469 RSF



613 EWING AVE

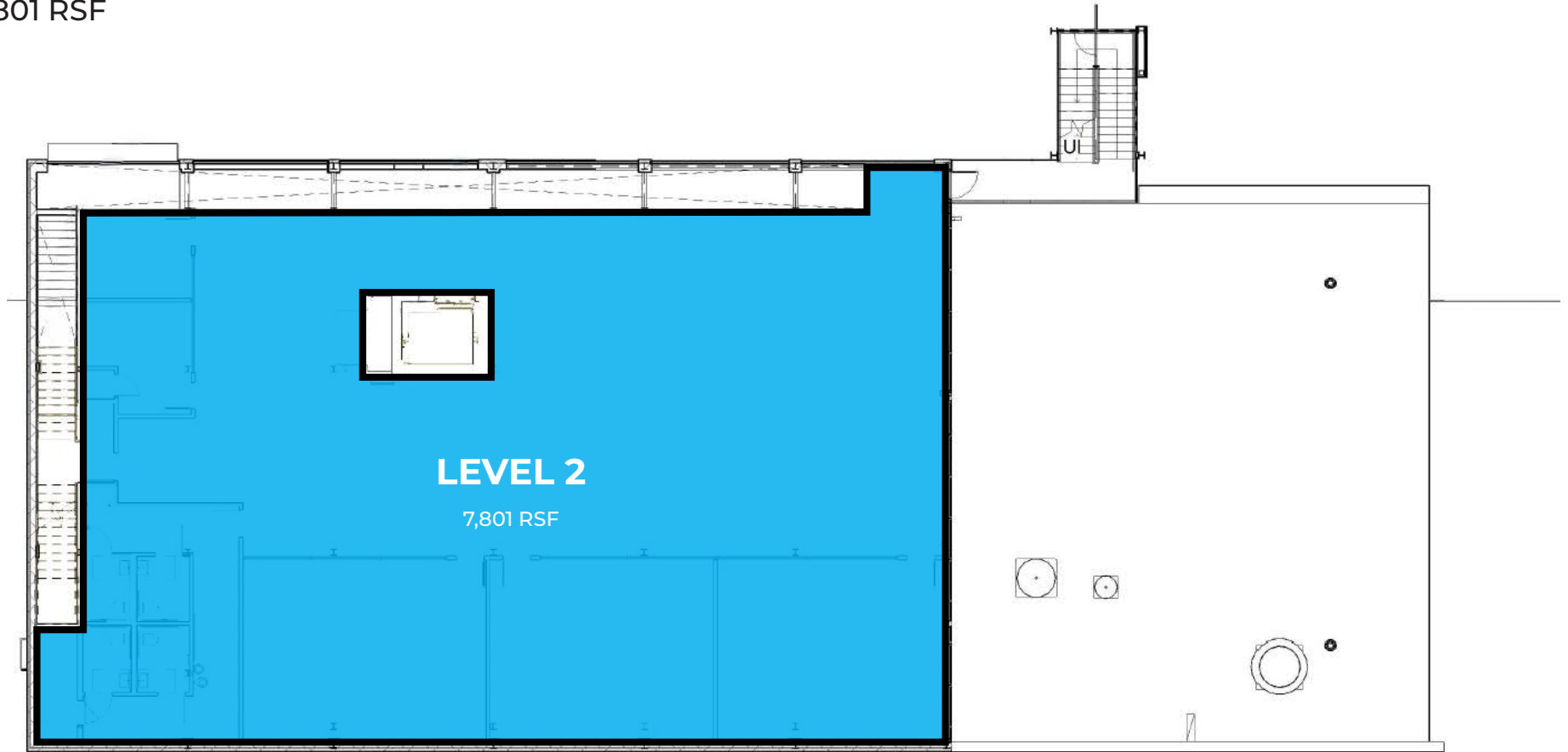
 **ink** BUILDING



FLOOR PLAN

# floor two

7,801 RSF



613 EWING AVE

 **ink** BUILDING





NEIGHBORHOOD

# hospitality



CITY WINERY  
609 Lafayette St



OLE SMOKEY DISTILLERY  
423 6th Ave S



PRICKLY PEAR COFFEE CO.  
645 Division St



MUSIC CITY CENTER  
201 Rep. John Lewis Way S



PIE TOWN TACOS  
614 Ewing Ave



WALT GRACE VINTAGE  
701 Ewing Ave



THE LISTENING ROOM  
801 Ewing Ave



FEDERALES  
636 Division St



THIRD MAN RECORDS  
623 7th Ave S



ST. REGIS  
805 Demonbreun St



FOGG STREET LAWN CLUB  
652 Fogg St



ELEMENT BY WESTIN  
536 Lafayette St



TENNESSEE BREW WORKS  
809 Ewing Ave

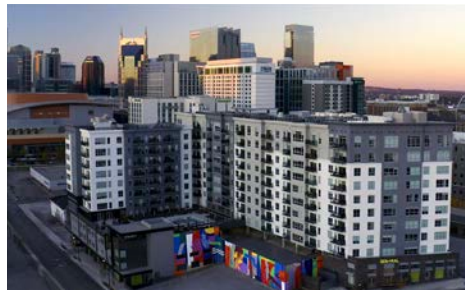
613 EWING AVE

NEIGHBORHOOD

# residential



Haven  
641 Division St | 299 Units



Sentral SoBro  
530 6th Ave S | 297 Units



VeLa Pie Town  
601 Lafayette St | 411 Units



Albion in the Gulch  
645 Division St. | 415 Units



EXQ Exeter  
531 Lafayette St | 385 Units



Hyve  
635 8th Ave S | 83 Units



Modera SoBro  
825 6th Ave S | 404 Units



The Burnham  
501 Rep John Lewis Way | 328 Units

613 EWING AVE

 **ink** BUILDING





NEIGHBORHOOD

# aerial view



613 EWING AVE

 **ink** BUILDING



## NEIGHBORHOOD

# area map

### 1. INK BUILDING

#### HOSPITALITY

2. CITY WINERY
3. PIE TOWN TACOS
4. TENNESSEE BREW WORKS
5. OLE SMOKEY
6. MUSIC CITY CENTER
7. THIRD MAN RECORDS
8. ST REGIS
9. THE LISTENING ROOM
10. FOGG STREET LAWN CLUB
11. FEDERALES
12. WALT GRACE VINTAGE
13. ELEMENT BY WESTIN
14. 3RD AND LINDSLEY HOTEL
15. JW MARRIOTT HOTEL
16. THE WESTIN HOTEL
17. OMNI HOTEL
18. AC HOTEL
19. HYATT HOUSE
20. THE BURNHAM
21. PRICKLY PEAR COFFEE CO.

#### RESIDENTIAL

21. ALBION
22. VELA PIE TOWN
23. EXQ EXETER
24. HAVEN
25. HYVE
26. SENTRAL SOBRO
27. MODERA SOBRO



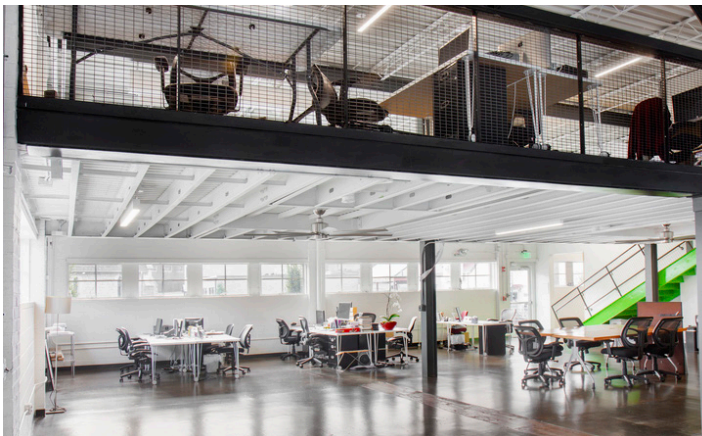
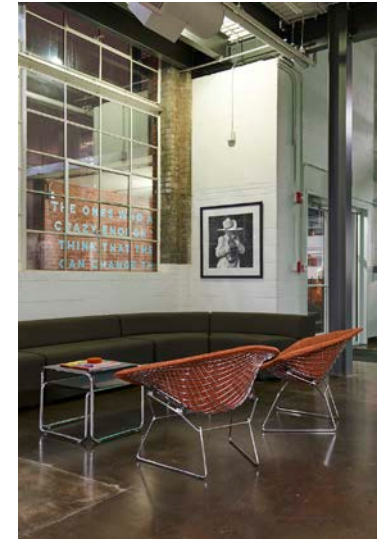
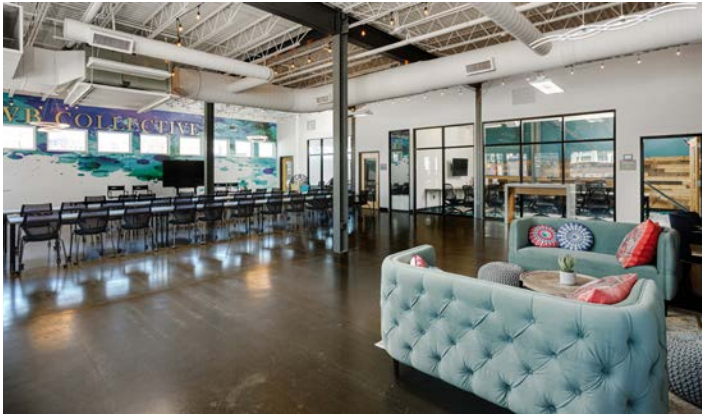
613 EWING AVE





GALLERY

# interior



613 EWING AVE

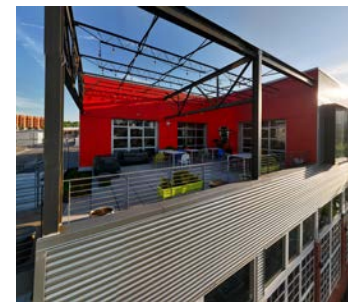
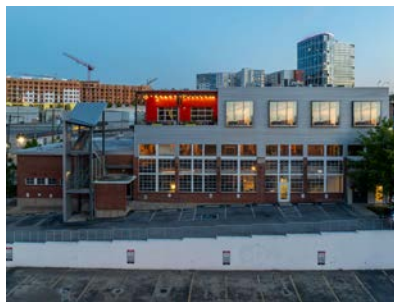
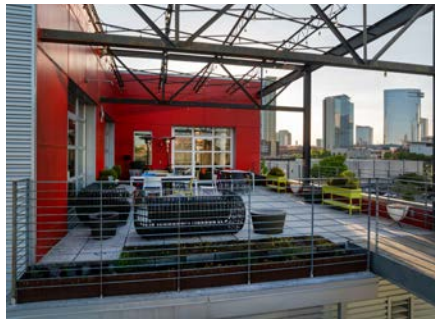
 **ink** BUILDING





GALLERY

# exterior

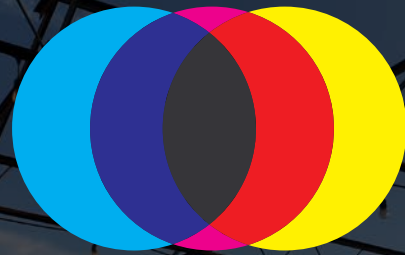


613 EWING AVE

 **ink** BUILDING







# ink

BUILDING

**Cameron Bice**

205.335.0105  
cbice@sagemontre.com

**Matt Cooper**

615.319.0124  
mcooper@sagemontre.com

**Lanier Daniel**

404.805.5459  
ldaniel@sagemontre.com

**Trent Yates**

615.268.7724  
tyates@sagemontre.com