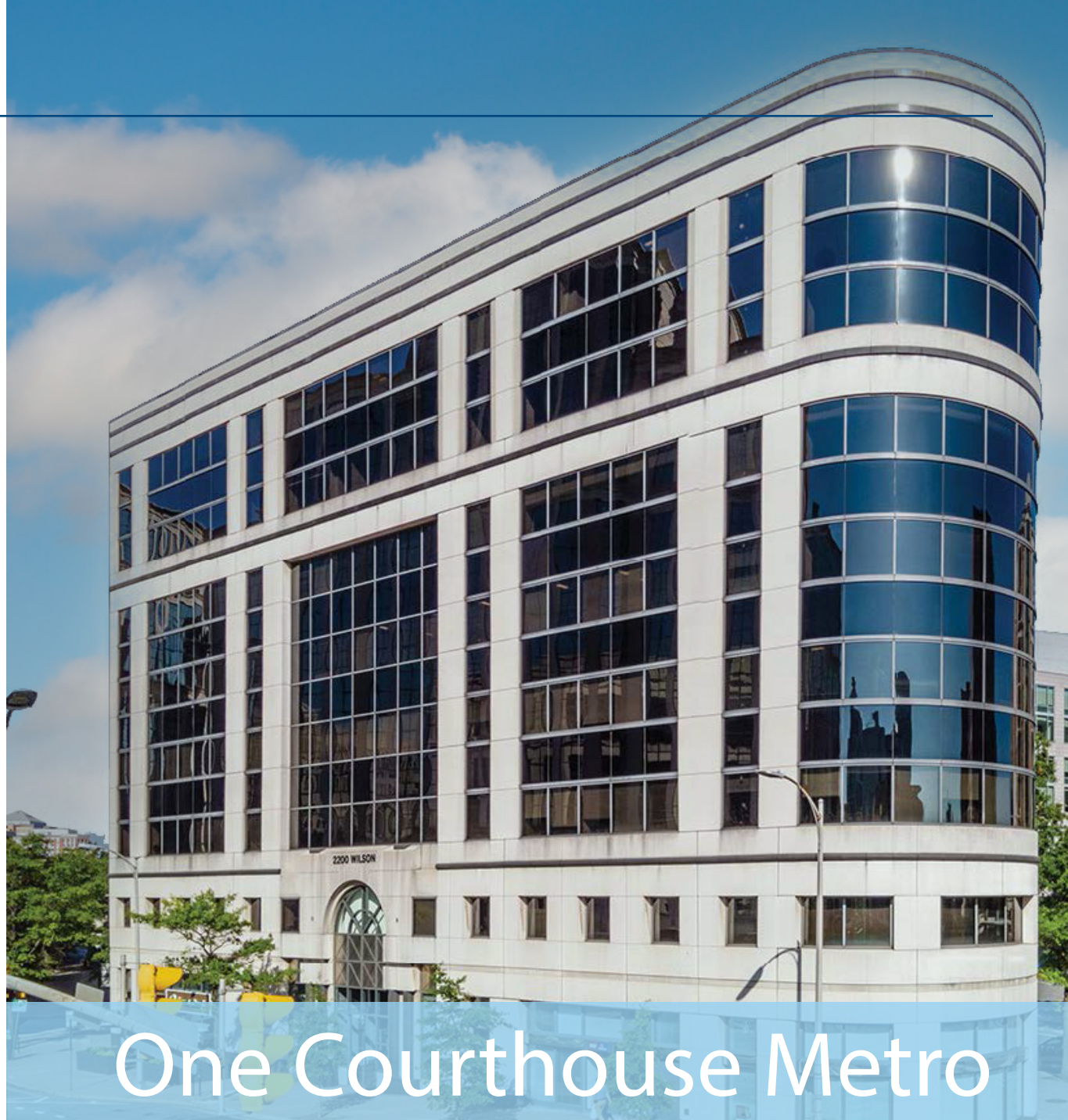


FOR SUBLEASE

Secure Space Available

- > Class A Office
- > 13,375 SF Full Floor Immediately Available
- > Term: Thru June 30, 2030
- > New Tenant-Only Conference Facility
- > Surrounded by Walk-to Retail
- > Adjacent to Courthouse Metro Station



One Courthouse Metro



Colliers
1625 Eye Street NW, Suite 950
Washington, DC 20006
www.colliers.com

Adam Schindler
Vice Chair | D.C. Region
+1 202 534 3604
adam.schindler@colliers.com

Space Details



34 Private Offices



2 Work Rooms



2 Conference Rooms



Kitchen & Eating Areas

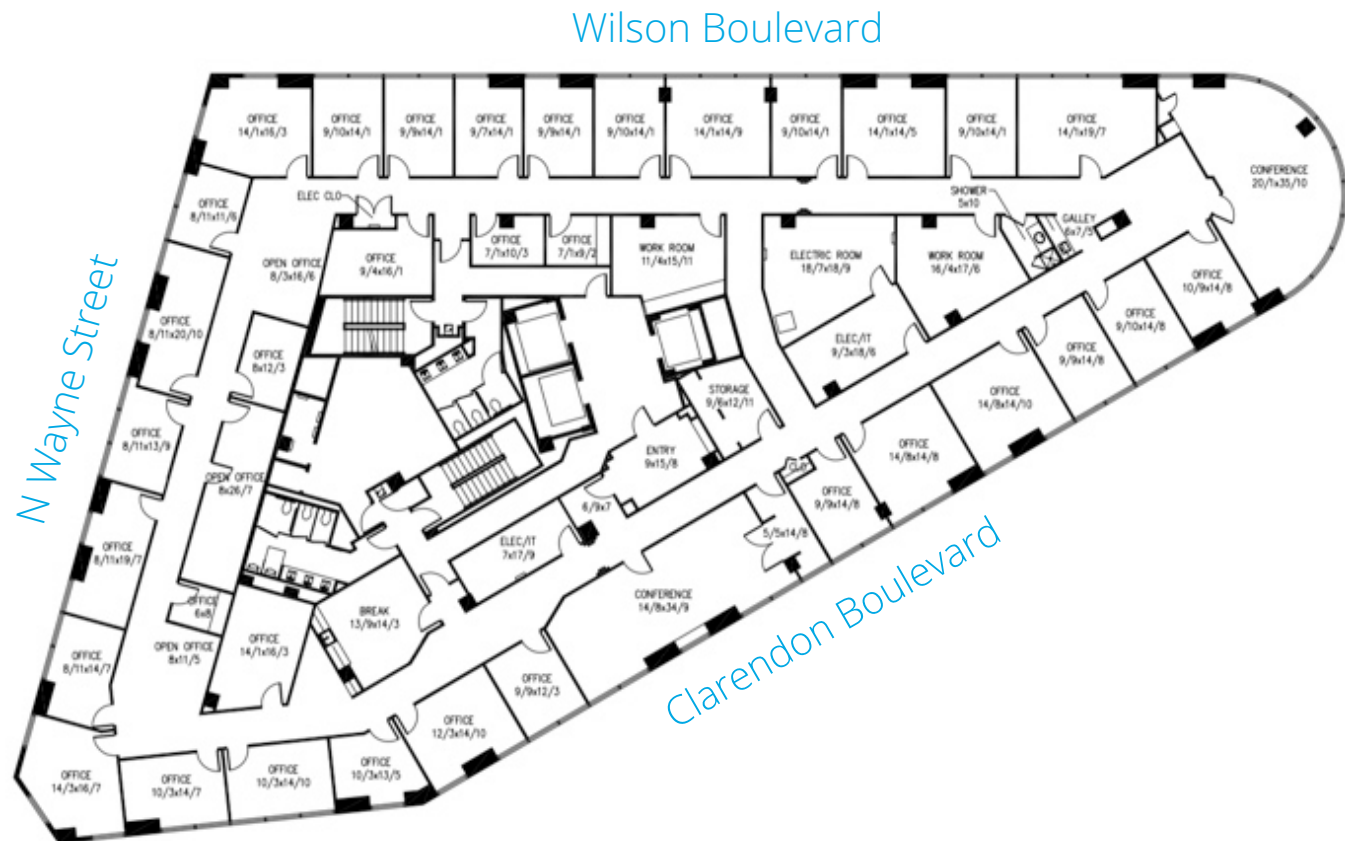


Telephone Rooms



Full Floor Secured Space

FLOOR PLAN



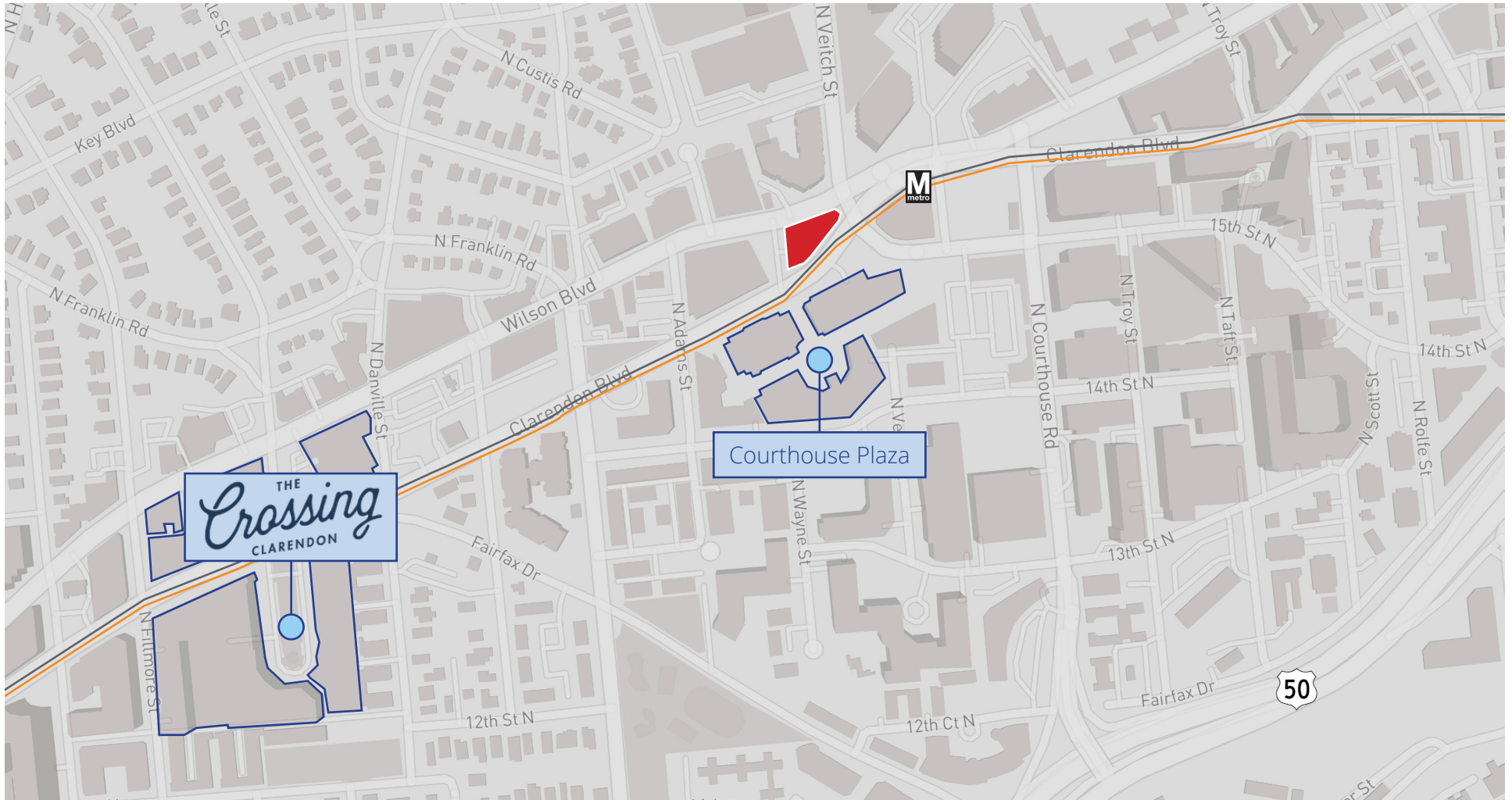
Colliers
1625 Eye Street NW, Suite 950
Washington, DC 20006
www.colliers.com

Adam Schindler
Vice Chair | D.C. Region
+1 202 534 3604
adam.schindler@colliers.com

FOR SUBLEASE

- 8 minute drive to The Pentagon
- 13 minute drive to the White House
- 9 minute drive to Ronald Reagan Washington National Airport
- 0.4 mile to US-50

AERIAL MAP



Colliers
1625 Eye Street NW, Suite 950
Washington, DC 20006
www.colliers.com

Adam Schindler
Vice Chair | D.C. Region
+1 202 534 3604
adam.schindler@colliers.com