

703 Jefferson Street ~ Napa, CA

For Sale or Lease ~ ±3,727 SF



Two-Building Office Complex ~ Close to Downtown Napa **Corner Lot with High Visibility and Excellent Parking (19 Spaces)**

Buildings: ±3,727 SF ~ Sale: \$2,195,000 (\$642.61/SF) ~ Lease: \$2.50/SF/Mo. NNN

PRIMARY OFFICE: ±3,160 SF

- Two Stories with Warm Entry Lobby
- 3-4 1st Floor Offices & Five 2nd Floor Offices
- Conference Room with Tasting Bar
- Kitchen with Adjacent Pantry Room
- Handicapped Lift to 1st Floor
- Central HVAC, High Ceilings & Generous Window Lines
- Restroom with Shower on Each Floor
- Cold Storage Room
- Basement (±312 SF)

Zoning: Office Commercial (OC)



SECONDARY BUILDING: ±567 SF

- Entry Hall
- Two (2) Private Rooms
- Restroom with Shower
- Common Room with Sink & Cabinets



Michael Moffett

License #00946472

707.479.1976

mmoffett@cbnapavalley.com

1775 Lincoln Ave.
Napa, CA 94558

Cathy Holmes

License #01355085

707.304.3338

cholmes@cbnapavalley.com



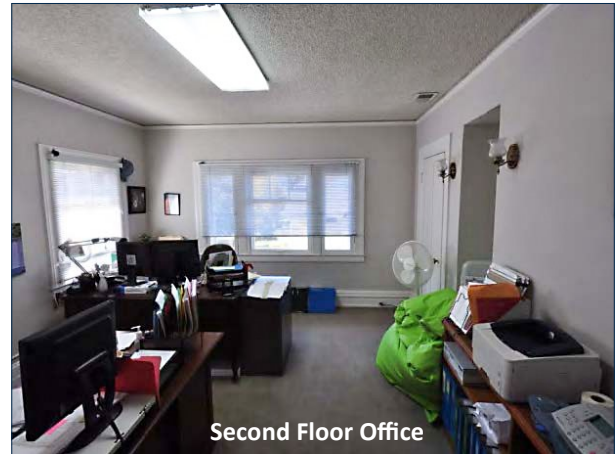
703 Jefferson Street ~ Napa, CA

For Sale or Lease ~ ±3,727 SF

PRIMARY BUILDING PHOTOS



First Floor Office



Second Floor Office



Stairwell from 2nd Floor



Conference Room & Wine Bar



Michael Moffett

License #00946472

707.479.1976

mmoffett@cbnapavalley.com

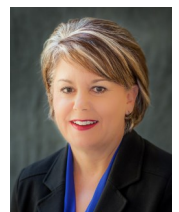
1775 Lincoln Ave.
Napa, CA 94558

Cathy Holmes

License #01355085

707.304.3338

cholmes@cbnapavalley.com



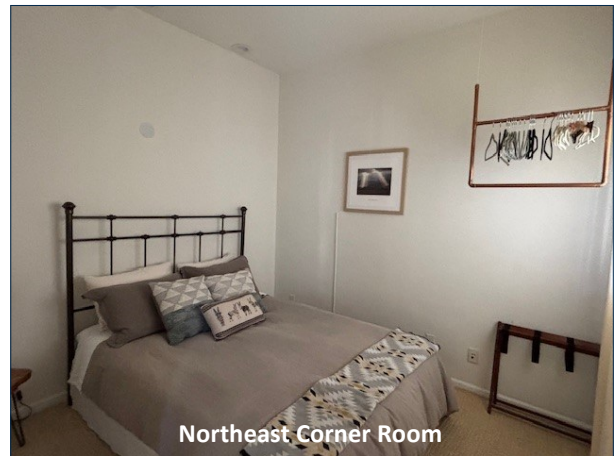
703 Jefferson Street ~ Napa, CA

For Sale or Lease ~ ±3,727 SF

DETACHED OFFICE PHOTOS



Common Room with Sink/Cabinets & Counter Top



Northeast Corner Room



Northwest Corner Room



Restroom with Shower



Michael Moffett

License #00946472

707.479.1976

mmoffett@cnapavalley.com

1775 Lincoln Ave.
Napa, CA 94558

Cathy Holmes

License #01355085

707.304.3338

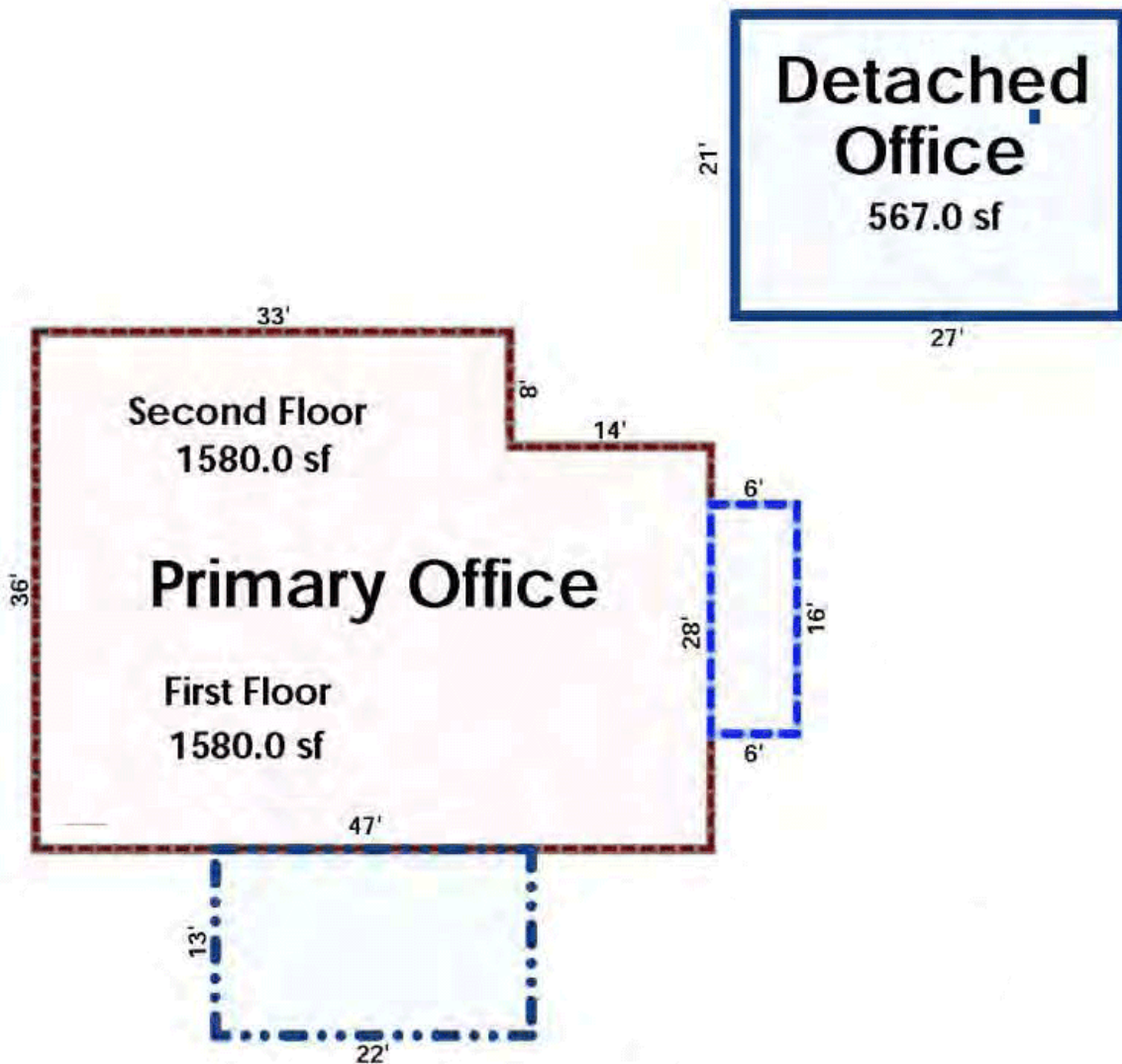
cholmes@cnapavalley.com



703 Jefferson Street ~ Napa, CA

For Sale or Lease ~ ±3,727 SF

FLOOR PLAN



Michael Moffett
License #00946472
707.479.1976
mmoffett@cnapavalley.com

1775 Lincoln Ave.
Napa, CA 94558

Cathy Holmes

License #01355085
707.304.3338
cholmes@cnapavalley.com

