

# Office/Retail For Lease

1915 N. Howard Avenue | Tampa, FL 33607



## Strategically located in the heart of **South Tampa**

This **4,500 sf** space has strong traffic exposure, walkable amenities, and versatile space ideal for retail, medical, or office use. Positioned near Columbus Drive and Cypress Street, the site benefits from over 20,000 vehicles/day and proximity to major retailers and service providers.

- Located in a dense residential pocket with growing commercial demand
- Minutes from Midtown Tampa, Westshore, and Hyde Park
- High visibility signage opportunity on N. Howard Avenue

## Get more information

**Nick Mastro**  
Senior Associate  
813.444.5334  
[nick.mastro@avisonyoung.com](mailto:nick.mastro@avisonyoung.com)

**AVISON  
YOUNG**

[avisonyoung.com](http://avisonyoung.com)

# Suite highlights

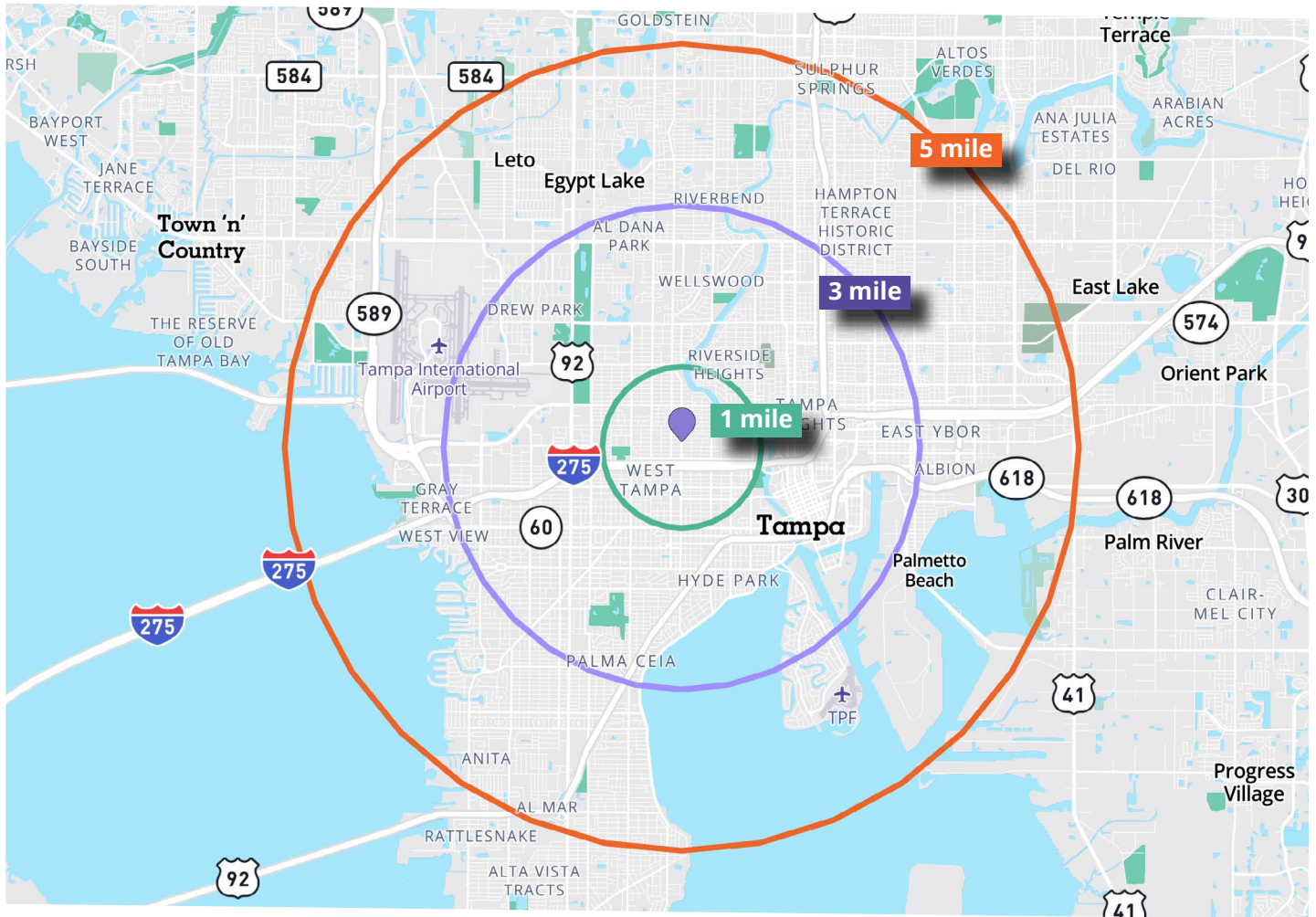
1915 N. Howard Avenue  
Tampa, FL

- 11 private offices
- 2 reception areas
- 15 on-site parking spaces, with additional street parking available
- 2 restrooms
- Two separate entrances, including one from the parking lot and one from N. Howard Avenue



# Demographics

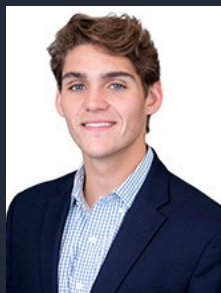
1915 N. Howard Avenue  
Tampa, FL



Radius	1 mile	3 mile	5 mile
Population	23,234	146,936	284,273
Median Home Values	\$409,291	\$561,946	\$540,922
Average Household Income	\$90,837	\$144,352	\$139,427
Total Businesses	1,634	20,514	31,868
Total Employess	9,275	166,877	251,799



**If you would like additional information,  
please get in touch.**



**Nick Mastro**

Senior Associate

813.444.5334

[nick.mastro@avisonyoung.com](mailto:nick.mastro@avisonyoung.com)

**Visit us online**

[avisonyoung.com](http://avisonyoung.com)

---

© 2025 Avison Young – Florida, LLC. All rights reserved.

E. & O.E.: The information contained herein was obtained from sources which we deem reliable and, while thought to be correct, is not guaranteed by Avison Young.

**AVISON  
YOUNG**