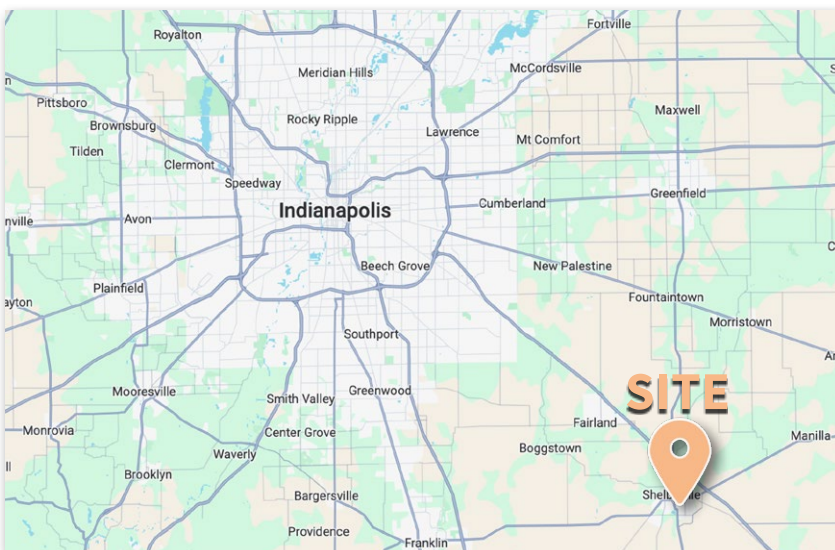






1.71 AC COMMERCIAL LOT FOR SALE

NW Corner of McKay Rd and Progress Parkway, Shelbyville, IN

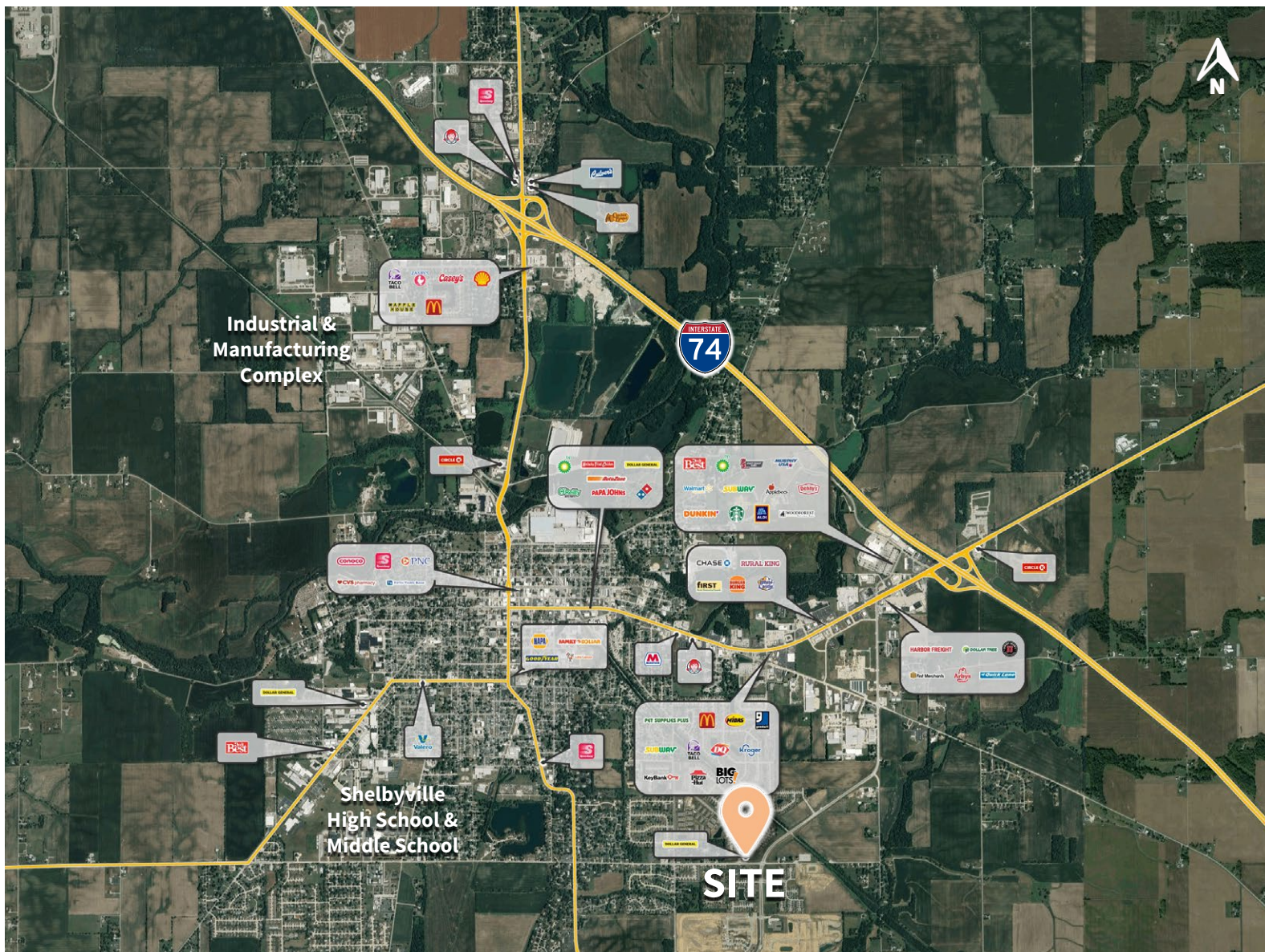


PROPERTY HIGHLIGHTS:

-  \$250,000
-  Zoned BN (Business Neighborhood)
-  Located just off of US Hwy 421 (38,201 VPD) that connects Shelbyville to Indianapolis
-  Shelbyville is the county seat of Shelby County



1.71 AC COMMERCIAL LOT FOR SALE



DEMOGRAPHICS	2 MILE	4 MILE	6 MILE
Population:	15,814	24,748	27,829
Households:	6,525	10,198	11,428
Employees:	5,405	11,651	13,185
Avg. HH Income:	\$77,980	\$80,918	\$83,507

CONTACT:

Lily Smith | 317-506-5652 | Lsmith@assemblerealestate.com