



2601-2605 W. Cermak Rd

CHICAGO, ILLINOIS

Retail Space for Lease
Southwest corner of Cermak & Rockwell

FOR MORE INFORMATION, PLEASE CONTACT

ANTHONY CAMPAGNI • 847.651.8669
ac@canvasrealestate.com

ELAN RASANSKY • 414.380.1555
elan@canvasrealestate.com

MICHAEL WALLACE • 614.537.2403
mwallace@canvasrealestate.com

DEMOGRAPHICS



338k+

Total Population
3 Miles

161k+ 44.1k+
2 Miles 1 Mile



\$91.5k+

Average HH Income
3 Miles

\$76.5k+ \$79.6k+
2 Miles 1 Mile



374k+

Daytime Population
3 Miles

181k+ 45.9k+
2 Miles 1 Mile



2601 W. Cermak



2605 W. Cermak

PILSEN

- Opportunity to re-tenant a standalone QSR building (1,500 SF)
- 5,000 SF single story retail building available with parking
- On the corner of the heavily trafficked, signalized intersection of W Cermak and S Rockwell
- Pylon signage available for both buildings

NEIGHBORING RETAILERS

AutoZone, Burger King, Chase Bank, Church's Chicken, Citibank, DaVita Dialysis, Dollar Tree, Domino's Pizza, GameStop, McDonald's, O'Reilly Auto Parts, Planet Fitness, Pete's Fresh Market, Taco Bell, T-Mobile, Wingstop.

CANVAS

SITE PLAN

SPACE AVAILABLE



5,000^{sf}

Building



1,500^{sf}

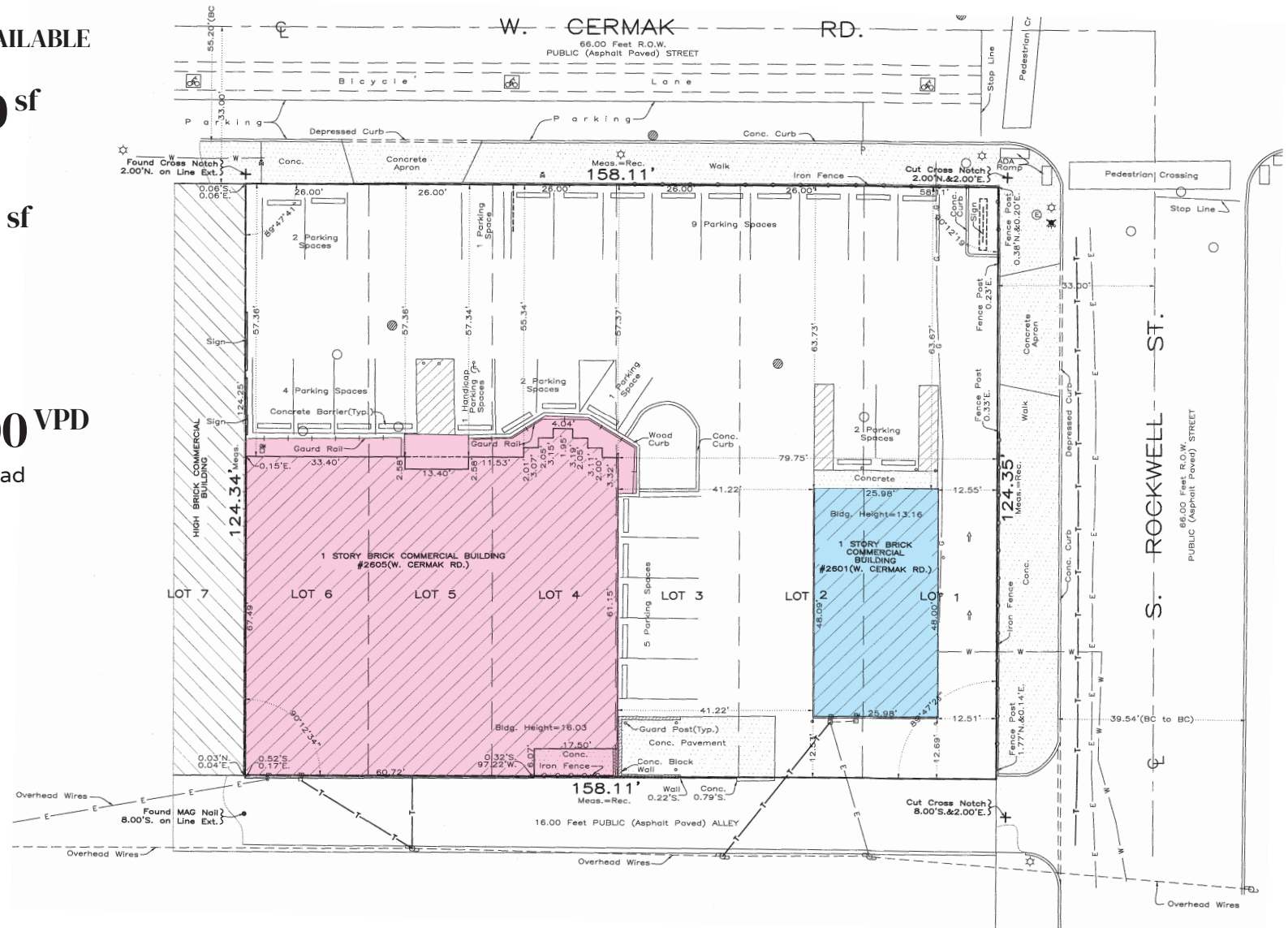
Building

TRAFFIC



13,300^{VPD}

Cermak Road



CANVAS



ANTHONY CAMPAGNI
ac@canvasrealestate.com
847.651.8669

ELAN RASANSKY
 elan@canvasrealestate.com
 414.380.1555

MICHAEL WALLACE
mwallace@canvasrealestate.com
614.537.2403



N
▲

CANVAS