

FULLY FURNISHED PLUG & PLAY FOR LEASE

# 205

## LOWELL STREET

WILMINGTON, MASSACHUSETTS



# 205 LOWELL STREET

Wilmington, Massachusetts



## BUILDING SPECIFICATIONS

**BUILDING SIZE:** 123,000 SF

**AVAILABLE SF:** Floor 1: 17,062 RSF  
Floor 2: 25,000 SF

**PROPERTY TYPE:** Office/Flex use

**YEAR BUILT:** 1960 / Renovated 2019

**ZONING:** General Industrial (GI)

**RE TAXES/CAM:** \$2.62/ SF (RE Tax)  
\$3.35/SF (CAM)

**LOADING:** One (1) Tailboard  
Grade Level access

**FLOORS:** 2

**CLEAR HEIGHT:** 14'

**PARKING:** 3.00/1,000 SF ( 360 spaces)

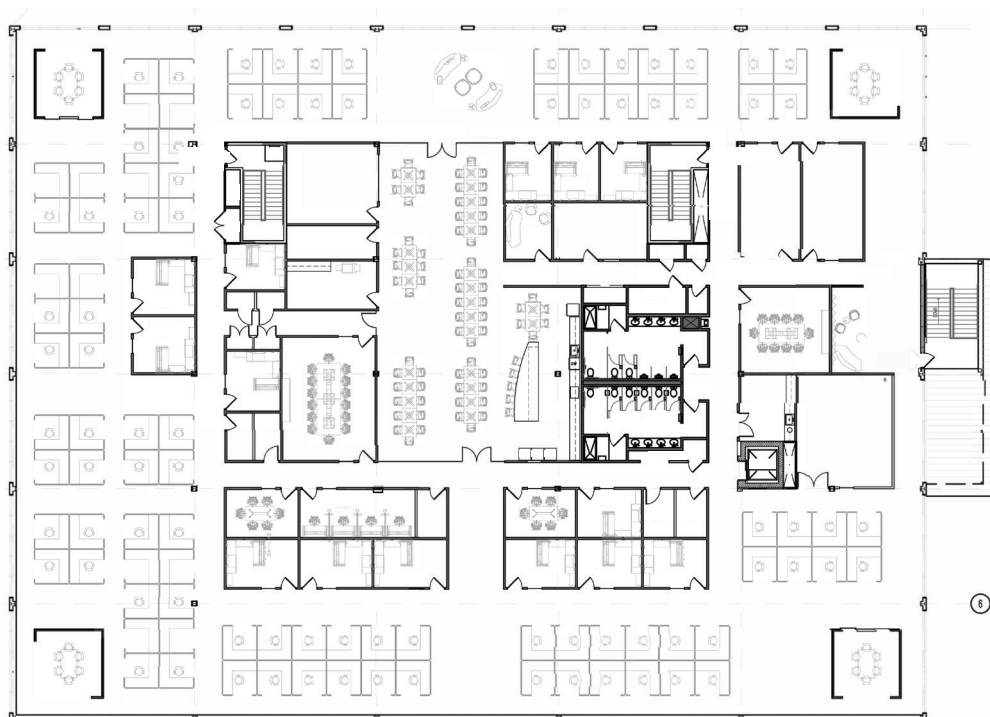
**POWER:** 1,200 Amps/ 3 Phase/ 4 Wire

**HVAC:** 117 tons

FLOOR 1 | **17,062 RSF**



FLOOR 2 | **25,000 RSF**



BOSTON

128



128



MISHAWUM CENTER



WOBURN ANDERSON



Mobil



Jake & Joes



TJ-maxx  
HomeGoods



TARGET

Residence Inn  
Marriott



CVS

Mobil

205

LOWELL STREET

129



CONTACT US TO ARRANGE A TOUR

CHRIS CURLEY

617.457.3211

ccurley@hunnemanre.com

MICHAEL ALLEN

617.457.3276

mallen@hunnemanre.com

KEN OPPENHEIM

617.457.3301

koppenheim@hunnemanre.com



303 Congress Street, Boston, MA 02210 | 617.457.3400 | [www.hunnemanre.com](http://www.hunnemanre.com)

@2024 Hunneman. All rights reserved. All information has been obtained from sources believed reliable but no warranty or representation is verified for accuracy or completeness. Caution and independent investigation of property and information should be verified. Reliance on this information is at your own risk.