

# PARK POINT @ RIT OFFICE

205 Jefferson Road  
Henrietta, NY 14623



## PROPERTY DESCRIPTION

Endcap office space up to 6,000 SF available for gross lease. Signage available fronting Jefferson Rd (Rt. 252). Park Point is a mixed-use project on the campus of Rochester Institute of Technology (RIT). Park Point offers 1st floor commercial spaces with three floors of student housing with an open courtyard for events and common space.

## LOCATION DESCRIPTION

Built in 2008, Park Point is located at the intersection of Jefferson Road (Rt. 252) and John Street and is in close proximity to over 5 Million SF of office and industrial space. Co-tenants include Loving Cup Bistro, Royal of India Restaurant, Mecate Mexican Restaurant, and Cornerstone Advisory Group. New tenants include Esan's Kitchen and Distributed Technology Group.

Park Point also is home to RIT's new 40,000 SF Administrative Offices building. Park Point is located on the corners of Jefferson Rd. and John St., next to the RIT campus. RIT has a student population of 18,600. Faculty and staff population is an additional 2,382.

## PROPERTY HIGHLIGHTS

- Gross Lease
- Signage Available
- Next to RIT Campus



**Brian Donovan**  
716.998.2943 | [brian@donovanres.com](mailto:brian@donovanres.com)  
460 East Ave, Rochester, NY 14607  
[www.donovanres.com](http://www.donovanres.com)  
NY #10491202934



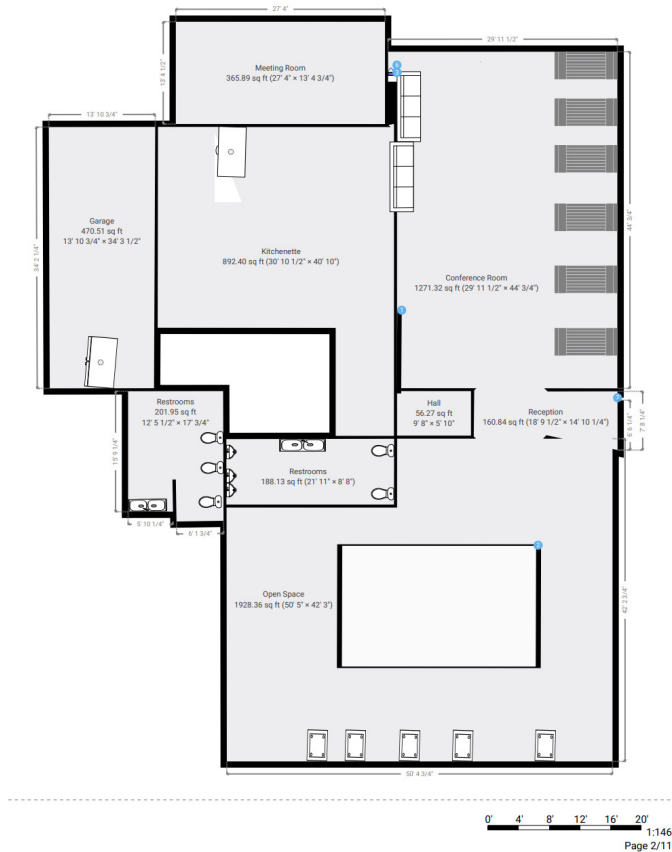
# PARK POINT @ RIT RETAIL

205 Jefferson Road  
Henrietta, NY 14623

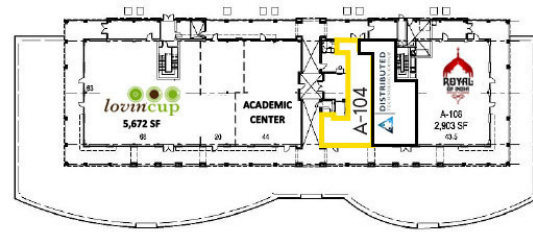


## ▼ Ground Floor

TOTAL AREA: 5942.53 sq ft • LIVING AREA: 5251.31 sq ft • ROOMS: 7

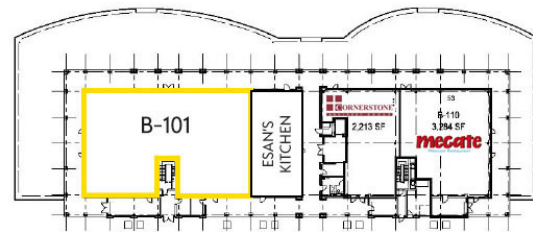


## BLDG. 300



**RIT**  
Administrative  
Offices

2 LEVEL  
40,000 SF



## BLDG. 200

## Concept Floor Plan

## Park Point Site Plan

### AVAILABLE SPACES

SUITE	TENANT	SIZE (SF)	LEASE TYPE	LEASE RATE	DESCRIPTION
B-101	Available	2,500 - 5,989 SF	Gross	\$20.00 SF/yr	Sub-divisible Space



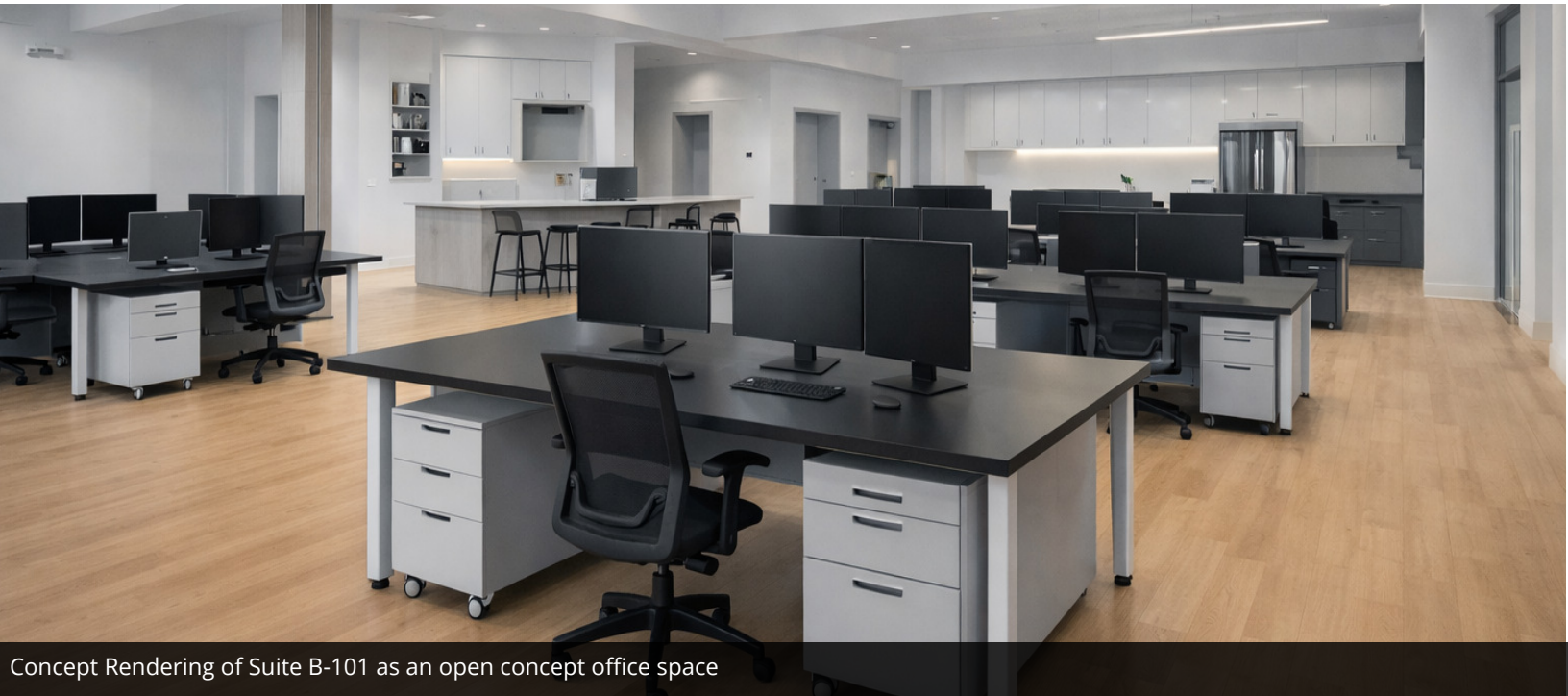
**Brian Donovan**  
716.998.2943 | brian@donovanres.com  
460 East Ave, Rochester, NY 14607  
www.donovanres.com  
NY #10491202934





# PARK POINT @ RIT RETAIL

205 Jefferson Road  
Henrietta, NY 14623



Concept Rendering of Suite B-101 as an open concept office space



Concept Rendering of Suite B-101 as an open concept office space



**Brian Donovan**  
716.998.2943 | [brian@donovanres.com](mailto:brian@donovanres.com)  
460 East Ave, Rochester, NY 14607  
[www.donovanres.com](http://www.donovanres.com)  
NY #10491202934





# PARK POINT @ RIT RETAIL

205 Jefferson Road  
Henrietta, NY 14623



**Brian Donovan**  
716.998.2943 | [brian@donovanres.com](mailto:brian@donovanres.com)  
460 East Ave, Rochester, NY 14607  
[www.donovanres.com](http://www.donovanres.com)  
NY #10491202934





# PARK POINT @ RIT RETAIL

205 Jefferson Road  
Henrietta, NY 14623



**Brian Donovan**  
716.998.2943 | [brian@donovanres.com](mailto:brian@donovanres.com)  
460 East Ave, Rochester, NY 14607  
[www.donovanres.com](http://www.donovanres.com)  
NY #10491202934

