
24 ACRES RETAIL DEVELOPMENT LAND AVAILABLE

Turner Ashby Drive, Bridgewater, VA 22812

Executive Summary



OFFERING SUMMARY

Sale Price:	\$6,000,000
Total Acres:	24 Acres
Tax Parcels:	2 Separate
Zoning:	B1 & B2
Utilities:	Public Water Available Public Sewer Available
Traffic Counts:	20,000 AADT N Main Street
Access:	Turner Ashby Drive
MLS#:	655605



PROPERTY OVERVIEW

24 acres of raw development land available. Located in fast growing and highly desirable Bridgewater, Virginia. Property lays beside popular Turner Ashby High School at signalized intersection. Heavily travelled N Main St (Route 42) provides the main corridor for traffic to and from Harrisonburg (traffic count-20,000 AADT). Surrounded by many established residential subdivisions.

For More Information:

Keith May
540.820.7008
keith.may@cottonwood.com

COTTONWOOD
COMMERCIAL
A COMMERCIAL REAL ESTATE BROKERAGE

We obtained the information above from sources we believe to be reliable. However, we have not verified its accuracy and make no guarantee, warranty or representation about it. It is submitted subject to the possibility of errors, omissions, change of price, rental or other conditions, prior sale, lease or financing, or withdrawal without notice. We include projections, opinions, assumptions or estimates for example only, and they may not represent current or future performance of the property. You and your tax and legal advisors should conduct your own investigation of the property and transaction.

24 ACRES RETAIL DEVELOPMENT LAND AVAILABLE

Turner Ashby Drive, Bridgewater, VA 22812

Aerial Photos



For More Information:

Keith May

540.820.7008

keith.may@cottonwood.com

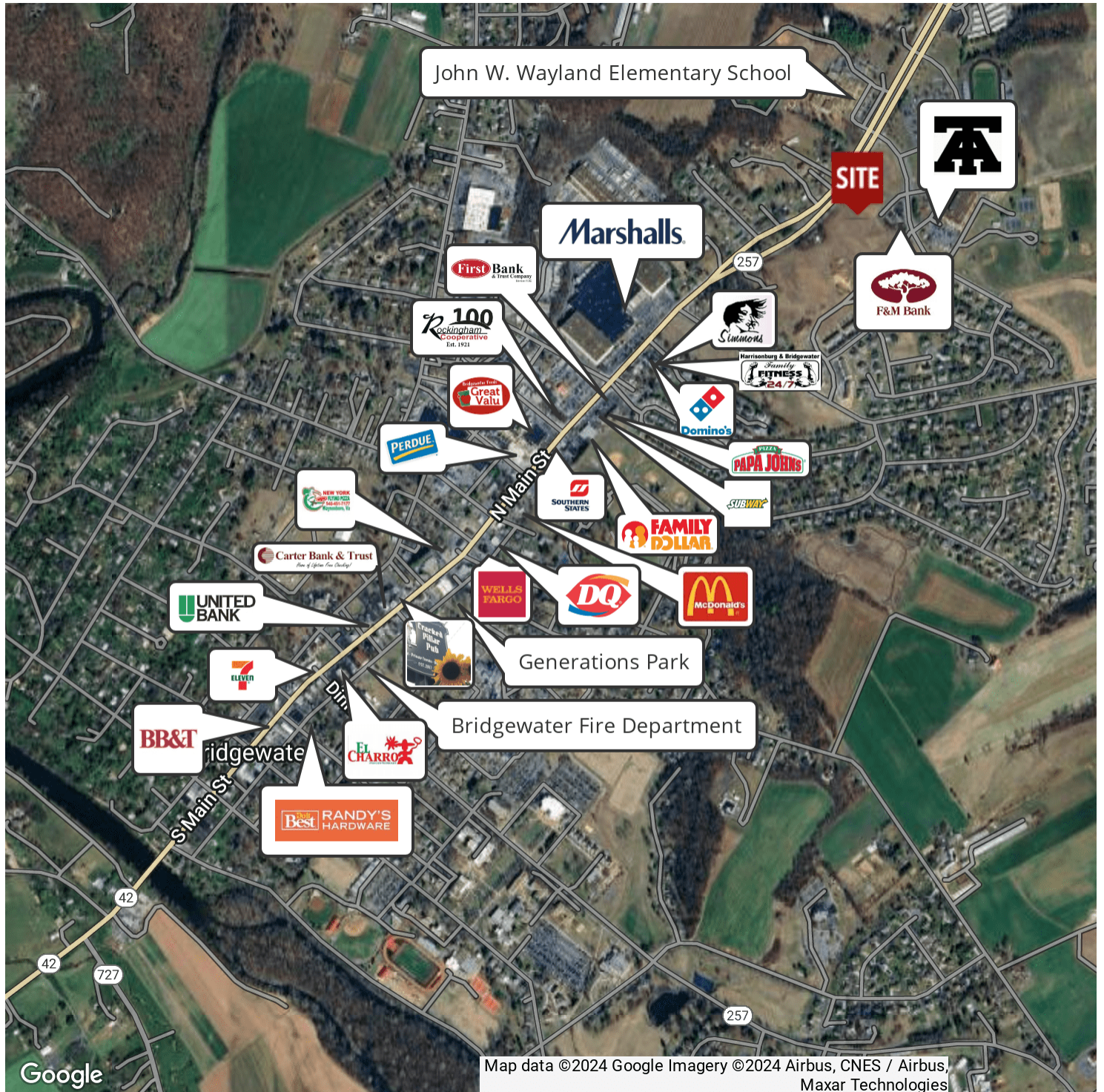
COTTONWOOD
COMMERCIAL
A COMMERCIAL REAL ESTATE BROKERAGE

We obtained the information above from sources we believe to be reliable. However, we have not verified its accuracy and make no guarantee, warranty or representation about it. It is submitted subject to the possibility of errors, omissions, change of price, rental or other conditions, prior sale, lease or financing, or withdrawal without notice. We include projections, opinions, assumptions or estimates for example only, and they may not represent current or future performance of the property. You and your tax and legal advisors should conduct your own investigation of the property and transaction.

24 ACRES RETAIL DEVELOPMENT LAND AVAILABLE

Turner Ashby Drive, Bridgewater, VA 22812

Retailer Map



For More Information:

Keith May

540.820.7008

keith.may@cottonwood.com

COTTONWOOD
COMMERCIAL
A COMMERCIAL REAL ESTATE BROKERAGE

We obtained the information above from sources we believe to be reliable. However, we have not verified its accuracy and make no guarantee, warranty or representation about it. It is submitted subject to the possibility of errors, omissions, change of price, rental or other conditions, prior sale, lease or financing, or withdrawal without notice. We include projections, opinions, assumptions or estimates for example only, and they may not represent current or future performance of the property. You and your tax and legal advisors should conduct your own investigation of the property and transaction.