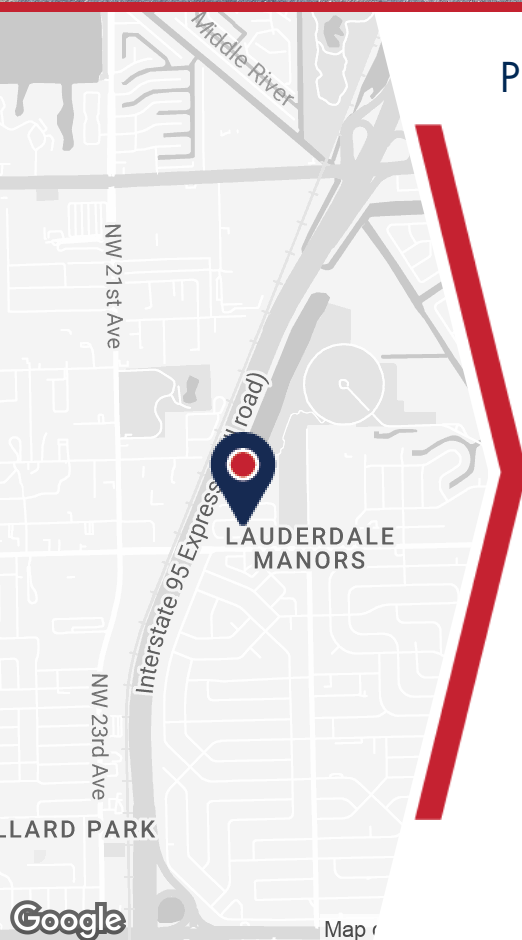


# PARKWAY COMMERCE CENTER

1919 NW 19TH ST, LAUDERHILL, FL



## PROPERTY DETAILS

- Unit 701: 6,656 SF
- Est. 2025 CAM \$6.75 PSF
- 33% office
- 2 dock high doors
- 1 grade level door
- 26' clear ceiling height
- Zoning: B-3 - Heavy Commercial/Light Industrial (City of Fort Lauderdale)
- Parking Ratio: 1.84/1,000 SF
- Strategically located just east of I-95 between Sunrise Blvd. and Oakland Park Blvd. providing easy access to all of south Florida.

## ABOUT PROPERTY



### PRICE

\$19.00 SF/yr (NNN)



### YEAR BUILT

1987



### AVAILABLE SF

6,656 SF



### PARKING

1.84/1,000 SF



### LOCATION

Fort Lauderdale

For more information:

Keith R. Graves, CCIM, SIOR

954.652.2031 | Kgraves@Bergercommercial.Com

bergercommercial.com

Jonathan Thiel

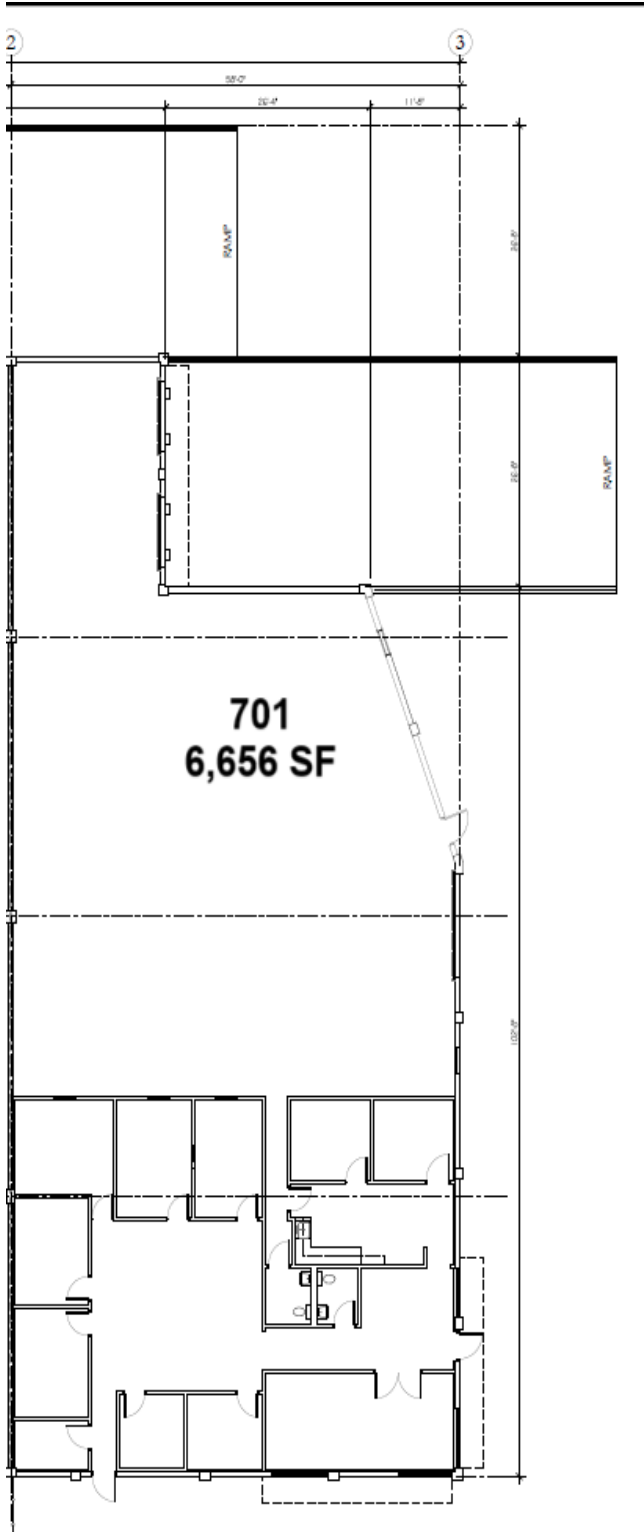
954.652.2020 | Jthiel@Bergercommercial.Com

Daniel Forman

954.652.2004 | Dforman@Bergercommercial.Com



Information furnished regarding this property is from sources deemed reliable, but no warranty or representation as to the accuracy thereof and it is submitted subject to errors, omissions, prior sale, lease or withdrawal without prior notice.



For more information:

Keith R. Graves, CCIM, SIOR

954.652.2031 | Kgraves@Bergercommercial.Com

[bergercommercial.com](http://bergercommercial.com)

Jonathan Thiel

954.652.2020 | Jthiel@Bergercommercial.Com

Daniel Forman

954.652.2004 | Dforman@Bergercommercial.Com



COMMERCIAL BROKERAGE AND PROPERTY MANAGEMENT