

# 29 BARSTOW ROAD

GREAT NECK, NEW YORK



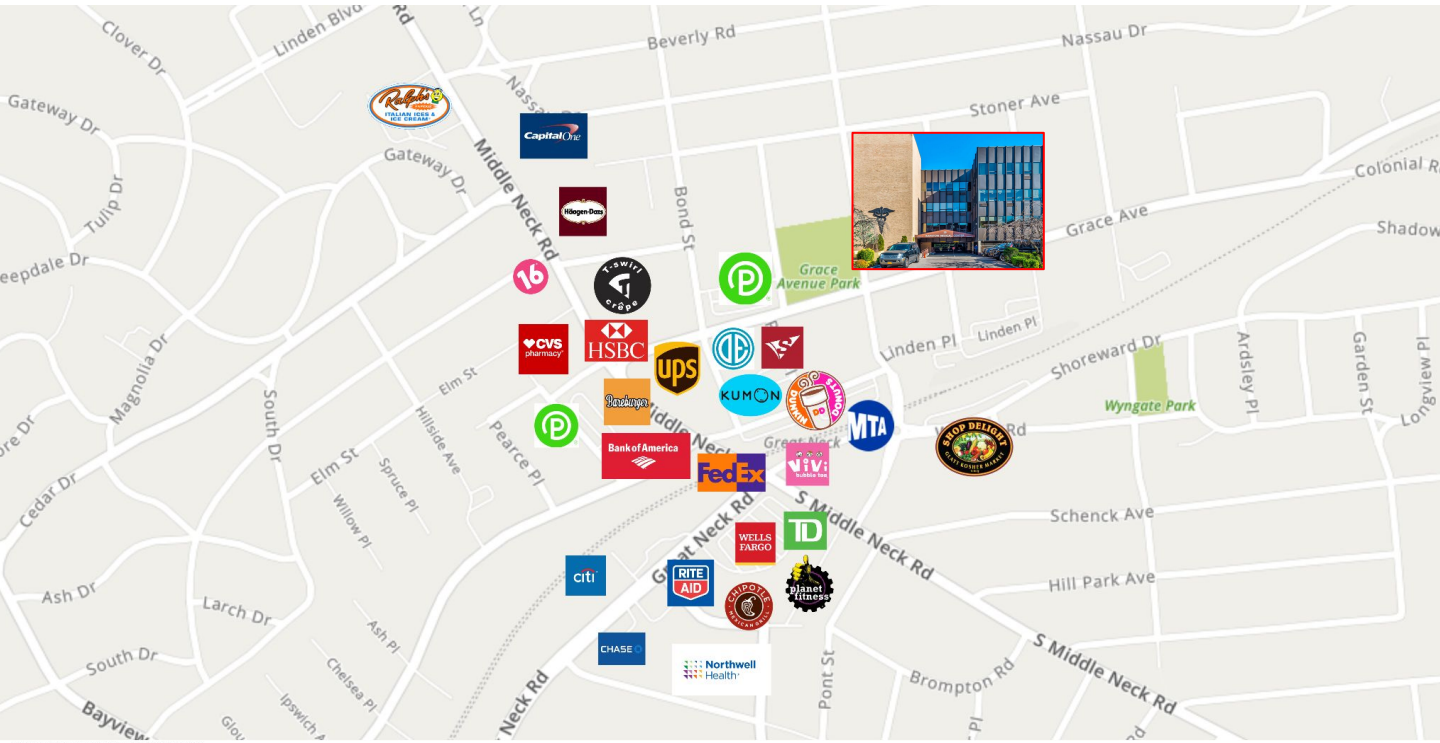
**ROZITA SOOMEKH**  
LICENSED REAL ESTATE BROKER  
Rozita.Soomekh@elliman.com  
516.205.2279

## For Lease Medical/ Professional Office

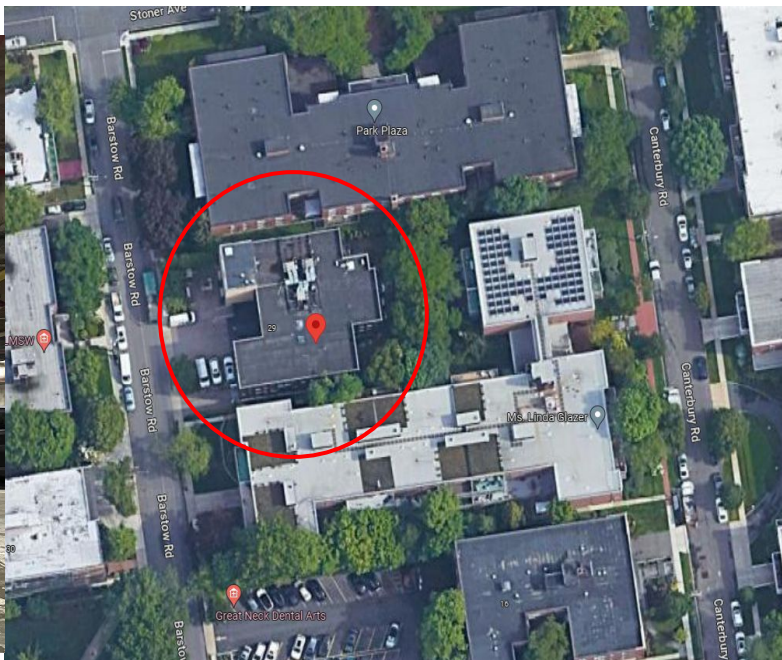
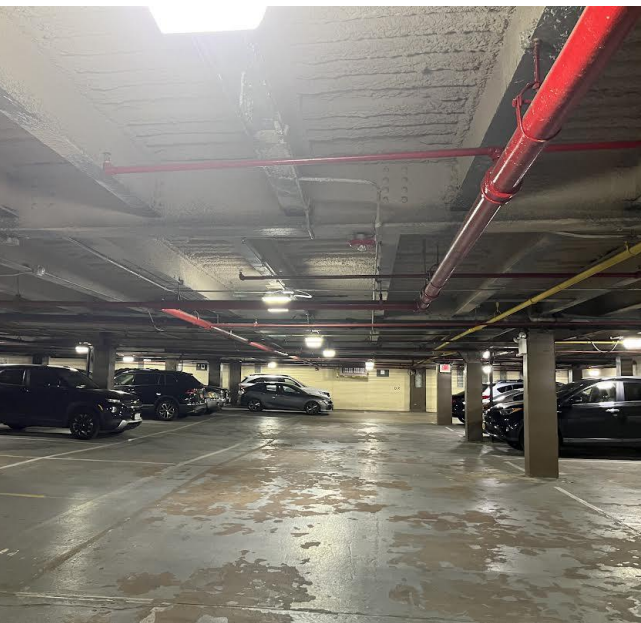
Private suites available in a three story, ideal commercial property. It has recently undergone remodeling and renovation, such as New Boiler, Roof, hallways with New paint, Carpet and LED Lighting. Ensuring a comfortable and efficient space for tenants. For additional tenants' convenience, it also features private bathrooms for all suite, parking spot with valet parking and elevator.

Situated in the heart of Great Neck Plaza, it is highly desirable due to its close proximity to town shopping, banks, post offices, restaurants, parks and LIRR (20 min. Ride to both Grand Central Station and Penn Station) making it an popular spot for any kind of business.





OTHER NOTABLE BUSINESSES IN THE AREA



550 SMITHTOWN BYPASS STE. 117 SMITHTOWN, NY 11787 631.858.2405 © 2023 DOUGLAS ELLIMAN COMMERCIAL OF LI, LLC. ALL MATERIAL PRESENTED HEREIN IS INTENDED FOR INFORMATION PURPOSES ONLY. WHILE THIS INFORMATION IS BELIEVED TO BE CORRECT, IT IS REPRESENTED SUBJECT TO ERRORS, OMISSIONS, CHANGES OR WITHDRAWAL WITHOUT NOTICE. ALL PROPERTY INFORMATION, INCLUDING, BUT NOT LIMITED TO SQUARE FOOTAGE, ROOM COUNT, ZONING IN THE LISTING SHOULD BE VERIFIED BY YOUR OWN ATTORNEY, ARCHITECT OR ZONING EXPERT. IF YOUR PROPERTY IS CURRENTLY LISTED WITH ANOTHER REAL ESTATE BROKER, PLEASE DISREGARD THIS OFFER. IT IS NOT OUR INTENTION TO SOLICIT THE OFFERINGS OF OTHER REAL ESTATE BROKERS. WE COOPERATE WITH THEM FULLY. EQUAL HOUSING OPPORTUNITY.

# AVAILABLE UNITS



**\*\*All Utilities by Separate Meter, Paid by Tenant**

Suite 200-B **\$2,000/Month**

**APPROX. 850 SF**

Suite 304 **\$9,000/Month**

**APPROX. 4,150 SF**

Suite 305 **\$7,500/Month**

**APPROX. 3,000 SF**

Suite 306 **\$2,800/Month**

**APPROX. 1,200 SF**



 **THE**  
**ROZITA**  
**SOOMEKH**  
**TEAM** at Douglas Elliman  
Real Estate



Suite 306 = **\$2,800 /Month**  
**APPROX. 1,200 SF**

**4 Office - 2 Exam Rooms  
Lab - Reception Area  
Bathroom**







# GREAT NECK

NEW YORK

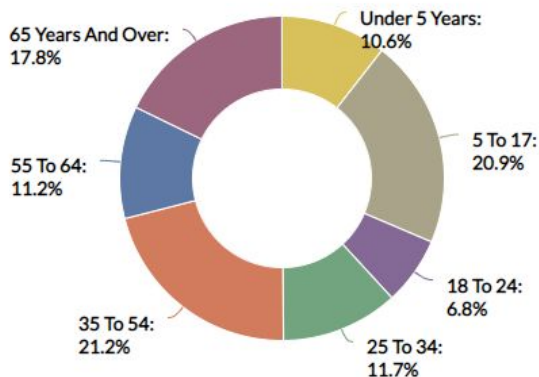


Great Neck is a region on Long Island, New York, that covers a peninsula on the North Shore and includes 9 villages, such as the villages of Great Neck, Great Neck Estates, Great Neck Plaza, Kings Point, and Russell Gardens, and a number of unincorporated areas, as well as an area south of the peninsula near Lake Success and the border territory of Queens.

TOTAL POPULATION

±11,000

## Age Demographic



## MEDIAN HOUSEHOLD INCOME



SCAN TO VIEW  
ALL OUR LISTINGS

